



Company Update

April 2021

ersonal use only



Corporate

Share Capital (ASX: JRL)	51.3M
Share Price (12/04/2021)	A\$2.80
Unlisted Options (40c, 50c, \$1.00, \$3.50)	8.5M
Market Cap (12/04/2021)	A\$143.7M
Cash/Liquids (15/03/2021)	A\$12.0M

Major Shareholders

L G Dudfield	26.8%
Kale Capital Corporation Pty Ltd	5.3%
Kevrex Pty Ltd	3.9%
National Nominees	3.7%
Pillage Investments Pty Ltd	3.3%

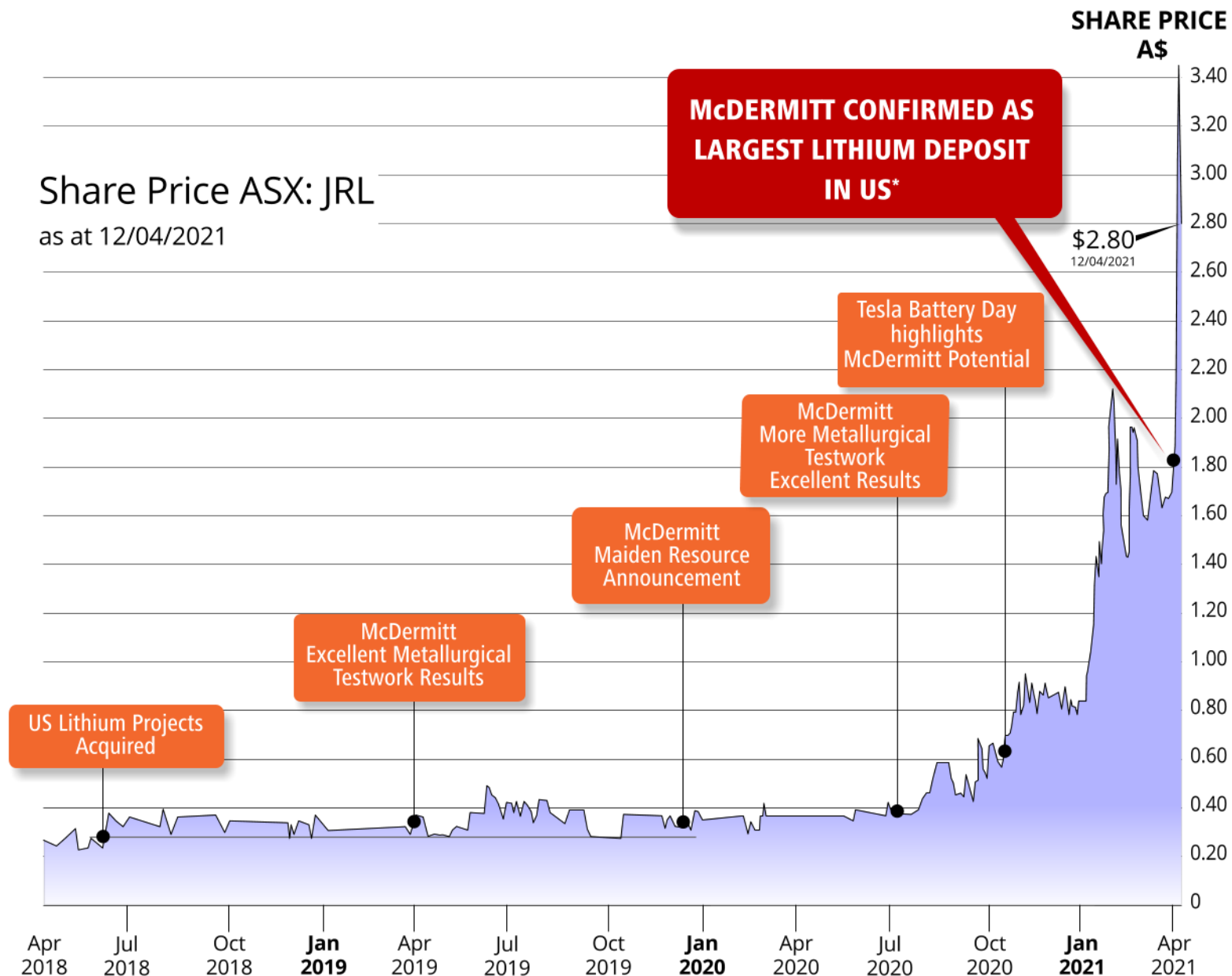
Board/Management

Chairman	Justin Mannolini
Executive Director	Lindsay Dudfield
Executive Director & Company Secretary	Trish Farr
Chief Executive Officer	Karen Wellman

A public company with the primary objective of creating wealth for shareholders through the discovery of world-class mineral deposits

Share Price ASX: JRL

as at 12/04/2021



Refer *08/04/2021, "Upgraded Mineral Resource confirms McDermitt as the largest lithium deposit in the USA"

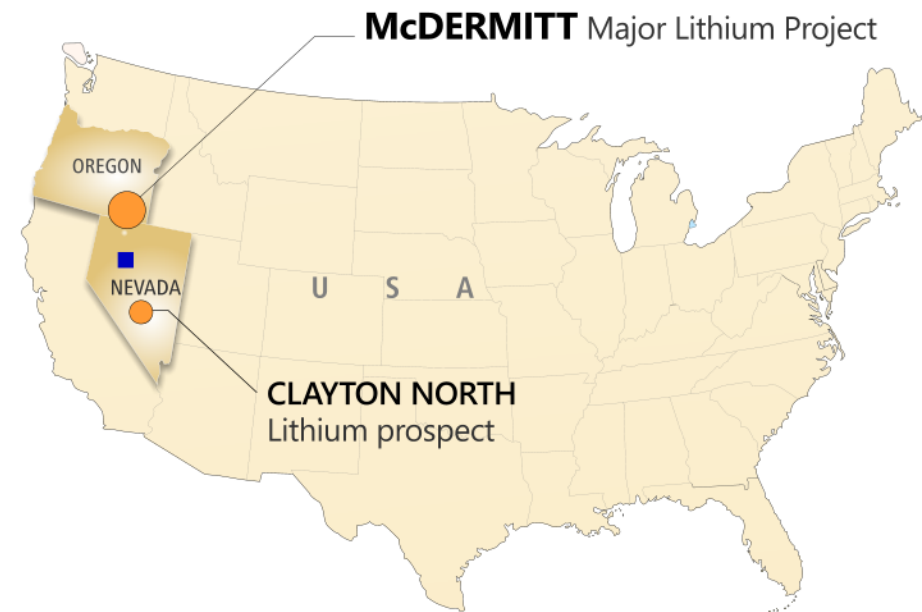
Strategic Project Exploration Australia and US



Strong, diverse portfolio of 100% JRL owned projects

Potential for Gold, Nickel, Lithium, Magnesite and Iron Ore

Strategic investments in Uranium, Nickel, Gold & Copper



Substantial McDermitt Lithium project

Indicated + Inferred mineral resource with huge upside

Strong Government support for large Lithium deposits

Tesla's localisation of cathode production in US highlights strategic value of McDermitt

Lithium Supply / Demand

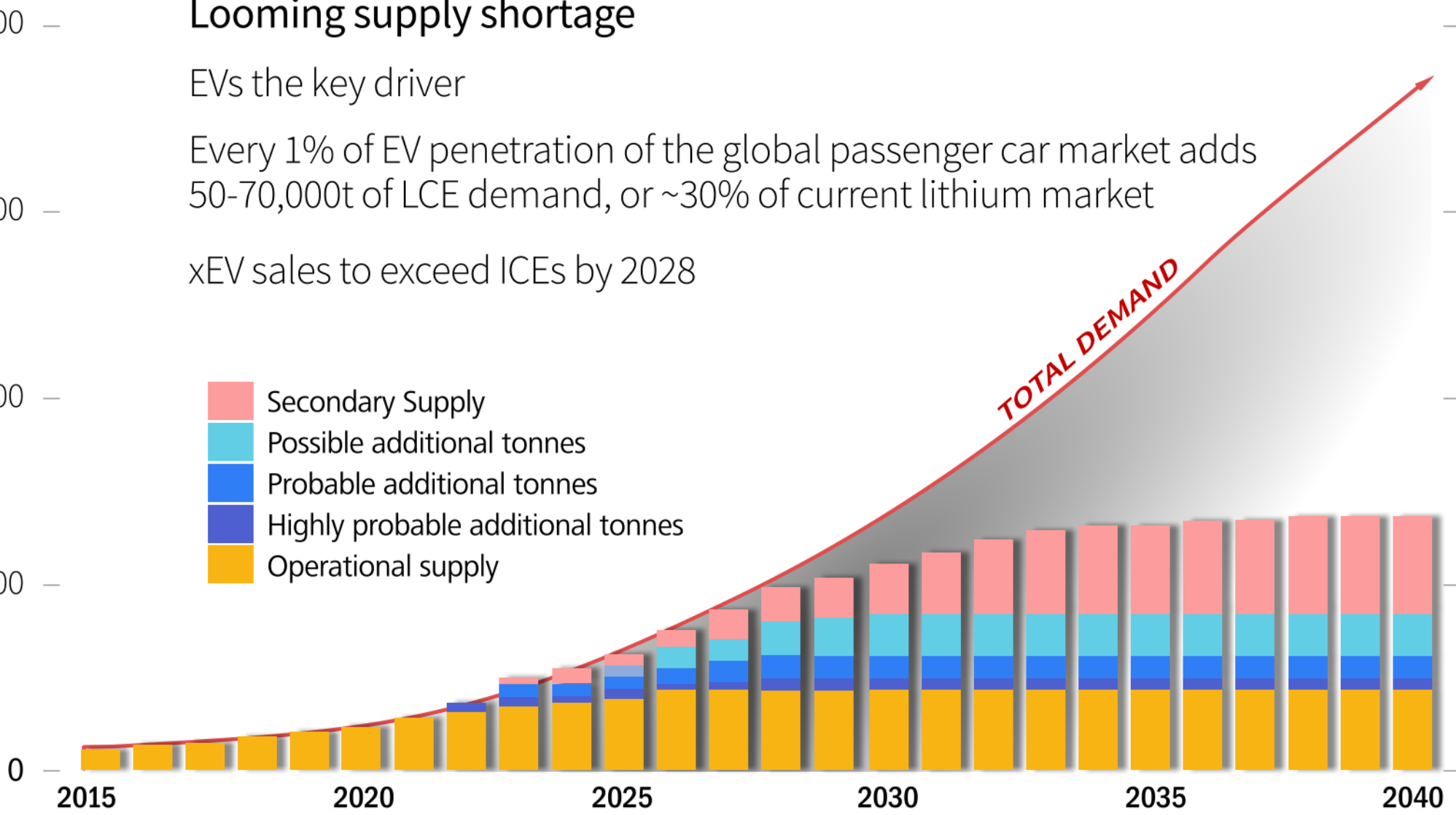
Looming supply shortage

EVs the key driver

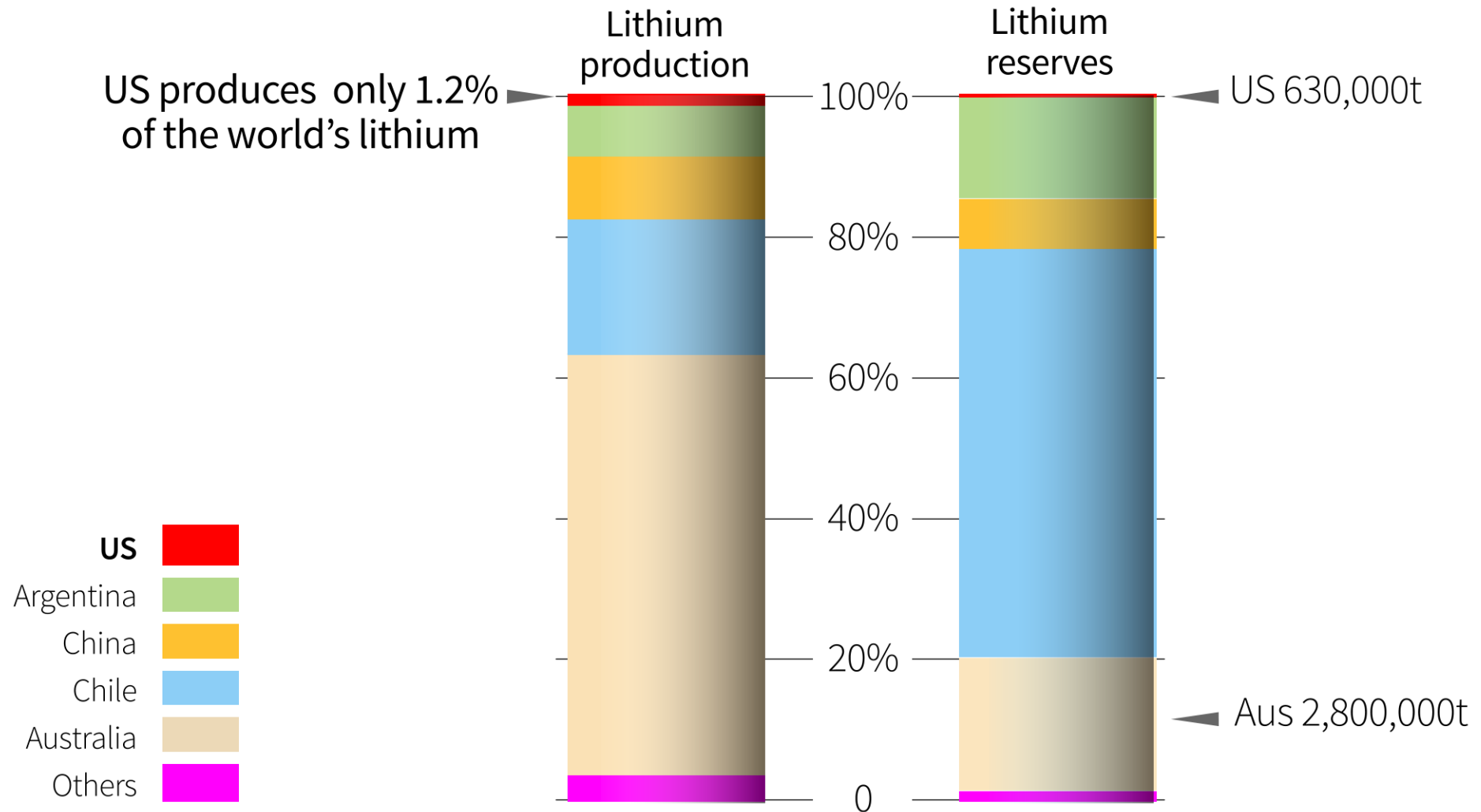
Every 1% of EV penetration of the global passenger car market adds 50-70,000t of LCE demand, or ~30% of current lithium market

xEV sales to exceed ICEs by 2028

Lithium Carbonate Equivalent (Tonnes)

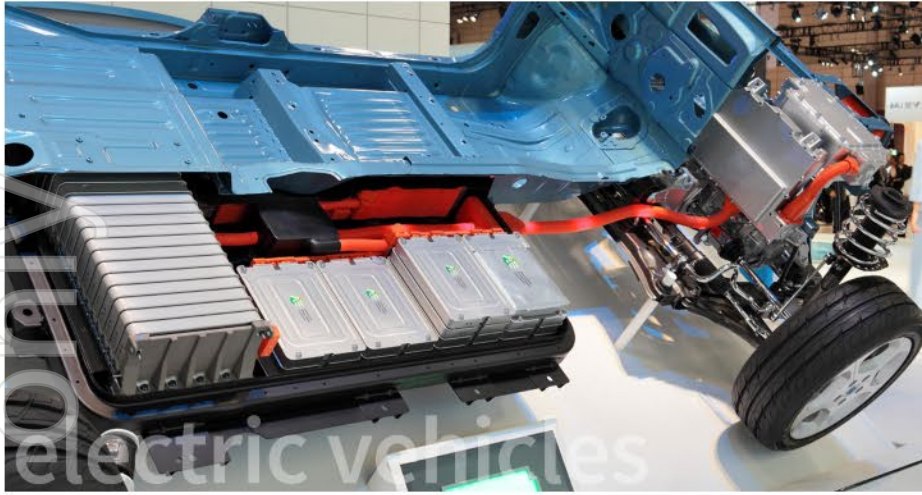


US reliance on imported lithium



Source: Bloomberg

Biden's election very positive for US Lithium



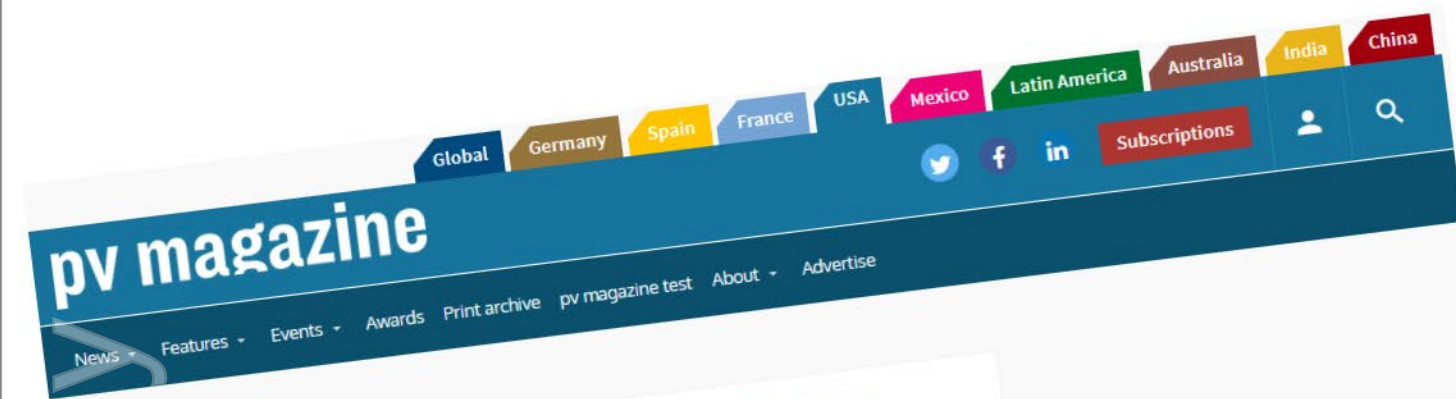
Focussed attention on reducing carbon emissions via renewables - EVs and energy storage the key drivers

Lithium demand expected to increase significantly to meet emissions targets with uptake of Li-ion batteries for EVs and energy storage

Biden has pledged **Zero Emissions** by 2050

\$US2 Trillion spend on **EV infrastructure** and other carbon reduction projects

Bi-partisan support for development of **US critical mineral projects** including lithium



Granholt focuses on jobs and clean tech in DOE confirmation hearing

Former Michigan Gov. Jennifer Granholm told a Senate confirmation hearing that she wants to use her role as Energy Secretary to bring cleantech jobs to the US, achieve net-zero carbon emissions by 2050, and invest in tech through DOE loan programs.

JANUARY 28, 2021 TIM SYLVIA

LEGAL MARKETS & POLICY POLICY UNITED STATES



Jennifer Granholm

“We can buy electric car batteries from Asia, or we can make them in America.”



Jindalee US Lithium Projects and Major Battery Production (as at 12 Apr 2021)

McDERMITT Oregon

Jindalee Resources

Indicated + Inferred Mineral Resource:
1.43 Bt @ 1,320 ppm Lithium (1,000ppm Li cut-off)

The largest Lithium deposit in the US
54.6km² (21miles²) claims area

CLAYTON NORTH Nevada

Jindalee Resources

- Jindalee Resources Lithium Project/Resource
- Planned Battery Output

GIGAFACTORY Nevada
Tesla Inc 60GWh

ENDICOTT New York
Imperium 3 15GWh

LORDSTOWN Ohio
LG Chem/GM 10GWh

GHAFARI Michigan
LG Chem 15GWh

COMMERCE Georgia
SK Innovation 10GWh

SMYRNA Tennessee
Envision AESC 5GWh

TERAFACTORY Texas, Austin
Tesla Inc 150GWh

■ **FARASIS** Location to be confirmed
10GWh
(Location to be confirmed)

US is gearing up for New Energy Revolution



Terafactory Texas



Ultium Lordstown



Moss Landing Energy Storage California

US currently **imports almost all lithium** and is vulnerable to supply chain disruption

Reaction?

US is planning for the **New Energy Revolution** with large operating/expansion & construction of new battery factories

Tesla is moving to source and refine its lithium from **local deposits**; other auto makers will follow

Large sediment hosted deposits like **McDermitt (JRL)** have the potential to make the US **self-sufficient** in lithium

Jindalee US Lithium

Two Lithium projects in the US

McDermitt - Oregon. Jindalee's US flagship project
Priority resource development

Clayton North - Nevada. Pre-exploration planning

McDermitt:

Indicated + Inferred Mineral Resource: **1.43 Bt @ 1,320 ppm Lithium**
(1,000ppm Li cut-off)

The largest Lithium deposit in the US – 54.6km² (21miles²) claims area

Potential for long life - low cost mining operation. Value proposition

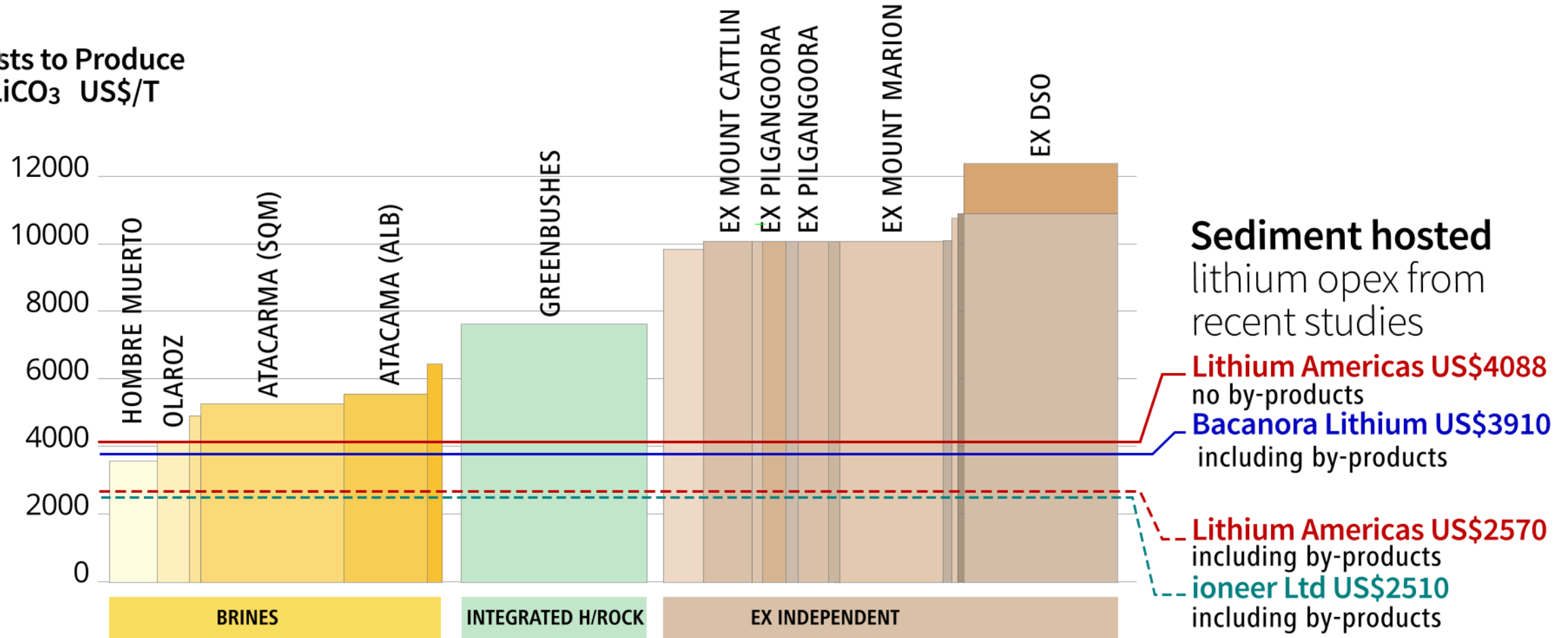
Development of McDermitt resource could make US self sufficient in Lithium



Why Sediment Hosted Lithium Deposits

Long life, low cost sources of battery chemicals

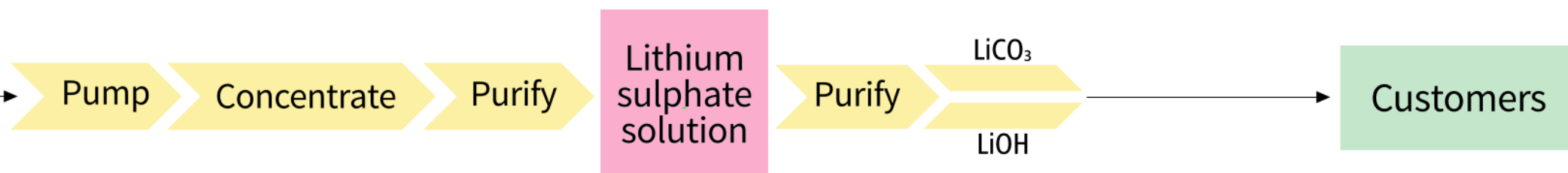
Costs to Produce
 LiCO_3 US\$/T



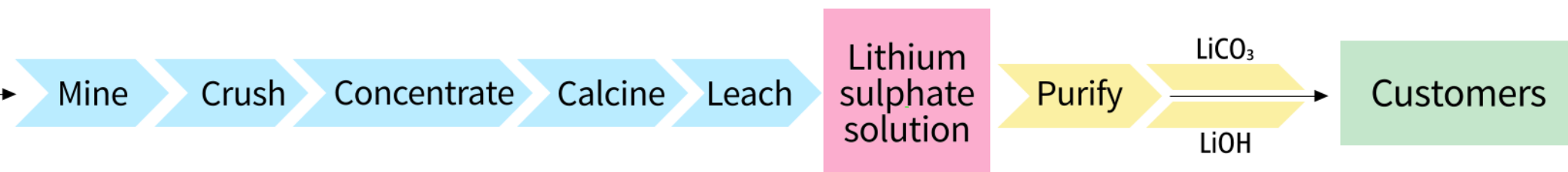
Sources: Canaccord 30/10/2018 and company reports

Sedimentary Deposits short cut to lower costs

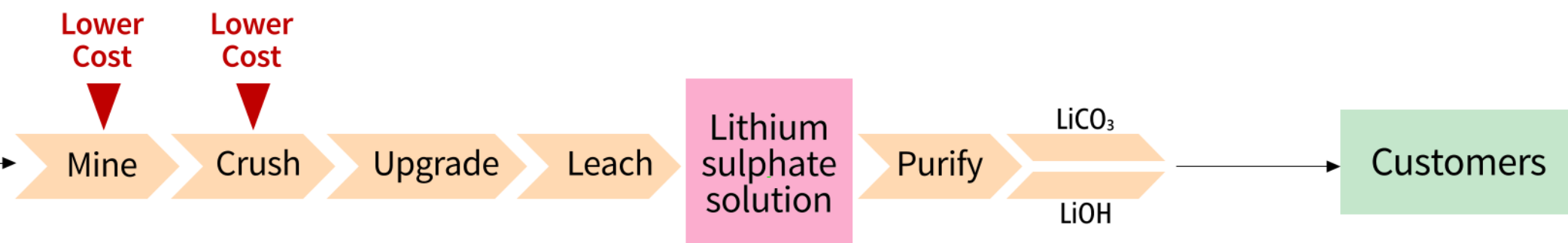
Lithium recovery
from **brines**



Lithium recovery
from **pegmatites**



Lithium recovery
from **sediments**
(McDermitt)



McDermitt Lithium bearing sediments at surface

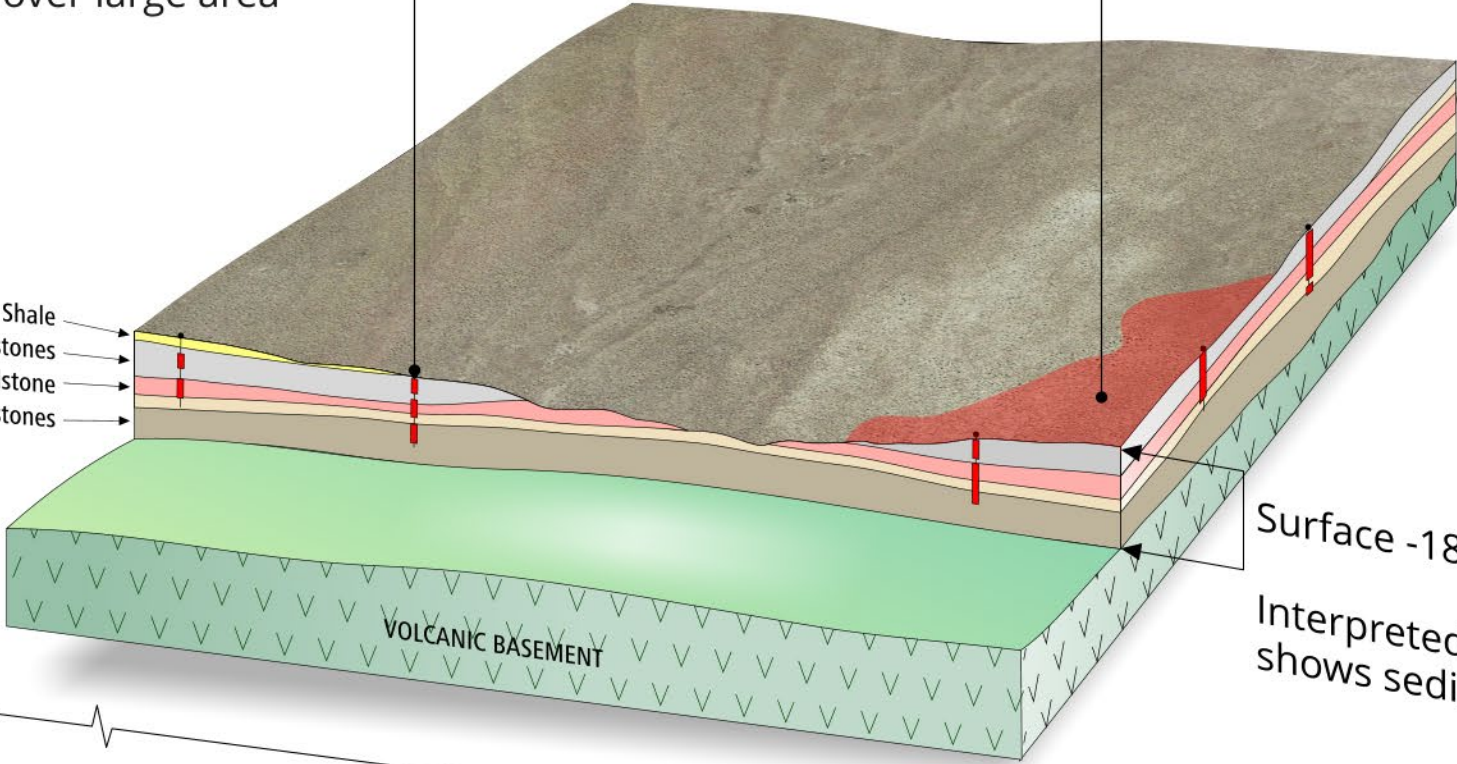


McDermitt Simplified schematic section

Lithium intercepts in all 29 drillholes
Broad widths over large area

Lithium mineralisation at surface
Near surface high grade zones

Shale
Sandstones / Siltstones
Mudstone
Mudstone / Sandstones



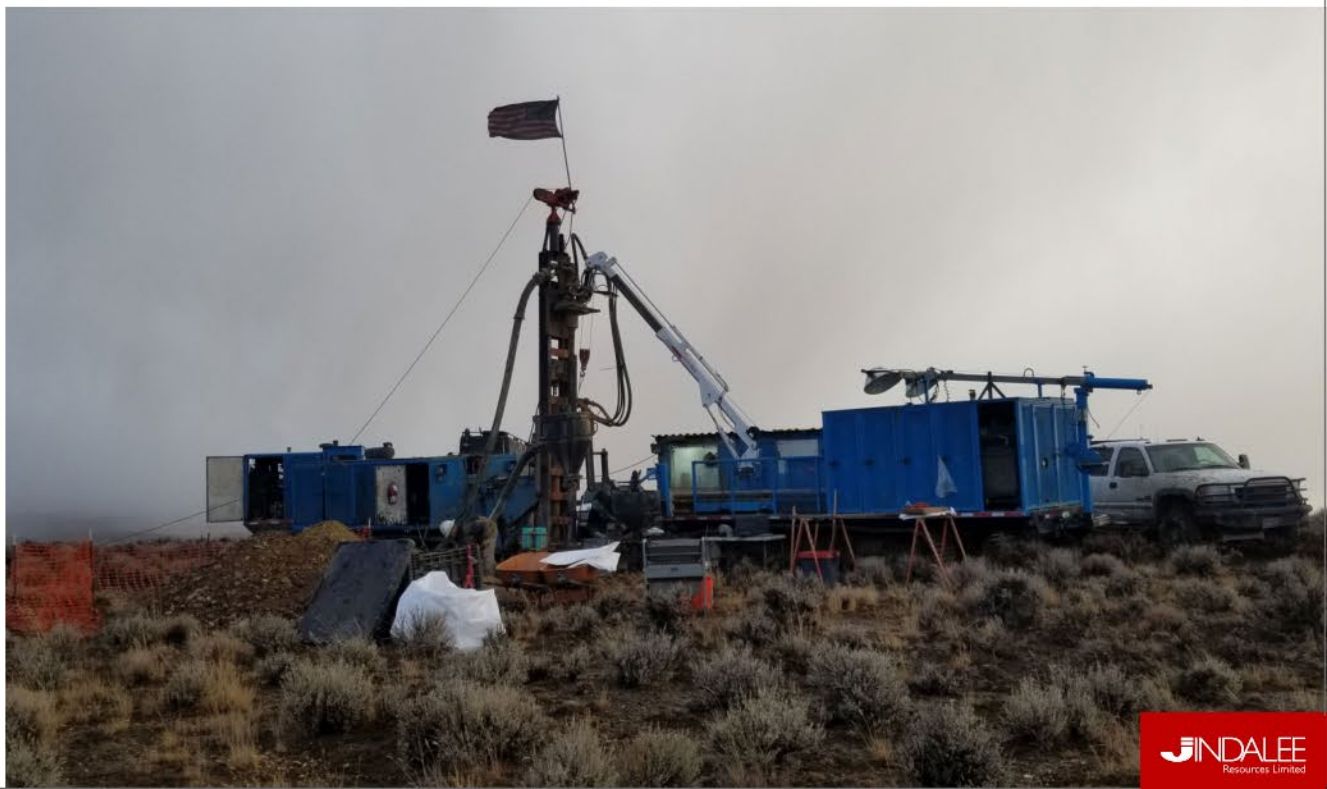
Surface -186m drill tested

Interpreted stratigraphy
shows sediments >180m

1.2 to >3km

not to scale

McDermitt 2020 drilling



McDermitt Low Cost Mining

TYPICAL DRILL CORES

Flat lying sediments confirmed in all core holes

Soft, low strip ratio

Amenable to low cost mining and crushing

Excellent metallurgical results

MDD001 14.0m - 16.7m

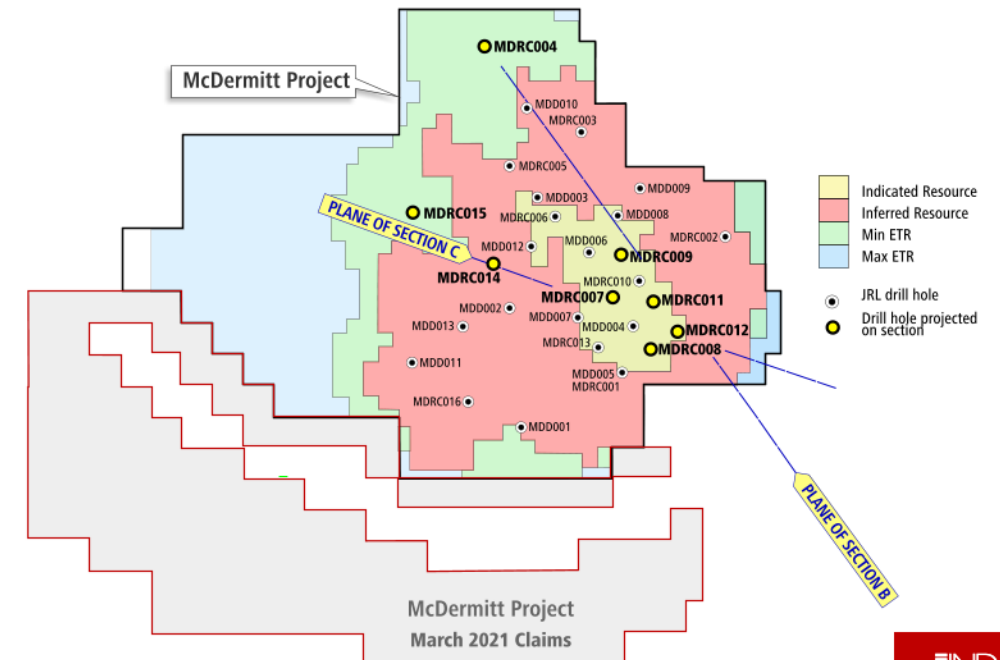
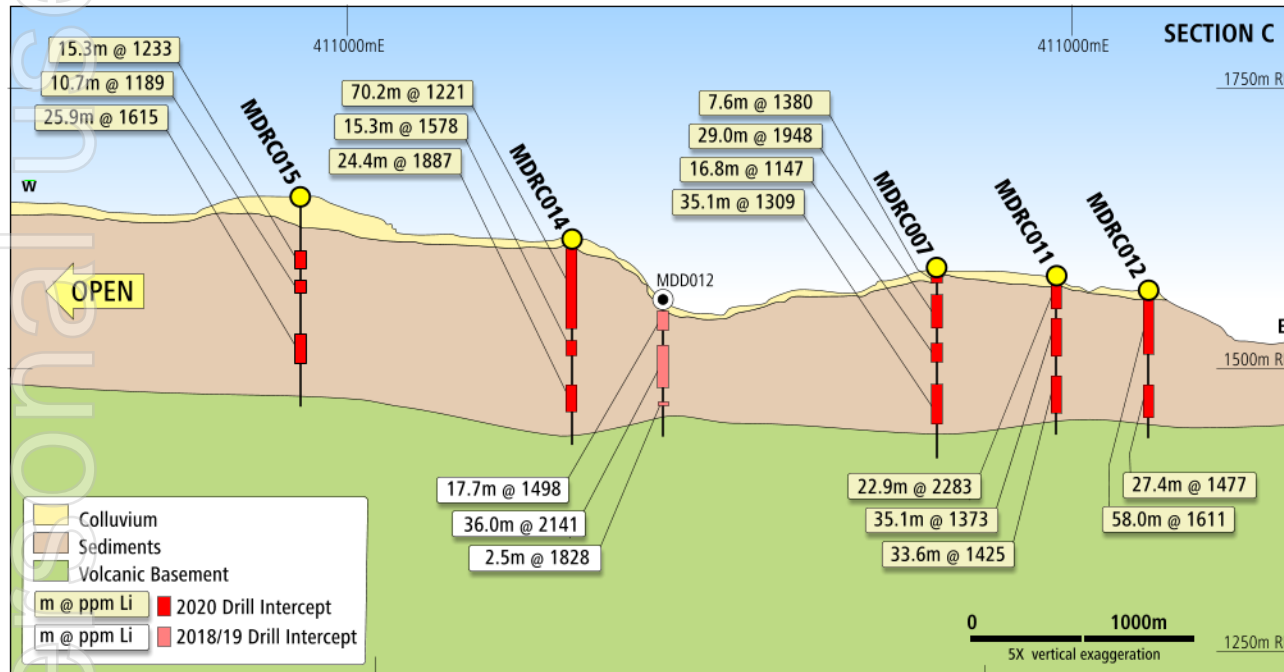
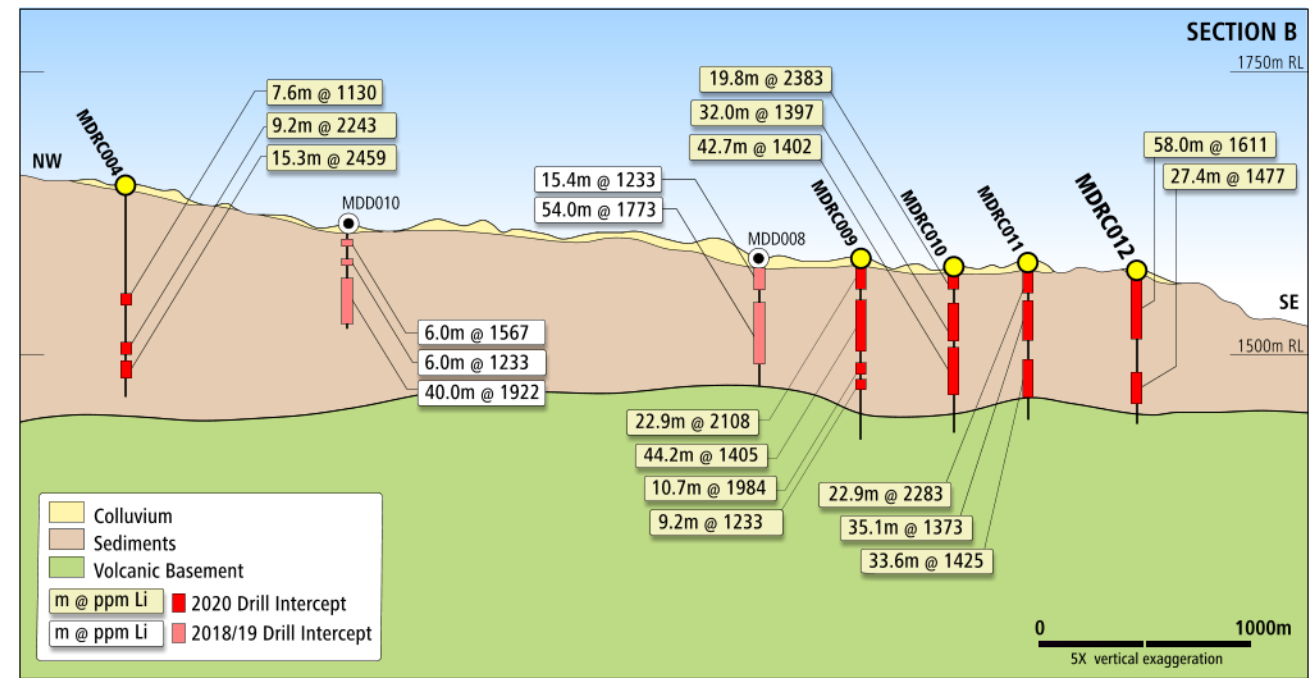


MDD006 36.2m - 39.1m



McDermitt 2020 Drilling

Consistent Lithium mineralised intercepts across large area



McDermitt Upgraded Resources and ETR

Indicated + Inferred Mineral Resource

1.43 Bt @ 1320 ppm Lithium

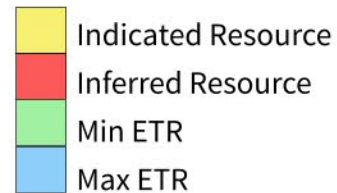
(1000 ppm Li cut-off)

Exploration Target Range (ETR)

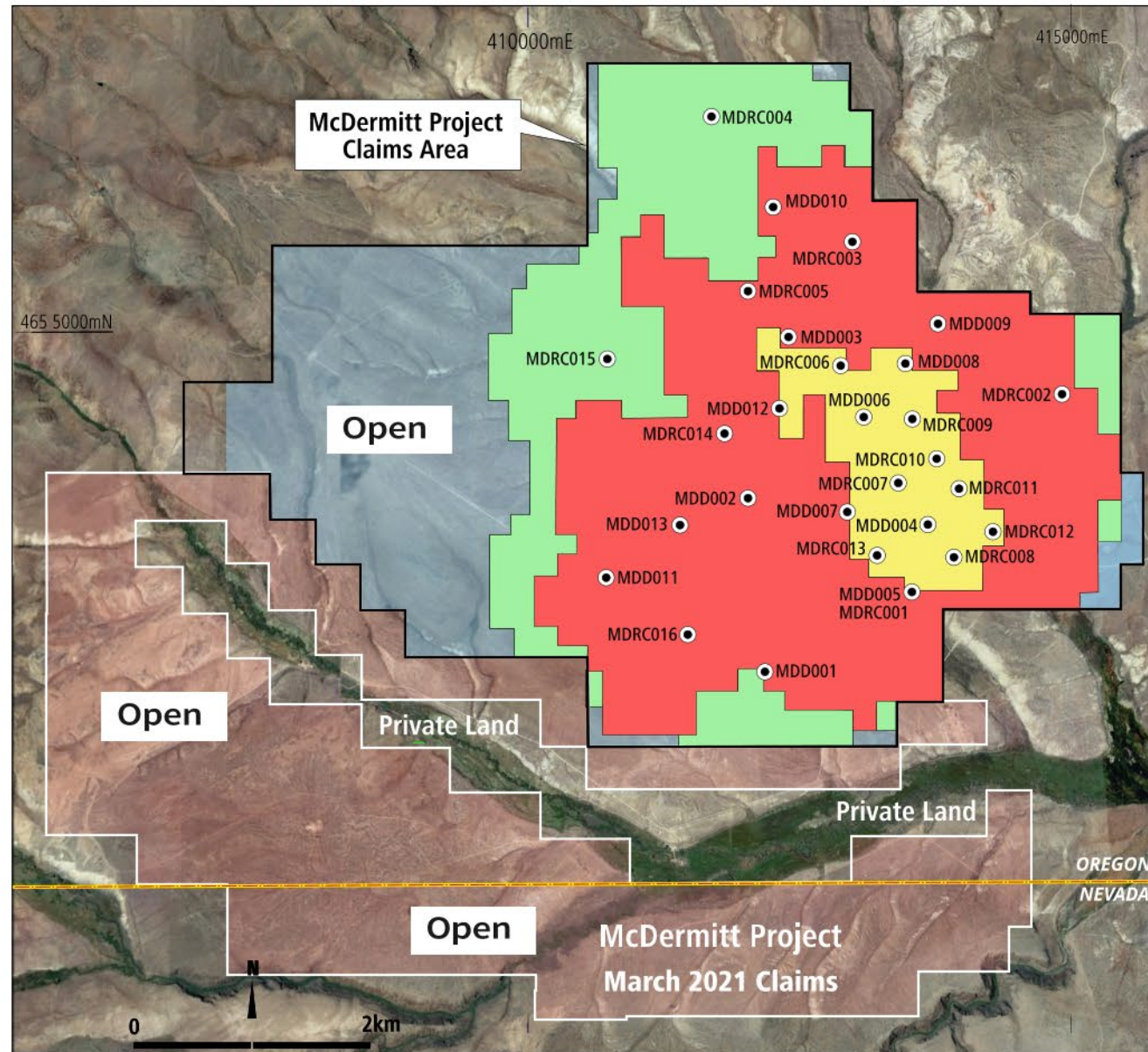
1.3 - 2.3 Bt @ 1100 -1500 ppm Lithium

(1000 ppm Li cut-off)

Note that the potential quantity and grade of the Exploration Target is conceptual in nature, there has been insufficient exploration to estimate a Mineral Resource and it is uncertain if further exploration will result in the estimation of a Mineral Resource.



● JRL drill hole



McDermitt Project



Refer ASX release, 08/04/2021, "Upgraded Mineral Resource confirms McDermitt as the largest Lithium deposit in the USA"

McDermitt Indicated + Inferred Resource

Upgraded Mineral Resource confirms McDermitt as the largest Lithium deposit in the USA

Cut-off Grade (ppm Li)	Indicated Resource			Inferred Resource			Indicated & Inferred Resource		
	Tonnage (Mt)	Li Grade (ppm)	LCE (Mt)	Tonnage (Mt)	Li Grade (ppm)	LCE (Mt)	Tonnage (Mt)	Li Grade (ppm)	LCE (Mt)
500	283	1,340	2.0	2,020	1,130	12.1	2,300	1,150	14.1
1,000	233	1,430	1.8	1,200	1,300	8.3	1,430	1,320	10.1
1,500	73	1,910	0.7	240	1,750	2.2	313	1,790	3.0
1,750	44	2,110	0.5	85	2,000	0.9	129	2,040	1.4
2,000	23	2,310	0.3	34	2,200	0.4	57	2,240	0.7

McDermitt Exploration Target Range (ETR)

Large ETR highlights potential for significant increases to the Resource

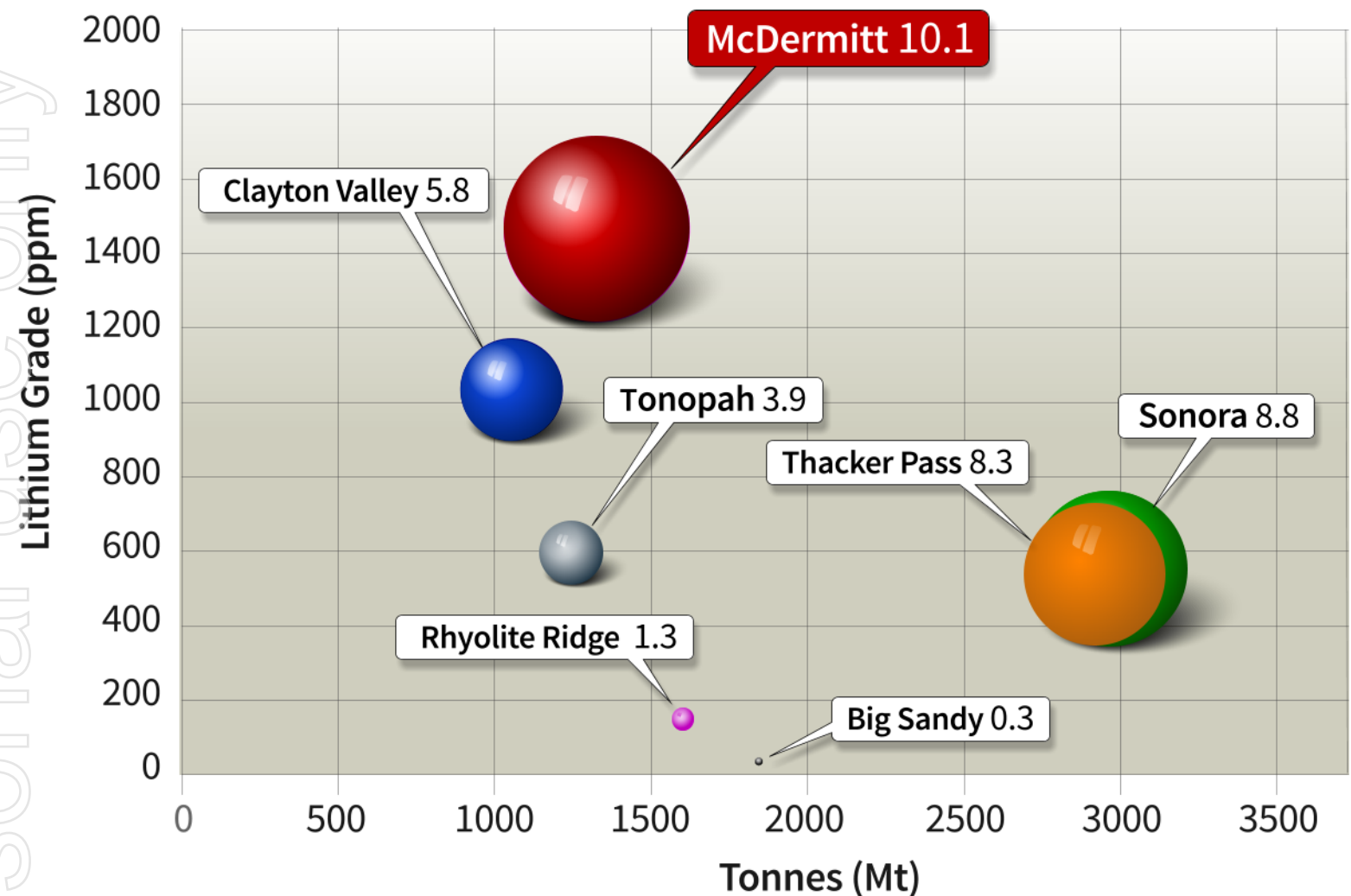
Cut-off Grade (ppm Li)	Exploration Target Range			
	Lower Limit (Mt)	Upper Limit (Mt)	Lower Grade (ppm Li)	Upper Grade (ppm Li)
500	2,300	4,500	800	1,200
1,000	1,300	2,300	1,100	1,500
1,500	270	390	1,500	1,900
1,750	100	140	1,700	2,100
2,000	30	40	1,900	2,300

Note that the potential quantity and grade of the Exploration Target is conceptual in nature, there has been insufficient exploration to estimate a Mineral Resource and it is uncertain if further exploration will result in the estimation of a Mineral Resource.

Refer ASX release, 08/04/2021, "Upgraded Mineral Resource confirms McDermitt as the largest lithium deposit in the USA"

Sediment Hosted Lithium Deposits

Tonnes v Grade (contained LCE indicated by size of bubble)



DEPOSIT	OWNER	COG (ppm Li)
McDermitt	ASX: JRL	1000
Sonora	ATM: BCN	1000
Thacker Pass	TSX: LAC	2000
Clayton Valley	TSX: CYP	900
Tonopah	TSX: LI	1000
Rhyolite Ridge	ASX: INR	5000 Bo*
Big Sandy	ASX: HWK	800

(*deposit includes Bo credits)

Source: Various company reports

Metallurgy

Excellent results

Leach recycling tests show excellent recoveries

Lithium recoveries of >95% with short residence times, using either H_2SO_4 or HCl

Potential for beneficiation via attrition scrubbing resulting in 60% uplift of head grade

Potential to reduce acid consumption via removal of acid consuming minerals

Significant cost savings indicated from recent tests - positive for project economics

Testwork to identify further savings underway

Refer ASX release 22/02/2021, "More Positive Metallurgical Results from McDermitt"

Refer ASX release 17/08/2020, "More encouraging metallurgical results from McDermitt"

Refer ASX release 16/06/2020, "Encouraging metallurgical test results from McDermitt"

McDermitt 2021 Forward Planning

Additional metallurgical optimisation continues - further reducing costs

Produce Lithium Carbonate for testing by potential partners

Mining studies and possible scoping study: June Q

Submit 2021 drilling program for permitting: April

Accelerate environmental studies

Engagement with US investors and potential partners ongoing



Widgiemooltha Project WA

1,000km² 100% Jindalee owned holding in highly fertile district

Excellent infrastructure supporting nearby Gold, Nickel, Lithium and Caesium mines

Recent discoveries confirm significant potential

Invincible (Au)

Gold Fields Limited

Baloo (Au)

Kakora Resources Ltd

Mandilla (Au)

Anglo Australian Resources

Cassini (Ni)

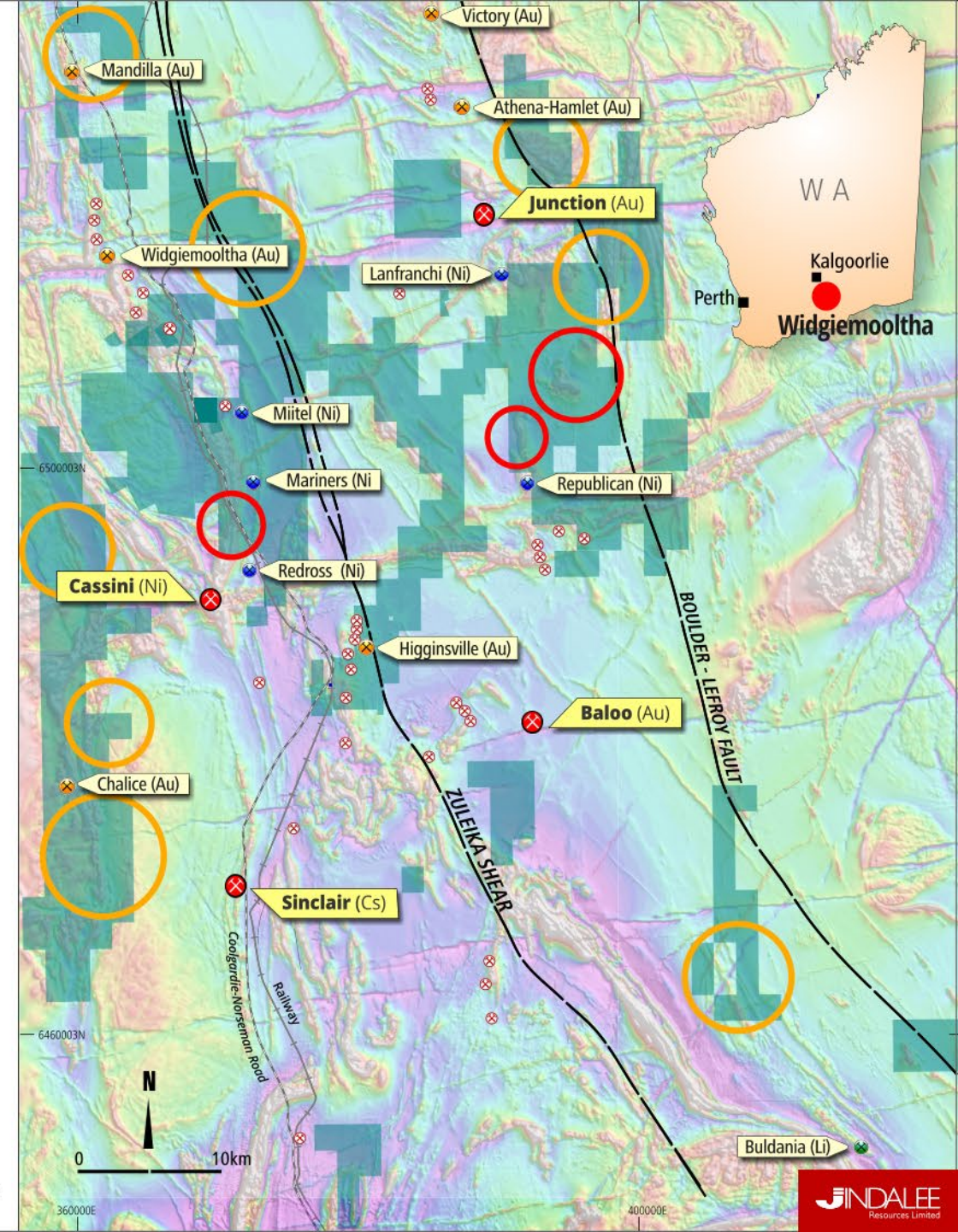
Mincor Resources NL

Sinclair Zone (Cs)

Essential Metals Ltd

Program of works for testing Gold targets approved

Program of works to test Nickel targets being prepared



*Note that some portions of Jindalee tenements are excised by pre-existing leases

Disclaimer

This presentation has been prepared by Jindalee Resources Limited (“Jindalee or JRL”) and is authorised by Lindsay Dudfield Executive Director of Jindalee. The information contained in this presentation is a professional opinion only and is given in good faith. Certain information in this presentation has been derived from third parties and though Jindalee has no reason to believe that it is not accurate, reliable or complete, it has not been independently audited or verified by Jindalee. Jindalee makes no representations or warranty as to the accuracy, reliability or completeness of information in this document and does not take responsibility for updating any information or correcting any errors or omissions which may become apparent after this presentation is released.

Any forward looking statements included in this presentation involve subjective judgement and analysis and are subject to uncertainties, risks and contingencies, many of which are outside the control of, and may be unknown to Jindalee. In particular they speak only to the date of this presentation, they assume the success of Jindalee’s strategies, and they are subject to significant regulatory, business, competitive and economic uncertainties and risk. Actual future events may vary materially from the forward looking statements and the assumptions on which these are based. Recipients of this presentation are cautioned not to place undue reliance on such forward looking statements.

To the extent permitted by law, Jindalee and its officers, employees, related bodies corporate and agents disclaim all liability, direct, indirect or consequential (and whether or not arising out of the negligence, default, or lack of care of Jindalee and/or any of its agents) for any loss or damage suffered by a recipient or other persons out of, or in connection with, any use or reliance on this presentation or information. Nothing contained within this presentation should be construed as financial or investment advice. This presentation is for information purposes only. Neither this nor the information in it constitutes an offer, invitation, solicitation or recommendation in relation to the purchase or sale of Jindalee’s shares in any jurisdiction. This does not constitute investment advice and has been prepared without taking into account the recipient’s investment objectives, financial circumstances or particular needs and the opinions and recommendations in this presentation are not intended to represent recommendations of particular investments to particular persons. Recipients should seek professional advice when deciding if an investment is appropriate. All securities transactions involve risks, which include (among others) the risk of adverse or unanticipated market, financial or political developments.

All amounts are in A\$ unless stated otherwise.

For further information contact:

Lindsay Dudfield

Executive Director

Jindalee Resources Limited

E: enquiry@jindalee.net

T: +61 8 9321 7550

Karen Wellman

Chief Executive Officer

Jindalee Resources Limited

E: enquiry@jindalee.net

T: +61 8 9321 7550

Competent Persons Statement

The information in this presentation that relates to exploration results, exploration targets and mineral resources for the Company's projects was first released by the Company on the dates set out under the heading "Additional Information" on this page. The Company confirms that it is not aware of any new information or data that materially affects the information included in the relevant market announcements and, in the case of mineral resource estimates, that all material assumptions and technical parameters underpinning the estimates in the relevant market announcement continue to apply and have not materially changed

Additional Information

Additional details including JORC 2012 reporting tables, where applicable, can be found in the following Jindalee Resources' ASX announcements:

- 08/04/2021, "McDermitt Lithium Project confirmed as largest in USA"
- 31/03/2021, "Jindalee increases size of McDermitt Project by 67%"
- 15/03/2021, "\$9M raising to fund resource growth at McDermitt"
- 12/03/2021, "Final Assays Indicate Potential Scale of McDermitt"
- 22/02/2021, "More Positive Metallurgical Results from McDermitt"
- 14/01/2021, "Quarterly Activities and Cashflow Report"
- 17/08/2020, "More encouraging metallurgical results from McDermitt"
- 16/06/2020, "Encouraging Metallurgical Results from McDermitt"
- 19/11/2019, "Maiden Lithium Resource at McDermitt"



Thank you

Jindalee Resources Limited
Level 2, 9 Havelock Street
West Perth WA 6005
AUSTRALIA

www.jindalee.net.au
enquiry@jindalee.net



ASX: JRL