



ARROW  
MINERALS

An exciting portfolio of high impact gold exploration assets  
across West Africa & Western Australia

August 2019

ersonal use only

# Disclaimer

- This presentation has been prepared by Arrow Minerals Limited (**Arrow** or the **Company**). It contains general information about the Company's activities current as at the date of the presentation. The information is provided in summary form and does not purport to be complete. This presentation is not to be distributed (nor taken to have been distributed) to any persons in any jurisdictions to whom an offer or solicitation to buy shares in the Company would be unlawful. Any recipient of the presentation should observe any such restrictions on the distribution of this presentation and warrants to the Company that the receipt of the presentation is not unlawful. It should not be considered as an offer or invitation to subscribe for or purchase any securities in the Company or as an inducement to make an offer or invitation with respect to those securities. No agreement to subscribe for securities in the Company will be entered into on the basis of this presentation or any information, opinions or conclusions expressed in the course of this presentation.
- This presentation is not a prospectus, product disclosure document or other offering document under Australian law or under any other law. It has been prepared for information purposes only. This presentation contains general summary information and does not take into account the investment objectives, financial situation and particular needs of any individual investor. It is not financial product advice and investors should obtain their own independent advice from qualified financial advisors having regard to their objectives, financial situation and needs. Arrow nor any of their related bodies corporate is licensed to provide financial product advice.
- This presentation and information, opinions or conclusions expressed in the course of this presentation contains forecasts and forward looking information. Such forecasts, projections and information are not a guarantee of future performance, involve unknown risks and uncertainties. Actual results and developments will almost certainly differ materially from those expressed or implied.
- There are a number of risks, both specific to Arrow, and of a general nature which may affect the future operating and financial performance of Arrow, and the value of an investment in Arrow including and not limited to title risk, renewal risk, economic conditions, stock market fluctuations, manganese demand and price movements, timing of access to infrastructure, timing of environmental approvals, regulatory risks, operational risks, reliance on key personnel, reserve estimations, native title risks, foreign currency fluctuations, and mining development, construction and commissioning risk.
- You should not act or refrain from acting in reliance on this presentation, or any information, opinions or conclusions expressed in the course of this presentation. This presentation does not purport to be all inclusive or to contain all information which its recipients may require in order to make an informed assessment of the prospects of Arrow. You should conduct your own investigation and perform your own analysis in order to satisfy yourself as to the accuracy and completeness of the information, statements and opinions contained in this presentation before making any investment decision. Recipients of this presentation must undertake their own due diligence and make their own assumptions in respect of the information contained in this presentation and should obtain independent professional advice before any decision based on the information. No representation or warranty, express or implied, is made in relation to the fairness, accuracy or completeness of the information, opinions and conclusions expressed in the course of this presentation. To the maximum extent permitted by law, no representation, warranty or undertaking, express or implied, is made and, to the maximum extent permitted by law, no responsibility or liability is accepted by the Company or any of its officers, employees, agents or consultant or any other person as to the adequacy, accuracy, completeness or reasonableness of the information in this presentation. To the maximum extent permitted by law, no responsibility for any errors or omissions from this presentation whether arising out of negligence or otherwise is accepted. An investment in the shares of the Company is to be considered highly speculative.
- The exploration targets or conceptual exploration targets in this presentation or expressed during the course of this presentation are subject to completion of the necessary feasibility studies, permitting and execution of all necessary infrastructure agreements. In relation to any statements pertaining to future exploration targets or conceptual exploration targets, the nature of the exploration target means that the potential quantity and grade is conceptual in nature, that there has been insufficient exploration to define a Mineral Resource and that it is uncertain if further exploration will result in the determination of a Mineral Resource.
- This presentation and information, opinions or conclusions expressed in the course of this presentation should be read in conjunction with Arrow's other periodic and continuous disclosure announcements lodged with the ASX, which are available on the Arrow website.
- Some statements in this presentation regarding future events are forward-looking statements. They involve risk and uncertainties that could cause actual results to differ from estimated results. Forward-looking statements include, but are not limited to, statements concerning the Company's exploration programme, outlook and target sizes. They include statements preceded by words such as "potential", "target", "scheduled", "planned", "estimate", "possible", "future", "prospective" and similar expressions.
- The information in this presentation relating to Burkina Faso exploration targets and exploration results are based on information reviewed and checked by Mr Tommy McKeith who is a Fellow of The Australasian Institute of Mining and Metallurgy. Mr McKeith is a director of Boromo Gold Limited and has sufficient experience which is relevant to the style of mineralisation and type of deposit under consideration and to the activity which he is undertaking to qualify as a Competent Person as defined in the 2012 edition of the "Australasian Code for Reporting Exploration Results, Mineral Resources and Ore Reserves". The information in this presentation that relates to Australian exploration results and targets is based on information compiled by Dr Frazer Tabearth who is a Member of The Australian Institute of Geoscientists. Dr Tabearth is a Director of Arrow and has more than five years' experience which is relevant to the style of mineralisation and type of deposit under consideration and to the activity which he is undertaking to qualify as a Competent Person as defined in the 2012 Edition of the "Australasian Code for Reporting of Exploration Results, Minerals Resources and Ore Reserves". Mr McKeith and Dr Tabearth consent to the inclusion in the presentation of the matters based on his information in the form and context in which it appears.

**Market Capitalisation<sup>1,2</sup>**  
**\$8.1M**

**Cash and Investments<sup>3</sup>**  
**\$3.3M**

## **Prominent Mining Executives**

Experience at Rio Tinto, BHP, WMC,  
Evolution Mining, Saracen

## **Strategic Alliance with Capital Drilling**

Experienced West African drilling company to  
manage high impact drilling in Burkina Faso

## **Major Shareholders**



## **Immediate Activity**

September – Initial Assay Results from Burkina Faso  
October – Continued exploration at Strickland, WA  
November – Drilling at Divole West, Burkina Faso  
December – Drilling at Divole East, Burkina Faso  
December – Assay Results continue from Burkina Faso  
Q1 2020 – Drilling in Burkina Faso and Western Australia

1. Share price of 1.0¢ as at 25 July 2019.

2. Shares on issue – 810.8M (assumes acquisition of Boromo Gold Limited which is subject to shareholder approval, scheduled for completion in mid-August 2019).

3. Cash and Investments as at 30 June 2019 plus proceeds of \$2.0M capital raising (subject to shareholder approval).

## Prominent Mining Executives

Board and Management Teams with considerable experience at Rio, BHP, WMC, Evolution, Saracen

### Board of Directors



#### **Dr Frazer Tabeart – Chairman**

25 years experience in exploration and mining projects, including 16 years with WMC and 9 years with the Mitchell River Group of Companies. Member of the Australian Institute of Geoscientists and a member of the Society of Economic Geologists.



#### **Tommy McKeith – Non-Executive Director\***

Geologist with ~30 years experience in exploration, development and mining. Previous MD & director roles with ASX resource companies and executive roles in Gold Fields Ltd. Currently Chairman of Prodigy Gold and Non-Executive Director of Evolution Mining.



#### **Steven Michael – Executive Director**

15 years of investment banking and mining research experience with RBC Capital Markets, Macquarie Bank and NM Rothschild. Member of the Australian Institute of Company Directors and Chartered Accountants Australia & New Zealand.



#### **Morgan Ball – Non-Executive Director\***

Chartered Accountant with over 25 years of Australian and international experience. Previous Managing Director at BC Iron Ltd. Currently CFO of Saracen Minerals Ltd and Non-Executive Director at Chalice Gold Ltd.

### Management Team



#### **Howard Golden – CEO\***

Geophysicist with over 30 years experience in exploration across 6 continents. On discovery teams of Syama, Oyu Tolgoi, Agbaou and West Musgrave deposits. Senior roles in Nordgold, Rio Tinto, BHP and WMC. Significant operating experience throughout West Africa.



#### **Ballo Boreima – Burkina Faso Country Manager\***

Geologist with over 20 years experience in exploration and project construction in West Africa with Ashanti Goldfields, Etruscan Resources and Gold Fields Ltd. Instrumental in establishing the company in Burkina Faso.

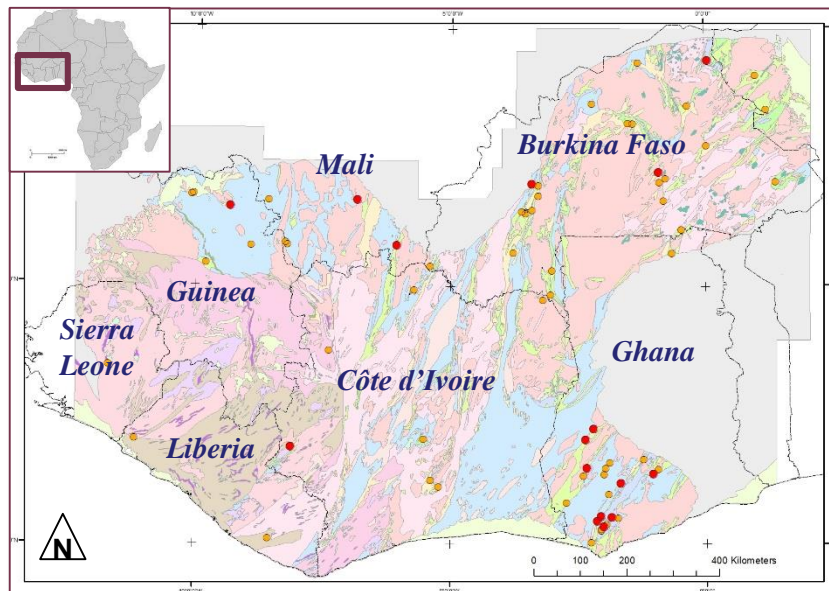
\* Subject to completion of the acquisition of Boromo Gold Limited.



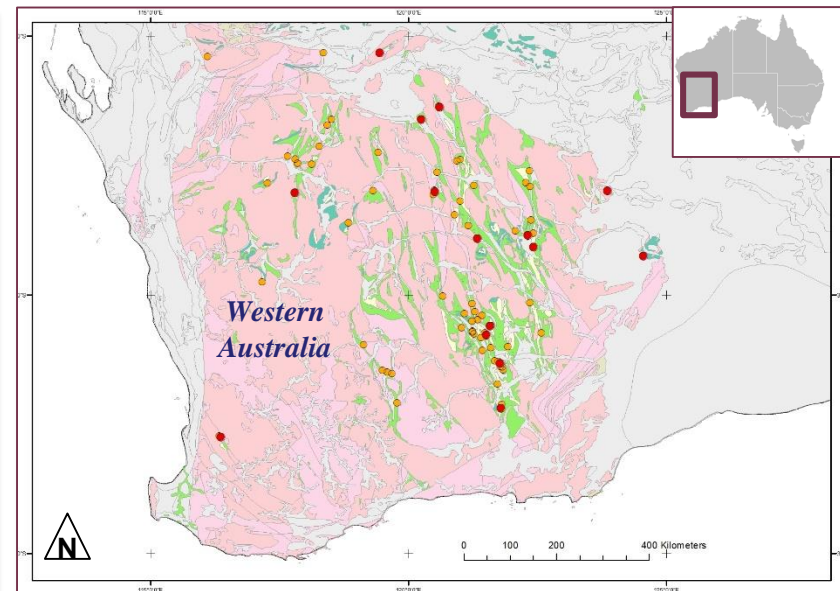
# Strategy: High Impact Exploration, Major Discoveries

- Exciting portfolio of gold exploration assets with potential for major discoveries
- Currently targeting spend 70% Burkina Faso and 30% Western Australia
- Gold exploration in two prolific gold provinces – **West African Craton** and **Yilgarn Craton** (Western Australia) – areas endowed with a very large number of >1Moz & >5Moz deposits
- Multi-disciplinary exploration team with a track record of exploration success and significant target/project generation capabilities to continue to augment the project pipeline

## West African Craton



## Yilgarn Craton



- Gold Deposit >1Moz
- Gold Deposit >5Moz

# Asset Overview – Burkina Faso

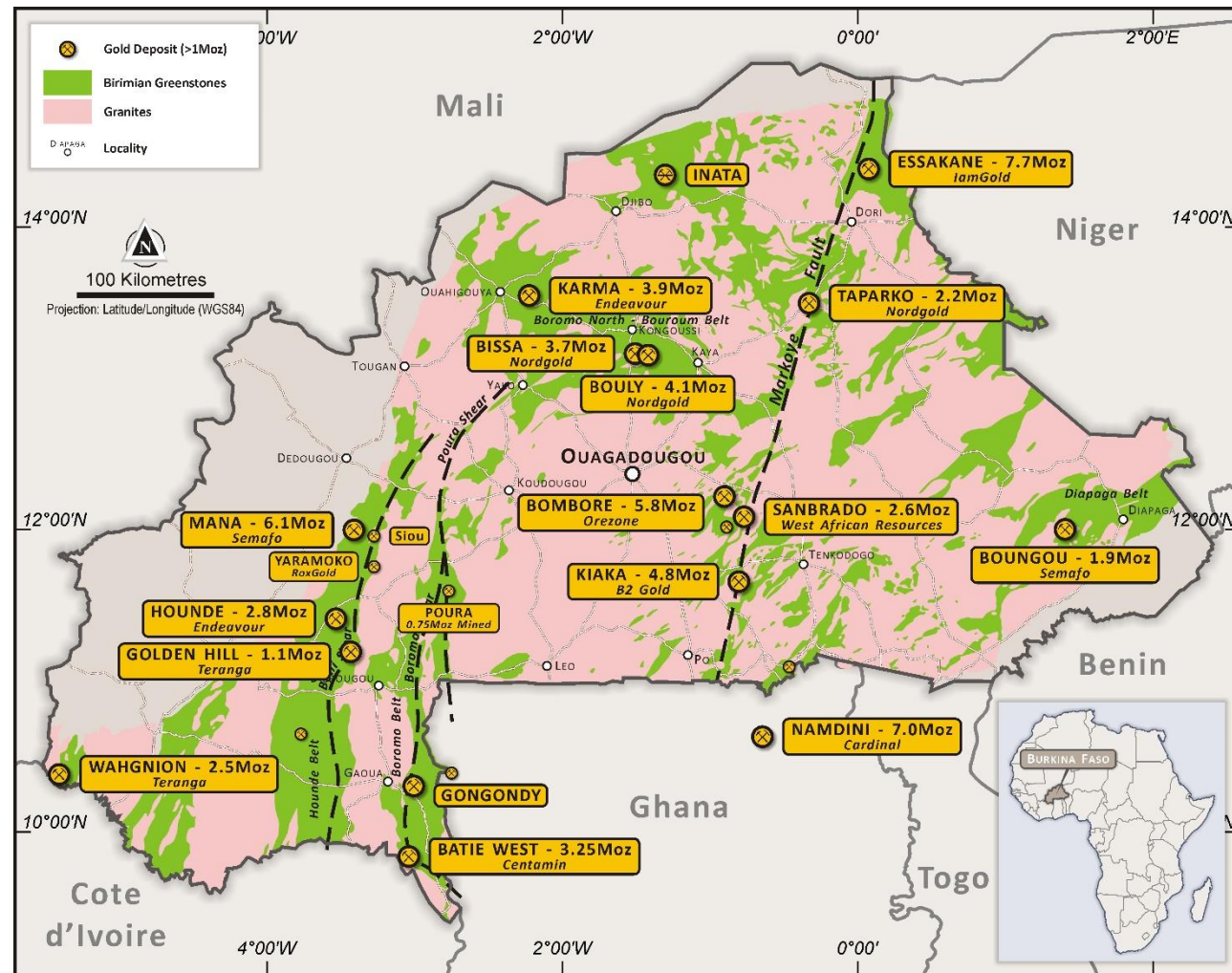
ersonal use only





# Profile of Burkina Faso

- Fourth largest gold producer in Africa
- Hosts 22% of the prospective Birimian Greenstone Belt
- Largest share of West African exploration expenditure - \$190m or 29% (2017)
- Favourable business environment
  - 100% foreign ownership in exploration
  - 90% foreign ownership in production (10% gov.)
  - 3-5% royalty on gold production
- Stable emerging democracy



# Burkina Faso Portfolio

## Divole East and West

- 211km<sup>2</sup> of tenements with high grade gold results from 2018 exploration work

## Boulsa

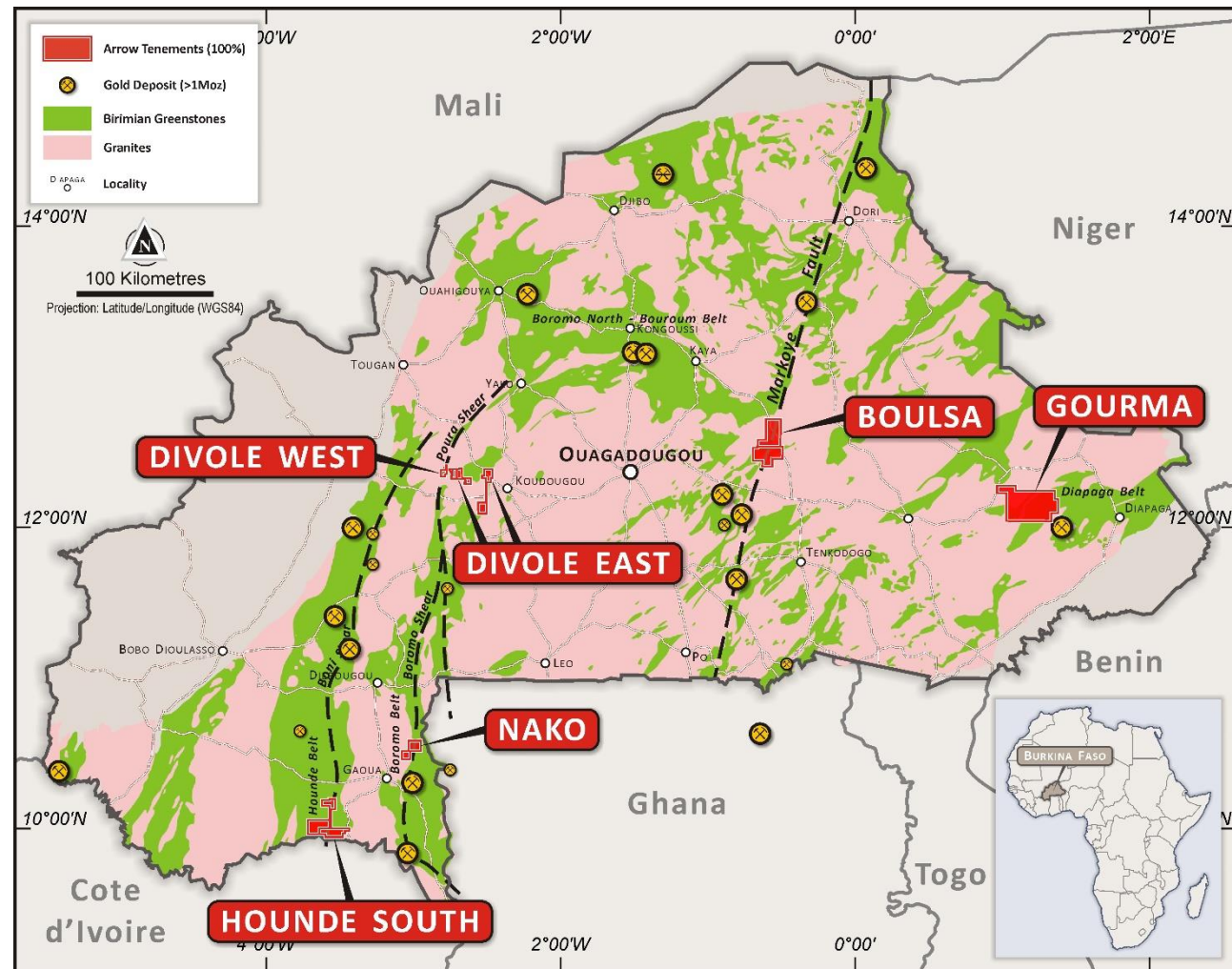
- 499km<sup>2</sup> of tenements on the Markoye Fault which hosts the Taparko, Sanbrado, Bombore, Essakane and Kiake gold deposits

## Hounde South / Nako

- 375km<sup>2</sup> of tenements in productive greenstone belts

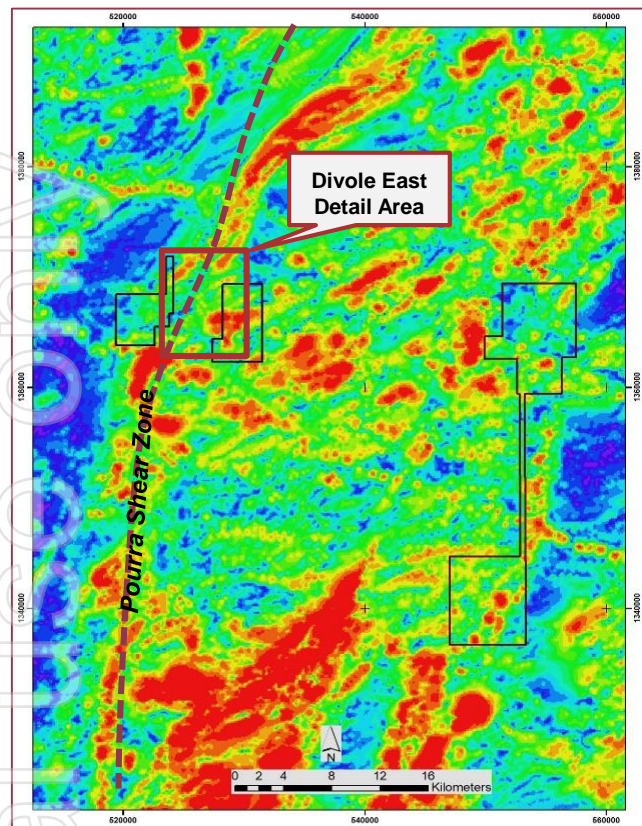
## Gourma

- 882km<sup>2</sup> of tenements abutting Semafo's Boungou deposit (0.5moz Au)

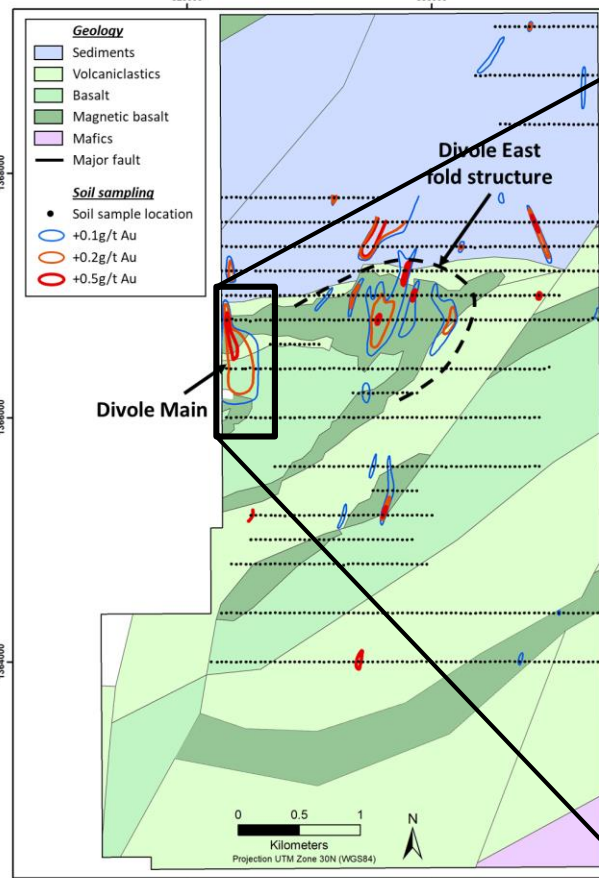




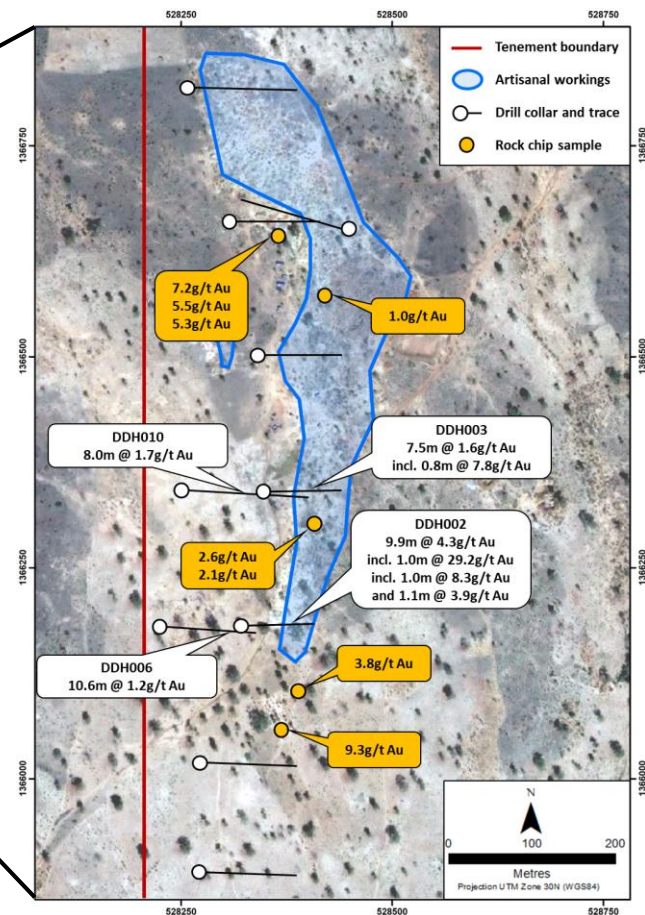
# Divole East



- Regional geophysics suggests a structure within the license area



- Soil sampling has identified two key areas of gold anomalism
- Detailed ground magnetic survey has highlighted an ENE-striking regional fold structure plunging gently to the ENE

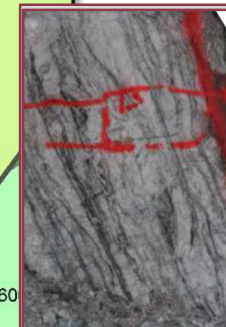
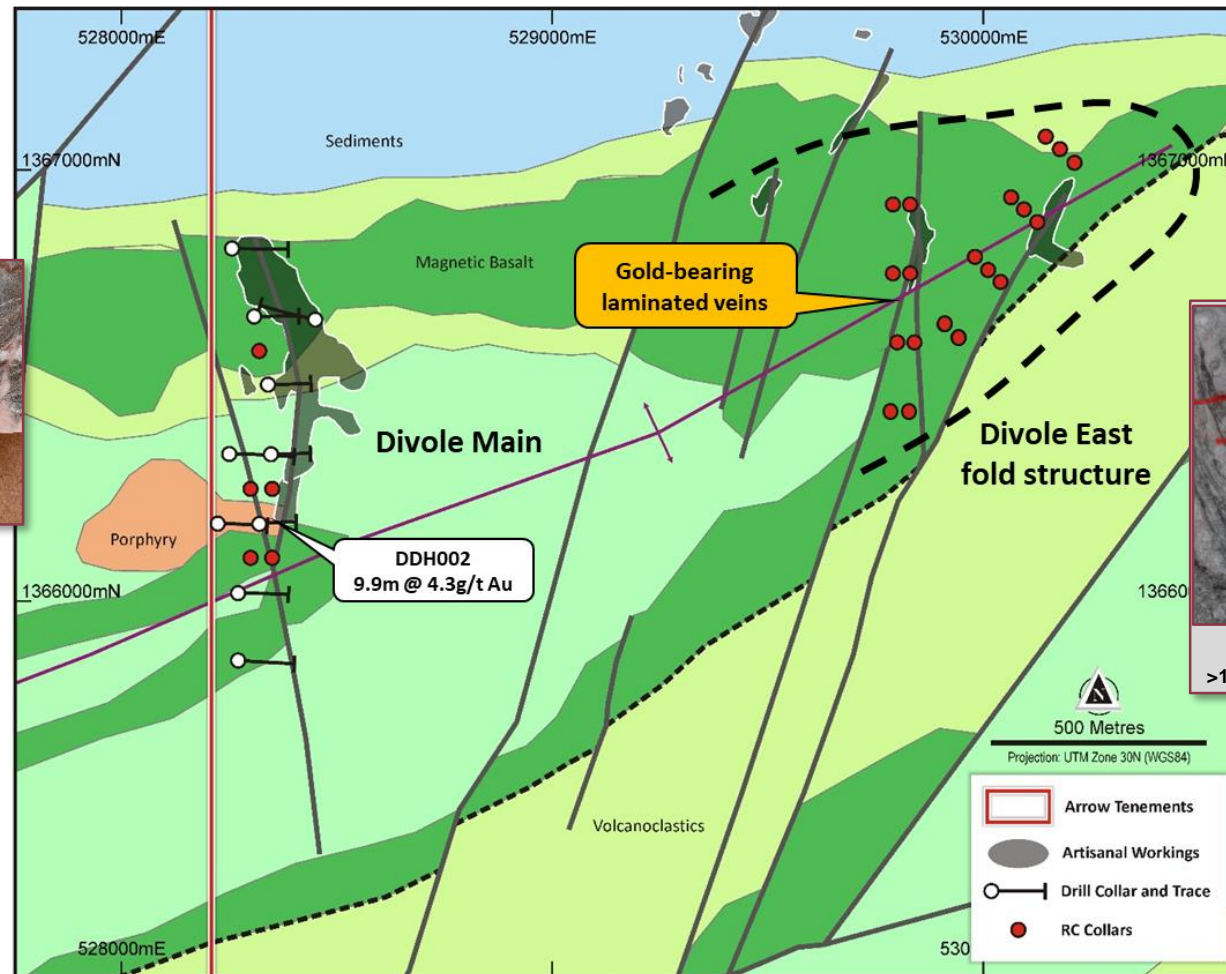


- Diamond drilling and rock chips at Divole Main have confirmed high-grade gold mineralisation, including 9.9m @ 4.3g/t Au<sup>1</sup>

<sup>1</sup> Refer ASX announcement 26/6/19

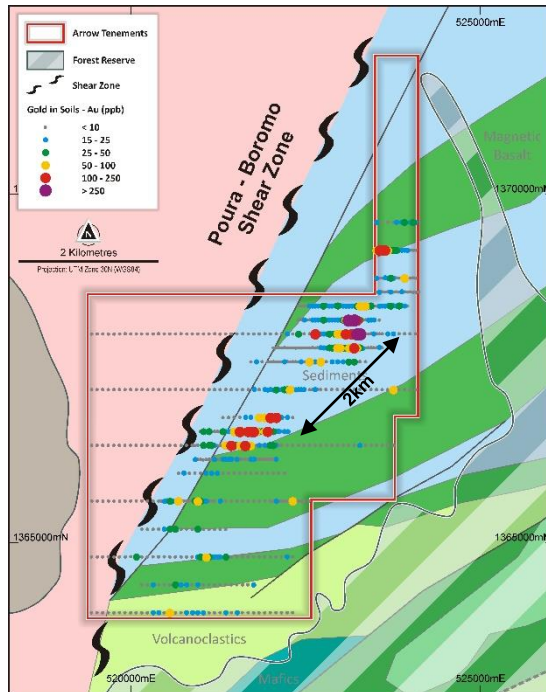
# Divole East – Ongoing Exploration

- 24 hole RC drilling programme completed in July 2019, following up soil and auger anomalies, drill intersections and outcropping gold-bearing laminated quartz veins
- Results expected in early September 2019

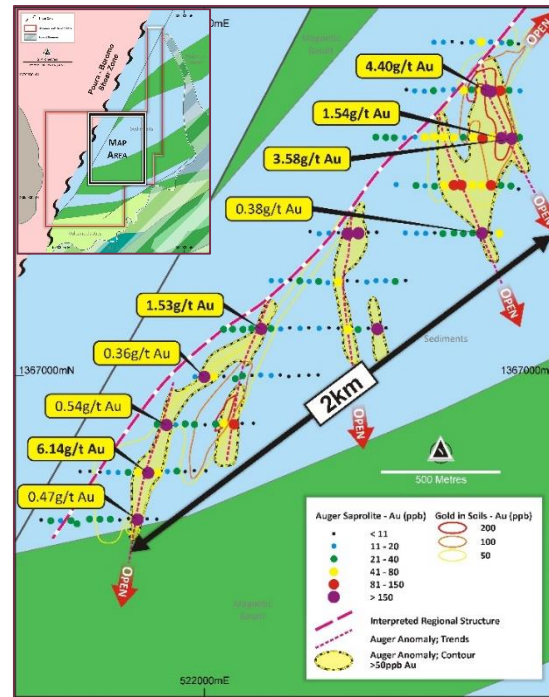




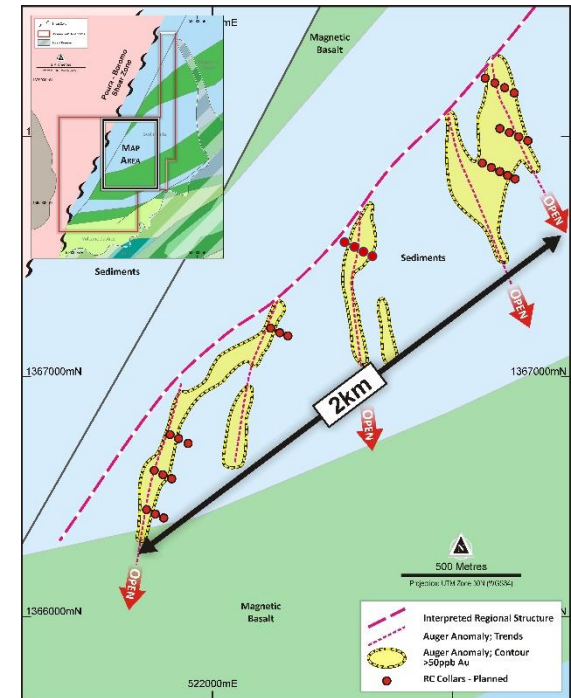
# Divole West – Drill-ready Targets



- Prospective geology with no previous exploration
- Targeted using extensive regional datasets



- Soil sampling and auger drilling complete
- Anomalies defined high priority drill targets

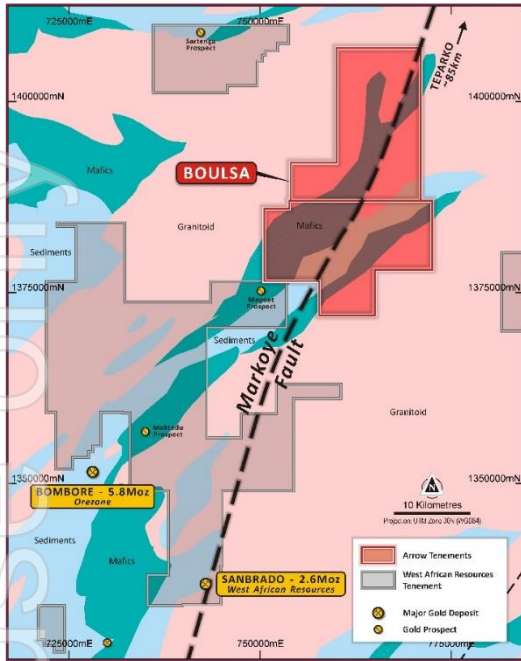


- RC drilling planned for Q3 2019 to test 2 km auger anomaly





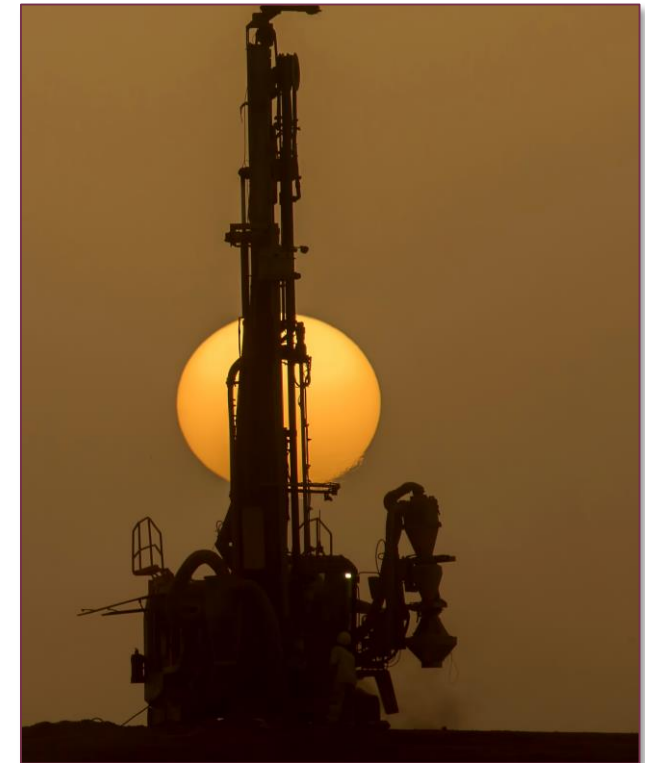
# Boulsa – Untested Potential



- On Markoye Fault (host of Sanbrado and Taparko)
- Geological contacts and shear zones favourable for gold deposition



- WAF Sanbrado data to be analysed in advance of 2019 field programme
- Permits recently granted
- High priority target for regolith analysis and geochemistry



- Year-round drilling facilitated by sealed road access



## Asset Overview – Western Australia

ersonal use only



## Strickland Gold (100%)

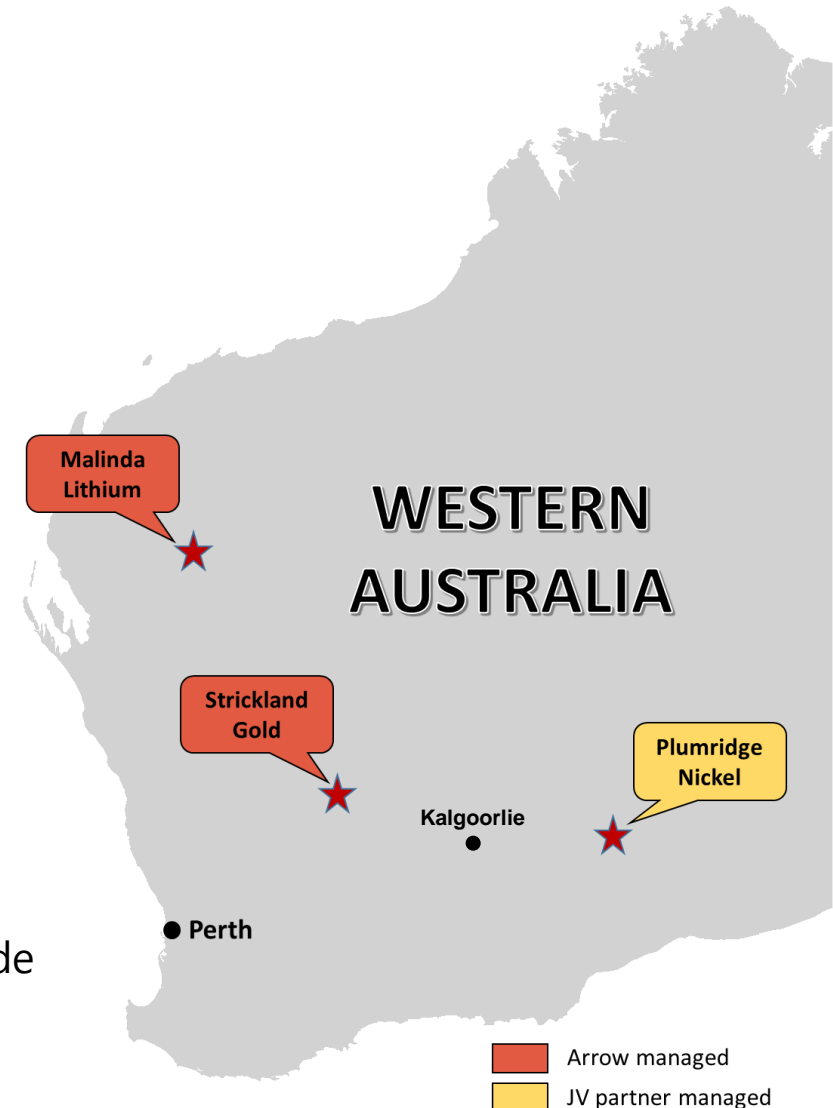
- 1,200km<sup>2</sup> of exploration licences across two unexplored greenstone belts, 180km north-west of Kalgoorlie
- Multiple camp-scale gold prospects defined

## Malinda Lithium (100%)

- Greenfields lithium/tantalum discovery in the Gascoyne Region
- High grade lithium (spodumene) up to 2% Li<sub>2</sub>O in first pass drilling<sup>1</sup>

## Plumridge Nickel (IGO 90%, AMD 10%)

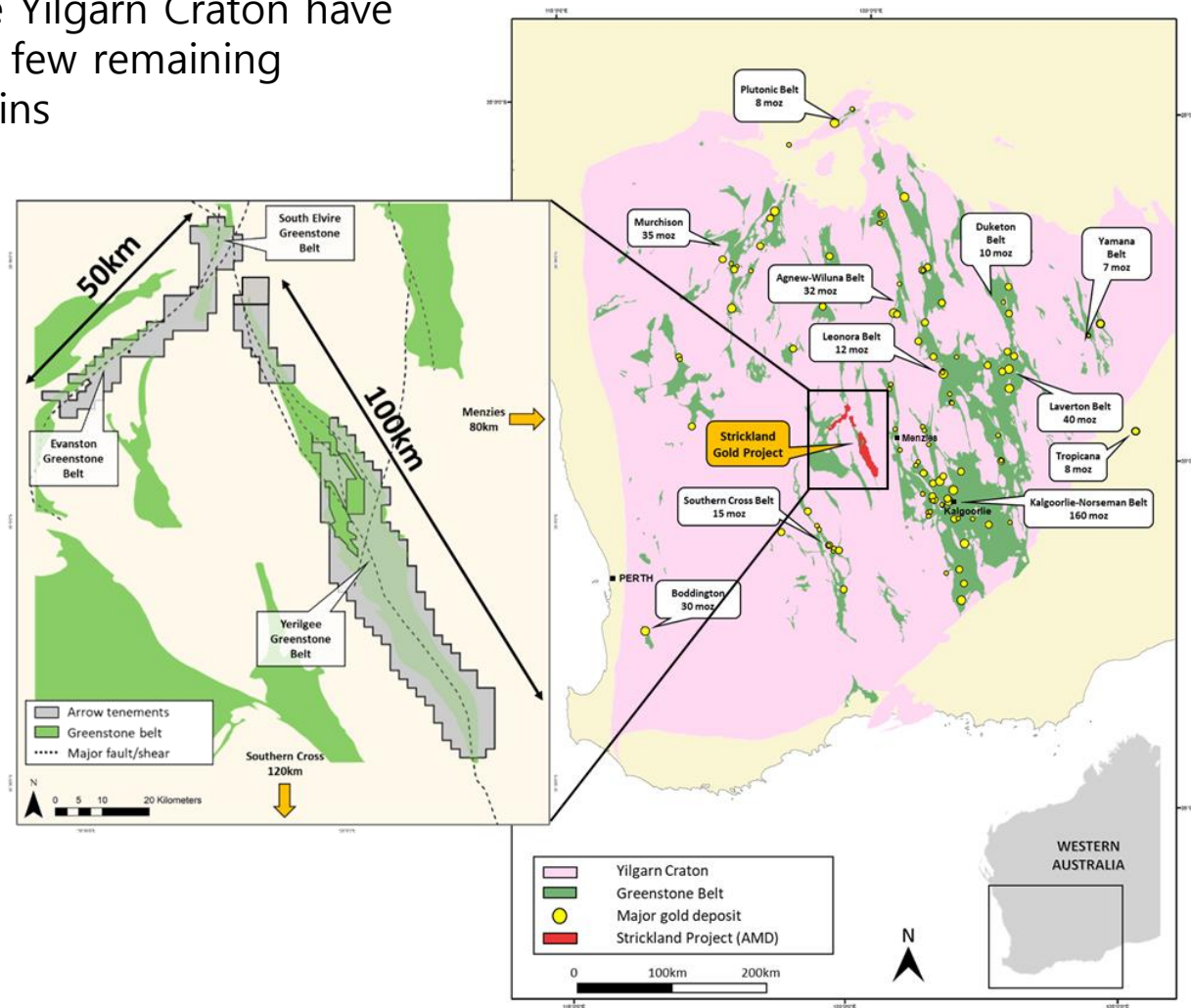
- Joint venture with IGO covering 2,500km<sup>2</sup> of tenements in the Fraser Range
- Highly prospective for massive nickel-copper sulphide deposits





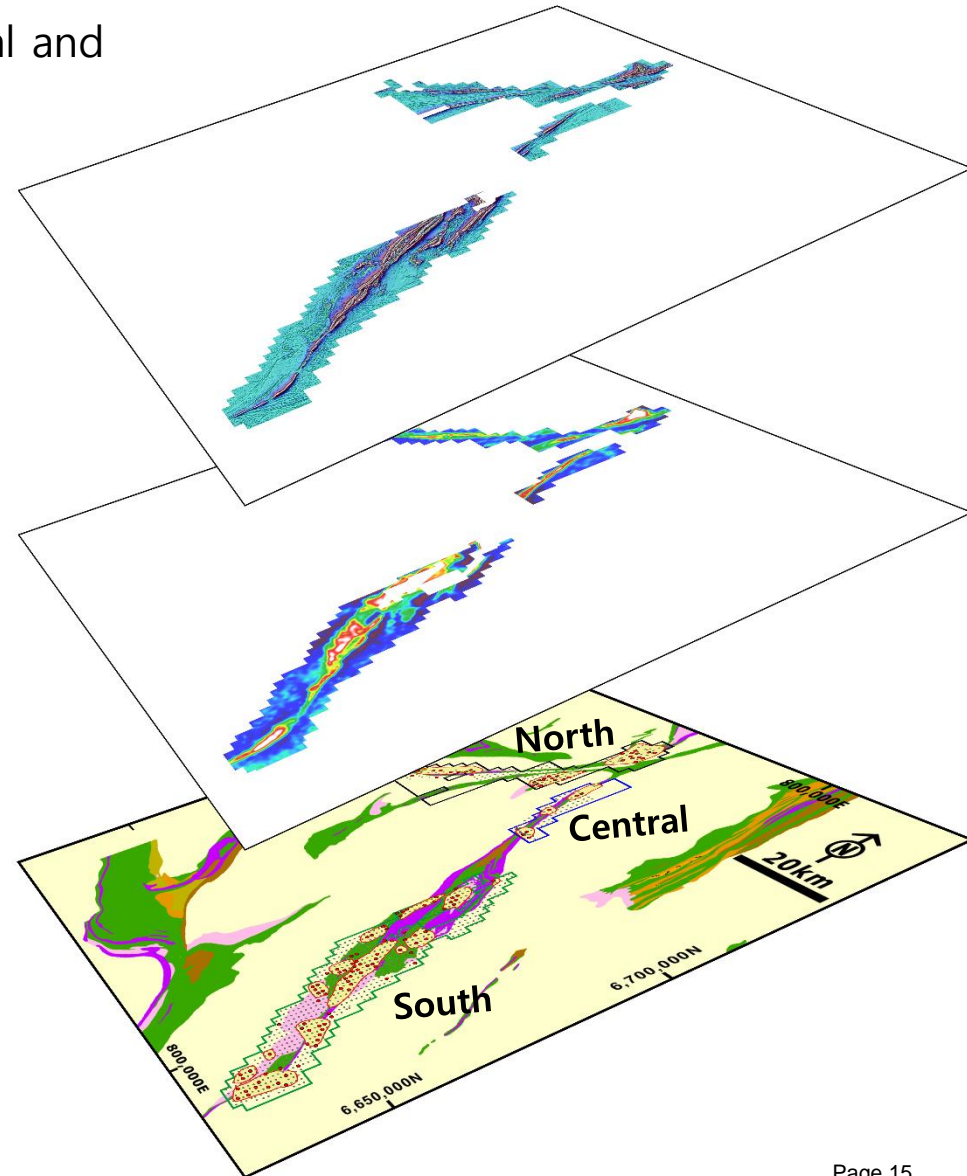
# Strickland Gold Project

- All major greenstone belts in the Yilgarn Craton have >8moz of gold endowment with few remaining under-explored greenstone terrains
- Strickland tenements were held by iron ore companies since the late-1990's
- No modern gold exploration
- Project covers over 150 strike km of greenstone belts and regional shear zones
- Known gold occurrences at Evanston and Rainy Rocks
- Exploration targeting several gold deposit types found from Southern Cross to Menzies



# Strickland: Discovery of Greenfields Gold Camps

- Activity focused in three areas – North, Central and South
- 19 camp-scale gold targets identified
- Project-wide datasets have been collected to enable effective ranking of targets
- Geochemistry:
  - 1km x 1km BLEG sampling over entire project
  - 400m x 100m soil sampling on all targets
  - In-fill soil sampling prior to drilling
- Geophysics:
  - Project-wide detailed aeromagnetic surveys
  - 800m x 400m ground gravity survey
- Drilling:
  - Bedrock drilling completed over 5 areas with gold mineralisation in all prospects



# Significant Activity to Drive Value Re-Rating

- Immediate focus on high ranking / drill-ready targets: Divole East, Divole West, Strickland North & South
- Mix of geographical locations means exploration will continue year-round
- Anticipated exploration expenditure budget of \$2 million for next 12 months
- Aim is exploration/total expenditure >75%
- **Divole East** → RC drilling (Complete)
  - **Divole East** → Assay results (Sep 19)
    - **Strickland** → Project review (Oct 19)
      - **Divole West** → RC drilling (Nov 19)
        - **Divole East** → RC drilling (Dec 19)
          - **Boulsa** → Geochem survey (Jan 20)
            - **Divole West** → RC drilling (Feb 20)
              - **Nako & Hounde South** → Geochem survey (Mar 20)

**2019/20 will see all projects  
advanced to drilling or drill-ready targets**



## **Arrow Minerals Limited**

ASX Code: AMD

Unit 18, 40 St Quentin Ave  
Claremont WA 6010

Phone: +61 8 9383 3330

Email: [info@arrowminerals.com.au](mailto:info@arrowminerals.com.au)

Website: [arrowminerals.com.au](http://arrowminerals.com.au)

# Appendix 1 – Capital Structure incl. Boromo Gold

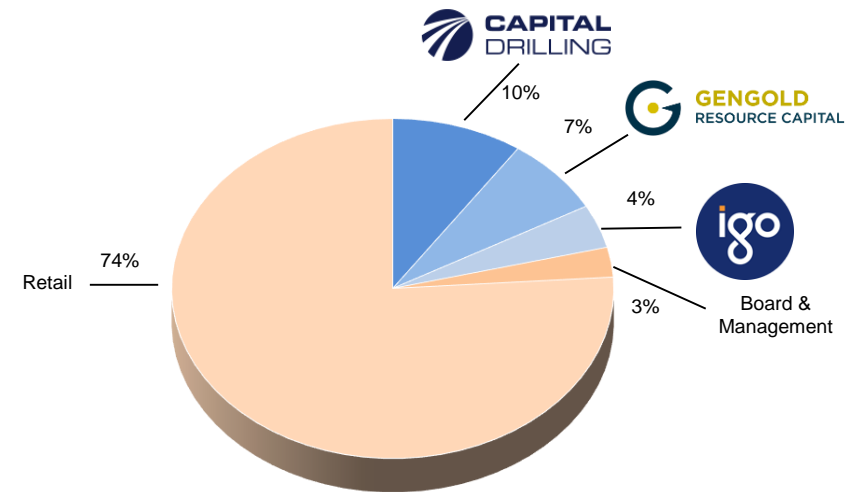
The Acquisition of Boromo Gold is subject to Arrow Minerals' shareholder approval at a shareholder meeting expected to be held on 15 August 2019 (see ASX Announcement 26 June 2019)

	Arrow (pre transaction)	Acquisition of Boromo	Coincident Placement	Arrow (post transaction)
Shares on issue	314.5m	289.3m	207.0m <sup>3</sup>	810.8m
Performance rights (see below)	-	209.0m	-	209.0m
Options on issue	142.6m	-	100.0m	242.6m
Market capitalisation <sup>1</sup>	\$3.1m	-	-	\$8.1m
Cash and investments <sup>2</sup>	\$1.3m	-	\$2.1m <sup>4</sup>	\$3.4m
Enterprise Value	\$2.8m	-	-	\$4.7m

1. Share price of 1.0¢ (25 July 2019)
2. Cash and investments as at 30 June 2019
3. Capital raising of \$2.0m at 1¢ per share
4. Proceeds of capital raising before costs

## Performance Rights vest in three equal tranches:

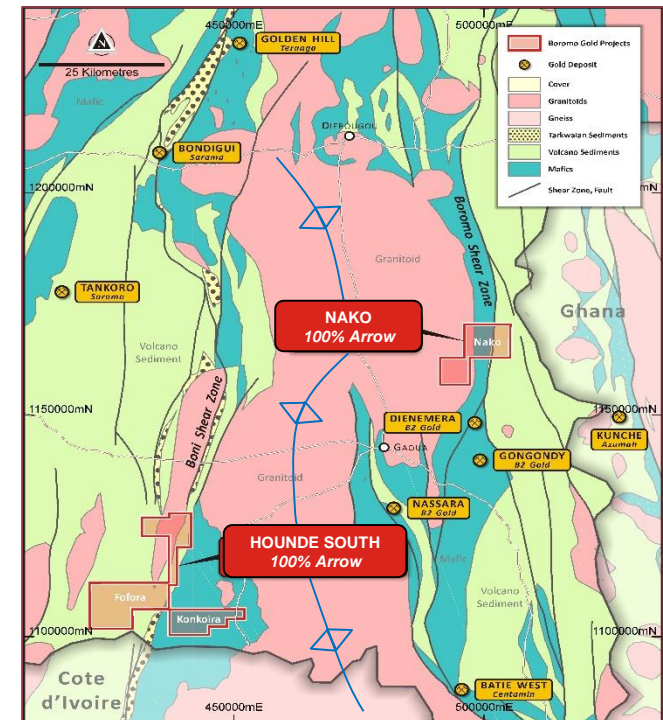
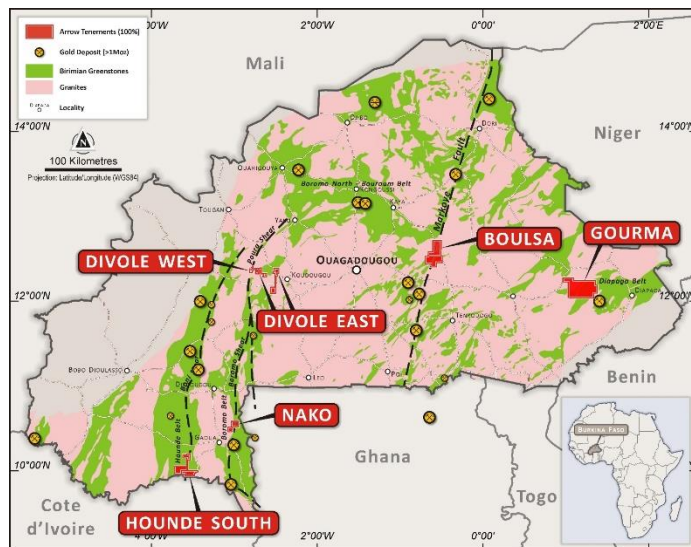
- Tranche 1 – at least two mineralised drill holes of +25 gram metres Au (grade x width) with a cut-off grade of 0.5g/t Au
- Tranche 2 – JORC compliant resource of at least 0.5Moz at a cut-off grade of 0.5g/t Au
- Tranche 3 – JORC compliant resource of at least 1.0Moz at a cut-off grade of 0.5g/t Au



Transaction Timetable	Indicative Date
Tranche 1 Placement Settlement	4 July 2019
Notice of Meeting Distributed	9 July 2019
General Meeting – Acquisition / Placement	15 August 2019
Completion of Acquisition	19 August 2019
Tranche 2 Placement Settlement	19 August 2019

# Appendix 2 – Nako & Hounde South, Burkina Faso

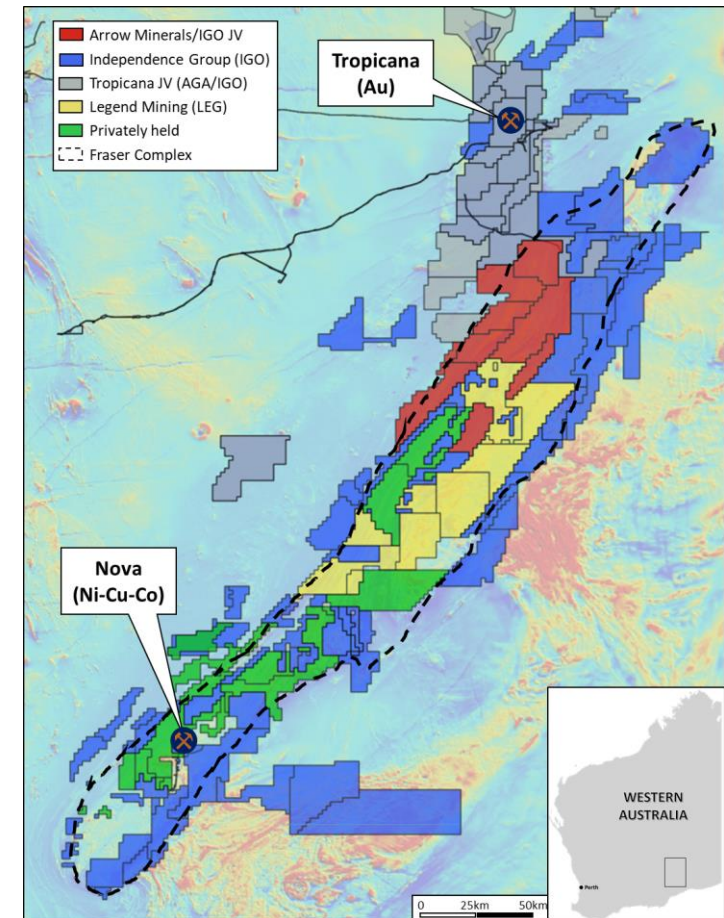
- On Boromo and Boni Shear zones
- Nako 90 km north of Centamin's Batie West deposit
- Hounde South 120 km south of Teranga's Golden Hill deposit
- Stream sampling complete – results pending
- Follow-up geochem and drill targeting planned





# Appendix 3 – Plumridge Nickel JV, WA

- Plumridge Nickel JV with **Independence Group NL (ASX: IGO)**, covering 8 tenements in the Fraser Range Complex
  - IGO – A\$3.0bn market cap, owns 100% of the Nova Ni-Cu-Co mine and 30% interest in Tropicana gold mine
- IGO 90%, AMD 10% - AMD can elect to contribute or covert to a 1% NSR royalty
- Arrow has acquired several project-wide geophysical and geological datasets – IGO can “hit the ground running”
- Over the past 18 months, IGO has spent over \$7M on the Project:
  - Project-wide Spectrem AEM survey
  - Project-wide aircore drilling programme (3km x 800m)
  - MLEM over several conductors
  - RC drilling of four conductor plates
- IGO is introducing a diamond drill rig to further test the previously defined Perle and Mafic conductors, in addition to new MLEM targets, Regal and Meera
- New targets will be drilled in 2H 2019



# Appendix 4 – Malinda Lithium Project, WA



- **Over 1,100km<sup>2</sup> of tenements** within 10km of the Thirty Three Supersuite – dominant tenement position in the Gascoyne lithium region
- Stream sediment sampling, rock chipping and soil sampling identified a significant LCT prospect covering 1.8km x 1.2km
- Several outcropping pegmatites identified with lithium grades up to 3.8% Li<sub>2</sub>O in rock chips<sup>1</sup>

