





Disclaimer

Preparation

This Presentation has been prepared to provide prospective investors in Great Northern Minerals Limited, ACN 000 002 111, ("The Company" or "Great Northern Minerals"), with general information to assist them in deciding whether they wish to undertake their own investigation and/ or consider a possible investment in the Company or the Company's projects.

This Presentation has not been independently verified for reliability, completeness or accuracy. No representation is made that such information and materials are reliable, complete or accurate. This Presentation is not a prospectus and does not constitute an offer or invitation or recommendation to any person and has been prepared solely for use by persons who are deemed to be "sophisticated investors" as described in the Corporations Act.

Projections and Assumptions

The projections and assumptions in this Presentation are indicative only and are not and should not be relied upon as representations as to future matters. The projections are based on assumptions that may or may not prove to be correct. The recipient must make their own independent assessment and investigation of those projections and assumptions. Investors will be required to undertake at their cost, any additional works needed for an investment decision.

Disclaimer

The Company and its respective shareholders, directors, partners, employees, officers, agents, consultants or advisors disclaim (to the maximum extent permitted by law) all duties and liabilities, including liability for negligence, for any loss or damage which is suffered or incurred by any person acting on any information provided or omitted to be provided by any of them in connection with an investment in The Company or any statements, opinions or matters (expressed or implied) arising out of, or contained in, or derived from, such information

No Offer, Invitation, Recommendation /Advice

The information set out in this Presentation does not constitute an offer or invitation to subscribe for securities in The Company or investment in the assets of the Company, or a recommendation by The Company to any person in respect of any matter.

Competent Persons Statement

The information in this report that relates to Exploration Results and Mineral Resources is based on information compiled by Simon Coxhell (Exploration Results), the Technical Director of Great Northern Minerals, and Andrew Beaton (Mineral Resources) a part time consultant to Great Northern Minerals. Mr Coxhell and Mr Beaton are both members of the Australasian Institute of Mining and Metallurgy and have sufficient experience of relevance to the styles of mineralisation and type of deposit under consideration and to the activity which they are undertaking to qualify as Competent Persons as defined in the 2012 Edition of the "Australasian Code for Reporting of Exploration Results, Mineral Resources and Ore Reserves." Mr Coxhell and Mr Beaton consent to the inclusion in this report of the matters based on their information in the form and context in which it appears.

Refer to previous ASX announcements on the 14 May 2019, 20 June 2019, 4 July 2019, 11 July 2019, 5 August 2019, 15 August 2019, 25 November 2019, 10 December 2019, 12 December 2019, 16 December 2019, 20 December 2019, 23 December 2019 and 28 January 2020 in respect of historic drilling intersections, exploration targets and mineral resources. Great Northern Minerals is not aware of any new information or data that materially affects the information included in the relevant market announcements listed.



Corporate Snapshot

Board of Directors

Chairman – Kim Robinson

Managing Director – Cameron McLean

Technical Director – Simon Coxhell

Non Executive Director - Simon Peters

Company Secretary – Aida Tabakovic

Shareholders

Shares on Issue 902,656,446

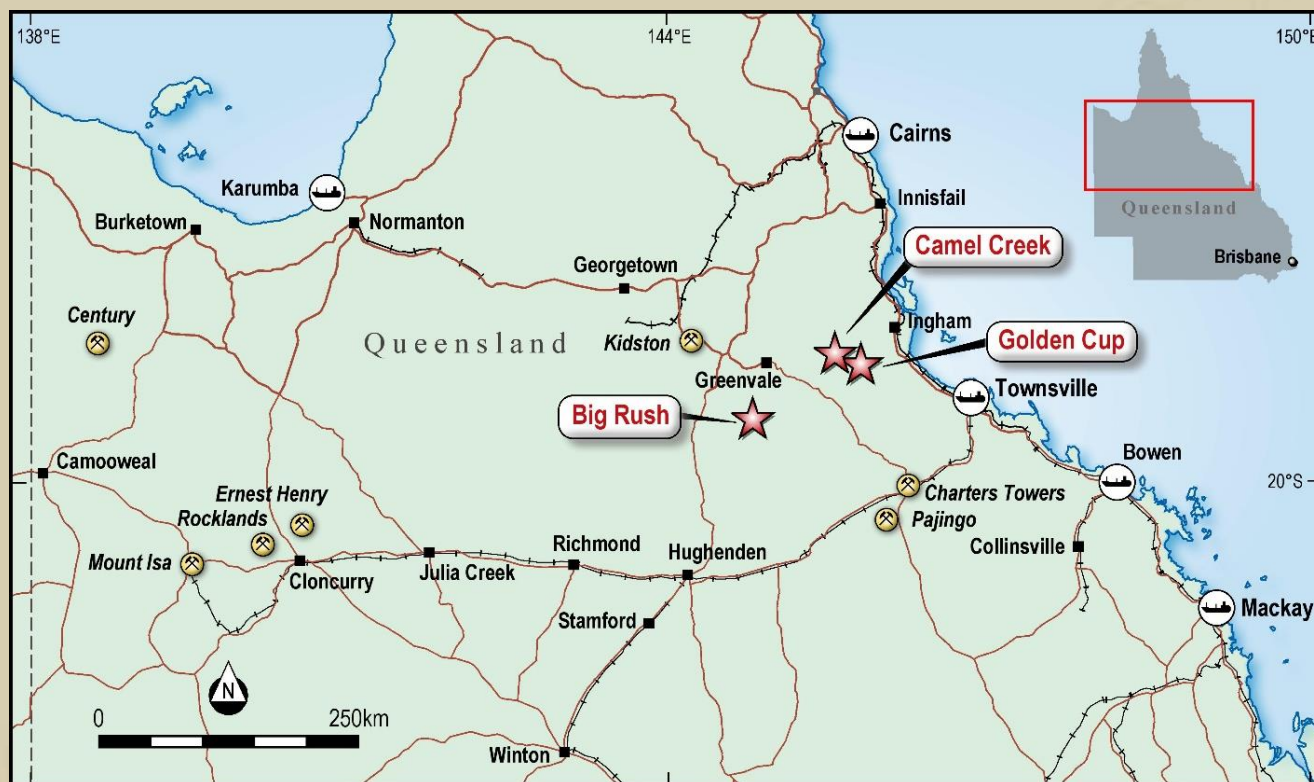
Options on Issue 361,229,208

Market Capitalisation \$14 million

Top 20 Holders 49%

Cash \$1.4 million

Location Plan





Investment Highlights

- Highly active explorer in a goldfield with **million ounce** potential (tenure covers 695 km²). 100% owned with no royalties
- Maiden gold resource of **30,000 ounces** estimated at Golden Cup in December 2019.
- Maiden gold resource of **47,000 ounces** estimated at Big Rush in February 2020.
- Excellent exploration upside supported by:
 - Previous mining to only shallow depths (<30 m)
 - Limited modern or systematic exploration
 - High-grade drill intersections beneath open pits &
 - Significant Exploration Targets defined
- Gold resources located on granted Mining Leases.

Gold Resources - Golden Ant Project

Project	Tonnes	Grade (g/t Au)	Ounces (Gold)
Golden Cup	256,504	3.6	29,721
Big Rush	558,322	2.62	47,006
TOTAL	814,826	2.93	76,727

Nb. Resources tabled above were estimated above a 0.75 g/t Au cut-off grade.

Exploration Targets to 100m depth- Golden Ant Project

Project	Tonnes		Grade (g/t Au)		Ounces (Gold)	
	Minimum	Maximum	Minimum	Maximum	Minimum	Maximum
Golden Cup	450,000	750,000	3.5	5.5	50,643	132,637
Camel Creek	500,000	1,000,000	2.0	3.5	32,154	112,540
Big Rush	1,800,000	3,600,000	2.0	3.0	115,756	347,267
TOTAL	2,750,000	5,350,000	2.3	3.4	200,000	590,000



A Re-discovered Under-explored Goldfield

- In 2019 the goldfield was secured:
 - Camel Creek, Golden Cup & Big Rush Mines purchased
 - Exploration permit applications made &
 - Joint Venture executed with North X Pty Ltd
- Project covers 695km² across 11 granted Mining Leases, two 100% owned exploration permits and one joint ventured exploration permit.
- Combined previous open pit gold mined in excess of **160,000 ounces at 1.91 g/t Au.**
- Previous gold production via heap leaching
- Third party toll treatment facilities at Thalanga, Charters Towers and Mt Garnet all within potential trucking distance.

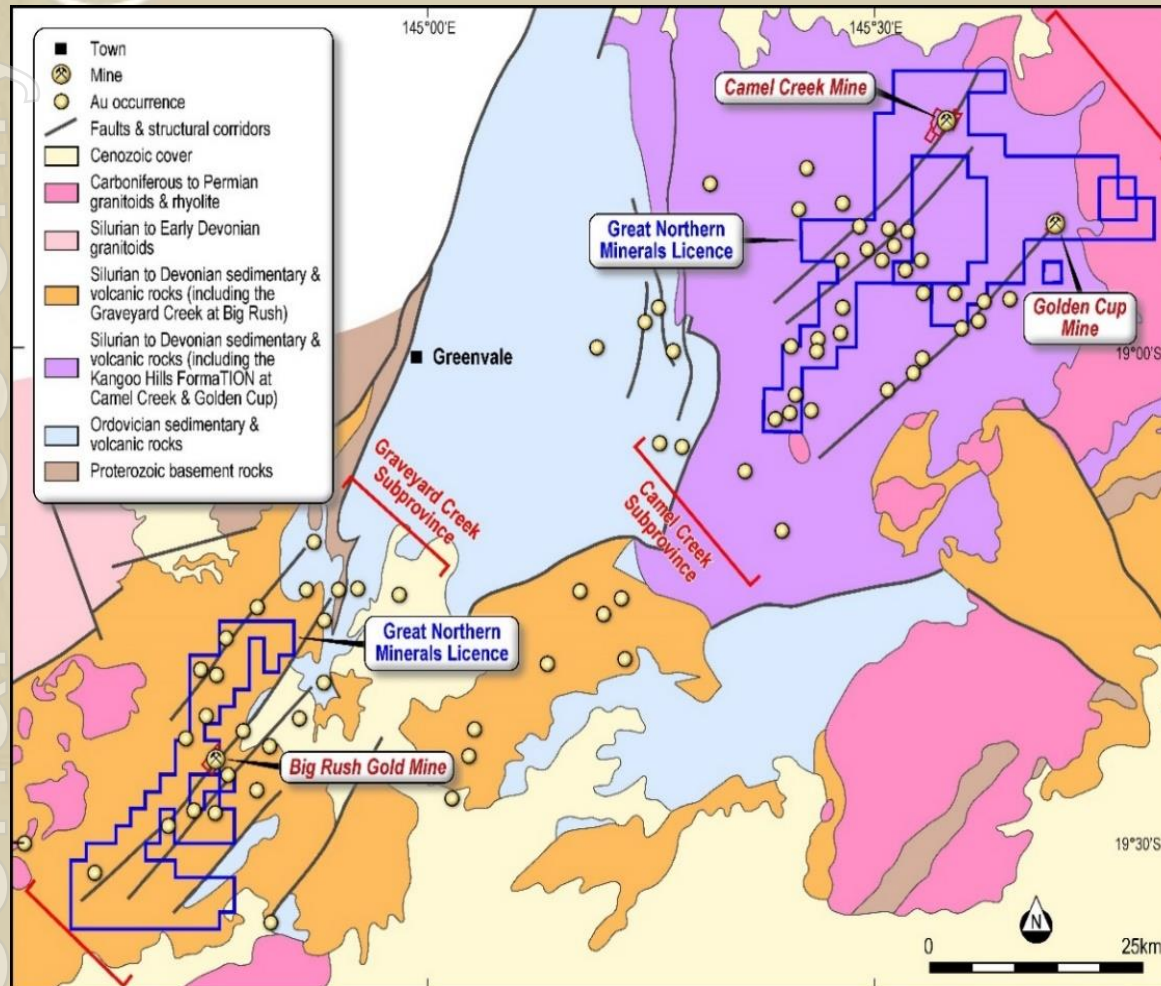
Historic recorded gold production data – Golden Ant Project.

Historic Mine	Ore Mined (tonnes)	Grade (g/t Au)	Ounces Mined
Camel Creek	1,059,696	1.68	57,238
Camel Creek Satellites	188,876	2.29	13,906
Golden Cup	201,081	2.83	18,296
Golden Cup Satellites	94,548	1.92	5,836
Big Rush Heap Leach	950,000	1.9	58,039
Big Rush CIL	33,000	11	10,000
TOTAL	2,494,201	1.91	163,315

Nb. The locations of the satellite deposits are yet to be confirmed.

Broken River Province Geology and Orogenic-style Gold Deposits

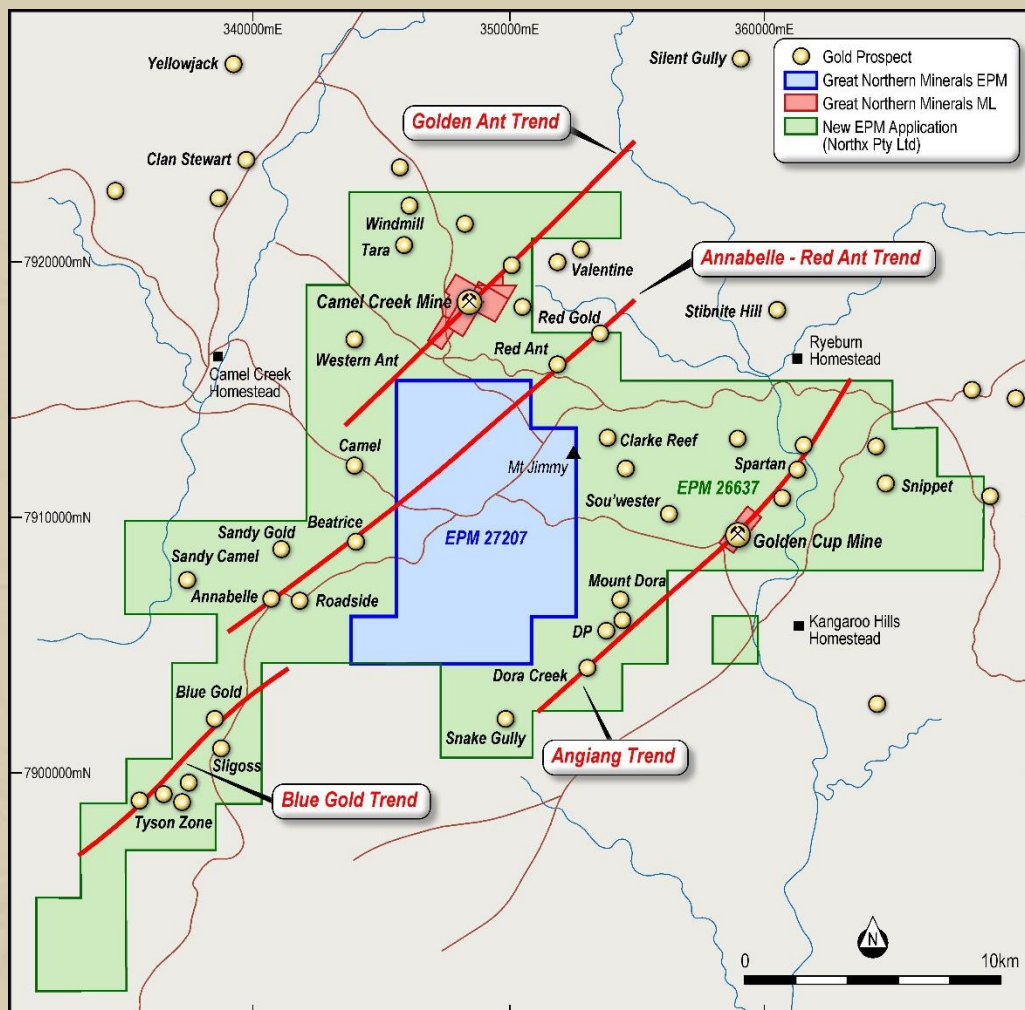
(from: I. M. A. VOS, F. P. BIERLEIN and G. S. TEALE, 2005)



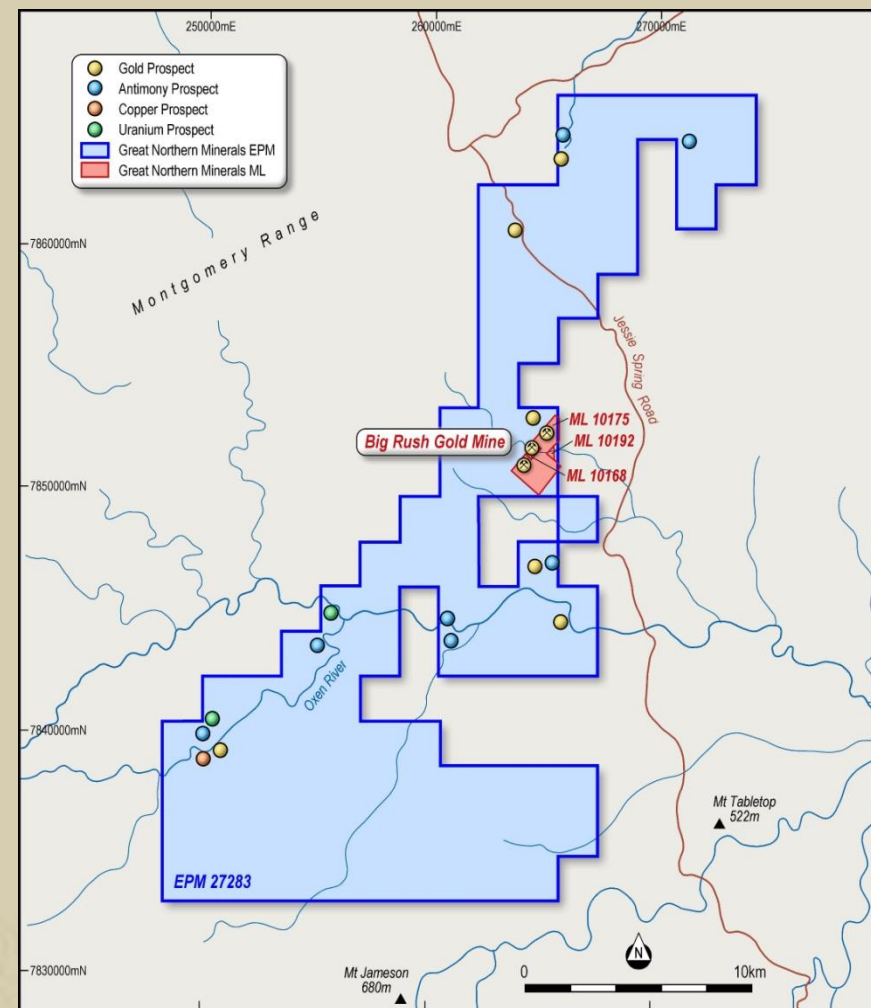
Camel Creek and Golden Cup deposits hosted by sequence of highly deformed interbedded sandstone and variably carbonaceous siltstone and shale of Silurian-Devonian aged rocks. Gold associated with multi-phase quartz veining along NE-trending structural corridors.

Big Rush deposit hosted by Devonian-age rocks. Host rocks comprise highly deformed interbedded sandstone, and variably carbonaceous siltstone and shale, similar to the Camel Creek and Golden Cup host rocks. Gold mineralisation is associated with multi-phase quartz veining along a discrete NE-trending brittle structure that cuts the highly deformed host sediments.

TENURE POSITION: Potential Extensions Secured



Golden Cup & Camel Creek Projects
(325 square kilometres)



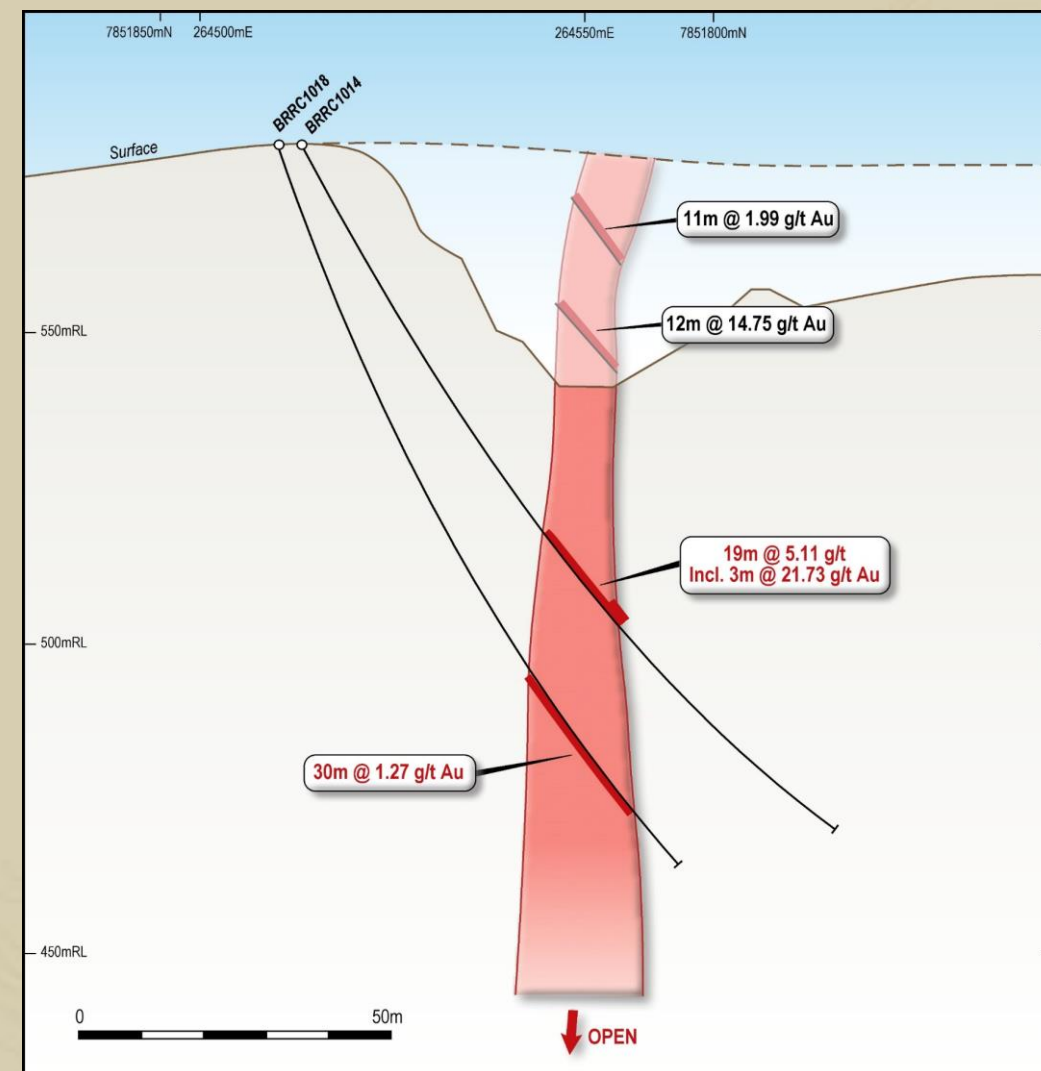
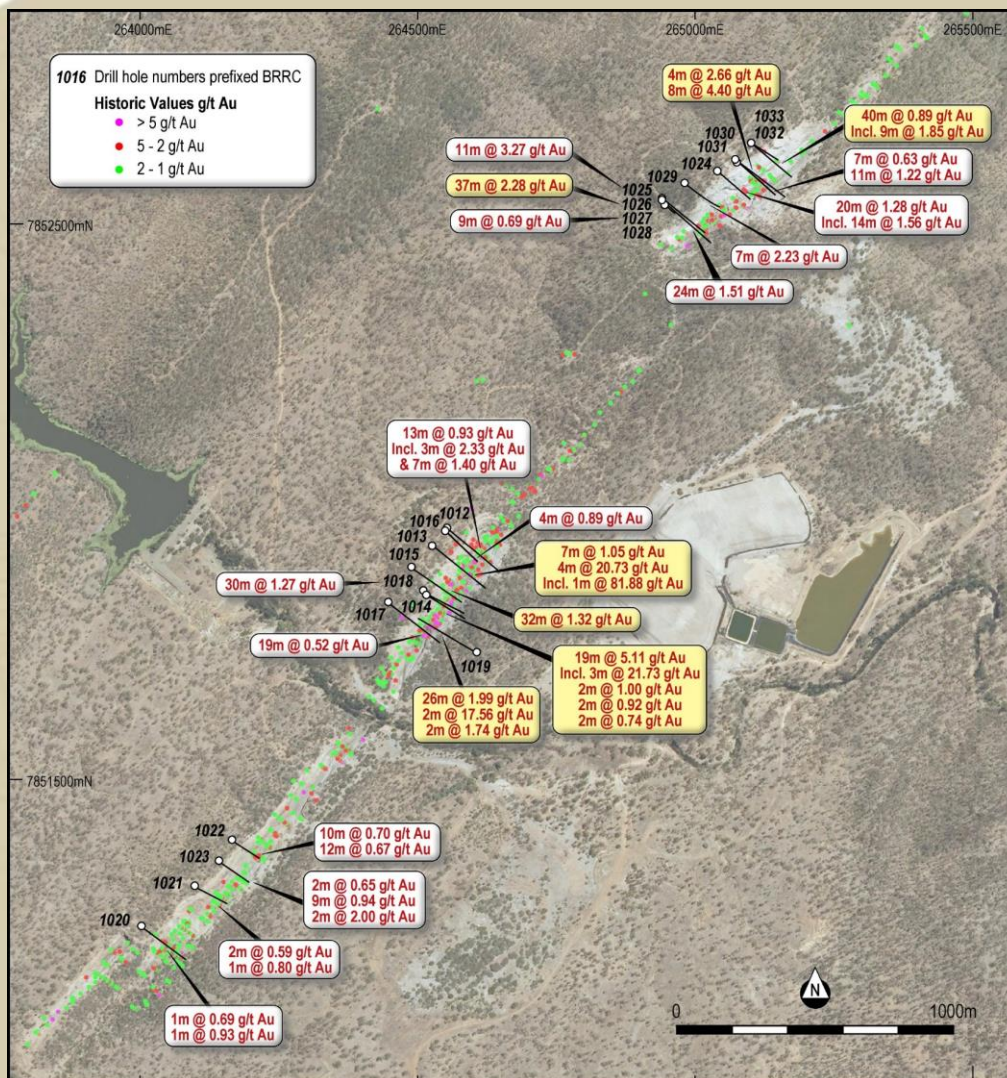
Big Rush Project
(300 square kilometres)



BIG RUSH

- RC Drilling in December 2019 and September 2020 returned high grade gold intercepts beneath the Central and Northern Pit including:
 - **28m @ 2.51 g/t Au from 83m (BRRC1007) &**
 - **24m @ 3.99 g/t Au from 73m (BRRC1009).**
 - **24m @ 3.90 g/t Au, including 8m @ 10.57 g/t Au** from 140 metres (BRRC1013)
 - **32m @ 3.89 g/t Au, including 4m @ 18.97 g/t Au** from 76 metres (BRRC1014)
 - **28m @ 1.71 g/t Au from 148m (BRRC1026)**
- Maiden gold resource of 47,000 ounces announced in February 2020 (558,322 tonnes @ 2.62 g/t Au).
- Historic heap leach operation processed 950,000t @ 1.9g/t Au
- Mining conducted from 1994-1997.
- 4 open pits over a 2.2km strike length.
- The Central, Northern and Southern Pits have been recently drilled with highly encouraging results. To date 1 kilometre out of 2.4 kilometre systematically assessed with excellent potential for the delineation of a substantial gold resource.

Big Rush Aerial Imagery Overview and Recent 2020 Drilling



BIG RUSH: Recent Drill Results

Hole	MGA_East	MGA_North	RL	Dip	Azimuth	Final Depth	From	To	Intersection
BRRC1012	264554	7851951	597	-55	125	179	116	128	16m @ 0.65 g/t Au
BRRC1013	264529	7851920	594	-55	125	179	124	148	24m @ 3.90 g/t Au
BRRC1013							140	148	incl 8m @ 10.57 g/t Au
BRRC1014	264514	7851838	587	-60	125	143	60	92	32m @ 3.89 g/t Au
BRRC1014							76	80	incl 4m @ 18.97 g/t Au
BRRC1015	264490	7851882	582	-60	125	179	132	164	32m @ 1.72 g/t Au
BRRC1016	264506	7851987	576	-65	125	250	240	244	4m @ 0.89 g/t Au
BRRC1017	264447	7851821	557	-65	125	185	144	160	16m @ 0.66 g/t Au
BRRC1017							176	180	4m @ 0.50 g/t Au
BRRC1018	264511	7851841	587	-70	125	160	100	120	20m @ 1.29 g/t Au
BRRC1019	264603	7851731	541	-60	305	180	112	140	28m @ 1.93 g/t Au
BRRC1019							164	168	4m @ 1.45 g/t Au
BRRC1020	264002	7851235	592	-60	125	140			NSR
BRRC1021	264097	7851308	593	-60	120	107	56	60	4m @ 0.62 g/t Au
BRRC1021							72	88	16m @ 0.72 g/t Au
BRRC1022	264165	7851391	573	-60	125	119	60	76	16m @ 0.56 g/t Au
BRRC1023	264141	7851353	580	-60	125	107	52	88	36m @ 0.53 g/t Au
BRRC1024	265044	7852596	636	-60	128	140	108	128	20m @ 1.06 g/t Au
BRRC1025	264944	7852541	592	-60	130	173	132	156	24m @ 1.51 g/t Au
BRRC1026	264941	7852546	594	-70	130	209	148	176	28m @ 1.71 g/t Au
BRRC1027	264947	7852537	593	-50	130	148	92	96	4m @ 0.78 g/t Au

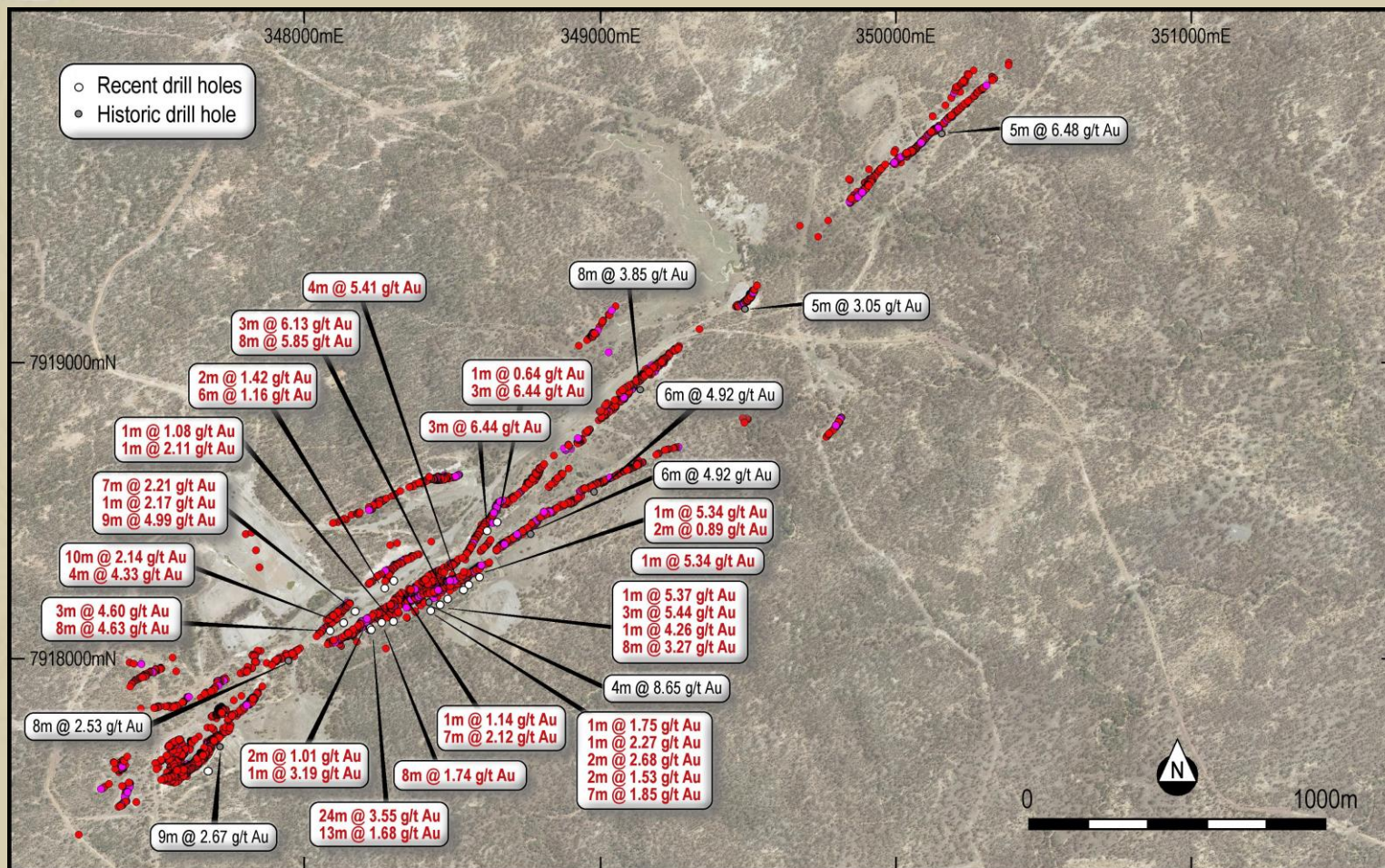
Notes:

Intersections reported at a nominal minimum of 0.5 g/t Au

Max Internal dilution 8 m @ < 0.5 g/t Au



CAMEL CREEK



Camel Creek - All Plus 1 g/t Au Values, GNM drill results and selected historical drill intersections

- Over 1Mt @ 1.7g/t Au processed via heap leaching to produce 57,000 ounces. Ore extracted was oxide and was not crushed prior to being placed on the heap leach pads.
- Camel Creek is the largest gold system controlled by GNM and consists of 3.6 km of continuous workings, comprising about 30 individual pits which vary from 12 to 25m deep.



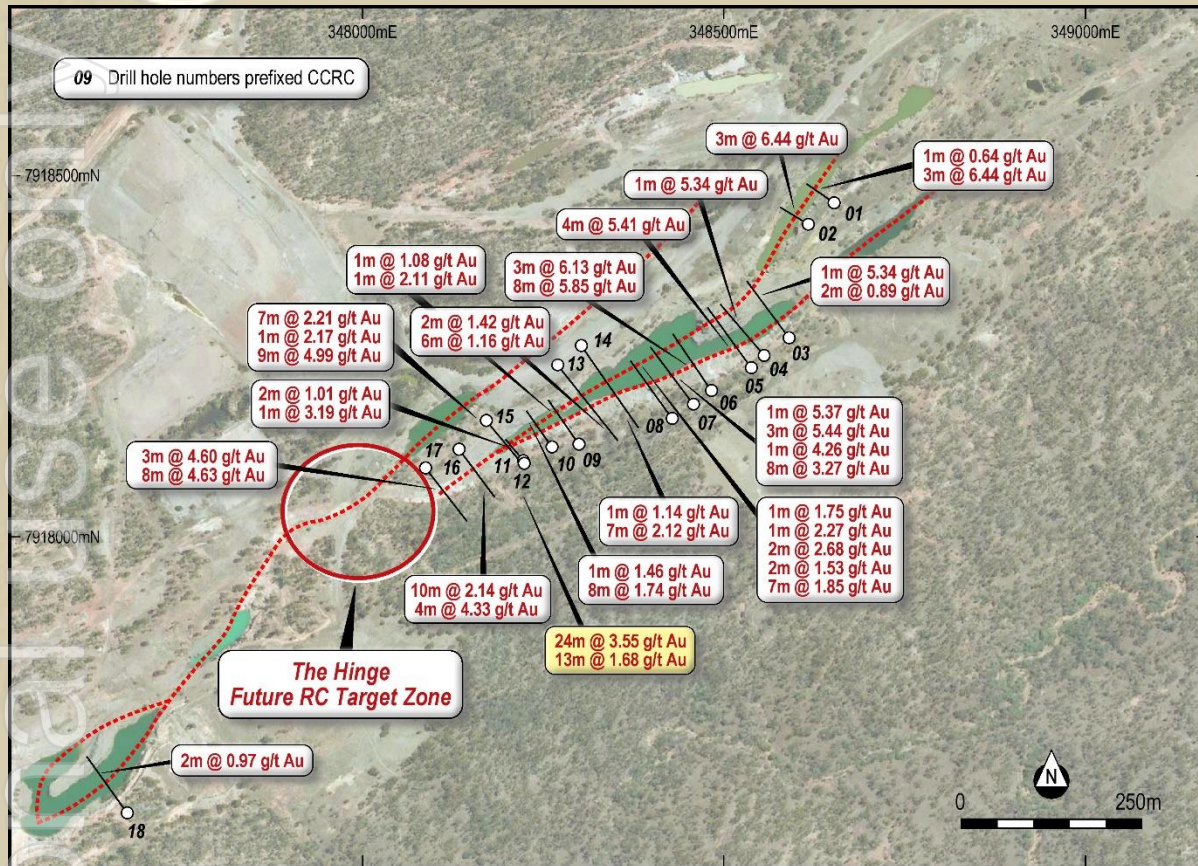
CAMEL CREEK

- Recent deep drilling (August 2020) tested at depth a 700 metre strike length portion of the previous mined area and demonstrated extensions and continuity to all areas tested. Better Results included
 - 52m @ 1.90 g/t Au (CCRC12) including 24m @ 3.26 g/t Au from 56 metres
 - 20m @ 2.26 g/t Au (CCRC17) from 76 metres
 - 12m @ 4.07 g/t Au (CCRC15) from 108 metres
 - 12m @ 2.06 g/t Au (CCRC07) from 144 metres
 - 8m @ 2.10 g/t Au (CCRC05) from 60 metres
 - 8m @ 2.67 g/t Au (CCR06) from 88 metres
 - 8m @ 2.91 g/t Au (CCRC16) from 108 metres
 - 4m @ 4.10 g/t Au (CCR06) from 88 metres

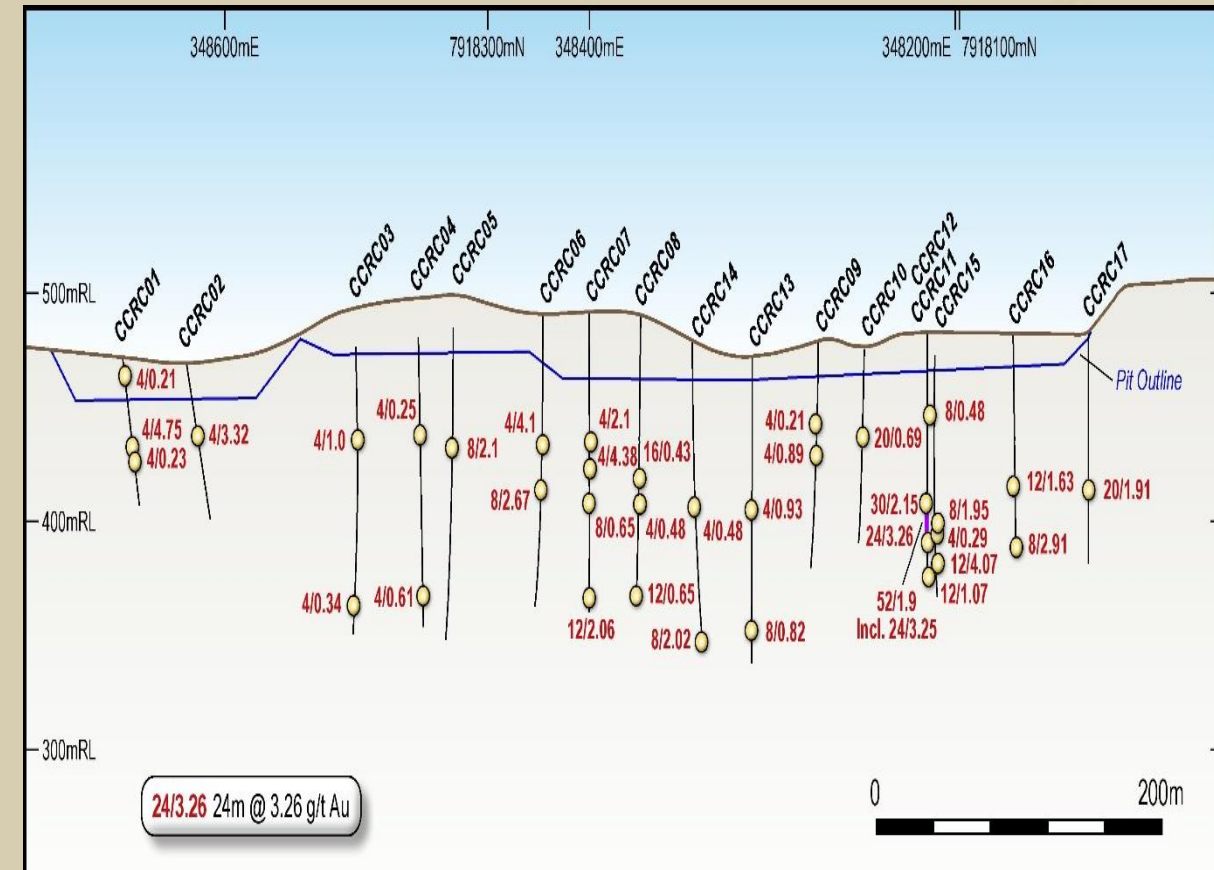


Camel Creek Open Pit

CAMEL CREEK



Camel Creek Plan View, with recent results



Camel Creek Long Section



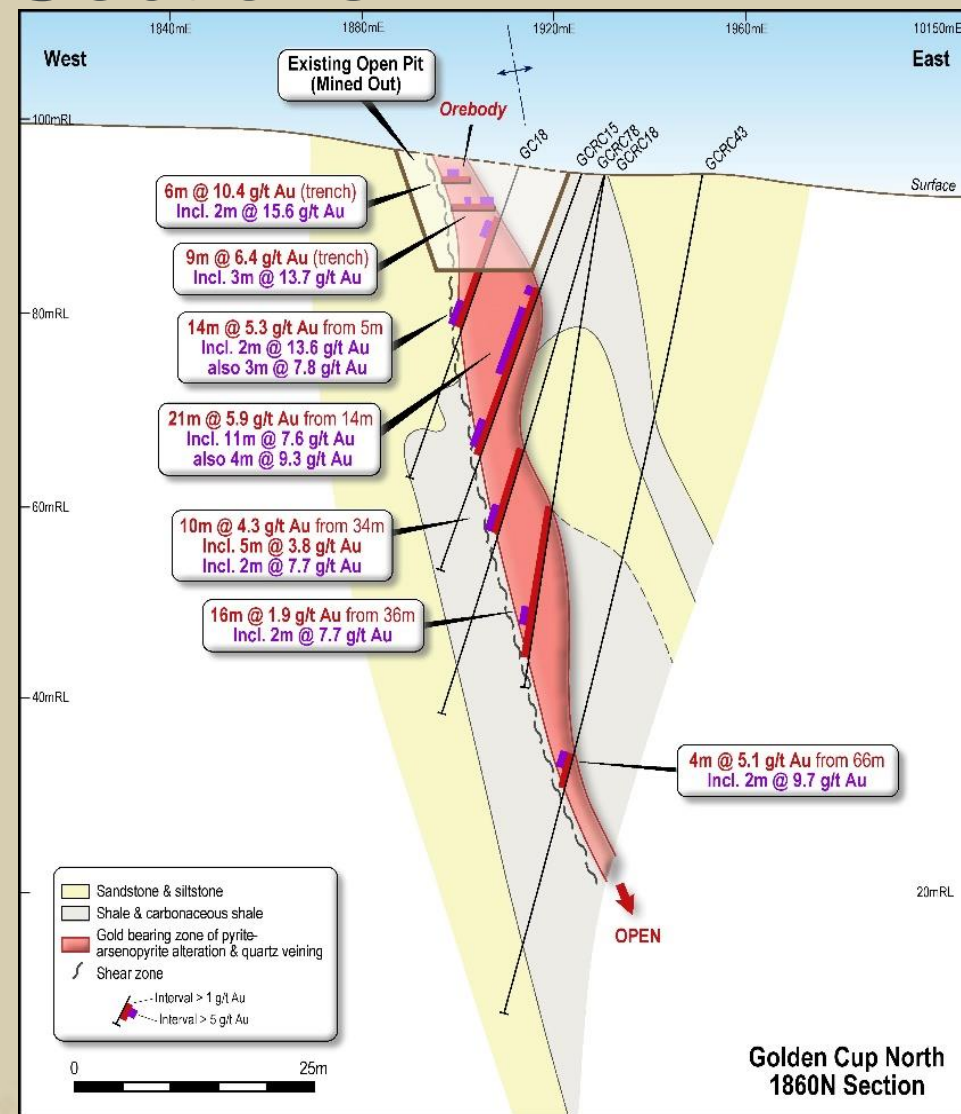
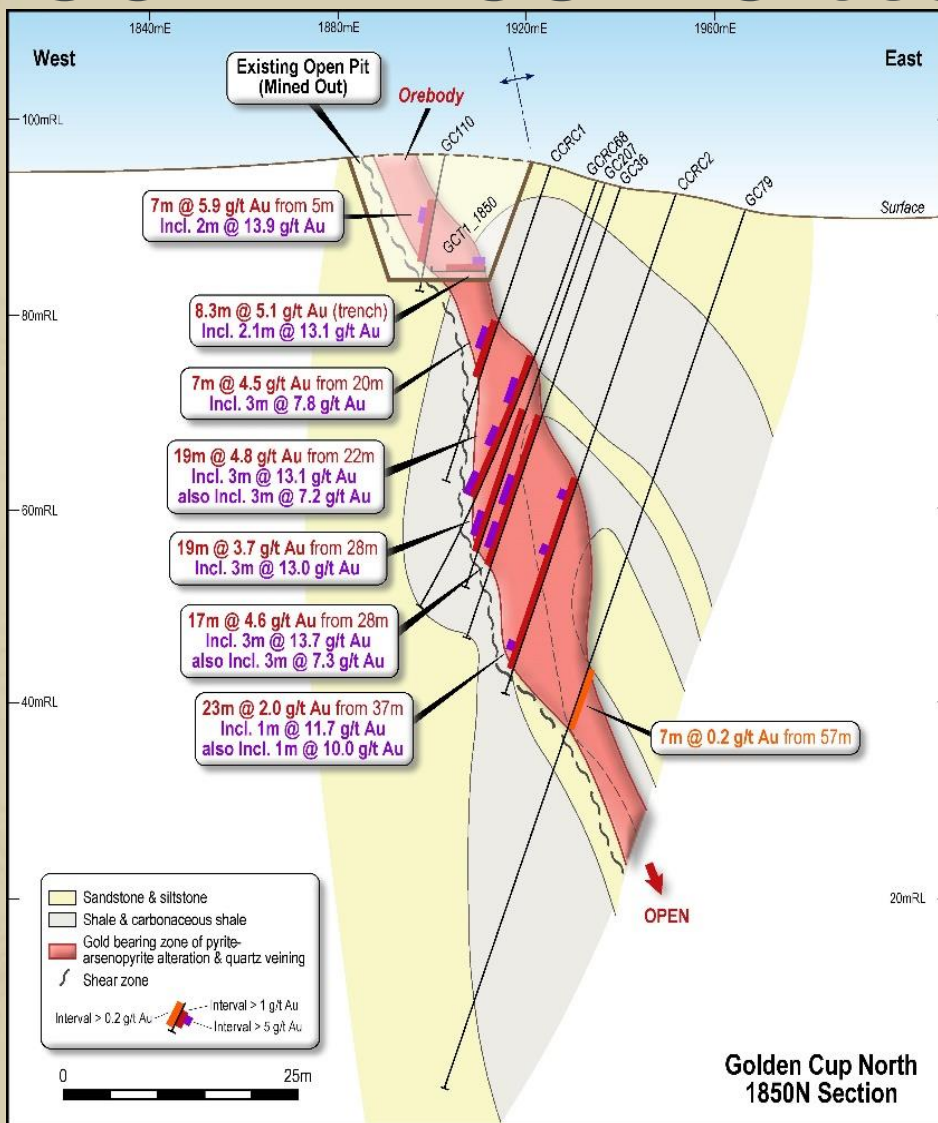
GOLDEN CUP

- RC Drilling in December 2019 returned high grade gold intercepts including:
 - **7m @ 7.49 g/t Au from 32m (GCRC074) &**
 - **9m @ 4.72 g/t Au from 42m (GCRC078).**
- Maiden JORC-compliant gold resource of **30,000 ounces** announced in December 2019 (256,504 tonnes @ 3.60 g/t Au).
- Historically heap leaching processed approximately 200,000t @ 2.8 g/t Au for 18,000 ounces with production finishing in 1993.
- Ore extracted from 9 pits over a 1.5km strike length with an average pit depth of less than 15m.
- 90% of drilling was less than 50m deep and mineralisation remains open at depth and along strike.



Golden Cup Open Pit

GOLDEN CUP: Cross Sections





Executing the strategy

2020

- Appointment of senior executives Kim Robinson and Simon Coxhell
- Completed largest drill program of 9,100 metres across the 3 projects with excellent results
- Paid remaining consideration for 100% ownership of projects (no royalty attached) for a 50% discount
- Further air-core drilling (Camel Creek) scheduled for November 2020

2021

- Updated 2012 JORC estimate scheduled for Q1
- Further RC drilling at all projects
- Scoping Study anticipated Q3



For more information please contact:

Managing Director
Cameron McLean
+61(0)8 6214 0148

Investor Relations
Peter Taylor, NWR Communications
+61 412 036 231