

4 June 2021

MEREENIE DEVELOPMENT WELL WM27 COMMENCES

Central Petroleum Limited (**ASX:CTP**) ("**Central**" or "**Company**") advises that WM27, the first Development well in the Mereenie Development Programme, was spudded on 3rd June 2021 at 2145 hrs.

The rig has moved off the recompletions of the four existing wells (WM14, WM15, WM19 and WM20), and these wells are scheduled to be progressively brought back on-line over the coming days.

WM27 is being drilled at a crestal location targeting increased gas production. This well, along with another development well (WM28) and the four recompletions, is intended to return field production capacity back towards 45 TJ/d (100% JV) and produce at least an additional 40 PJ of gas over the lifetime of the field (10¹ PJ net to Central). This will enable the Mereenie JV to commit to new gas sales into what is anticipated to be an increasingly tight east coast gas market.

Further updates will be provided as the programme progresses.

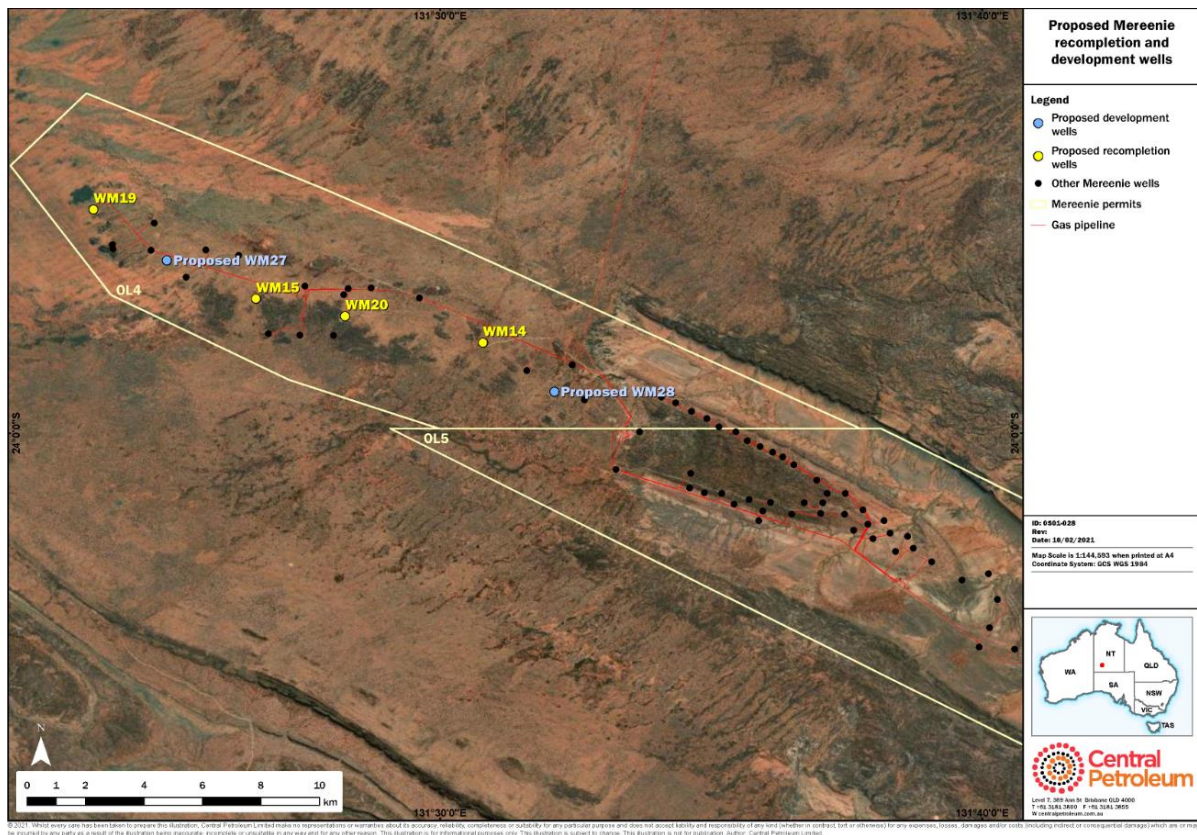


Figure 1: Location of Mereenie recompletion and new development wells

¹ Assumes Central's share of Mereenie JV participating interest of 25% after completion of the recently announced sale of 25% JV participating interest to the NZOG Entities (see Company ASX Announcement dated 25 May 2021).

-ends-

This ASX announcement was approved and authorised for release by Leon Devaney, Managing Director and Chief Executive Officer.

About Central Petroleum

Central Petroleum Limited (Central) is a well-established, and emerging ASX-listed Australian oil and gas producer (ASX: CTP). In our short history, Central has grown to become the largest onshore gas producer in the Northern Territory (NT), supplying industrial customers and senior gas distributors in NT and the wider Australian east coast market.

Central is positioned to become a significant domestic energy supplier, with exploration and development plans across 180,000 km² of tenements in Queensland and the Northern Territory, including some of Australia's largest known onshore conventional gas prospects. Central has also completed an MoU with Australian Gas Infrastructure Group (AGIG) to progress the proposed Amadeus to Moomba Gas Pipeline to a Final Investment Decision.

We are also seeking to develop the Range gas project, a new gas field located among proven CSG fields in the Surat Basin, Queensland with 135 PJ (net to Central) of development-pending 2C contingent resource.

General Legal Disclaimer and Explanation of Terms:

This document is for information purposes only and is not investment or financial product advice nor intended for prospective investors and does not purport to provide all of the information an interested party may require in order to investigate the affairs of Central Petroleum Limited ("Company"). This document has been prepared without taking into account the investment objectives, financial situation or particular needs of any particular person. The data, information, opinions and conclusions ("Information") herein are subject to change without notice.

No representation or warranty, express or implied, is made as to the fairness, accuracy, completeness, correctness, likelihood of achievement or reasonableness of the Information contained in this document. To the maximum extent permitted by law, none of the Company or its agents, directors, officers, employees, advisors and consultants, nor any other person, accepts any liability, including, without limitation, any liability arising out of fault or negligence for any loss arising from the use of the Information contained in this document.

This document may contain forward-looking statements which include (but are not limited to) forecasts, prospects or returns. Forward looking statements are only predictions and are subject to risks, uncertainties and assumptions which may be outside the control of the Company and could cause actual results to differ from these statements. These risks, uncertainties and assumptions include (but are not limited to) funding, exploration, commodity prices, currency fluctuations, economic and financial market conditions, environmental risks, legislative or fiscal developments, political risks, project delay, approvals, cost estimates and other risk factors described from time-to-time in the Company's filings with the ASX. Actual facts, matters or circumstances may be different to those expressed or implied in this document. Given these uncertainties, readers are cautioned not to place reliance on forward looking statements. Subject to any continuing obligations under applicable law and the ASX Listing Rules, the Company and its agents, directors, officers, employees, advisors and consultants, nor any other person, do not undertake any obligation to update or revise any Information or any of the forward looking statements in this document. Sentences and phrases are forward looking statements when they include any tense from present to future or similar inflection words, such as (but not limited to) "believe", "understand", "estimate", "anticipate", "plan", "predict", "target", "may", "hope", "can", "will", "should", "expect", "intend", "projects", "is designed to", "with the intent", "potential", the negative of these words or such other variations thereon or comparable terminology or similar expressions of the future which may indicate a forward looking statement or conditional verbs such as "will", "should", "would", "may", "can" and "could" are generally forward-looking in nature and not historical facts.

No right of the Company or its subsidiaries shall be waived arising out of this document. All rights are reserved.