

# 2021 Share Café Podcast Presentation

Peter AJ van der Made  
Founder and CEO



Unlocking the Future of AI.  
This is our Mission.

# Disclaimer, forward looking statements



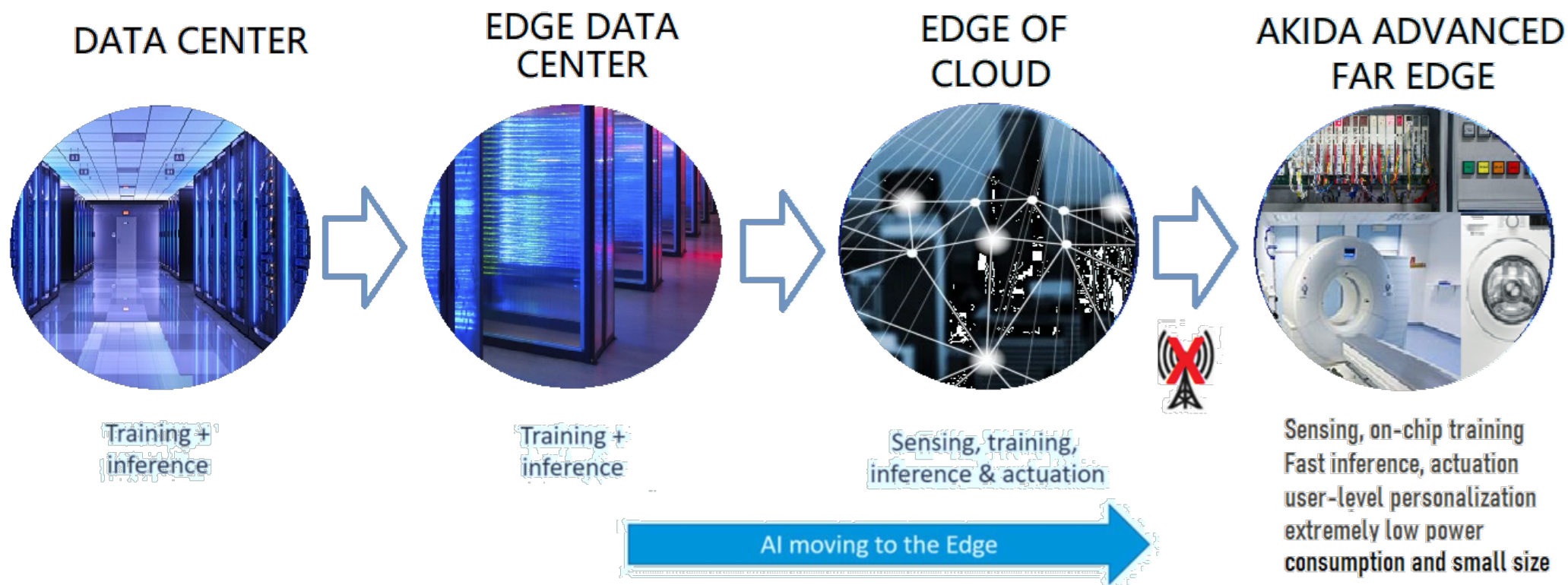
Certain views expressed here contain information derived from third parties or publicly available sources that have not been independently verified. This presentation includes certain statements, projections and estimates of the anticipated future financial performance of BrainChip Holdings Ltd. and the size, growth and nature of future markets for the company's products.

Such statements, projections and estimates reflect various assumptions made by the directors concerning anticipated results, which assumptions may or may not prove to be correct. BrainChip Holdings Ltd. and its subsidiaries have not sought independent verification of information in this presentation.

While the directors believe that they have reasonable grounds for each of the assumptions, statements, projections and estimates and all care has been taken in the preparation of this presentation, no warranty of representation, express or implied is given as to the accuracy, correctness, likelihood of achievement, or reasonableness of assumptions, estimates, statements and projections that are contained in this presentation. Such assumptions, estimates, statements and projections are intrinsically subject to significant uncertainties.

To the maximum extent allowed by law, none of BrainChip Holdings Ltd, its directors, employees nor any other person accepts any liability arising out of any error, negligence or fault for any loss, without limitation, arising from the use of information contained in this presentation.

# AI Moving to the **Edge**



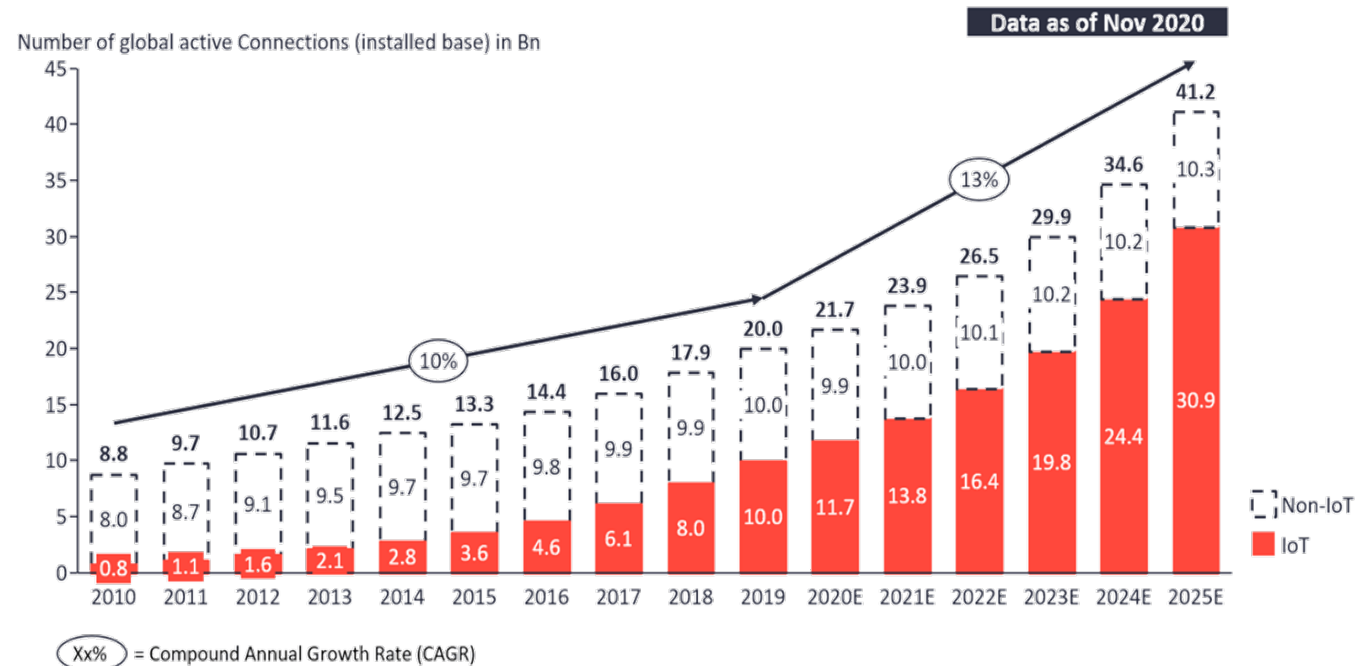
# Edge AI Market Forecasts (3<sup>rd</sup> party)



Insights that empower you to understand IoT markets

## Total number of device connections (incl. Non-IoT)

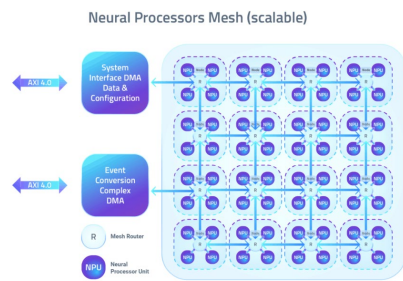
20.0Bn in 2019— expected to grow 13% to 41.2Bn in 2025



Note: Non-IoT includes all mobile phones, tablets, PCs, laptops, and fixed line phones. IoT includes all consumer and B2B devices connected – see IoT break-down for further details

Source(s): IoT Analytics - Cellular IoT & LPWA Connectivity Market Tracker 2010-25

# Akida: Path to Revenue



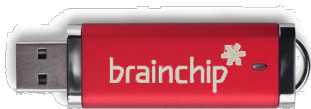
IP



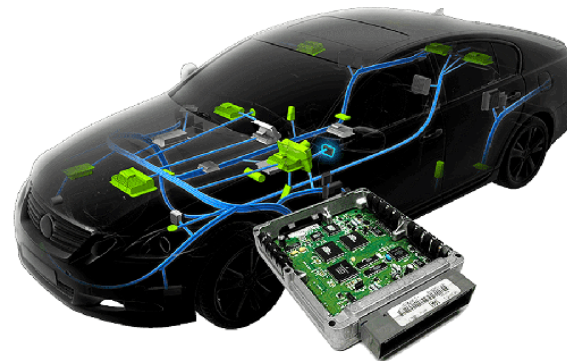
CHIP



MODULES



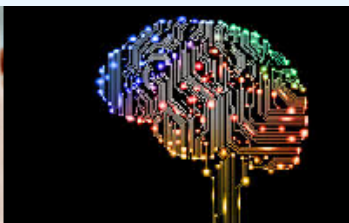
USB



# Competitive Analysis



Micro- to Mw  
Power use



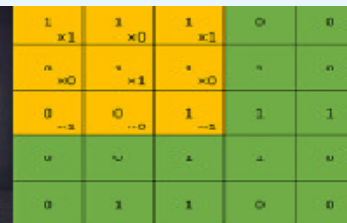
Real-time on-chip  
learning & training



TensorFlow  
Compatible



Stand-alone possible  
(No CPU required)



On-chip  
Convolution

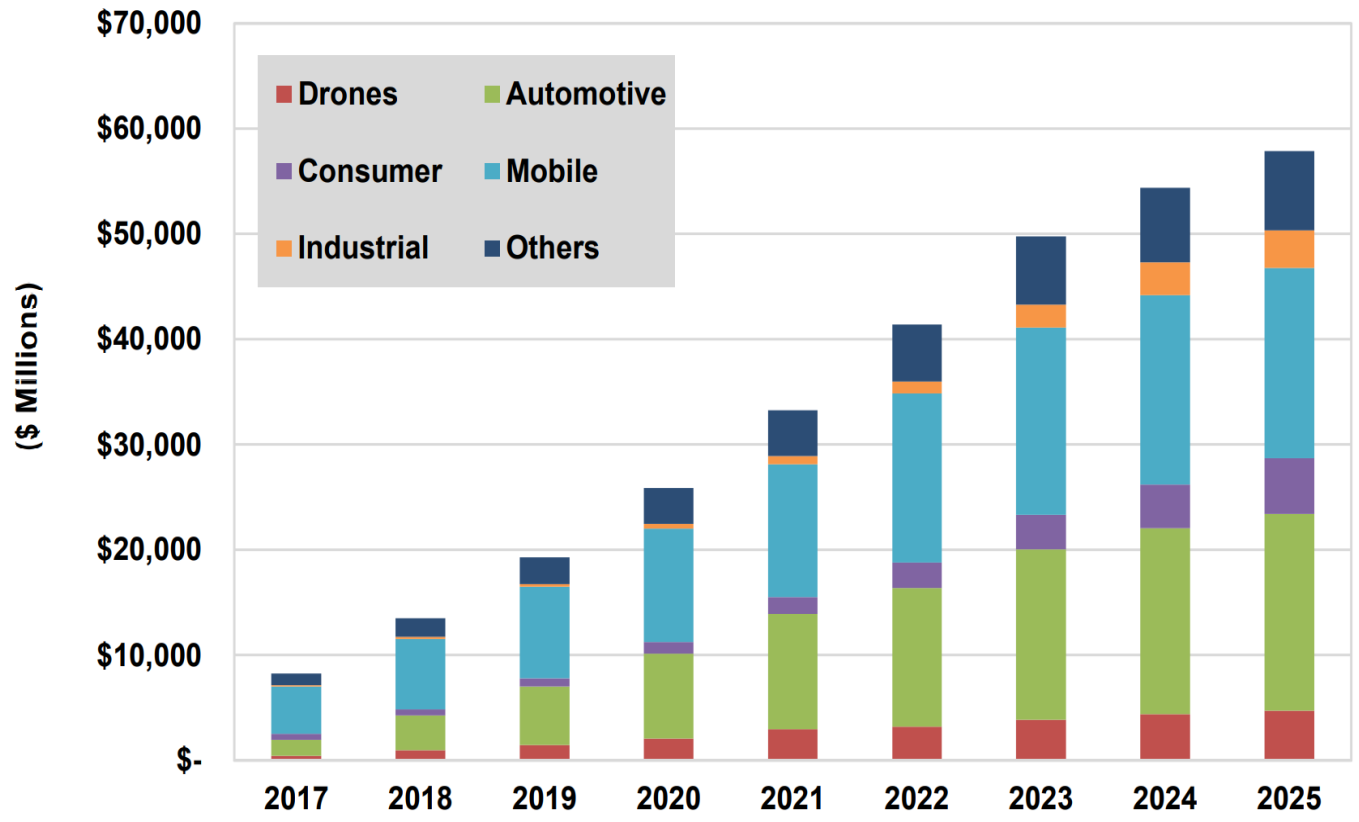
	Micro- to Mw Power use	Real-time on-chip learning & training	TensorFlow Compatible	Stand-alone possible (No CPU required)	On-chip Convolution
BrainChip Akida AKD1000	✓	✓	✓	✓	✓
IBM TrueNorth	✓	NONE	LEARN COREL		
Intel Loihi	✓	PROGRAMMABLE	LEARN NEF		
Google Coral TPU	2-5W	Math chip	✓		
DLAs (Nvidia, others)		Math chip	✓		



# BrainChip Expanding Opportunities



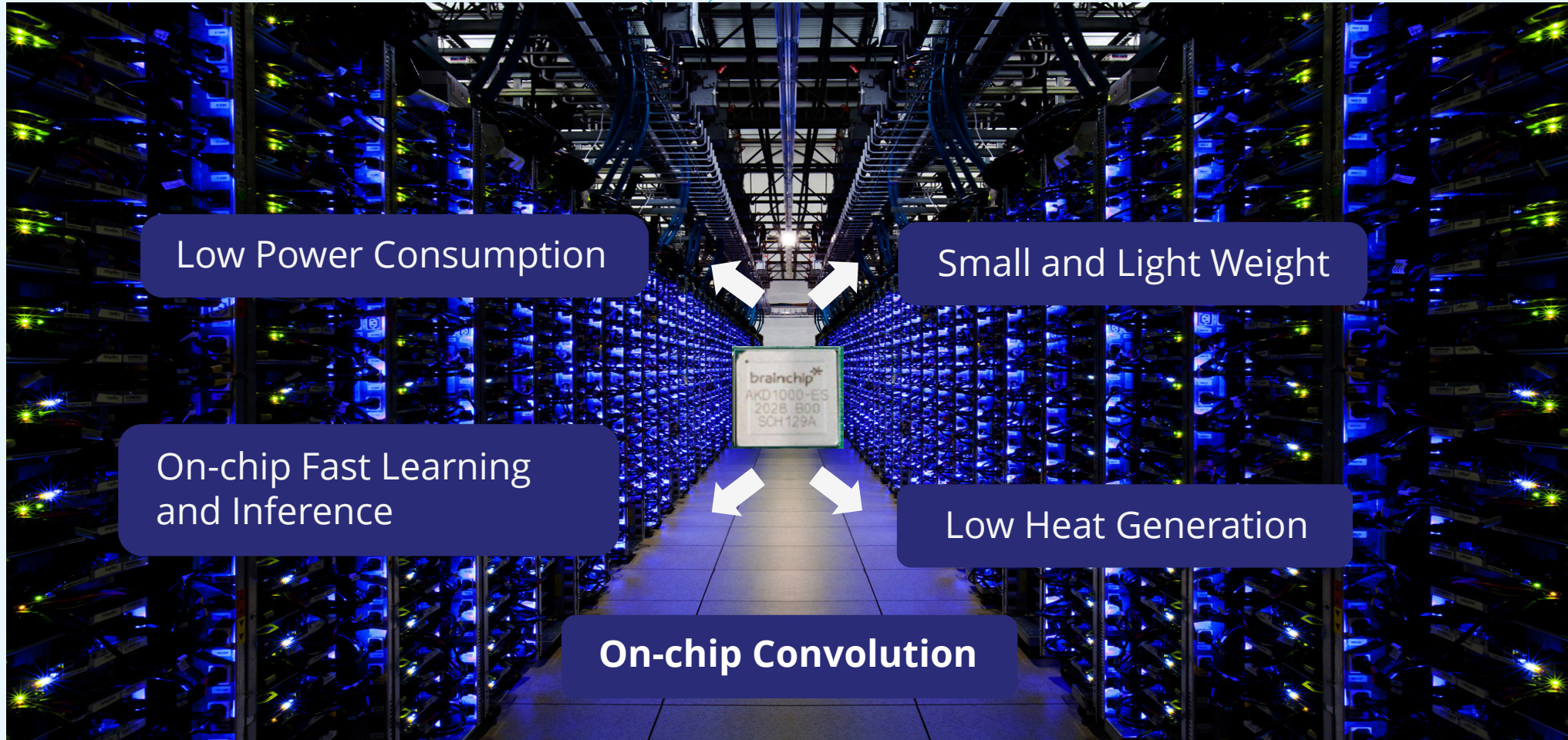
# Edge Based **Devices** requiring AI - \$60B by 2025



(Source: Tractica)



# Key Differentiators

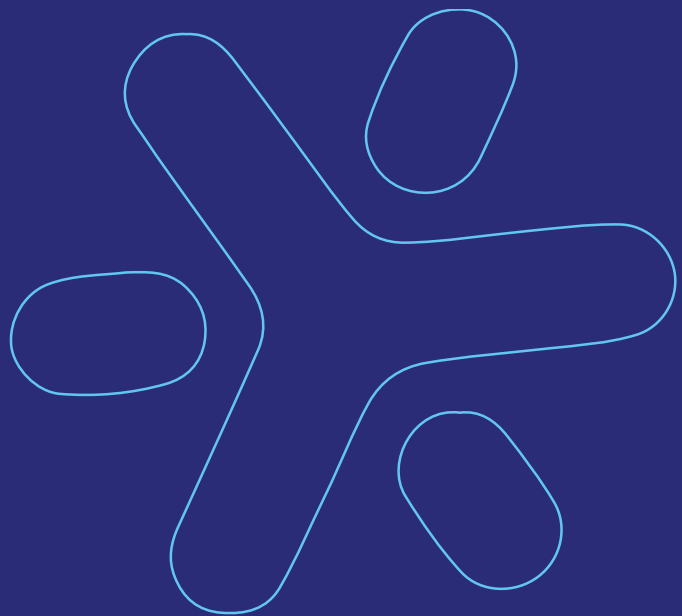


# BrainChip Investor Relations



- ASX 300 Index
- OTCQX Listing
- Search for new CEO is progressing well, reviewing short-list of candidates
- Opening the door for institutional investors
- Appointed new Investor Relations Manager

ersonal use only



**Thank you**

brainchip<sup>™</sup> 