

ASX ANNOUNCEMENT

1 September 2021

RINCON PROJECT 2,000TPA Li_2CO_3 OPERATIONS PROCESS PLANT DESIGN & LAYOUT

HIGHLIGHTS

- ✦ 2,000tpa lithium carbonate process plant development works progressing on schedule
- ✦ Practical completion (99% complete) of plant design & engineering layout works

Argosy Minerals Limited (ASX: **AGY**) ("**Argosy**" or "**Company**") is pleased to advise further progress at the Rincon Lithium Project, located in Salta Province, Argentina, with the process plant design layout established in preparation for constructing the modular 2,000tpa lithium carbonate production operation.

The engineering layout and design phase schedule for the 2,000tpa production operation is now 99% complete.

Construction works on the industrial shed housing the 2,000tpa process plant are due to commence, whilst site works will considerably increase in the coming months. The construction phase remains on schedule for completion by end Q1, 2022, and plant commissioning works, production test-works and ramp-up will follow immediately thereafter.

The Company has been able to acquire early-lead equipment items, whilst confirming orders on longer-lead plant items, and are well in progress for delivery as scheduled.

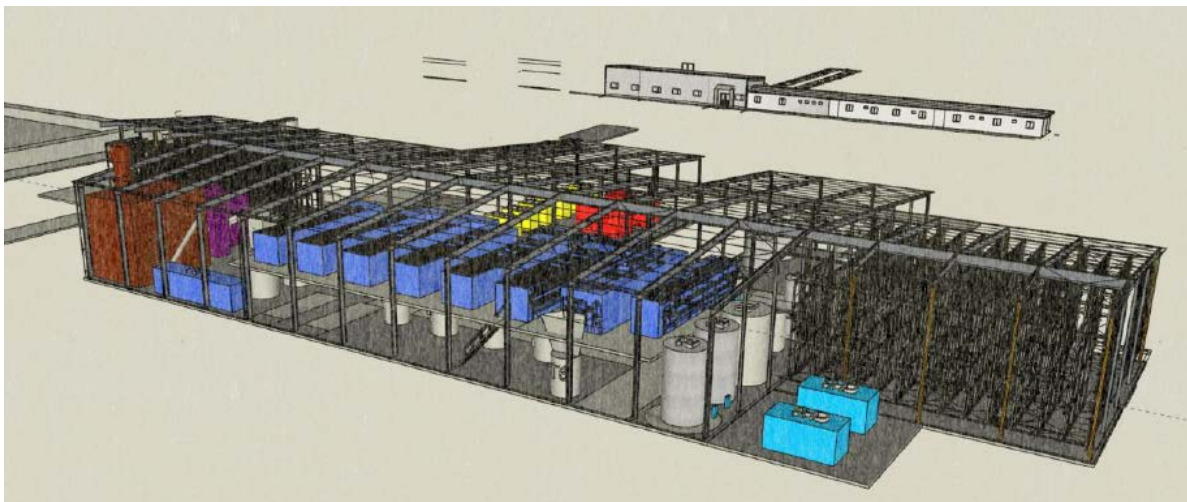


Figure 1. Rincon Lithium Project – 2,000tpa Plant Design & Engineering Layout

Argosy Managing Director, Jerko Zuvela said "*The Company's Puna operations team continue their strong progress toward the 2,000tpa battery quality lithium carbonate production operations start-up.*"

We are excited as we continue works to transform Argosy into a battery quality lithium carbonate producer and cashflow generator, and then to further progress the 10,000tpa

Page 1 of 3



ASX ANNOUNCEMENT

project development expansion. We look forward to a significant near-term growth phase from the increasing development activity at our Rincon Lithium Project."

ENDS

This announcement has been authorised by Jerko Zuvela, the Company's Managing Director

For more information on Argosy Minerals Limited and to subscribe for regular updates, please visit our website at www.argosyminerals.com.au or contact us via admin@argosyminerals.com.au or Twitter @ArgosyMinerals.

For further information:

Jerko Zuvela
Managing Director

T | +61 8 6188 8181

E | admin@argosyminerals.com.au

W | www.argosyminerals.com.au

Forward Looking Statements: Statements regarding plans with respect to the Company's mineral properties are forward looking statements. There can be no assurance that the Company's plans for development of its mineral properties will proceed as expected. There can be no assurance that the Company will be able to confirm the presence of mineral deposits, that any mineralisation will prove to be economic or that a mine will successfully be developed on any of the Company's mineral properties.

Argosy confirms that it is not aware of any new information or data that materially affects the information included in the original market announcement and, in the case of Mineral Resources or Ore Reserves, that all material assumptions and technical parameters underpinning the estimates in the relevant market announcement continue to apply and have not materially changed. Argosy confirms that the form and context in which the Competent Person's findings are presented have not been materially modified from the original market announcement.

ASX Listing Rules Compliance

Argosy advises references to the Company's current target of producing 2,000tpa of high purity battery quality lithium carbonate product at the Rincon Lithium Project should be read subject to and clarified by the Company's current intention that the 2,000tpa production target does not extend beyond a two-year period from the Clarifying Announcement (lodged 10th February 2021, available at www.argosyminerals.com.au and www.asx.com).

At the conclusion of the two-year period, it is the Company's current intention that, subject to feasibility, finance, market conditions and completion of development works at the Rincon Lithium Project, the Company's 10,000tpa production target will apply. The current 2,000tpa production target is intended to form a modular part of the 10,000tpa operation from its commencement.

Argosy further advises that references in this ASX release in relation to the 10,000tpa production target are extracted from the report entitled "Argosy delivers exceptional PEA results for Rincon Project" dated 28 November 2018, available at www.argosyminerals.com.au and www.asx.com. Argosy confirms that it is not aware of any new information or data that materially affects the information included in the Announcement and, in the case of the Production Target, Mineral Resources or Ore Reserves contained in the Announcement, that all material assumptions and technical parameters underpinning the estimates in the PEA announcement continue to apply and have not materially changed. Argosy confirms that the form and context in which the Competent Person's findings are presented have not been materially modified from the PEA announcement.

Reference to Previous ASX Releases:

This document refers to the following previous ASX releases:

28th Nov 2018 - Argosy delivers exceptional PEA results for Rincon Project

11th Jan 2021 - Rincon Project JORC Exploration Target

8th Feb 2021 - \$30M Placement to Fund 2,000tpa Production

10th Feb 2021 - Clarifying Announcement

ASX ANNOUNCEMENT

ABOUT ARGOSY MINERALS LIMITED

Argosy Minerals Limited (ASX: AGY) is an Australian company with a current 77.5% (and ultimate 90%) interest in the Rincon Lithium Project in Salta Province, Argentina and a 100% interest in the Tonopah Lithium Project in Nevada, USA.

The Company is focused on its flagship Rincon Lithium Project – potentially a game-changing proposition given its location within the world renowned “Lithium Triangle” – host to the world’s largest lithium resources, and its fast-track development strategy toward production of LCE product.

Argosy is committed to building a sustainable lithium production company, highly leveraged to the forecast growth in the lithium-ion battery sector.

Appendix 1: AGY’s Argentina Project Location Map

