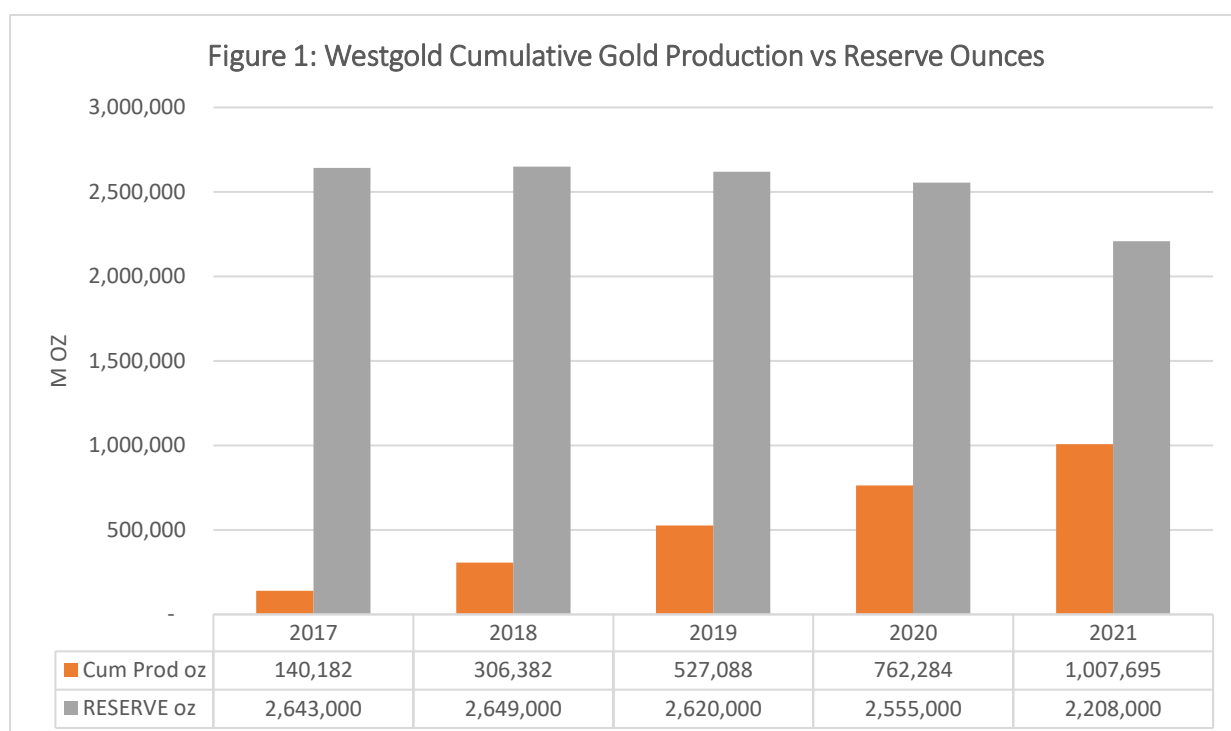


RESOURCES AND RESERVES STATEMENT 2021

Westgold Resources Limited [ASX: WGX - Westgold or the Company] is pleased to announce new estimates of Mineral Resources and Ore Reserves after mining depletion as of 30 June 2021.

Resources and Reserves Estimate	To 30 June 2021
Total Mineral Resources	111Mt at 2.22g/t for 7.9Moz Au
Total Ore Reserves	29Mt at 2.36g/t for 2.2Moz Au

Refer to **Appendix 1** for full detail.



Chief Executive Officer Debbie Fullarton commented:

“Westgold has consolidated an impressive resource base across the Murchison and Bryah regions.

During financial year 2020-21 [FY21] our focus has been on sustaining output from our mining operations over resource development activities. The short-term consequence of this decision resulted in a modest reduction in our overall reported Mineral Resources and Ore Reserves.

In financial year 2021-22 [FY22] our focus returns to growth with a new Exploration and Growth team driving resource to reserve conversion and testing new green and brownfields targets across our 1,300km² of prospective tenure.

Currently nine rigs are active across Westgold sites, with two more arriving at the start of the next quarter to accelerate our FY22 resource development and exploration programme.”



Mineral Resource Overview

Westgold's Mineral Resources are located in two distinct geological Terranes. The Archean Murchison Province and the Proterozoic Bryah Basin. The combined districts boast over 100 individual reported resources, across twelve major mineral fields. These deposits feed three Processing Plants which were opened sequentially commencing with Bluebird in 2015, Fortnum in 2017 and Tuckabianna in 2018.

The total Mineral Resource estimate is **111 Mt @ 2.22 g/t Au for 7.9 Moz Au**. Table 1 below depicts the FY21 Mineral Resource statement for the Murchison and Bryah operations.

Table 1 - FY21 Mineral Resources

Murchison Gold Operations (MGO and CGO) Mineral Resource Statement - Rounded for Reporting 30 June 2021												
Project	Measured			Indicated			Inferred			Total		
	Tonnes ('000s)	Grade	Ounces Au ('000s)	Tonnes ('000s)	Grade	Ounces Au ('000s)	Tonnes ('000s)	Grade	Ounces Au ('000s)	Tonnes ('000s)	Grade	Ounces Au ('000s)
Big Bell	5,565	3.30	591	10,811	2.56	891	4,667	2.57	386	21,043	2.76	1,868
Cuddingwarra	288	1.99	18	1,809	1.81	106	918	1.59	47	3,015	1.76	171
Day Dawn	58	1.73	3	3,501	4.42	497	3,089	2.57	256	6,648	3.54	756
Tuckabianna	212	4.88	33	3,366	2.70	292	5,835	2.33	437	9,414	2.52	762
Tuckabianna Stockpiles	67	3.04	7	3,756	0.71	85	10	0.76	0	3,833	0.75	92
Meekatharra North	0	0.00	0	246	1.57	12	76	2.09	5	322	1.70	18
Nannine	68	2.55	6	1,298	2.16	90	488	2.21	35	1,855	2.19	130
Paddy's Flat	991	4.32	138	10,911	1.72	604	2,505	2.22	179	14,408	1.99	921
Reedy's	425	3.95	54	2,993	2.53	243	8,957	2.44	703	12,375	2.51	1,000
Yaloginda	145	3.42	16	8,439	1.82	494	7,053	1.46	330	15,637	1.67	840
Bluebird Stockpiles	814	1.19	31	0	0.00	0	0	0.00	0	814	1.19	31
Total	8,634	3.23	896	47,131	2.19	3,316	33,598	2.20	2,377	89,363	2.29	6,589

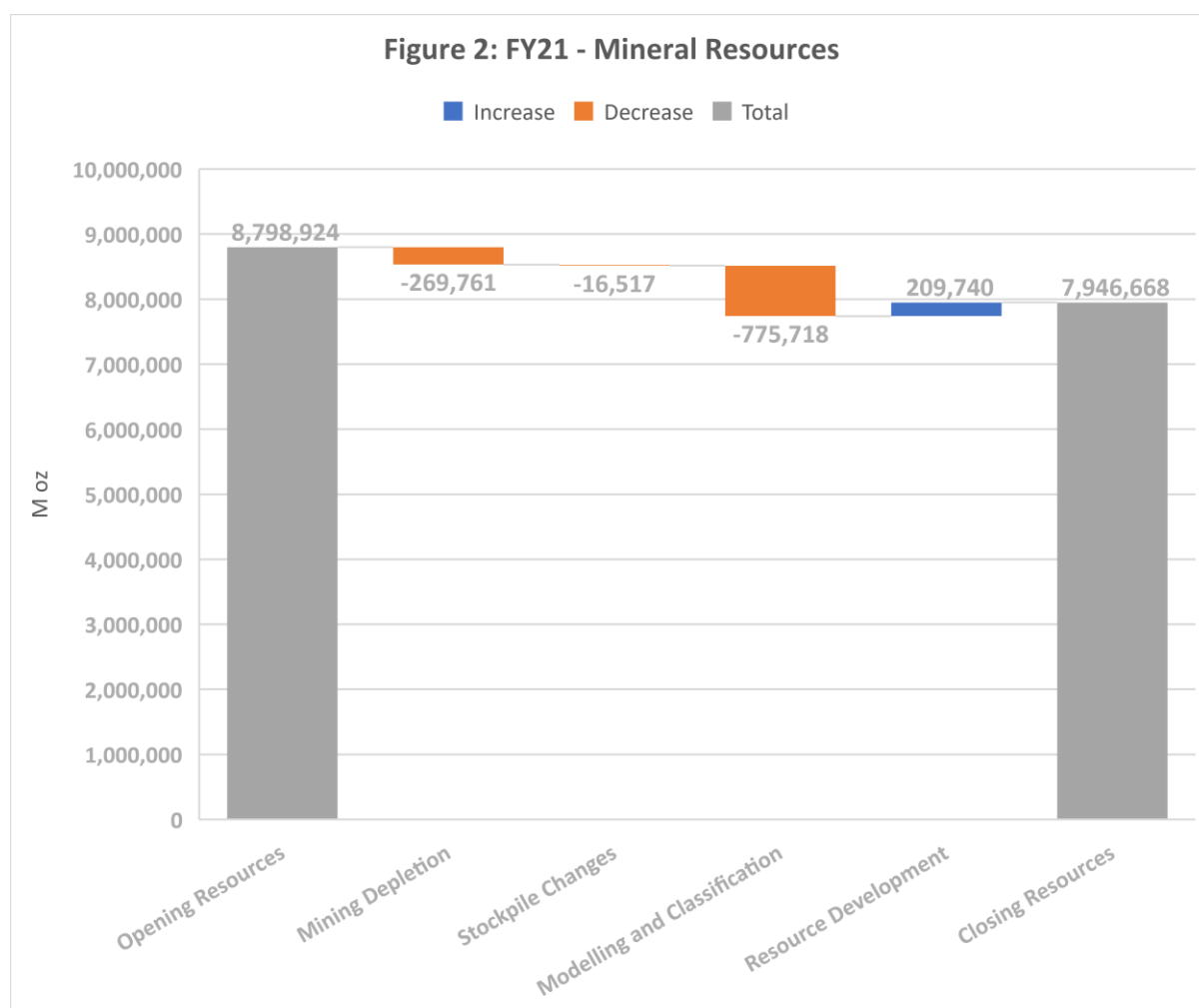
Bryah (Fortnum Gold Operations) Mineral Resource Statement - Rounded for Reporting 30 June 2021												
Project	Measured			Indicated			Inferred			Total		
	Tonnes ('000s)	Grade	Ounces Au ('000s)	Tonnes ('000s)	Grade	Ounces Au ('000s)	Tonnes ('000s)	Grade	Ounces Au ('000s)	Tonnes ('000s)	Grade	Ounces Au ('000s)
Fortnum	1,324	4.12	175	6,110	2.14	421	2,423	1.97	153	9,857	2.37	750
Horseshoe	0	0.00	0	1,266	2.09	85	183	1.43	8	1,449	2.01	93
Peak Hill	0	0.00	0	7,547	1.55	376	1,838	1.78	105	9,385	1.60	481
Stockpiles	284	1.22	11	894	0.73	21	16	0.54	0	1,194	0.85	32
Total	1,608	3.61	186	15,818	1.78	903	4,460	1.86	267	21,886	1.93	1,357



Westgold generates its mineral estimates using a three dimensional solid model (3DM) of the orebody (in Surpac or Leapfrog for WGX generated resources - a mixture of Surpac, Vulcan and Datamine for legacy resources). These models are guided by relevant geological information including mapping, face sample and drilling data. Interpretation is undertaken in a combination of section and plan and 3D space in an attempt to create the most accurate approximation of mineralisation spatial distribution.

Once complete, available sample data (aside from open hole drilling) is intersected with the solids to extract assay composites. From this point appropriate estimation techniques are used to fill a block model using parameters guided by geological understanding and geostatistical review of the constituent data. Mineral Resource estimates are reported using cut-offs approximating a circa \$2,000/oz gold price.

In individual cases this cut-off price may be higher or lower dependent upon the likely mining and processing route envisaged.





The small reduction in estimated Mineral Resources [refer Figure 2] outside of mining depletion was driven by:

- the remodelling and re-estimation of the legacy 1600N / Shocker resource at CGO [located to the south of Big Bell]
- a conservative approach to the potential impacts of pegmatite intrusives in the Big Bell mine sequence at depth, and
- the election to write down the remaining Mickey Doolan resource at MGO following completion of the open pit and with a view to its lower metallurgical recovery.

Additional detailed information relating to generation of the Resource estimates is attached in **Appendix 1** Table 1 – JORC 2012 Reporting Criteria.

Ore Reserve Overview

The total Mineral Reserve estimate is **29 Mt @ 2.36 g/t Au for 2.2 Moz Au**. Table 2 below depicts the FY21 Ore Reserves statement for the Murchison and Bryah Operations.

Table 2 - FY21 Ore Reserve

Murchison Gold Operations (MGO and CGO) Ore Reserve Statement - Rounded for Reporting 30 June 2021									
Project	Proven			Probable			Total		
	Tonnes ('000s)	Grade	Ounces Au ('000s)	Tonnes ('000s)	Grade	Ounces Au ('000s)	Tonnes ('000s)	Grade	Ounces Au ('000s)
Big Bell	4,874	2.95	462	5,005	2.64	425	9,879	2.79	887
Cuddingwarra	0	0.00	0	1,074	1.71	59	1,074	1.71	59
Day Dawn	0	0.00	0	1,398	6.55	294	1,398	6.55	294
Tuckabianna	29	3.13	3	860	2.36	65	889	2.39	68
Tuckabianna Stockpiles	67	3.04	7	3,756	0.71	85	3,823	0.75	92
Meekatharra North	0	0.00	0	169	1.12	6	169	1.12	6
Nannine	0	0.00	0	1,074	1.49	51	1,074	1.49	51
Paddy's Flat	222	4.71	34	868	3.37	94	1,090	3.64	128
Reedy's	77	4.25	10	845	3.07	84	922	3.17	94
Yaloginda	65	3.33	7	1,000	3.14	101	1,065	3.15	108
Bluebird Stockpiles	1,029	1.23	41	0	0.00	0	1,029	1.23	41
Total	6,363	2.75	563	16,050	2.45	1,265	22,413	2.54	1,828

Bryah (Fortnum Gold Operations) Ore Reserve Statement - Rounded for Reporting 30 June 2021									
Project	Proven			Probable			Total		
	Tonnes ('000s)	Grade	Ounces Au ('000s)	Tonnes ('000s)	Grade	Ounces Au ('000s)	Tonnes ('000s)	Grade	Ounces Au ('000s)
Fortnum	320	4.31	44	3,252	1.79	188	3,572	2.02	232
Horseshoe	0	0.00	0	761	1.84	45	761	1.84	45
Peak Hill	0	0.00	0	1,122	1.95	70	1,122	1.95	70
Stockpiles	284	1.22	11	894	0.73	21	1,178	0.85	32
Total	603	2.86	55	6,029	1.67	324	6,633	1.78	379



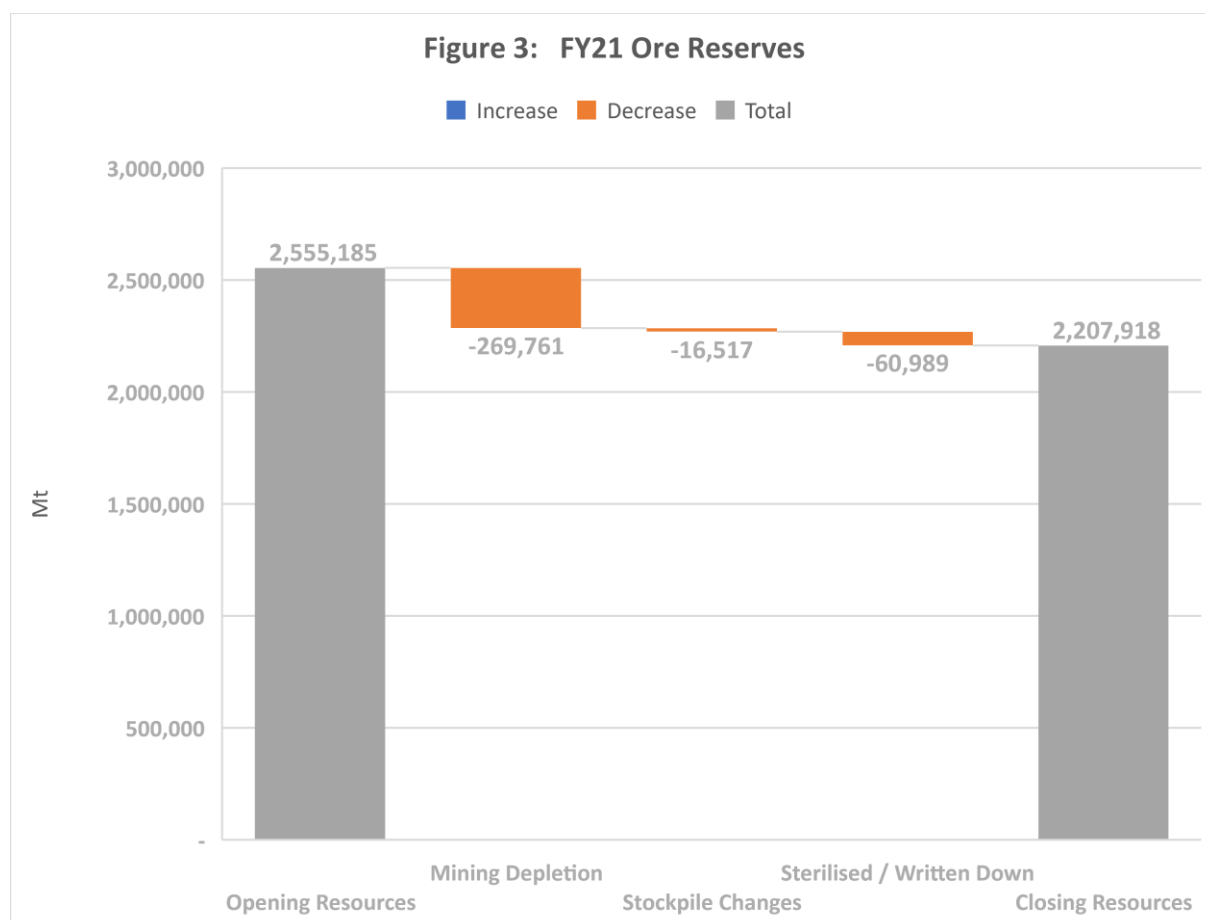
Ore Reserves are a subset of Measured and Indicated Resources only. All current pit and underground operations were depleted to 30 June 2021.

All Ore Reserves have been generated from design studies using appropriate cost, geotechnical, slope angle, stope span, dilution, cut-off grade and mining and metallurgical recovery parameters specific to each mine. A maximum A\$2,000/oz gold price has been used to estimate Ore Reserves and determine appropriate cut-offs.

Mining, milling and additional overhead costs are based on currently contracted and budgeted operating costs. Mill recoveries for all ore types are based upon operating experience or metallurgical test work. Stockpiles consist of ROM stocks and low-grade stocks mined by Westgold and accumulated by previous owners.

The reduction in Ore Reserves outside of mining depletion [Figure 3] was driven by:

- resource model updates in components of the Paddy's Flat and Starlight Underground deposits,
- refinements in resource estimation for the Big Bell South pit campaign; and
- a conservative approach in regard to the pegmatite intrusions within the mining envelope at Big Bell Underground Mine.





Additional detailed information relating to generation of the Ore Reserves is attached in **Appendix 1** Table 1 – JORC 2012 Reporting Criteria.

ENDS

THIS ANNOUNCEMENT IS AUTHORISED FOR RELEASE TO THE ASX BY LISA SMITH, COMPANY SECRETARY.

Investor Relations Enquiries:

Wayne Bramwell | Executive Director

+61 8 9462 3400

wayne.bramwell@westgold.com.au

www.westgold.com.au

COMPETENT PERSON STATEMENTS

Mineral Resources Estimates

The information in this report that relates to Mineral Resource Estimates is compiled by Westgold technical employees and contractors under the supervision of Mr. Jake Russell B.Sc. (Hons), who is a member of the Australian Institute of Geoscientists. Mr Russell is a full-time employee of the company, and has sufficient experience which is relevant to the styles of mineralisation and types of deposit under consideration and to the activities which he is undertaking to qualify as a Competent Person as defined in the 2012 Edition of the Australasian Code for Reporting of Exploration Results, Mineral Resources and Ore Reserves. Mr Russell consents to the inclusion in this report of the matters based on his information in the form and context in which it appears. Mr Russell is eligible to participate in short and long term incentive plans of the company.

Ore Reserve Estimates

The information in this report that relates to Ore Reserve Estimates is based on information compiled by Mr. Anthony Buckingham B.Eng. (Mining Engineering) MAusIMM. Mr. Buckingham has sufficient experience which is relevant to the styles of mineralisation and types of deposit under consideration and to the activities which they are undertaking to qualify as a Competent Person as defined in the 2012 Editions of the “Australasian Code for Reporting of Exploration Results, Mineral Resources and Ore Reserves (JORC 2012)”. Mr. Buckingham consents to the inclusion in this report of the matters based on his information in the form and context in which it appears. Mr. Buckingham is a full-time senior executive of the Company and is eligible to and may participate in short-term and long-term incentive plans of the Company as disclosed in its annual reports and disclosure documents.

FORWARD LOOKING STATEMENTS

Certain statements in this report relate to the future, including forward looking statements relating to Westgold’s financial position and strategy. These forward-looking statements involve known and unknown risks, uncertainties, assumptions and other important factors that could cause the actual results, performance or achievements of Westgold to be materially different from future results, performance or achievements expressed or implied by such statements. Actual events or results may differ materially from the events or results expressed or implied in any forward-looking statement and deviations are both normal and to be expected. Other than required by law, neither Westgold, their officers nor any other person gives any representation, assurance or guarantee that the occurrence of the events expressed or implied in any forward-looking statements will actually occur. You are cautioned not to place undue reliance on those statements.



APPENDIX 1 - JORC 2012 TABLE 1 – GOLD DIVISION

SECTION 1 SAMPLING TECHNIQUES AND DATA

(Criteria in this section apply to all succeeding sections.)

Criteria	JORC Code Explanation	Commentary
Sampling techniques	<ul style="list-style-type: none"> Nature and quality of sampling (e.g., cut channels, random chips, or specific specialised industry standard measurement tools appropriate to the minerals under investigation, such as down hole gamma sondes, or handheld XRF instruments, etc.). These examples should not be taken as limiting the broad meaning of sampling. Include reference to measures taken to ensure sample representivity and the appropriate calibration of any measurement tools or systems used. Aspects of the determination of mineralisation that are Material to the Public Report. In cases where 'industry standard' work has been done this would be relatively simple (e.g., 'reverse circulation drilling was used to obtain 1 m samples from which 3 kg was pulverised to produce a 30 g charge for fire assay'). In other cases, more explanation may be required, such as where there is coarse gold that has inherent sampling problems. Unusual commodities or mineralisation types (e.g., submarine nodules) may warrant disclosure of detailed information. 	<ul style="list-style-type: none"> Diamond Drilling A significant portion of the data used in resource calculations has been gathered from diamond core. Multiple sizes have been used historically. This core is geologically logged and subsequently halved for sampling. Grade control holes may be whole-cored to streamline the core handling process if required. Face Sampling At each of the major past and current underground producers, each development face / round is horizontally chip sampled. The sampling intervals are dominated by geological constraints (e.g. rock type, veining and alteration / sulphidation etc.). The majority of exposures within the orebody are sampled. Sludge Drilling Sludge drilling at is performed with an underground production drill rig. It is an open hole drilling method using water as the flushing medium, with a 64mm (nominal) hole diameter. Sample intervals are ostensibly the length of the drill steel. Holes are drilled at sufficient angles to allow flushing of the hole with water following each interval to prevent contamination. Sludge drilling is not used to inform resource models. RC Drilling Drill cuttings are extracted from the RC return via cyclone. The underflow from each interval is transferred via bucket to a four-tiered riffle splitter, delivering approximately three kilograms of the recovered material into calico bags for analysis. The residual material is retained on the ground near the hole. Composite samples are obtained from the residue material for initial analysis, with the split samples remaining with the individual residual piles until required for re-split analysis or eventual disposal. RAB / Aircore Drilling Combined scoops from bucket dumps from cyclone for composite. Split samples taken from individual bucket dumps via scoop. RAB holes are not included in the resource estimate. Blast Hole Drilling Cuttings sampled via splitter tray per individual drill rod. Blast holes not included in the resource estimate. All geology input is logged and validated by the relevant area geologists, incorporated into this is an assessment of sample recovery. No defined relationship exists between sample recovery and grade. Nor has sample bias due to preferential loss or gain of fine or coarse material been noted.
Drilling techniques	<ul style="list-style-type: none"> Drill type (e.g., core, reverse circulation, open-hole hammer, rotary air blast, auger, Bangka, sonic, etc.) and details (e.g., core diameter, triple or standard tube, depth of diamond tails, face-sampling bit, or other type, whether core is oriented and if so, by what method, etc.). 	
Drill sample recovery	<ul style="list-style-type: none"> Method of recording and assessing core and chip sample recoveries and results assessed. Measures taken to maximise sample recovery and ensure representative nature of the samples. Whether a relationship exists between sample recovery and grade and whether sample bias may have occurred due to preferential loss/gain of fine/coarse material. 	



Criteria	JORC Code Explanation	Commentary
Logging	<ul style="list-style-type: none"> Whether core and chip samples have been geologically and geotechnically logged to a level of detail to support appropriate Mineral Resource estimation, mining studies and metallurgical studies. Whether logging is qualitative or quantitative in nature. Core (or costean, channel, etc.) photography. The total length and percentage of the relevant intersections logged 	<ul style="list-style-type: none"> Westgold surface diamond holes are all orientated and all holes have been logged in detail for geology, veining, alteration, mineralisation and orientated structure (where possible). Westgold underground drill-holes are logged in detail for geology, veining, alteration, mineralisation and structure. Core has been logged in enough detail to allow for the relevant mineral resource estimation techniques to be employed. Core is photographed both wet and dry. All photos are stored on the Company's servers. Development faces are mapped geologically and photographed. RC, RAB and Aircore chips are geologically logged. Sludge drilling is logged for lithology, mineralisation and vein percentage. Logging is qualitative in nature. All holes are logged completely, all faces are mapped completely.
Sub-sampling techniques and sample preparation	<ul style="list-style-type: none"> If core, whether cut or sawn and whether quarter, half or all core taken. If non-core, whether riffled, tube sampled, rotary split, etc. and whether sampled wet or dry. For all sample types, the nature, quality and appropriateness of the sample preparation technique. Quality control procedures adopted for all sub-sampling stages to maximise representivity of samples. Measures taken to ensure that the sampling is representative of the in situ material collected, including for instance results for field duplicate/second-half sampling. Whether sample sizes are appropriate to the grain size of the material being sampled. 	<ul style="list-style-type: none"> Blast holes -Sampled via splitter tray per individual drill rods. RAB / AC chips - Combined scoops from bucket dumps from cyclone for composite. Split samples taken from individual bucket dumps via scoop. RC - Three tier riffle splitter (approximately 5kg sample). Samples generally dry. Face Chips - Nominally chipped horizontally across the face from left to right, sub-set via geological features as appropriate. Diamond Drilling - Half-core niche samples, sub-set via geological features as appropriate. Grade control holes may be whole-cored to streamline the core handling process if required. Chips / core chips undergo total preparation. Samples undergo fine pulverisation of the entire sample by an LM5 type mill to achieve a 75µ product prior to splitting. QA/QC is currently ensured during the sub-sampling process via the use of the systems of an independent NATA / ISO accredited laboratory contractor. A significant portion of the historical informing data has been processed by in-house laboratories. The sample size is considered appropriate for the grain size of the material being sampled. The un-sampled half of diamond core is retained for check sampling if required. For RC chips regular field duplicates are collected and analysed for significant variance to primary results.
Quality of assay data and laboratory tests	<ul style="list-style-type: none"> The nature, quality and appropriateness of the assaying and laboratory procedures used and whether the technique is considered partial or total. For geophysical tools, spectrometers, handheld XRF instruments, etc., the parameters used in determining the analysis including instrument make and model, reading times, calibrations factors applied and their derivation, etc. Nature of quality control procedures adopted (e.g. standards, blanks, duplicates, external laboratory checks) and whether acceptable levels of accuracy (i.e. lack of bias) and precision have been established. 	<ul style="list-style-type: none"> Recent drilling was analysed by fire assay as outlined below; <ul style="list-style-type: none"> A 40g sample undergoes fire assay lead collection followed by flame atomic adsorption spectrometry. The laboratory includes a minimum of 1 project standard with every 22 samples analysed. Quality control is ensured via the use of standards, blanks and duplicates. No significant QA/QC issues have arisen in recent drilling results. Historical drilling has used a combination of Fire Assay, Aqua Regia and PAL analysis. These assay methodologies are appropriate for the resources in question.



Criteria	JORC Code Explanation	Commentary
Verification of sampling and assaying	<ul style="list-style-type: none"> The verification of significant intersections by either independent or alternative company personnel. The use of twinned holes. Documentation of primary data, data entry procedures, data verification, data storage (physical and electronic) protocols. Discuss any adjustment to assay data. 	<ul style="list-style-type: none"> No independent or alternative verifications are available. Virtual twinned holes have been drilled in several instances across all sites with no significant issues highlighted. Drillhole data is also routinely confirmed by development assay data in the operating environment. Primary data is collected utilising LogChief. The information is imported into a SQL database server and verified. All data used in the calculation of resources and reserves are compiled in databases (underground and open pit) which are overseen and validated by senior geologists. No adjustments have been made to any assay data.
Location of data points	<ul style="list-style-type: none"> Accuracy and quality of surveys used to locate drill holes (collar and down-hole surveys), trenches, mine workings and other locations used in Mineral Resource estimation. Specification of the grid system used. Quality and adequacy of topographic control. 	<ul style="list-style-type: none"> All data is spatially oriented by survey controls via direct pickups by the survey department. Drillholes are all surveyed downhole, predominantly with a Gyro tool. All drilling and resource estimation is preferentially undertaken in local mine grid at the various sites. Topographic control is generated from a combination of remote sensing methods and ground-based surveys. This methodology is adequate for the resources in question.
Data spacing and distribution	<ul style="list-style-type: none"> Data spacing for reporting of Exploration Results. Whether the data spacing and distribution is sufficient to establish the degree of geological and grade continuity appropriate for the Mineral Resource and Ore Reserve estimation procedure(s) and classifications applied. Whether sample compositing has been applied. 	<ul style="list-style-type: none"> Data spacing is variable dependent upon the individual orebody under consideration. A lengthy history of mining has shown that this approach is appropriate for the Mineral Resource estimation process and to allow for classification of the resources as they stand. Compositing is carried out based upon the modal sample length of each individual domain.
Orientation of data in relation to geological structure	<ul style="list-style-type: none"> Whether the orientation of sampling achieves unbiased sampling of possible structures and the extent to which this is known, considering the deposit type. If the relationship between the drilling orientation and the orientation of key mineralised structures is considered to have introduced a sampling bias, this should be assessed and reported if material. 	<ul style="list-style-type: none"> Drilling intersections are nominally designed to be normal to the orebody as far as underground infrastructure constraints / topography allows. Development sampling is nominally undertaken normal to the orebody. Where drilling angles are sub-optimal, the number of samples per drill hole used in the estimation is limited to reduce any potential bias if warranted. It is not considered that drilling orientation has introduced an appreciable sampling bias.
Sample security	<ul style="list-style-type: none"> The measures taken to ensure sample security. 	<ul style="list-style-type: none"> For samples assayed at on-site laboratory facilities, samples are delivered to the facility by Company staff. Upon delivery the responsibility for sample security and storage falls to the independent third-party operators of these facilities. For samples assayed off-site, samples are delivered to a third-party transport service, who in turn relay them to the independent laboratory contractor. Samples are stored securely until they leave site.
Audits or reviews	<ul style="list-style-type: none"> The results of any audits or reviews of sampling techniques and data 	<ul style="list-style-type: none"> Site generated resources and reserves and the parent geological data is routinely reviewed by the Westgold Corporate technical team.



SECTION 2 REPORTING OF EXPLORATION RESULTS

(Criteria listed in the preceding section also apply to this section.)

Criteria	JORC Code Explanation	Commentary
Mineral tenement and land tenure status	<ul style="list-style-type: none"> Type, reference name/number, location and ownership including agreements or material issues with third parties such as joint ventures, partnerships, overriding royalties, native title interests, historical sites, wilderness or national park and environmental settings. The security of the tenure held at the time of reporting along with any known impediments to obtaining a licence to operate in the area. 	<ul style="list-style-type: none"> Native title interests are recorded against several WGX tenements. The CMGP tenements are held by the Big Bell Gold Operations (BBGO) of which Westgold has 100% ownership. Several third party royalties exist across various tenements at CMGP, over and above the state government royalty. The Fortnum Gold Project tenure is 100% owned by Westgold through subsidiary company Aragon Resources Pty. Ltd. Various Royalties apply to the package. The most pertinent being; <ul style="list-style-type: none"> \$10/oz after first 50,000oz (capped at \$2M)- Perilya State Government – 2.5% NSR The tenure is currently in good standing. There are no known issues regarding security of tenure. There are no known impediments to continued operation. WGX operates in accordance with all environmental conditions set down as conditions for grant of the leases.
Exploration done by other parties	<ul style="list-style-type: none"> Acknowledgment and appraisal of exploration by other parties 	<ul style="list-style-type: none"> The CMGP tenements have an exploration and production history in excess of 100 years. The FGO tenements have an exploration and production history in excess of 30 years. Westgold work has generally confirmed the veracity of historic exploration data.
Geology	<ul style="list-style-type: none"> Deposit type, geological setting and style of mineralisation. 	<p>MGO</p> <ul style="list-style-type: none"> MGO is located in the Achaean Murchison Province, a granite-greenstone terrane in the northwest of the Yilgarn Craton. Greenstone belts trending north-northeast are separated by granite-gneiss domes, with smaller granite plutons also present within or on the margins of the belts. The Paddy's Flat area is located on the western limb of a regional fold, the Polelle Syn- cline, within a sequence of mafic to ultramafic volcanics with minor interflow sediments and banded iron-formation. The sequence has also been intruded by felsic porphyry dykes prior to mineralisation. Mineralisation is located along four sub-parallel trends at Paddy's Flat which can be summarised as containing three dominant mineralisation styles: <ul style="list-style-type: none"> Sulphide replacement BIF hosted gold. Quartz vein hosted shear-related gold. Quartz-carbonate-sulphide stockwork vein and alteration related gold. The Yaloginda area is a gold-bearing Archaean greenstone belt situated ~15km south of Meekatharra. The deposits in the area are hosted in a strained and metamorphosed volcanic sequence that consists primarily of ultramafic and high-magnesium basalt with minor komatiite, peridotite, gabbro, tholeiitic basalt and interflow sediments. The sequence was intruded by a variety of felsic porphyry and intermediate sills and dykes. The Reedy's mining district is located approximately 15 km to the south-east to Meekatharra and to the south of Lake Annean. The Reedy's gold deposits occur within a north-south trending greenstone belt, two to five kilometres wide, composed of volcano-sedimentary sequences and separated multiphase syn- and post-tectonic granitoid complexes.



Criteria	JORC Code Explanation	Commentary
		<p>CGO</p> <ul style="list-style-type: none"> CGO is located in the Achaean Murchison Province, a granite-greenstone terrane in the northwest of the Yilgarn Craton. Greenstone belts trending north-northeast are separated by granite-gneiss domes, with smaller granite plutons also present within or on the margins of the belts. Mineralisation at Big Bell is hosted in the shear zone (Mine Sequence) and is associated with the post-peak metamorphic retrograde assemblages. Stibnite, native antimony and trace arsenopyrite are disseminated through the K-feldspar-rich lode schist. These are intergrown with pyrite and pyrrhotite and chalcopyrite. Mineralisation outside the typical Big Bell host rocks (KPSH), for example 1,600N and Shocker, also display a very strong W-As-Sb geochemical halo. Numerous gold deposits occur within the Cuddingwarra Project area, the majority of which are hosted within the central mafic-ultramafic ± felsic porphyry sequence. Within this broad framework, mineralisation is shown to be spatially controlled by competency contrasts across, and flexures along, layer-parallel D2 shear zones, and is maximised when transected by corridors of northeast striking D3 faults and fractures. The Great Fingall Dolerite hosts the majority gold mineralisation within the portion of the greenstone belt proximal to Cue (The Day Dawn Project Area). Unit AGF3 is the most brittle of all the five units and this characteristic is responsible for its role as the most favourable lithological host to gold mineralisation in the Greenstone belt.
		<p>FGO</p> <ul style="list-style-type: none"> The Fortnum deposits are Paleoproterozoic shear-hosted gold deposits within the Fortnum Wedge, a localised thrust duplex of Narracoota Formation within the overlying Ravelstone Formation. Both stratigraphic formations comprise part of the Bryah Basin in the Capricorn Orogen, Western Australia. The Horseshoe Cassidy deposits are hosted within the Ravelstone Formation (siltstone and argillite) and Narracoota Formation (highly-altered, moderate to strongly deformed mafic to ultramafic rocks). The main zone of mineralisation is developed within a horizon of highly altered magnesian basalt. Gold mineralisation is associated with strong vein stock works that are confined to the altered mafic. Alteration consists of two types; stockwork proximal silica-carbonate-fuchsite-haematite-pyrite and distal silica-haematite-carbonate+/- chlorite. The Peak Hill district represents remnants of a Proterozoic fold belt comprising highly deformed trough and shelf sediments and mafic / ultramafic volcanics, which are generally moderately metamorphosed (except for the Peak Hill Metamorphic Suite).



Criteria	JORC Code Explanation	Commentary
Drill hole Information	<ul style="list-style-type: none"> A summary of all information material to the understanding of the exploration results including a tabulation of the following information for all Material drill holes: <ul style="list-style-type: none"> easting and northing of the drill hole collar elevation or RL (Reduced Level – elevation above sea level in metres) of the drill hole collar <ul style="list-style-type: none"> dip and azimuth of the hole down hole length and interception depth hole length. If the exclusion of this information is justified on the basis that the information is not Material and this exclusion does not detract from the understanding of the report, the Competent Person should clearly explain why this is the case. 	<ul style="list-style-type: none"> Tables containing drillhole collar, downhole survey and intersection data are included in the body of the announcement.
Data aggregation methods	<ul style="list-style-type: none"> In reporting Exploration Results, weighting averaging techniques, maximum and/or minimum grade truncations (e.g. cutting of high grades) and cut-off grades are usually Material and should be stated. Where aggregate intercepts incorporate short lengths of high grade results and longer lengths of low grade results, the procedure used for such aggregation should be stated and some typical examples of such aggregations should be shown in detail. The assumptions used for any reporting of metal equivalent values should be clearly stated. 	<ul style="list-style-type: none"> All results presented are length weighted. No high-grade cuts are used. Reported results contain no more than two contiguous metres of internal dilution below 0.5g/t. Results are reported above a variety of gram / metre cut-offs dependent upon the nature of the hole. These are cut-offs are clearly stated in the relevant tables.
Relationship between mineralisation widths and intercept lengths	<ul style="list-style-type: none"> These relationships are particularly important in the reporting of Exploration Results. If the geometry of the mineralisation with respect to the drill hole angle is known, its nature should be reported. If it is not known and only the down hole lengths are reported, there should be a clear statement to this effect (e.g. 'down hole length, true width not known'). 	<ul style="list-style-type: none"> Unless indicated to the contrary, all results reported are true width. Given restricted access in the underground environment the majority of drillhole intersections are not normal to the orebody.
Diagrams	<ul style="list-style-type: none"> Appropriate maps and sections (with scales) and tabulations of intercepts should be included for any significant discovery being reported These should include, but not be limited to a plan view of drill hole collar locations and appropriate sectional views. 	<ul style="list-style-type: none"> Appropriate diagrams are provided in the body of the release if required.
Balanced reporting	<ul style="list-style-type: none"> Where comprehensive reporting of all Exploration Results is not practicable, representative reporting of both low and high grades and/or widths should be practiced to avoid misleading reporting of Exploration Results. 	<ul style="list-style-type: none"> Appropriate balance in exploration results reporting is provided.
Other substantive exploration data	<ul style="list-style-type: none"> Other exploration data, if meaningful and material, should be reported including (but not limited to): geological observations; geophysical survey results; geochemical survey results; bulk samples – size and method of treatment; metallurgical test results; bulk density, groundwater, geotechnical and rock characteristics; potential deleterious or contaminating substances. 	<ul style="list-style-type: none"> There is no other substantive exploration data associated with the release.
Further work	<ul style="list-style-type: none"> The nature and scale of planned further work (e.g. tests for lateral extensions or depth extensions or large-scale step-out drilling). Diagrams clearly highlighting the areas of possible extensions, including the main geological interpretations and future drilling areas, provided this information is not commercially sensitive. 	<ul style="list-style-type: none"> Ongoing surface and underground exploration activities will be undertaken to support continuing mining activities at Westgold Gold Operations.



SECTION 3 ESTIMATION AND REPORTING OF MINERAL RESOURCES

(Criteria listed in section 1, and where relevant in section 2, also apply to this section.)

Criteria	JORC Code Explanation	Commentary
Database integrity	<ul style="list-style-type: none"> Measures taken to ensure that data has not been corrupted by, for example, transcription or keying errors, between its initial collection and its use for Mineral Resource estimation purposes. Data validation procedures used. 	<ul style="list-style-type: none"> The database used for the estimation was extracted from the Westgold's DataShed database management system stored on a secure SQL server. As new data is acquired it passes through a validation approval system designed to pick up any significant errors before the information is loaded into the master database.
Site visits	<ul style="list-style-type: none"> Comment on any site visits undertaken by the Competent Person and the outcome of those visits. If no site visits have been undertaken indicate why this is the case. 	<ul style="list-style-type: none"> Mr. Russell visits Westgold Gold Operations regularly.
Geological interpretation	<ul style="list-style-type: none"> Confidence in (or conversely, the uncertainty of) the geological interpretation of the mineral deposit. Nature of the data used and of any assumptions made. The effect, if any, of alternative interpretations on Mineral Resource estimation. The use of geology in guiding and controlling Mineral Resource estimation. The factors affecting continuity both of grade and geology. 	<ul style="list-style-type: none"> Mining in the Murchison district has occurred since 1800's providing significant confidence in the current geological interpretations across all projects. No alternative interpretations are currently considered viable. Geological interpretation of the deposit was carried out using a systematic approach to ensure that the resultant estimated Mineral Resource figure was both sufficiently constrained, and representative of the expected sub-surface conditions. In all aspects of resource estimation the factual and interpreted geology was used to guide the development of the interpretation. Geological matrixes were established to assist with interpretation and construction of the estimation domains. The structural regime is the dominant control on geological and grade continuity in the Murchison. Lithological factors such as rheology contrast are secondary controls on grade distribution. Low-grade stockpiles are derived from previous mining of the mineralisation styles outlined above.
Dimensions	<ul style="list-style-type: none"> The extent and variability of the Mineral Resource expressed as length (along strike or otherwise), plan width, and depth below surface to the upper and lower limits of the Mineral Resource. 	<p>MGO</p> <ul style="list-style-type: none"> The Paddy's Flat Trend is mineralised a strike length of >3,900m, a lateral extent of up +230m and a depth of over 500m. Bluebird is mineralised a strike length of >1,800m, a lateral extent of up +50m and a depth of over 500m. Triton – South Emu is mineralised a strike length of >1,100m, a lateral extent of tens of metres and a depth of over 500m.



Criteria	JORC Code Explanation	Commentary
		<p>CGO</p> <ul style="list-style-type: none"> The Big Bell Trend is mineralised a strike length of >3,900m, a lateral extent of +50m and a depth of over 1,500m. Great Fingall is mineralised a strike length of >500m, a lateral extent of >600m and a depth of over 800m. Black Swan South is mineralised a strike length of >1,700m, a lateral extent of +75m and a depth of over 300m. <p>FGO</p> <ul style="list-style-type: none"> The Starlight ore system is mined underground and has a number of lodes varying in strike and width from 5-150m and 1-40m respectively. The wider zones resulting from the confluence of lodes. The Yarlalweelor mineral resource extends over 1,400m in strike length, 570m in lateral extent and 190m in depth. The Tom's and Sam's mineral resource extends over 650m in strike length, 400m in lateral extent and 130m in depth. The Eldorado mineral resource extends over 240m in strike length, 100m in lateral extent and 100m in depth. Low-grade stockpiles are of various dimensions. All modelling and estimation work undertaken by Westgold is carried out in three dimensions via Surpac Vision. After validating the drillhole data to be used in the estimation, interpretation of the orebody is undertaken in sectional and / or plan view to create the outline strings which form the basis of the three dimensional orebody wireframe. Wireframing is then carried out using a combination of automated stitching algorithms and manual triangulation to create an accurate three dimensional representation of the sub-surface mineralised body. Drillhole intersections within the mineralised body are defined, these intersections are then used to flag the appropriate sections of the drillhole database tables for compositing purposes. Drillholes are subsequently composited to allow for grade estimation. In all aspects of resource estimation the factual and interpreted geology was used to guide the development of the interpretation. Once the sample data has been composited, a statistical analysis is undertaken to assist with determining estimation search parameters, top-cuts etc. Varioc analysis of individual domains is undertaken to assist with determining appropriate search parameters. These are incorporated with observed geological and geometrical features to determine the most appropriate search parameters. An empty block model is then created for the area of interest. This model contains attributes set at background values for the various elements of interest as well as density, and various estimation parameters that are subsequently used to assist in resource categorisation. The block sizes used in the model will vary depending on orebody geometry, minimum mining units, estimation parameters and levels of informing data available.



Criteria	JORC Code Explanation	Commentary
		<ul style="list-style-type: none"> Grade estimation is then undertaken, with the ordinary kriging estimation method considered as standard, although in some circumstances where sample populations are small, or domains are unable to be accurately defined, inverse distance weighting estimation techniques will be used. Both by-product and deleterious elements are estimated at the time of primary grade estimation if required. It is assumed that by-products correlate well with gold. There are no assumptions made about the recovery of by-products. The resource is then depleted for mining voids and subsequently classified in line with JORC guidelines utilising a combination of various estimation derived parameters and geological / mining knowledge. This approach has proven to be applicable to Westgold's gold assets. Estimation results are routinely validated against primary input data, previous estimates and mining output. Good reconciliation between mine claimed figures and milled figures was routinely achieved during past production history.
Moisture	<ul style="list-style-type: none"> Whether the tonnages are estimated on a dry basis or with natural moisture, and the method of determination of the moisture content. 	<ul style="list-style-type: none"> Tonnage estimates are dry tonnes.
Cut-off parameters	<ul style="list-style-type: none"> The basis of the adopted cut-off grade(s) or quality parameters applied. 	<ul style="list-style-type: none"> The cut off grades used for the reporting of the Mineral Resources have been selected based on the style of mineralisation, depth from surface of the mineralisation and the most probable extraction technique.
Mining factors or assumptions	<ul style="list-style-type: none"> Assumptions made regarding possible mining methods, minimum mining dimensions and internal (or, if applicable, external) mining dilution. It is always necessary as part of the process of determining reasonable prospects for eventual economic extraction to consider potential mining methods, but the assumptions made regarding mining methods and parameters when estimating Mineral Resources may not always be rigorous. Where this is the case, this should be reported with an explanation of the basis of the mining assumptions made. 	<ul style="list-style-type: none"> Variable by deposit. No mining dilution or ore loss has been modelled in the resource model or applied to the reported Mineral Resource.
Metallurgical factors or assumptions	<ul style="list-style-type: none"> The basis for assumptions or predictions regarding metallurgical amenability. It is always necessary as part of the process of determining reasonable prospects for eventual economic extraction to consider potential metallurgical methods, but the assumptions regarding metallurgical treatment processes and parameters made when reporting Mineral Resources may not always be rigorous. Where this is the case, this should be reported with an explanation of the basis of the metallurgical assumptions made. 	<ul style="list-style-type: none"> Not considered for Mineral Resource. Applied during the Reserve generation process.
Environmental factors or assumptions	<ul style="list-style-type: none"> Assumptions made regarding possible waste and process residue disposal options. It is always necessary as part of the process of determining reasonable prospects for eventual economic extraction to consider the potential environmental impacts of the mining and processing operation. While at this stage the determination of potential environmental impacts, particularly for a greenfields project, may not always be well advanced, the status of early consideration of these potential environmental impacts should be reported. Where these aspects have not been considered this should be reported with an explanation of the environmental assumptions made. 	<ul style="list-style-type: none"> Westgold operates in accordance with all environmental conditions set down as conditions for grant of the respective leases.



Criteria	JORC Code Explanation	Commentary
Bulk density	<ul style="list-style-type: none"> Whether assumed or determined. If assumed, the basis for the assumptions. If determined, the method used, whether wet or dry, the frequency of the measurements, the nature, size and representativeness of the samples. The bulk density for bulk material must have been measured by methods that adequately account for void spaces (vugs, porosity, etc.), moisture and differences between rock and alteration zones within the deposit. Discuss assumptions for bulk density estimates used in the evaluation process of the different materials. 	<ul style="list-style-type: none"> Bulk density of the mineralisation is variable and is for the most part lithology and oxidation rather than mineralisation dependent. A large suite of bulk density determinations have been carried out across the project areas. Bulk densities are applied by weathering and lithological domains A significant past mining history has validated the assumptions made surrounding bulk density.
Classification	<ul style="list-style-type: none"> The basis for the classification of the Mineral Resources into varying confidence categories. Whether appropriate account has been taken of all relevant factors (i.e. relative confidence in tonnage/grade estimations, reliability of input data, confidence in continuity of geology and metal values, quality, quantity and distribution of the data). Whether the result appropriately reflects the Competent Person's view of the deposit. 	<ul style="list-style-type: none"> Resources are classified in line with JORC guidelines utilising a combination of various estimation derived parameters, input data and geological / mining knowledge. This approach considers all relevant factors and reflects the Competent Person's view of the deposit
Audits or reviews	<ul style="list-style-type: none"> The results of any audits or reviews of Mineral Resource estimates. 	<ul style="list-style-type: none"> Resource estimates are peer reviewed by the Corporate technical team. No external reviews have been undertaken.
Discussion of relative accuracy/ confidence	<ul style="list-style-type: none"> Where appropriate a statement of the relative accuracy and confidence level in the Mineral Resource estimate using an approach or procedure deemed appropriate by the Competent Person. For example, the application of statistical or geostatistical procedures to quantify the relative accuracy of the resource within stated confidence limits, or, if such an approach is not deemed appropriate, a qualitative discussion of the factors that could affect the relative accuracy and confidence of the estimate. The statement should specify whether it relates to global or local estimates, and, if local, state the relevant tonnages, which should be relevant to technical and economic evaluation. Documentation should include assumptions made and the procedures used. These statements of relative accuracy and confidence of the estimate should be compared with production data, where available. 	<ul style="list-style-type: none"> All currently reported resources estimates are considered robust, and representative on both a global and local scale. A continuing history of mining with good reconciliation of mine claimed to mill recovered provides confidence in the accuracy of the estimates.



SECTION 4 ESTIMATION AND REPORTING OF ORE RESERVES

(Criteria listed in section 1, and where relevant in sections 2 and 3, also apply to this section.)

Criteria	JORC Code Explanation	Commentary
Mineral Resource estimate for conversion to Ore Reserves	<ul style="list-style-type: none"> Description of the Mineral Resource estimate used as a basis for the conversion to an Ore Reserve. Clear statement as to whether the Mineral Resources are reported additional to, or inclusive of, the Ore Reserves. 	<ul style="list-style-type: none"> At all Operations the Ore Reserve is based on the corresponding reported Mineral Resource estimate. Mineral Resources reported are inclusive of those Mineral Resources modified to produce the Ore Reserve estimate. At all projects, all Mineral Resources that have been converted to Ore Reserve are classified as either an Indicated or Measured material.
Site visits	<ul style="list-style-type: none"> Comment on any site visits undertaken by the Competent Person and the outcome of those visits. If no site visits have been undertaken indicate why this is the case. 	<ul style="list-style-type: none"> Mr. Anthony Buckingham has over 15 years' experience specifically in the Western Australian mining industry. Mr. Buckingham visits the mine sites on a regular basis and is one of the primary engineers involved in mine planning, site infrastructure and project management.
Study status	<ul style="list-style-type: none"> The type and level of study undertaken to enable Mineral Resources to be converted to Ore Reserves. The Code requires that a study to at least Pre-Feasibility Study level has been undertaken to convert Mineral Resources to Ore Reserves. Such studies will have been carried out and will have determined a mine plan that is technically achievable and economically viable, and that material Modifying Factors have been considered 	<ul style="list-style-type: none"> Processing at the Murchison operations has occurred continuously since 2015, with previous production occurring throughout 1800's, 1900's and 2000's. Various mineralisation styles and host domains have been mined since discovery. Mining during this time has ranged from open pit cut backs, insitu surface excavations to extensional underground developments. Budget level, 24 month projected, forecasts are completed on a biannual basis, validating cost and physical inventory assumptions and modelling. These updated parameters are subsequently used for the basis of the Ore Reserve modification and financial factors. Following exploration and infill drilling activity, Resource models are updated on both the estimation of grade and classification. These updated Resource Models then form the foundation for Ore Reserve calculation.
Cut-off parameters	<ul style="list-style-type: none"> The basis of the cut-off grade(s) or quality parameters applied. 	<ul style="list-style-type: none"> Underground Mines - Cut off grades are used to determine the economic viability of the convertible Resource. COG for underground mines incorporate OPEX development and production costs, grade control, haulage, milling, administration, along with state and private royalty conditions. These cuts are applied to production shapes (stopes) as well as high grade development. Additionally an incremental COG is applied to low grade development, whereby access to a high grade area is required. Open Pit Mines - The pit rim cut-off grade (COG) was determined as part of the Ore Reserve estimation. The pit rim COG accounts for grade control, haulage, milling, administration, along with state and private royalty conditions. This cost profile is equated against the value of the mining block in terms of recovered metal and the expected selling price. The COG is then used to determine whether or not a mining block should be delivered to the treatment plant for processing, stockpiled as low-grade or taken to the waste dump. Stockpile COG – A marginal grade is determined for each stockpile inventory to ensure it is economically viable. The COG accounts for haulage, milling, administration, along with state and private royalty conditions.



Criteria	JORC Code Explanation	Commentary
Mining factors or assumptions	<ul style="list-style-type: none"> The method and assumptions used as reported in the Pre-Feasibility or Feasibility Study to convert the Mineral Resource to an Ore Reserve (i.e. either by application of appropriate factors by optimisation or by preliminary or detailed design). The choice, nature and appropriateness of the selected mining method(s) and other mining parameters including associated design issues such as pre-strip, access, etc. The assumptions made regarding geotechnical parameters (e.g. pit slopes, stope sizes, etc.), grade control and pre-production drilling. The major assumptions made and Mineral Resource model used for pit and stope optimisation (if appropriate). The mining dilution factors used. The mining recovery factors used. Any minimum mining widths used. The manner in which Inferred Mineral Resources are utilised in mining studies and the sensitivity of the outcome to their inclusion. The infrastructure requirements of the selected mining methods. 	<ul style="list-style-type: none"> All Ore Reserve inventories are based upon detailed 3 dimensional designs to ensure practical mining conditions are met. Additionally all Ore Reserve inventories are above the mine specific COG(s) as well as containing only Measured and Indicated material. Depending upon the mining method – modifying factors are used to address hydrological, geotechnical, minimum width and blasting conditions. <p>Open Pit Methodology</p> <ul style="list-style-type: none"> Following consideration of the various modifying factors the following rules were applied to the reserve estimation process for the conversion of measured and indicated resource to reserve for suitable evaluation. The mining shape in the reserve estimation is generated by a wireframe (geology interpretation of the ore zone) which overlays the block model. Where the wire frame cuts the primary block, sub blocks fill out the remaining space to the wire frame boundary (effectively the mining shape). It is reasonable to assume that the mining method can selectively mine to the wire frame boundary with the additional dilution provision stated below. Ore Reserves are based on Pit shape designs – with appropriate modifications to the original Whittle Shell outlines to ensure compliance with practical mining parameters. Geotechnical parameters aligned to the Open Pit Ore Reserves are either based on observed existing pit shape specifics or domain specific expectations / assumptions. Various geotechnical reports and retrospective reconciliations were considered in the design parameters. A majority of the open pits have a final design wall angle of 39-46 degrees, which is seen as conservative. Dilution of the ore through the mining process has been accounted for within the Ore Reserve quoted inventory. Various dilution ratios are used to represent the style of mineralisation. Minimum mining widths have been accounted for in the designs, with the utilisation of 40t or 90t trucking parameters depending upon the size of the pit excavation. No specific ground support requirements are needed outside of suitable pit slope design criteria based on specific geotechnical domains. Mining sequence is included in the mine scheduling process for determining the economic evaluation and takes into account available operating time and mining equipment size and performance. No Inferred material is included within the open pit statement, though in various pit shapes Inferred material is present. In these situations, Inferred material is classified as waste.



Criteria	JORC Code Explanation	Commentary
		<p>Underground Methodology</p> <ul style="list-style-type: none"> All Underground Reserves are based on 3D design strings and polygon derived stope shapes following the Measured and Indicated Resource (in areas above the COG). A complete mine schedule is then derived from this design to create a LOM plan and financial analysis. Mining methodology is based on previous mining experience. All mining systems within the Reserve statement are standardised, mechanised Western Australian methods. In large disseminated orebodies sub level caving, sub level open stoping or single level bench stoping production methodologies are used. In narrow vein laminated quartz hosted domains a conservative narrow bench style mining method is used. In narrow flat dipping deposits a Flat Long Hole process is adopted (with fillets in the footwall for rill angle) and or jumbo stoping. Stope shape parameters have been based on historical data (where possible) or expected stable hydraulic radius dimensions. Stope inventories have been determined by cutting the geological wireframe at above the area specific COG and applying mining dilution and ore loss factors. The ore loss ratio accounts for pillar locations between the stopes (not operational ore loss) whilst dilution allows for conversion of the geological wireframe into a minable shape (Planned dilution) as well as hangingwall relaxation and blasting overbreak (unplanned dilution). Minimum mining widths have been applied in the various mining methods. Stope shape dimensions vary between the various methods. Default hydraulic radii are applied to each method, and are derived either from historical production or geotechnical reports / recommendations. Where no data or exposure is available conservative HR values are used based on the contact domain type. Mining sequence is included in the mine scheduling process for determining the economic evaluation and takes into account available operating time and mining equipment size and performance.
Metallurgical factors or assumptions	<ul style="list-style-type: none"> The metallurgical process proposed and the appropriateness of that process to the style of mineralisation. Whether the metallurgical process is well-tested technology or novel in nature. The nature, amount and representativeness of metallurgical test work undertaken, the nature of the metallurgical domaining applied and the corresponding metallurgical recovery factors applied. Any assumptions or allowances made for deleterious elements. The existence of any bulk sample or pilot scale test work and the degree to which such samples are considered representative of the orebody as a whole. For minerals that are defined by a specification, has the ore reserve estimation been based on the appropriate mineralogy to meet the specifications? 	<p>CGO</p> <ul style="list-style-type: none"> CGO has an existing conventional CIL processing plant. The plant has a nameplate capacity of 1.4Mtpa though this can be varied between 1.2-1.6Mtpa based upon material type. Gold extraction is achieved using two staged crushing, ball milling with gravity concentration and Carbon in Leach. A high portion of the Reserve mill feed have extensive data when processed at other plants in the past 2-3 decades. This long history of processing demonstrates the appropriateness of the process to the styles of mineralisation considered. No deleterious elements are considered, as a long history of processing has shown this to be not a material concern.



Criteria	JORC Code Explanation	Commentary
		<p>MGO</p> <ul style="list-style-type: none"> MGO has an existing conventional CIL processing plant – which has been operational in various periods since the late 1980's. The plant has a nameplate capacity of 1.6Mtpa though this can be varied between 1.2-1.8Mtpa based upon material type. Gold extraction is achieved using single stage crushing, SAG and ball milling with gravity concentration and Carbon in Leach. A long history of processing through the existing facility demonstrates the appropriateness of the process to the styles of mineralisation considered. No deleterious elements are considered, as a long history of processing has shown this to be not a material concern. <p>FGO</p> <ul style="list-style-type: none"> FGO has an existing conventional CIL processing plant – which has been operational in various periods since the late 1980's. The plant has a nameplate capacity of 1.0Mtpa though this can be varied between 0.8-1.2Mtpa based upon material type. An extensive database of historical CIL recoveries as well as detailed metallurgical test work is available for the various deposits and these have been incorporated into the COG analysis and financial models.
Environmental	<ul style="list-style-type: none"> The status of studies of potential environmental impacts of the mining and processing operation. Details of waste rock characterisation and the consideration of potential sites, status of design options considered and, where applicable, the status of approvals for process residue storage and waste dumps should be reported. 	<p>MGO</p> <ul style="list-style-type: none"> MGO operates under and in compliance with a number of operating environmental plans, which cover its environmental impacts and outputs as well as reporting guidelines / frequencies. Various Reserve inventories do not have current DMP / DWER licenses – though there are no abnormal conditions / factors associated with these assets which the competent person sees as potentially threatening to the particular project. The operation is frequently inspected by the regulatory authorities of DMP and DWER with continual feedback on environmental best practice and reporting results. Flood Management, Inclement Weather and Traffic Management Plans existing for the operation to minimise the risks of environmental impacts. Standard Operating Procedures for the transfer of hazardous materials and restocking of Dangerous Goods existing on site to mitigate the risk of these materials entering the environment.



Criteria	JORC Code Explanation	Commentary
		<p>CGO</p> <ul style="list-style-type: none"> CGO operates under and in compliance with a number of operating environmental plans, which cover its environmental impacts and outputs as well as reporting guidelines / frequencies. Various Reserve inventories do not have current DMP / DWER licenses – though there are no abnormal conditions / factors associated with these assets which the competent person sees as potentially threatening to the particular project. The operation is frequently inspected by the regulatory authorities of DMP and DWER with continual feedback on environmental best practice and reporting results. Flood Management, Inclement Weather and Traffic Management Plans existing for the operation to minimise the risks of environmental impacts. Standard Operating Procedures for the transfer of hazardous materials and restocking of Dangerous Goods existing on site to mitigate the risk of these materials entering the environment. <p>FGO</p> <ul style="list-style-type: none"> FGO operates under and in compliance with a number of operating environmental plans, which cover its environmental impacts and outputs as well as reporting guidelines / frequencies. Various Reserve inventories do not have current DMP / DWER licenses – though there are no abnormal conditions / factors associated with these assets which the competent person sees as potentially threatening to the particular project. The operation is frequently inspected by the regulatory authorities of DMP and DWER with continual feedback on environmental best practice and reporting results. Flood Management, Inclement Weather and Traffic Management Plans existing for the operation to minimise the risks of environmental impacts. Standard Operating Procedures for the transfer of hazardous materials and restocking of Dangerous Goods existing on site to mitigate the risk of these materials entering the environment.



Criteria	JORC Code Explanation	Commentary
Infrastructure	<ul style="list-style-type: none"> The existence of appropriate infrastructure: availability of land for plant development, power, water, transportation (particularly for bulk commodities), labour, accommodation; or the ease with which the infrastructure can be provided, or accessed. 	<p>MGO</p> <ul style="list-style-type: none"> MGO has an operating plant and tailings storage facility, along with extensive mechanical and electrical maintenance facilities. The site also includes existing administration buildings as well as a 300 man accommodation camp facility. Power is provided by onsite diesel generation, with potable water sourced from nearby bore water (post treatment). Communications and roadways are existing. Airstrip facilities are available at the local Meekatharra airstrip (30km). <p>CGO</p> <ul style="list-style-type: none"> CGO has an operating plant and tailings storage facility, along with extensive mechanical and electrical maintenance facilities. The site also includes existing administration buildings as well as a 250 man and a 100 man accommodation camp facilities. Power is provided by onsite diesel generation, with potable water sourced from nearby bore water (post treatment). Communications and roadways are existing. Airstrip facilities are available at the local Cue airstrip (20km). <p>FGM</p> <ul style="list-style-type: none"> FGM has an operating plant and tailings storage facility, along with extensive mechanical and electrical maintenance facilities. The site also includes existing administration buildings as well as a 200 man accommodation camp facility. Power is provided by onsite diesel generation, with potable water sourced from nearby bore water (post treatment). Communications and roadways are existing. Airstrip facilities are available on site.
Costs	<ul style="list-style-type: none"> The derivation of, or assumptions made, regarding projected capital costs in the study. The methodology used to estimate operating costs. Allowances made for the content of deleterious elements. The source of exchange rates used in the study. Derivation of transportation charges. The basis for forecasting or source of treatment and refining charges, penalties for failure to meet specification, etc. The allowances made for royalties payable, both Government and private. 	<ul style="list-style-type: none"> Processing costs are based on actual cost profiles with variations existing between the various oxide states. Site G&A and portioned corporate overheads are included within the analysis (based upon previous Budget years actuals). Mining costs are derived primarily from the current cost profiles in both the open pit and underground environment. Geology and Grade Control costs are incorporated in the overall cost profile and are based upon previously reconciled Budgetary forecasts. Haulage costs used are either contractual rates or if in the case where a mine has none, a generic cost per tkm unit rate is utilised. Both state government and private royalties are incorporated into costings as appropriate.



Criteria	JORC Code Explanation	Commentary
Revenue factors	<ul style="list-style-type: none"> The derivation of, or assumptions made regarding revenue factors including head grade, metal or commodity price(s) exchange rates, transportation and treatment charges, penalties, net smelter returns, etc. The derivation of assumptions made of metal or commodity price(s), for the principal metals, minerals and co-products. 	<ul style="list-style-type: none"> Mine Revenue, COG's, open pit optimisation and royalty costs are based on the long term forecast of A\$2,200/oz. No allowance is made for silver by-products.
Market assessment	<ul style="list-style-type: none"> The demand, supply and stock situation for the particular commodity, consumption trends and factors likely to affect supply and demand into the future. A customer and competitor analysis along with the identification of likely market windows for the product. Price and volume forecasts and the basis for these forecasts. For industrial minerals the customer specification, testing and acceptance requirements prior to a supply contract. 	<ul style="list-style-type: none"> Detailed economic studies of the gold market and future price estimates are considered by Westgold and applied in the estimation of revenue, cut-off grade analysis and future mine planning decisions. There remains strong demand and no apparent risk to the long term demand for the gold.
Economic	<ul style="list-style-type: none"> The inputs to the economic analysis to produce the net present value (NPV) in the study, the source and confidence of these economic inputs including estimated inflation, discount rate, etc. NPV ranges and sensitivity to variations in the significant assumptions and inputs. 	<ul style="list-style-type: none"> Each separate mine (open pit, underground or stockpile) has been assessed on a standard operating cash generating model. Capital costs have been included thereafter to determine an economic outcome. Subsequently each Operating centre (MGO, CGO and FGO) has had a Discounted Cash Flow model constructed to further demonstrate the Reserve has a positive economic outcome. A discount rate of 8% is applied in DCF modelling. No escalation of costs and gold price is included. Sensitivity analysis of key financial and physical parameters is applied to future development projects.
Social	<ul style="list-style-type: none"> The status of agreements with key stakeholders and matters leading to social licence to operate. 	<ul style="list-style-type: none"> All projects are fully permitted and a major contributor to the local and regional economy. It has no external pressures that impact its operation or which could potentially jeopardise its continuous operation. As new open pits or underground operations develop the site will require separate environmental approvals from the different regulating bodies. Where required, the operation has a Native Title and Pastoral Agreement.
Other	<ul style="list-style-type: none"> To the extent relevant, the impact of the following on the project and/or on the estimation and classification of the Ore Reserves: Any identified material naturally occurring risks. The status of material legal agreements and marketing arrangements. The status of governmental agreements and approvals critical to the viability of the project, such as mineral tenement status, and government and statutory approvals. There must be reasonable grounds to expect that all necessary Government approvals will be received within the timeframes anticipated in the Pre-Feasibility or Feasibility study. Highlight and discuss the materiality of any unresolved matter that is dependent on a third party on which extraction of the reserve is contingent. 	<ul style="list-style-type: none"> MGO is an active mining project. CGO is an active mining project. FGO is an active mining project.



Criteria	JORC Code Explanation	Commentary
Classification	<ul style="list-style-type: none"> The basis for the classification of the Ore Reserves into varying confidence categories. Whether the result appropriately reflects the Competent Person's view of the deposit. The proportion of Probable Ore Reserves that have been derived from Measured Mineral Resources (if any). 	<ul style="list-style-type: none"> The basis for classification of the Resource into different categories is made in accordance with the recommendations of the JORC Code 2012. Measured Resources have a high level of confidence and are generally defined in three dimensions with accurately defined or normally mineralised developed exposure. Indicated resources have a slightly lower level of confidence but contain substantial drilling and are in most instances capitally developed or well defined from a mining perspective. Inferred resources always contain significant geological evidence of existence and are drilled, but not to the same density. There is no classification of any resource that isn't drilled or defined by substantial physical sampling works. Some Measured Resources have been classified as Proven and some are defined as Probable Reserves based on internal judgement of the mining, geotechnical, processing and or cost profile estimates. No Indicated Resource material has been converted into Proven Reserve. The resultant Reserve classification appropriately reflects the view of the Competent Person.
Audits or reviews	<ul style="list-style-type: none"> The results of any audits or reviews of Ore Reserve estimates. 	<ul style="list-style-type: none"> Reserves inventories and the use of appropriate modifying factors are reviewed internally on an annual basis. Additionally, mine design and cost profiles are regularly reviewed by WGX operational reviews. Financial auditing processes, Dataroom reviews for asset sales / purchases and stockbroker analysis regularly 'truth test' the assumptions made on Reserve designs and assumptions.
Discussion of relative accuracy/ confidence	<ul style="list-style-type: none"> Where appropriate a statement of the relative accuracy and confidence level in the Ore Reserve estimate using an approach or procedure deemed appropriate by the Competent Person. For example, the application of statistical or geostatistical procedures to quantify the relative accuracy of the reserve within stated confidence limits, or, if such an approach is not deemed appropriate, a qualitative discussion of the factors which could affect the relative accuracy and confidence of the estimate. The statement should specify whether it relates to global or local estimates, and, if local, state the relevant tonnages, which should be relevant to technical and economic evaluation. Documentation should include assumptions made and the procedures used. Accuracy and confidence discussions should extend to specific discussions of any applied Modifying Factors that may have a material impact on Ore Reserve viability, or for which there are remaining areas of uncertainty at the current study stage. It is recognised that this may not be possible or appropriate in all circumstances. These statements of relative accuracy and confidence of the estimate should be compared with production data, where available. 	<ul style="list-style-type: none"> Whilst it should be acknowledged that all Ore Reserves are based primarily upon an estimate of contained insitu gold (Resource), it is the competent person's view that the consolidated Reserve inventory is highly achievable in entirety. Given the entire Ore Reserves inventory is within existing operations, with Budgetary style cost models and current contractual mining / processing consumable rates, coupled with an extensive historical knowledge / dataset of the Resources, it is the competent person's view that the significant mining modifying factors (COG's, geotechnical parameters and dilution ratio's) applied are achievable and or within the limits of 10% sensitivity analysis.