

> A ONCE IN A DECADE WORLD-CLASS GOLD DISCOVERY

Bankan Maiden Resource Estimate

> FORWARD LOOKING STATEMENTS & DISCLAIMER

This presentation contains only a brief overview of Predictive Discovery Ltd and its associated entities (“PDI or Predictive”) and their respective activities. The contents of this presentation, including matters relating to the geology of the projects, may rely on various assumptions and subjective interpretations which it is not possible to detail in this presentation and which have not been subject to any independent verification.

This presentation contains a number of forward-looking statements. Known and unknown risks and uncertainties, and factors outside of Predictive’s control, may cause the actual results, performance and achievements of PDI to differ materially from those expressed or implied in this presentation.

To the maximum extent permitted by law, PDI does not warrant the accuracy, currency or completeness of the information in this presentation, nor the future performance of PDI, and will not be responsible for any loss or damage arising from the use of the information. The information contained in this presentation is not a substitute for detailed investigation or analysis of any particular issue. Current and potential investors and shareholders should seek independent advice before making any investment decision in regard to Predictive or its activities.

Competent Person Statement

The Mineral Resource estimates reported herein are based on information compiled by Mr Phil Jankowski, who is a member of The Australasian Institute of Mining and Metallurgy. Mr Jankowski is a full-time employee of CSA Global Pty Ltd and has sufficient experience relevant to the style of mineralisation and type of deposits being considered to qualify as a Competent Person as defined by the 2012 Edition of the Australasian Code for Reporting of Exploration Results, Mineral Resources and Ore Reserves. Mr Jankowski consents to the inclusion in the report of the matters based on his information in the form and context in which it appears.

The Company has released all material information that relates to Exploration Results on a continuous basis to ASX and in compliance with JORC 2012 . The Company confirms that it is not aware of any new information that materially affects the content of this release.

The exploration results reported herein are based on information compiled by Mr Paul Roberts (Fellow of the Australian Institute of Geoscientists). Mr Roberts is a full-time employee of the company and has sufficient experience relevant to the style of mineralisation and type of deposits being considered to qualify as a Competent Person as defined by the 2012 Edition of the Australasian Code for Reporting of Exploration Results, Mineral Resources and Ore Reserves. Mr Roberts consents to the inclusion in the report of the matters based on his information in the form and context in which it appears.

> AN EMERGING TIER-1 GOLD DISCOVERY STORY

Bankan's maiden Mineral Resource only the beginning of discovery journey

3.65 million ounces

Inferred Mineral Resource of
72.8 million tonnes at 1.56g/t Au

High-grade zone

recently discovered, presents
significant potential for further
growth

A\$4.0/oz = US\$2.9/oz

Resource discovery cost per ounce

Metallurgical Work

Scoping study-level metallurgical
testwork has been very promising with
no recovery issues identified

17 months

since NE Bankan discovery
drillholes

356km²

in an emerging world-class gold
discovery hotspot, Guinea's Siguiri Basin

> BANKAN MAIDEN RESOURCE ESTIMATE

Includes NE Bankan and Bankan Creek Deposits

Cutoff	Tonnes	Grade Au g/t	Contained Au ounces
0.3	90,262,257	1.33	3,864,058
0.4	80,608,698	1.45	3,758,532
0.5	72,797,773	1.56	3,645,525
0.6	66,247,864	1.66	3,529,957
0.7	58,248,230	1.8	3,363,101
0.8	51,561,077	1.93	3,204,003
0.9	45,000,505	2.09	3,024,860
1.0	38,235,152	2.29	2,818,224
1.1	31,860,352	2.54	2,605,071
1.2	27,294,936	2.78	2,437,740
1.3	23,167,280	3.05	2,271,925
1.4	19,417,423	3.38	2,109,243
1.5	16,397,260	3.74	1,969,418
1.6	14,350,723	4.05	1,868,090
1.7	12,798,629	4.34	1,786,231
1.8	11,477,882	4.64	1,712,319
1.9	10,378,241	4.94	1,647,267
2.0	9,352,369	5.27	1,583,281

Deposit	Weathering	Million Tonnes	Grade Au g/t	'000 Contained Au ounces
NE Bankan	Laterite	2.15	0.97	67
	Saprolite	11.54	1.08	401
	Primary	51.87	1.71	2,852
Bankan Creek	Laterite	0.15	1.04	5
	Saprolite	1.01	1.83	59
	Primary	6.08	1.37	268
Total	Inferred	72.80	1.56	3,646

Notes:

- See page 24 for complete Resource Table and Competent Person notes
- Rounding may lead to minor apparent discrepancies.
- Reported as an *in situ* undiluted Resource at a 0.5 g/t Au cut-off grade within a US\$1,800/oz optimised pit shell
- All reported Mineral Resource ounces are in the Inferred Resource category
- High retention of contained gold ounces as the cut-off grade is lifted, demonstrating a robust ore body.
- Includes drillholes BNERD0090 & BNERD0091 - ASX Ann. 16th Sept 2021

> BANKAN PROJECT PLAN VIEW

BANKAN PROJECT LOCATION PLAN

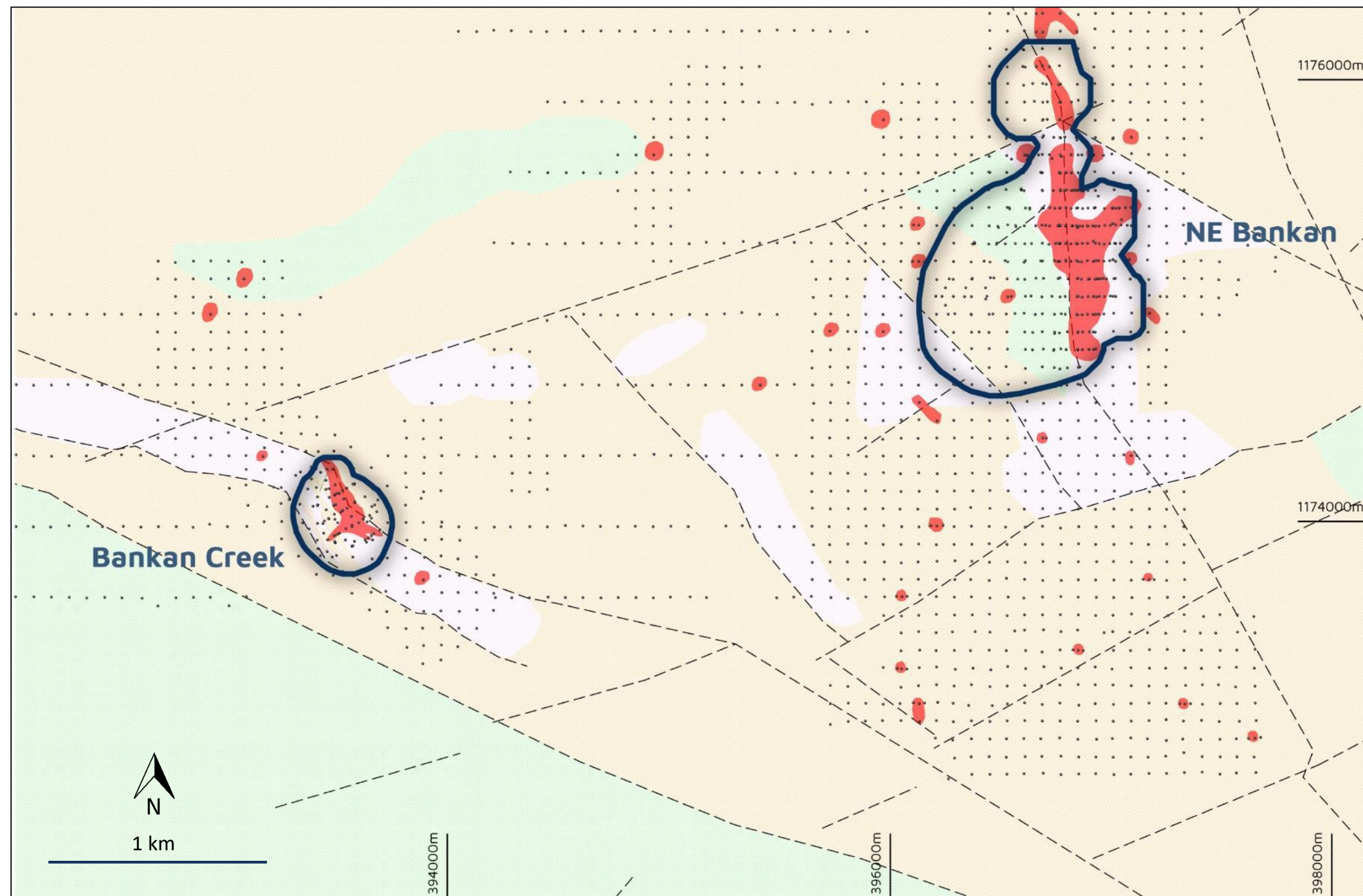
- Drilling
- Pit Outline

Auger Gold Anomalies

- > 0.1 g/t Au
- > 0.25 g/t Au

Geology

- Felsic Intrusive
- Metasediment / Metavolcanic
- Mafic Igneous
- Interpreted Structures

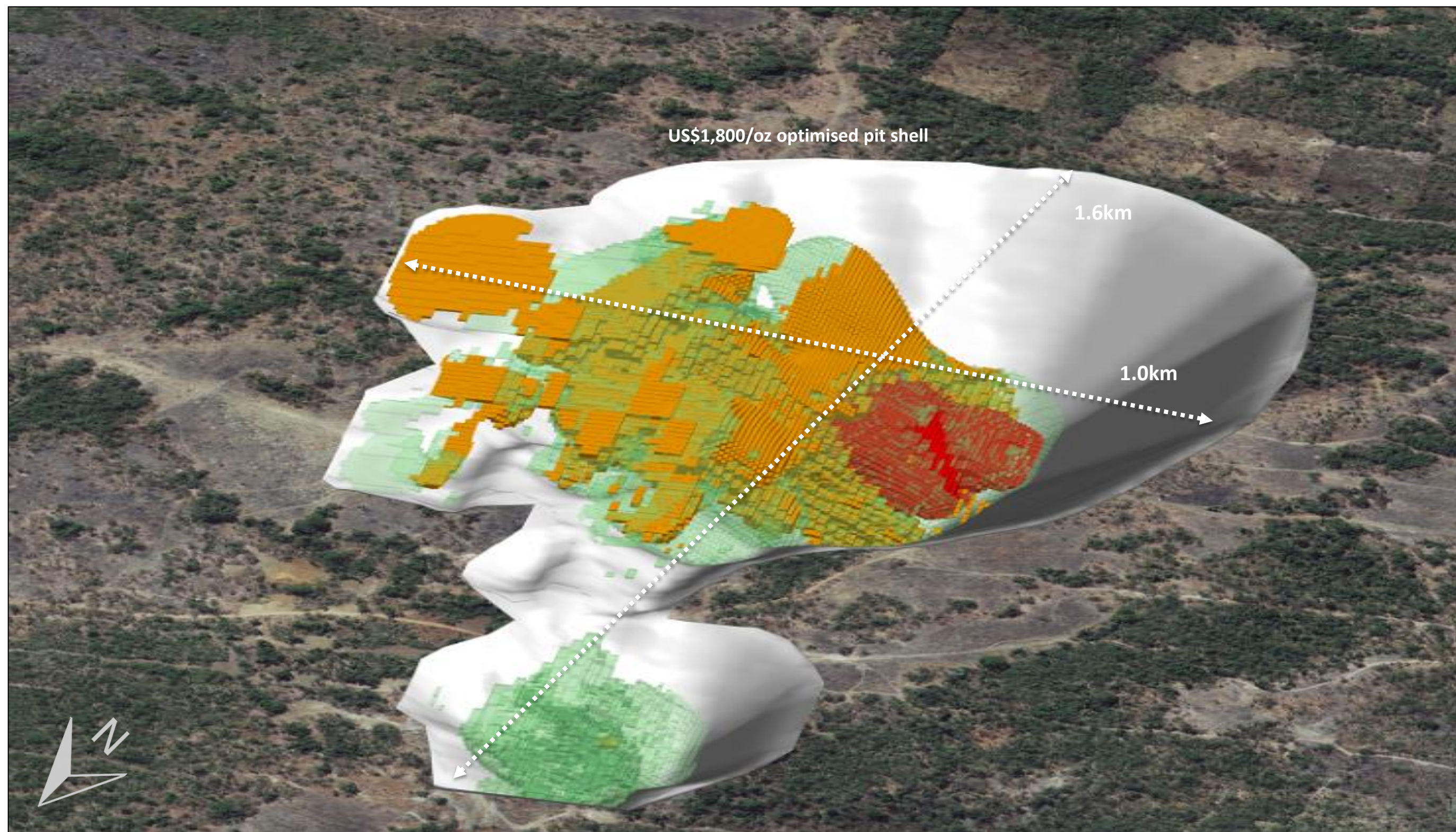


> NE BANKAN PERSPECTIVE VIEW

RESOURCE BLOCK MODEL

Legend

- > 3.0/t Au
- 1.0 – 3.0g/t Au
- 0.5 – 1.0g/t Au



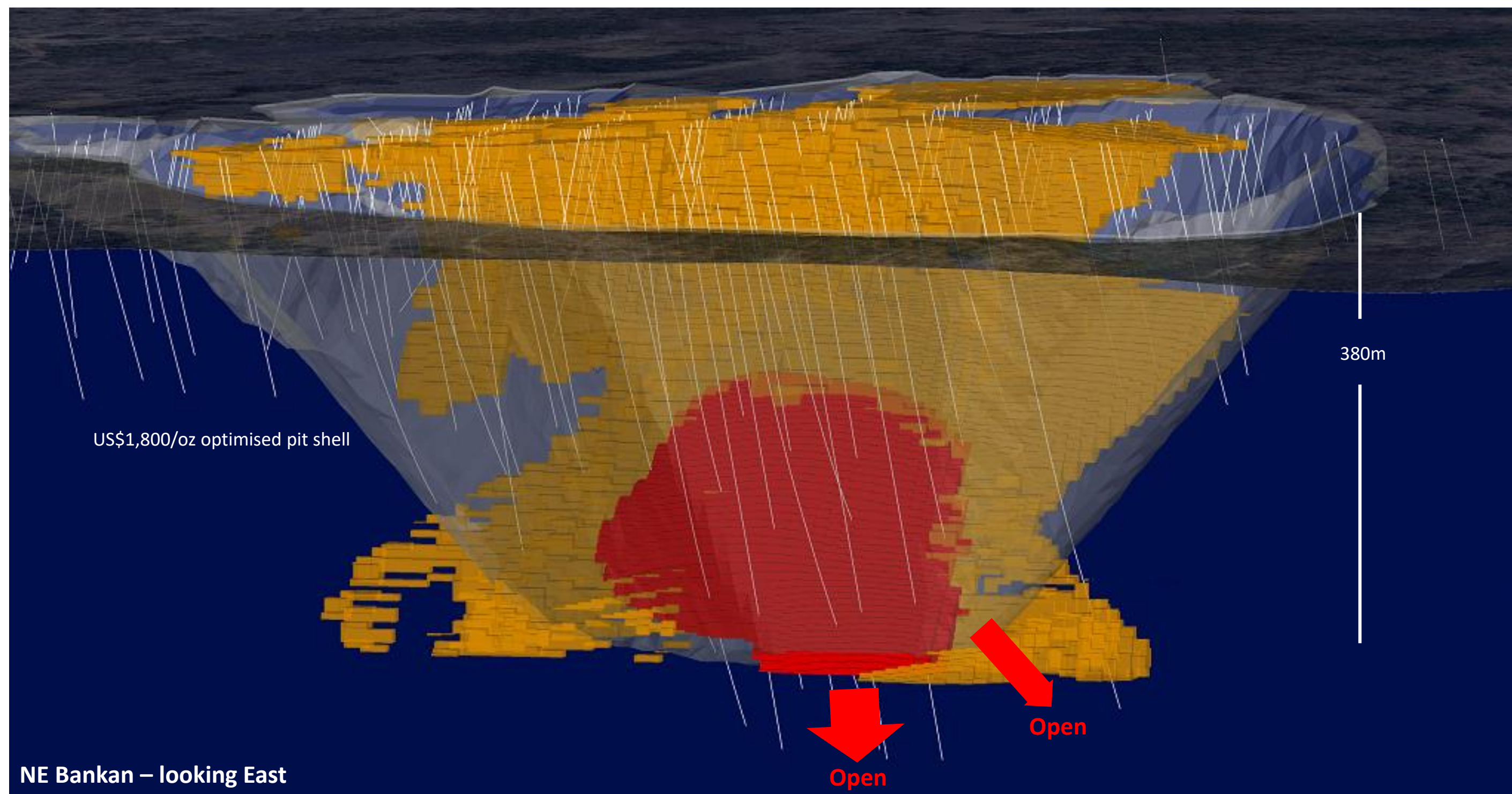
> NE BANKAN'S HIGH GRADE CORE

Outstanding mineralisation continuity at higher cut-off grades

RESOURCE BLOCK MODEL

Legend

- > 3.0g/t Au
- 1.0 – 3.0g/t Au



> METALLURGICAL TESTWORK

Scoping study-level testwork has delivered excellent initial results

Sample	Lithology	Assay Head (g/t Au)	Leach Extraction (%)		Cyanide consumption (kg/t)	Lime consumption (kg/t)
			12 hour	24 hour		
Comp A	Altered tonalite (high-grade)	2.79	96.7%	98.5%	1.13	0.00
MT001 and MT010	Altered tonalite (low-grade)	1.20	91.4%	98.4%	1.05	0.00
MT007 and MT008	Skarn, marble, tonalite, vein quartz	1.71	89.0%	95.8%	0.88	0.00
MT011	Mafic volcanics	2.04	95.7%	98.0%	1.19	0.00
Comp B	Weathered saprolite	1.00	88.9%	94.2%	1.57	0.30

- Free milling gold
- 94.2-98.5% gold recoveries under standard conditions (75-micron grind, 24 hours)
- Gravity gold recoveries of 19.6% to 37% in main hard rock ore types
- Ore suitable for conventional processing plant

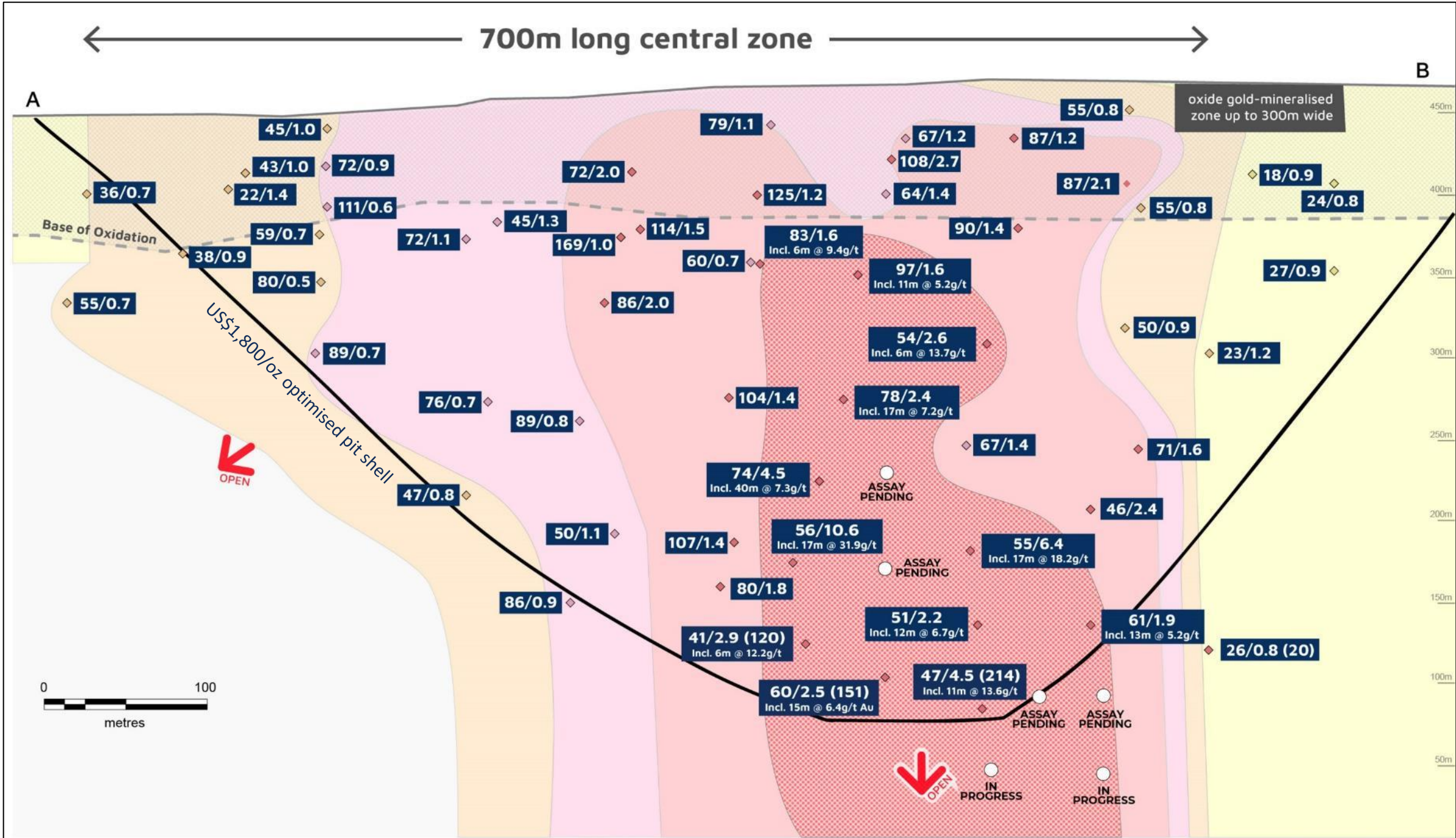
> ADDING OUNCES

Bankan's gold exploration story is just beginning....

For personal use only

NE BANKAN DEPOSIT LONGITUDINAL PROJECTION

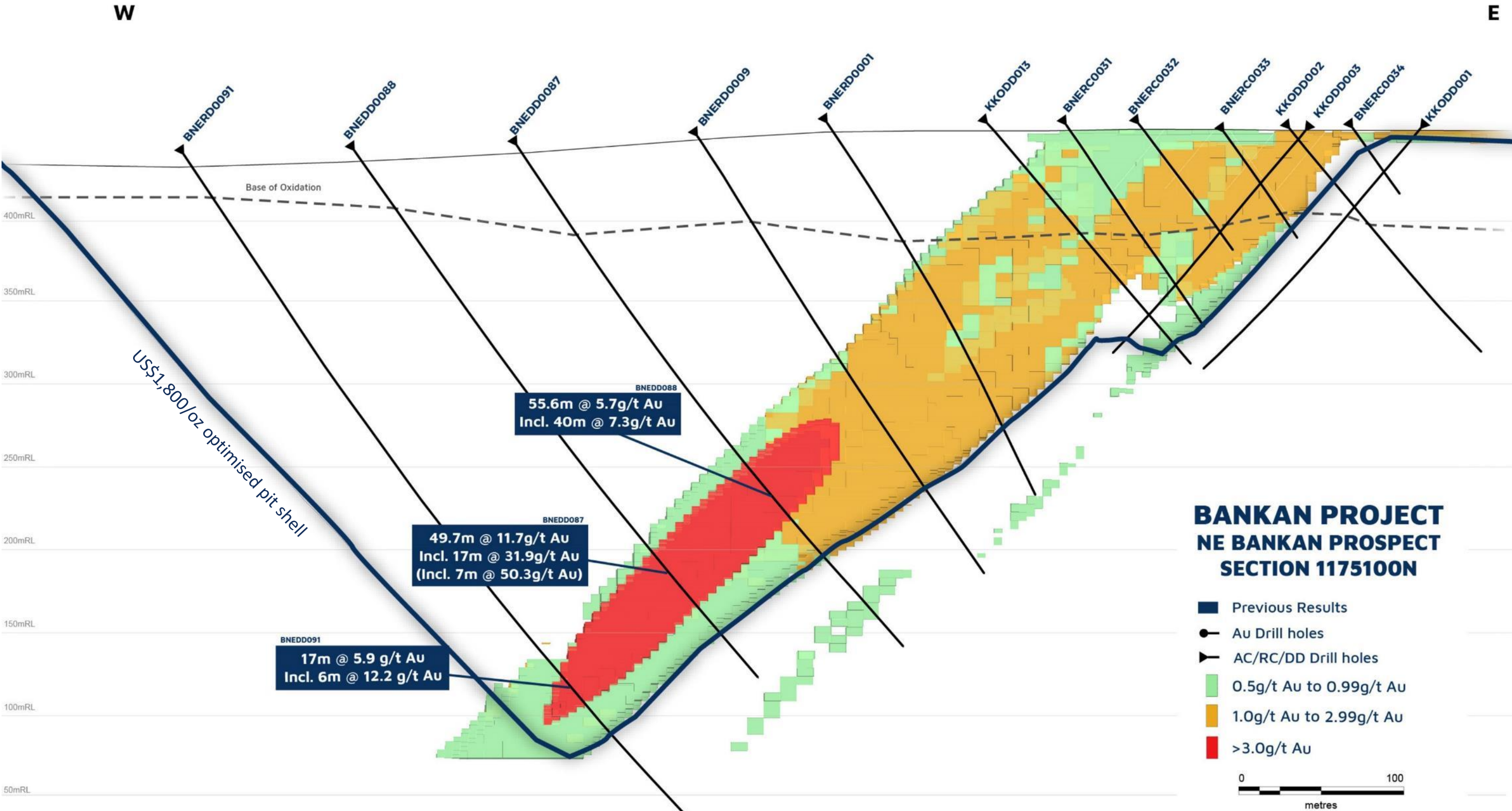
- ◆ <25 g*m ◆ 50-100 g*m
- ◆ 25-50 g*m ◆ >100 g*m
- Hole's Pending
- Oxide Gold-Mineralised Zone
- <25 g*m 50-100 g*m
- 25-50 g*m >100 g*m
- > 50g*m (1g/t cutoff | >5g/t ave. grade)



• Projected to a vertical plane orientated NNW.
• Results legend: 70/1.0 (70) = 70m (aggregate true widths within the gold mineralised envelope) with length weighted average grade of 1.0g/t Au. Aggregate true width x grade in brackets.
• Intercept values shown = aggregate of true width reported intercepts (0.25g/t Au cutoff grade) excluding intercepts averaging <0.5g/t Au.
• The holes plotted are RC/DD and DD holes drilled from west to east. The majority of gold intercepts in the upper weathered (oxidised) surface layer were obtained in east to west drilling from which true widths cannot be estimated. In addition gold intercepts in the weathered zone extend over a greater lateral width than the gold mineralised envelope in fresh rock.

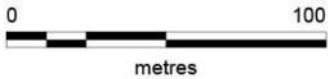
BANKAN PROJECT

Cross Section 1175100N – block model



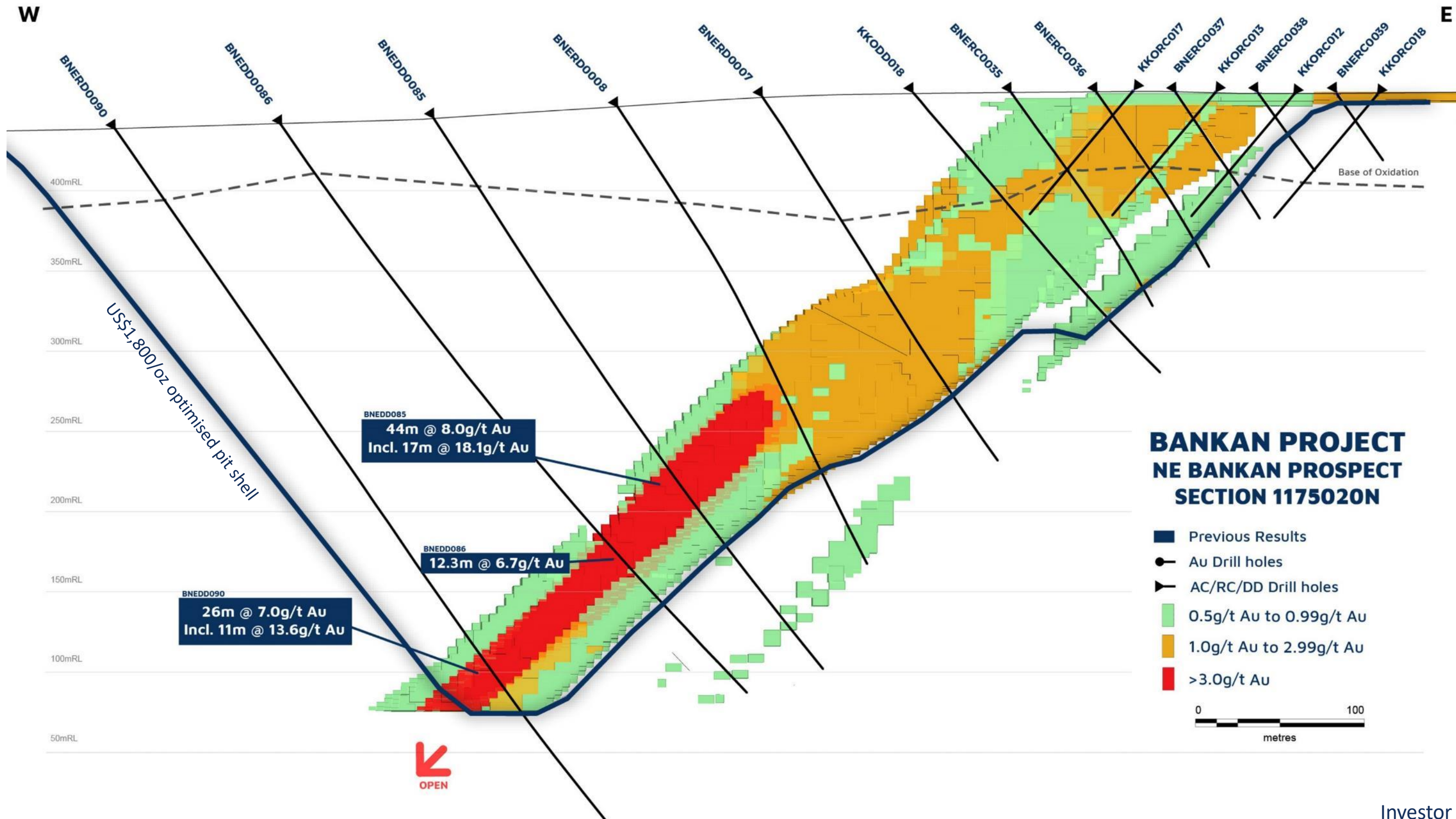
**BANKAN PROJECT
NE BANKAN PROSPECT
SECTION 1175100N**

- Previous Results
- Au Drill holes
- AC/RC/DD Drill holes
- 0.5g/t Au to 0.99g/t Au
- 1.0g/t Au to 2.99g/t Au
- >3.0g/t Au



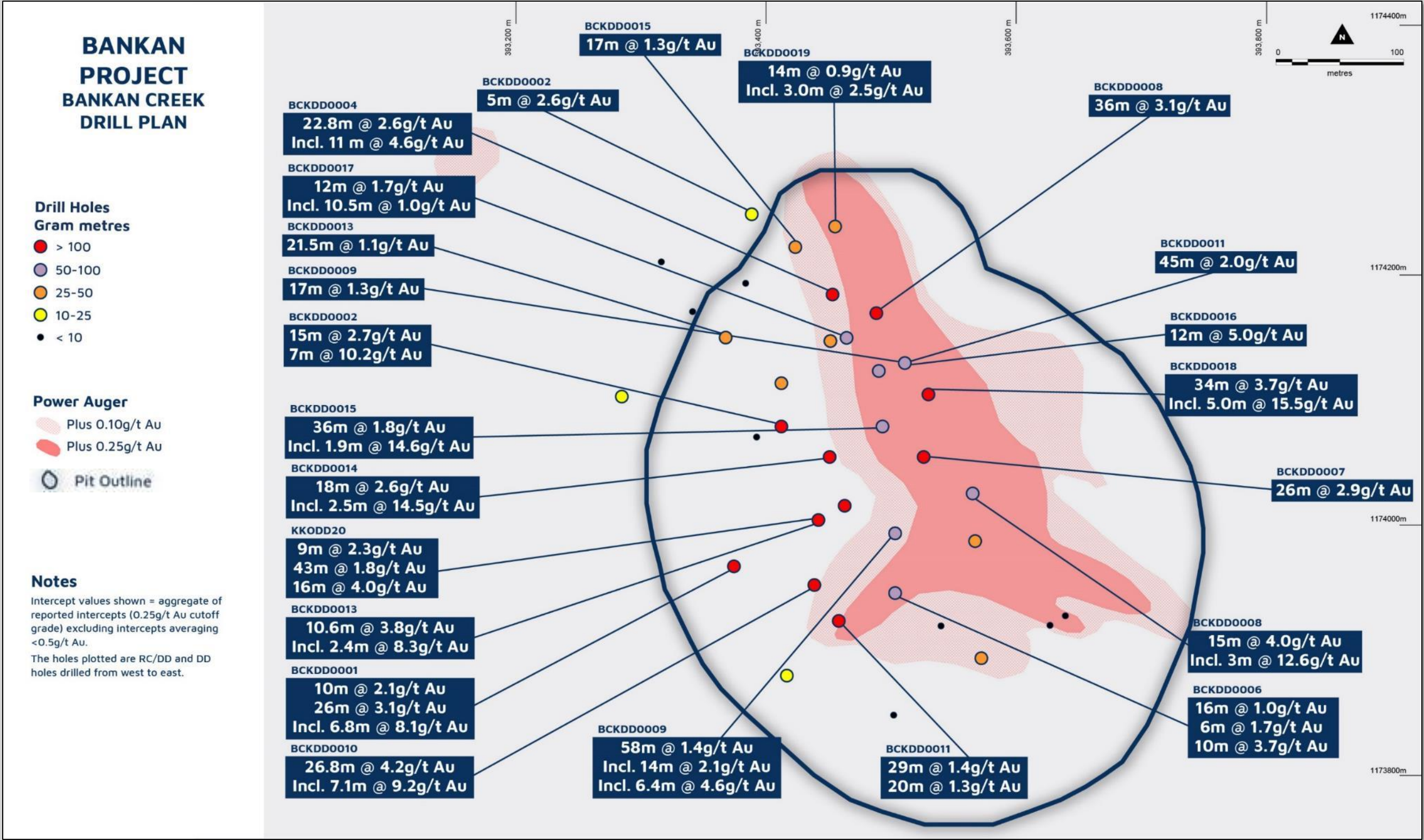
BANKAN PROJECT

Cross Section 1175020N – block model



BANKAN CREEK

Only 3km west of the NE Bankan discovery



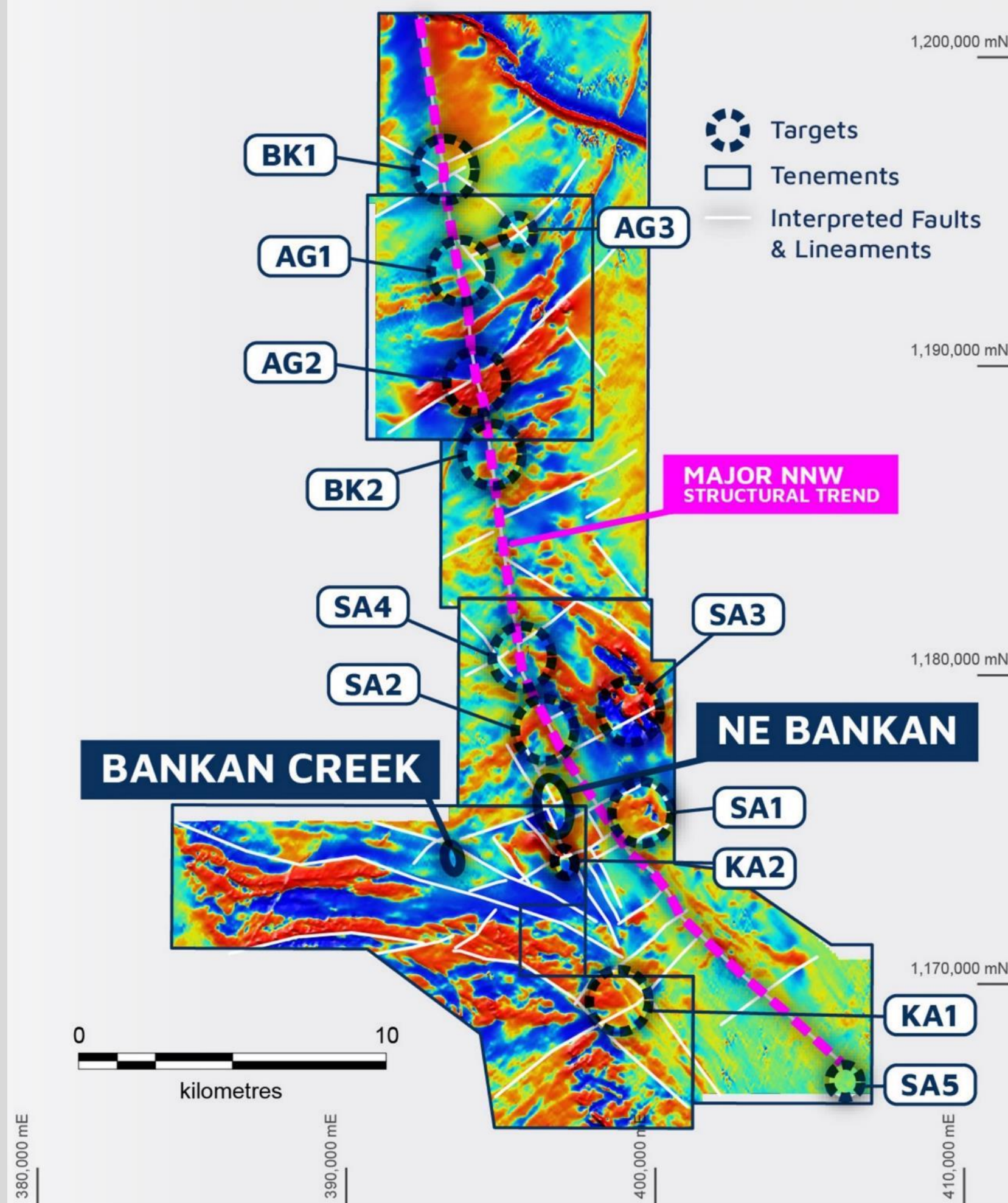
> ADDING
OUNCES

ROOM TO GROW

35km-long gold corridor has potential to host numerous large gold deposits

AEROMAG DELIVERS 12 HIGH-VALUE DRILL TARGETS

- Targets are located on interpreted ENE faults, crosscutting a newly recognised major 35km-long NNW structural corridor
- Structural corridor has potential to host numerous “NE Bankan-style” discoveries
- Lithological and structural elements controlling gold mineralisation at NE Bankan have provided a new model for gold discovery



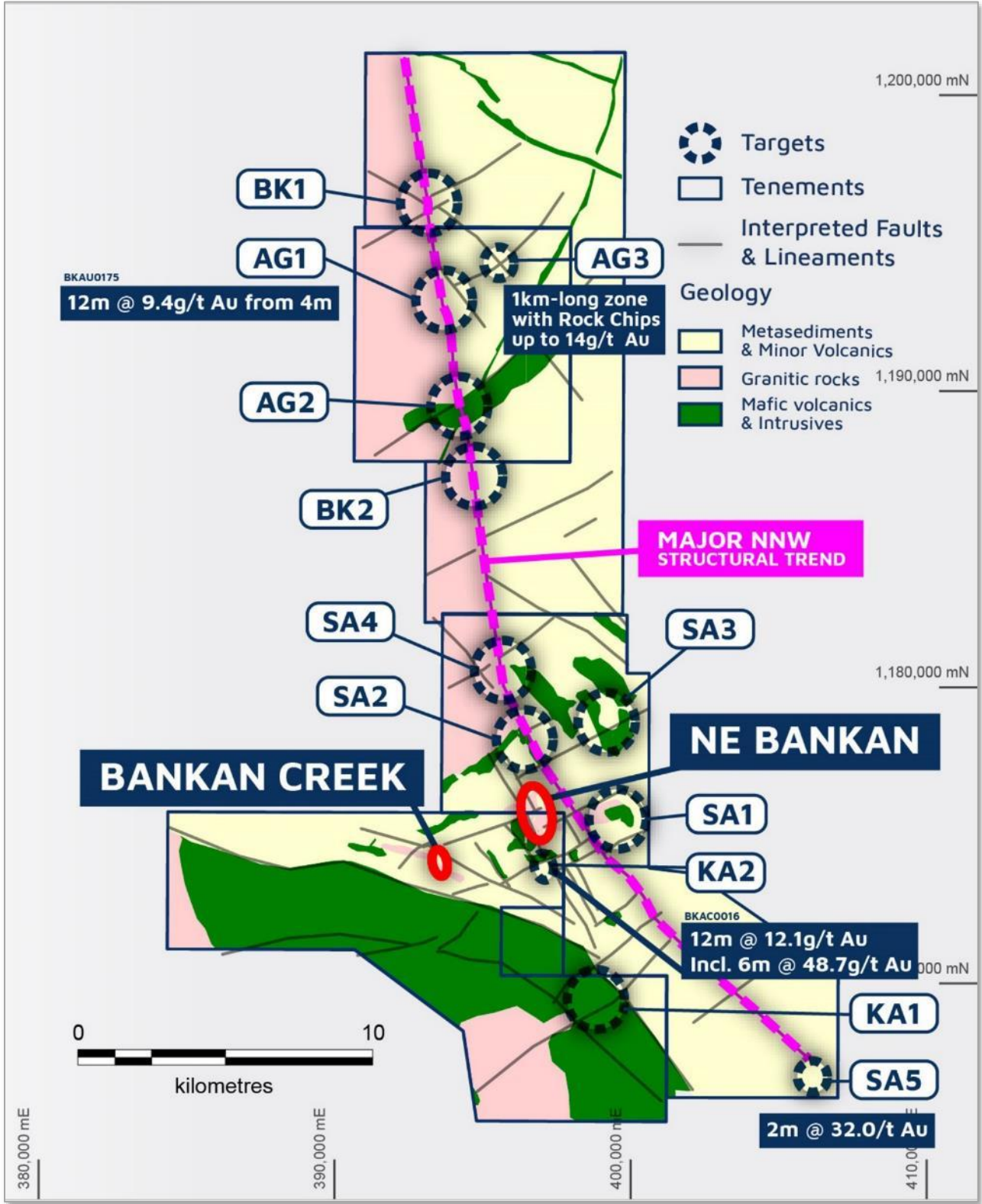
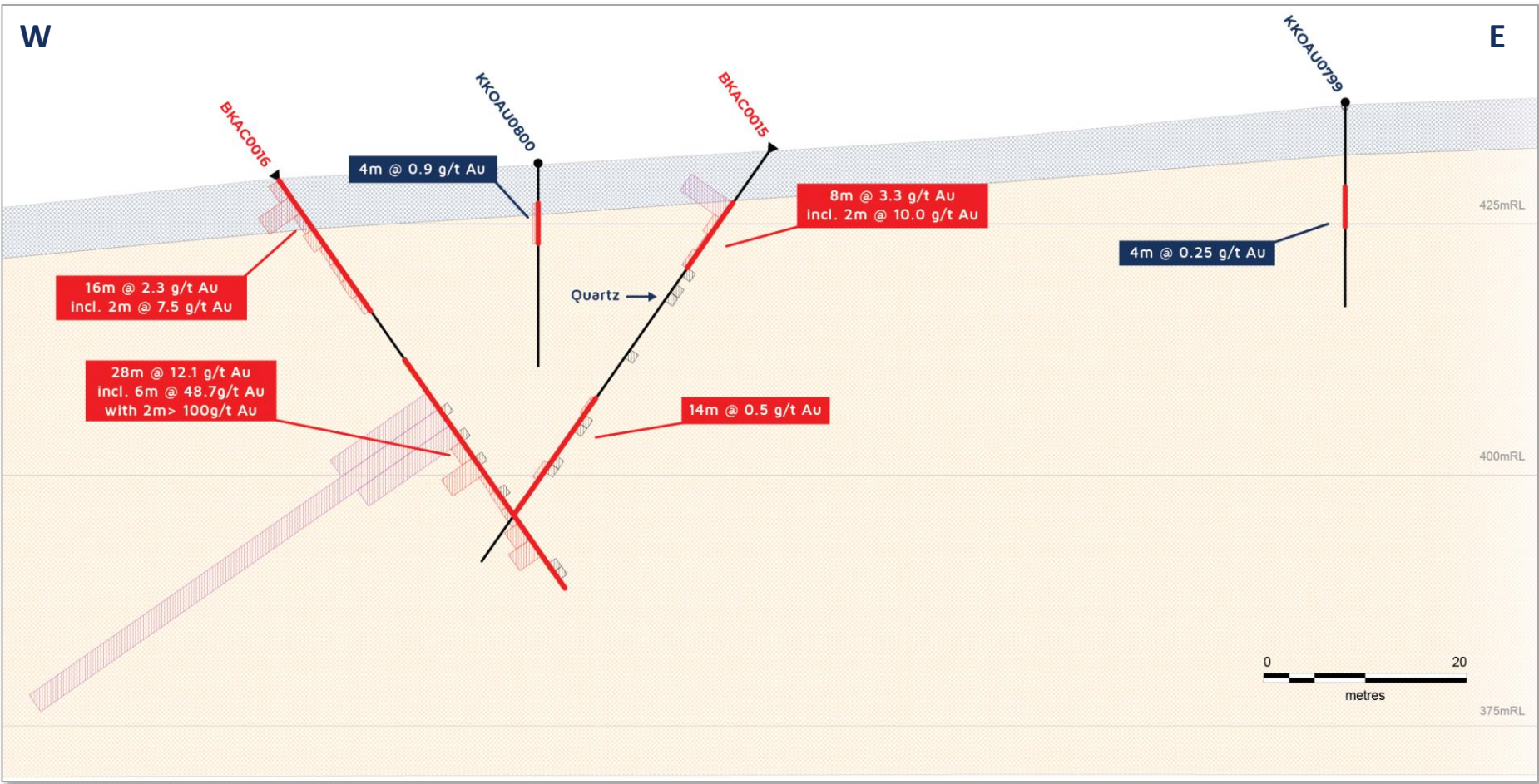
For personal use only

DISCOVERED BY DESIGN

Disciplined strategy and technical rigour rewarded with new discoveries



- Major NNW structural trends delivers widespread gold e.g. from shallow power auger drilling at AG1
- Power auger continues to make new discoveries from other structural targets, with KA2 a shallow new gold discovery
- Numerous targets yet to be tested
- Aggressive power auger and aircore drilling to continue in the next 12 months



> KOUNDIAN PROJECT

Promising early exploration with no deep drilling completed



For personal use only

Promising Prospect

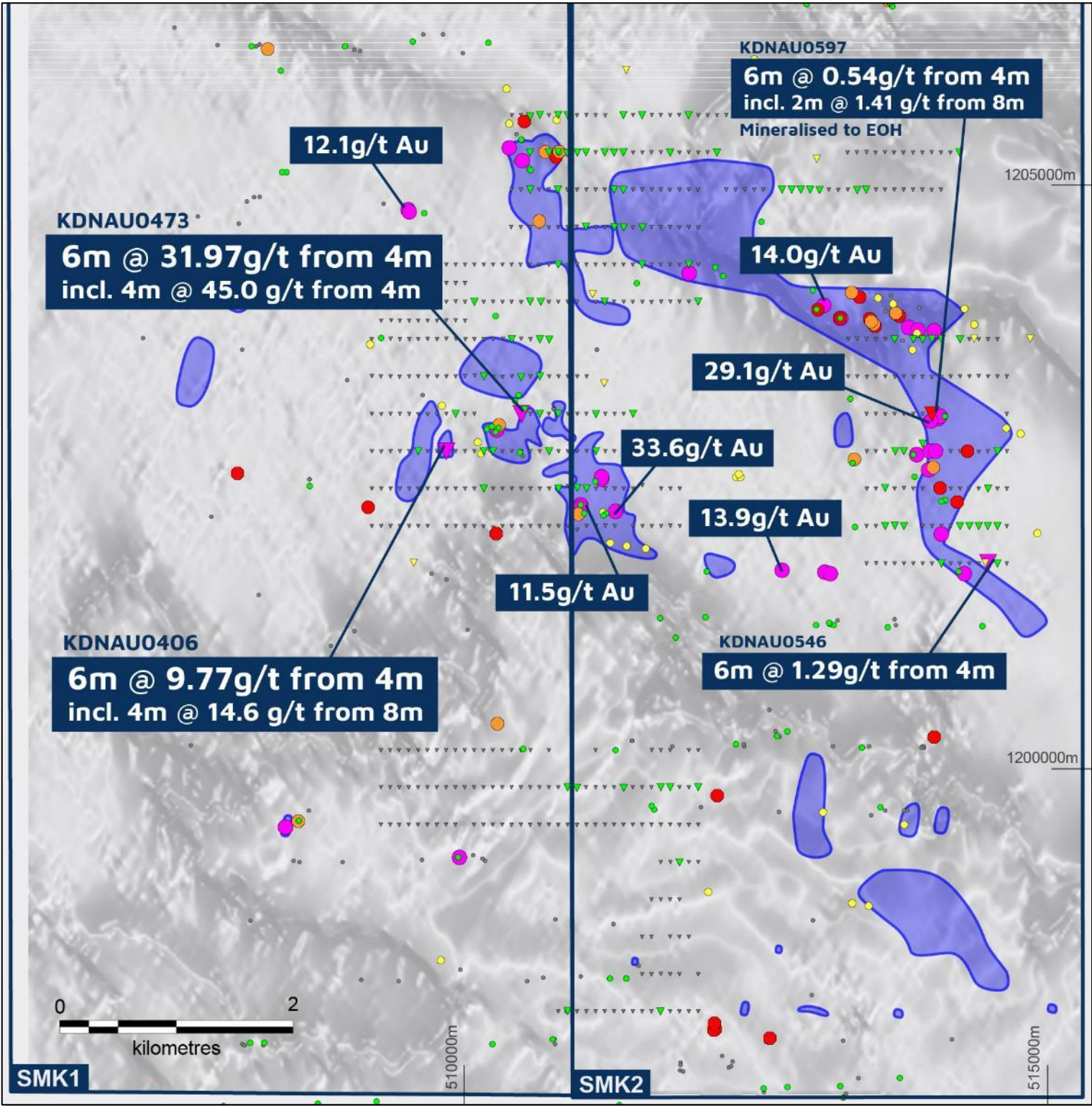
- Strategically located along strike from the Managem Group's 2Moz Tri-K gold deposits
- Power auger drilling has returned shallow high-grade gold along a corridor of interpreted NE orientated structures
- New exploration programs (in upcoming dry season) to fully realise project value

KOUNDIAN PROJECT ROCK CHIP & AUGER DRILLING

Legend

- Tenements
- Artisanal Workings

Power Auger	g/t Au	Rock Chips
▼	>1	●
▼	0.5 - 1	●
▼	0.25 - 0.5	●
▼	0.01 - 0.25	●
▼	0.025 - 0.1	●
▼	<0.025	●



> PREDICTIVE CONTROLS 356km²

Strategically located on the western margin of the Siguiri Basin along a major regional structure



> ADDING
OUNCES

GOLD DISCOVERY IS IN OUR DNA

Supported by African-focused corporate and finance executives



For personal use only



PAUL ROBERTS
BSc, MSc, FAIG

Managing Director
Paul is a geologist with 11 years experience working in West Africa and is associated with a number of discoveries including the Henty gold deposit in Tasmania, and the PDI Bankan discovery.

FRANCIS HARPER

Non-Executive Chairman
Currently Chairman and major shareholder of Tietto (ASX: TIE) and founder and co-owner of Blackwood Capital, which has raised over \$A1B for mining and industrial stocks since founding. He was formerly Chairman and major shareholder of West African Resources (ASX: WAF)

ANDREW PARDEY

Non-Executive Director
Formerly CEO of LSE/TSX listed Centamin plc, the owner of the 450koz pa Sukari Mine. A geologist with extensive mine and development experience in North and West Africa. Currently Chairman of Tanga Resources Limited (ASX: TRL) and non-executive director of Marvel Gold Limited (ASX: MVL)

STEVEN MICHAEL

Non-Executive Director
Steven has over 25 years' experience in the global resources sector specialising in corporate finance and equity capital markets. Currently Non-Executive Director of Tanga Resources Limited (ASX: TRL)

BARRY MURPHY
B.A, Hons, Ph.D

Chief Geologist
Barry is a structural geologist with 10+ years experience working in West Africa with experience in Australia, Sudan, DRC, South America, Indonesia and Europe. Barry played a major role in the regional targeting work that led to the Kaninko discovery.

AIME NGANARE
MSc, MBA

Principal Geologist
Aimé has over 18 years of experience in orogenic gold exploration in Central and West Africa, including his role as General Manager of the Geological Survey of the Central African Republic.

> CAPITAL STRUCTURE

Well funded and fully supported by our world-class corporate and technical partners

SHARES
ON ISSUE

1,350m

CASH

A\$24m

MKT CAP
(A\$0.16)

A\$208m

ANALYST COVERAGE

Sprott | Capital Partners

EUROZ
HARTLEYS

 ARGONAUT

cg/Canaccord
Genuity

TOP SHAREHOLDERS

11% Capital DI limited

5% Van Eck

5% Franklin Templeton

4% Lowell Resources Fund

TECHNICAL PARTNERS



STRENGTHENING OUR RELATIONSHIPS

with the Bankan communities



For personal use only

> **Bankan Women’s Agricultural Program**

Improving the living conditions and empowering the women of Bankan Village and Kouroussa through development of market gardens.

> **Children’s School Program**

Donation of school supplies to five schools located within the Bankan Gold Project exploration permits.

> **Environmental and Social Baseline Studies**

Company is undertaking initial social and environmental studies with West African-based consultants.

> NEXT 12 MONTHS

Continuous focus on exploration and discovery

OUR FOCUS IS ALL ABOUT MAKING **NEW DISCOVERIES** AND **ADDING OUNCES**

The Bankan gold story is just beginning

Resource confirms Bankan as a major new discovery

Ramping up exploration

Ongoing gold discovery in new high-grade areas, regional targets and Bankan Creek

Funded for success

Fully funded treasury to be deployed for aggressive expansion of drill programs

For further information contact:

PAUL ROBERTS

Managing Director

Phone: +61 402 857 249

Email: paul.roberts@predictivediscovery.com

CHRIS SWALLOW

Corporate Development

Phone: +61 412 174 882

Email: chris.swallow@predictivediscovery.com

predictivediscovery.com

ASX:PDI

> BANKAN MINERAL RESOURCE ESTIMATE

Full table and totals

NE BANKAN				BANKAN CREEK				TOTALS			
Cutoff Au g/t	Tonnes	Grade Au g/t	Contained Au ounces	Cutoff Au g/t	Tonnes	Grade Au g/t	Contained Au ounces	Cutoff Au g/t	Tonnes	Grade	Ounces
0	95,515,657	1.18	3,614,576	0	8,964,356	1.22	352,706	0	104,480,013	1.18	3,967,282
0.1	94,847,388	1.18	3,613,287	0.1	8,964,356	1.22	352,706	0.1	103,811,744	1.19	3,965,993
0.2	92,422,238	1.21	3,600,811	0.2	8,952,028	1.23	352,639	0.2	101,374,266	1.21	3,953,450
0.3	81,552,613	1.34	3,513,445	0.3	8,709,644	1.25	350,613	0.3	90,262,257	1.33	3,864,058
0.4	72,373,263	1.47	3,413,103	0.4	8,235,435	1.3	345,429	0.4	80,608,698	1.45	3,758,532
0.5	65,562,063	1.57	3,314,560	0.5	7,235,710	1.42	330,965	0.5	72,797,773	1.56	3,645,525
0.6	59,801,863	1.67	3,212,702	0.6	6,446,001	1.53	317,255	0.6	66,247,864	1.66	3,529,957
0.7	52,796,432	1.81	3,066,303	0.7	5,451,798	1.69	296,798	0.7	58,248,230	1.8	3,363,101
0.8	46,792,763	1.94	2,923,466	0.8	4,768,314	1.83	280,537	0.8	51,561,077	1.93	3,204,003
0.9	40,682,038	2.11	2,756,472	0.9	4,318,467	1.93	268,388	0.9	45,000,505	2.09	3,024,860
1	34,282,544	2.32	2,561,011	1	3,952,608	2.02	257,213	1	38,235,152	2.29	2,818,224
1.1	28,568,657	2.58	2,369,957	1.1	3,291,695	2.22	235,114	1.1	31,860,352	2.54	2,605,071
1.2	24,358,938	2.83	2,215,663	1.2	2,935,998	2.35	222,077	1.2	27,294,936	2.78	2,437,740
1.3	20,447,057	3.13	2,058,450	1.3	2,720,223	2.44	213,475	1.3	23,167,280	3.05	2,271,925
1.4	16,928,938	3.5	1,905,752	1.4	2,488,485	2.54	203,491	1.4	19,417,423	3.38	2,109,243
1.5	14,110,569	3.91	1,775,269	1.5	2,286,691	2.64	194,149	1.5	16,397,260	3.74	1,969,418
1.6	12,202,457	4.28	1,680,795	1.6	2,148,266	2.71	187,295	1.6	14,350,723	4.05	1,868,090
1.7	10,716,457	4.65	1,602,442	1.7	2,082,172	2.75	183,789	1.7	12,798,629	4.34	1,786,231
1.8	9,477,313	5.03	1,533,121	1.8	2,000,569	2.79	179,198	1.8	11,477,882	4.64	1,712,319
1.9	8,499,369	5.4	1,475,269	1.9	1,878,872	2.85	171,998	1.9	10,378,241	4.94	1,647,267
2	7,576,600	5.82	1,417,713	2	1,775,769	2.9	165,568	2	9,352,369	5.27	1,583,281

Notes to Resource table:

1. The Mineral Resource is estimated with all drilling data available at 11th September 2021. Drillholes BNERD0090 and BNERD0091(reported to ASX on 16 September 2021) were included in the resource database.
2. The Mineral Resource is reported in accordance with the JORC Code 2012 Edition at a 0.5g/t cut-off.
3. The Competent Person is Phil Jankowski MAusIMM (CP) of CSA Global.
4. The Mineral Resources are constrained by optimised pit shells using a metal price of USD1,800 per ounce Au and process recovery of 94%.
5. Rounding may lead to minor apparent discrepancies.

MATERIAL ASX RELEASES



28M @ 12.1G/T GOLD 1.5 KM FROM NE BANKAN, 23/09/2021
HIGH-GRADE GOLD ZONE CONFIRMED UP TO 400M VERTICAL DEPTH, 16/09/2021
EXCELLENT GOLD RECOVERIES FROM BANKAN METALLURGICAL TESTWORK, 24/08/2021
STRONG WIDTHS AND GRADES FROM BANKAN CREEK RESOURCE DRILLING, 24/08/2021
MORE BROAD WIDTHS AND HIGH-GRADES FROM BANKAN DRILLING, 2/08/2021
BONANZA GOLD GRADES AS HIGH-GRADE ZONE IS REVEALED AT BANKAN, 19/07/2021
44M @ 8G/T GOLD, HIGHEST IMPACT GOLD INTERCEPT AT BANKAN, 1/07/2021
BROAD GOLD INTERCEPTS FROM BANKAN CREEK AND NE BANKAN, 17/06/2021
NE BANKAN EXTENDS TO DEPTH WITH STRONG GOLD GRADES, 3/06/2021
6M AT 32G/T GOLD FROM FIRST DRILLING AT KOUNDIAN, GUINEA, 31/05/2021
WIDESPREAD & HIGH-GRADE GOLD FROM BANKAN REGIONAL AUGER, 13/05/2021
NE BANKAN CENTRAL GOLD ZONE EXTENDING TO SOUTH AT DEPTH, 6/05/2021
BANKAN AEROMAG MANY NEW DRILL TARGETS ALONG 35KM STRUCTURE, 28/04/2021
NE BANKAN GOLD MINERALISATION SUBSTANTIALLY EXTENDS AT DEPTH, 15/04/2021
NE BANKAN GROWS TO 300M WIDE. HIGH GRADE GOLD FROM SURFACE, 31/03/2021
EXCEPTIONALLY HIGH GRADES, THICK INTERCEPTS FROM NE BANKAN, 15/03/2021
SUBSTANTIAL OXIDE GOLD ZONE EMERGING AT NE BANKAN PROJECT, 5/03/2021
MORE DEPTH EXTENSIONS FROM DRILLING BANKAN GOLD DISCOVERIES, 25/02/2021
HIGH GRADE DRILL RESULTS EXTEND BANKAN CK DISCOVERY TO NORTH, 11/02/2021
OUTSTANDING, WIDE GOLD INTERCEPT GROWS BANKAN AT DEPTH, 28/01/2021
BANKAN GOLD PROJECT DRILLING ACCELERATED, 22/01/2021
DIAMOND DRILLING UNDERWAY AT BANKAN GOLD PROJECT, 17/12/2020
EXPLORATION UPDATE - BANKAN GOLD PROJECT, GUINEA, 27/11/2020
EXPLORATION UPDATE - BANKAN-2 GOLD DRILLING UNDERWAY, 20/10/2020
92M AT 1.9G/T GOLD - DIAMOND DRILLING EXPANDS BANKAN PROJECT, 13/10/2020
NE BANKAN GOLD DEPOSIT GROWS WITH MORE STRONG DRILL RESULTS, 25/09/2020

ADDITIONAL PERMITS ALONG STRIKE FROM FLAGSHIP BANKAN PROJECT, 17/09/2020
55M AT 2.94G/T GOLD-BROAD TRUE WIDTHS CONFIRMED AT BANKAN, 10/09/2020
NE BANKAN NOW 1.6KM LONG WITH POSSIBLE PARALLEL GOLD ZONE, 3/09/2020
BANKAN CREEK GOLD ZONE FURTHER EXPANDED, 27/08/2020
STRONG WIDE GOLD INTERCEPTS FROM BANKAN CREEK AND NE BANKAN, 19/08/2020
OUTSTANDING HIGH-GRADE GOLD RESULTS FROM NE BANKAN, GUINEA, 7/08/2020
DIAMOND DRILLING CONFIRMS GOLD AT DEPTH AT NE BANKAN, GUINEA, 31/07/2020
IMPRESSIVE 1ST RC DRILL RESULTS GROW NE BANKAN DISCOVERY, 17/07/2020
NE BANKAN DISCOVERY GUINEA EXTENDED 30% TO 1.3KM IN LENGTH, 30/06/2020
SAMAN EXPLORATION PERMIT GRANTED, 19/06/2020
PDI WEST AFRICAN EXPLORATION UPDATE 7 DRILL RIGS ACTIVE, 9/06/2020
KANINKO AUGER RESULTS DOUBLE GOLD-MINERALISED STRIKE LENGTH, 27/05/2020
UPDATE ON ASSAY RESULTS KANINKO PROJECT GUINEA, 25/05/2020
DRILLING UPDATE - KANINKO PROJECT, GUINEA, 7/05/2020
FINAL DRILL RESULTS, BANKAN CREEK, KANINKO PROJECT, GUINEA, 30/04/2020
44M AT 2.06G/T GOLD FROM BANKAN CREEK, KANINKO, GUINEA, 27/04/2020
POWER AUGER DRILLING UNDERWAY AT KANINKO GOLD PROJECT, 24/04/2020
DIAMOND DRILLING EXTENDS GOLD MINERALISATION AT OUARIGUE CDI, 16/04/2020
OUTSTANDING DRILL RESULTS FROM NEW GOLD DISCOVERY IN GUINEA, 15/04/2020
GUINEA GROUND ACQUIRED NEAR PLUS-2 MILLION OZ GOLD DEPOSITS, 7/04/2020
AC-RC DRILLING UNDERWAY IN GUINEA, ACCELERATING EXPLORATION, 24/03/2020
HIGH-GRADES-BROAD WIDTHS FROM GUINEA AUGER-TRENCHING PROGRAM, 19/03/2020
UP TO 8G/T GOLD FROM POWER AUGER DRILLING IN GUINEA, 26/02/2020