



RRS Conference Perth October 2021

TERRY TOPPING – EXECUTIVE CHAIRMAN

KAIROS
MINERALS

Corporate Summary

ASX	Shares on Issue	Options on Issue KAI OG	Unlisted Options on Issue	Share Price	Market Cap	12-Month Range	Cash and liquid assets on hand
KAI	1,675M	285M	248M	3.0cps	50M	1.0-9.1c	~\$8.3M *

BOARD OF DIRECTORS		
Terry Topping Executive Chairman	Bruno Seneque Chief Financial Officer	Neil Hutchison Non-executive Director

* 30 June 2021



Field Exploration 2021

➤ Mount York Project

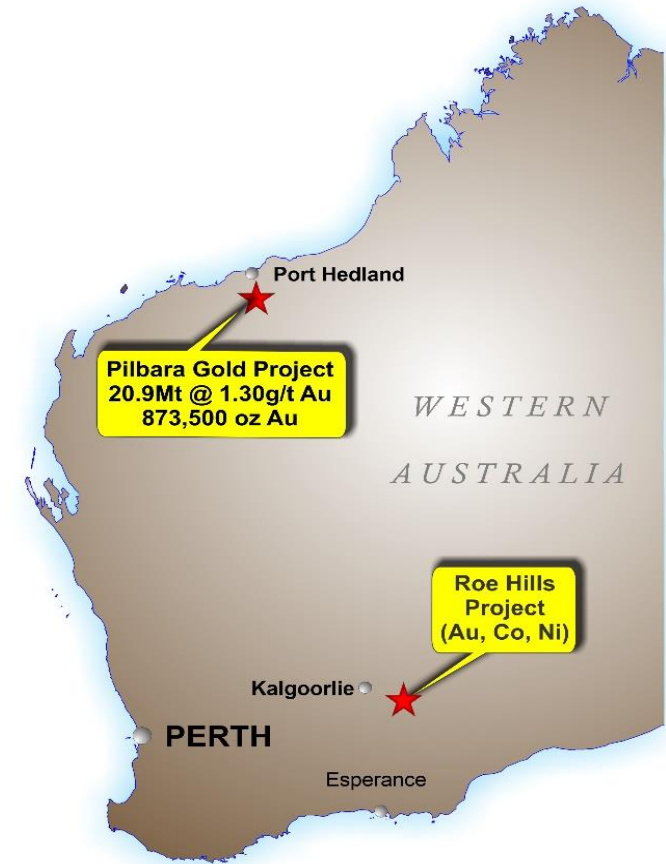
- 20,000m for 2021 RC drilling (ongoing)
- Scoping studies initiated (ongoing)
- New targets generated for follow up drilling

➤ Pilbara Regional Gold Exploration

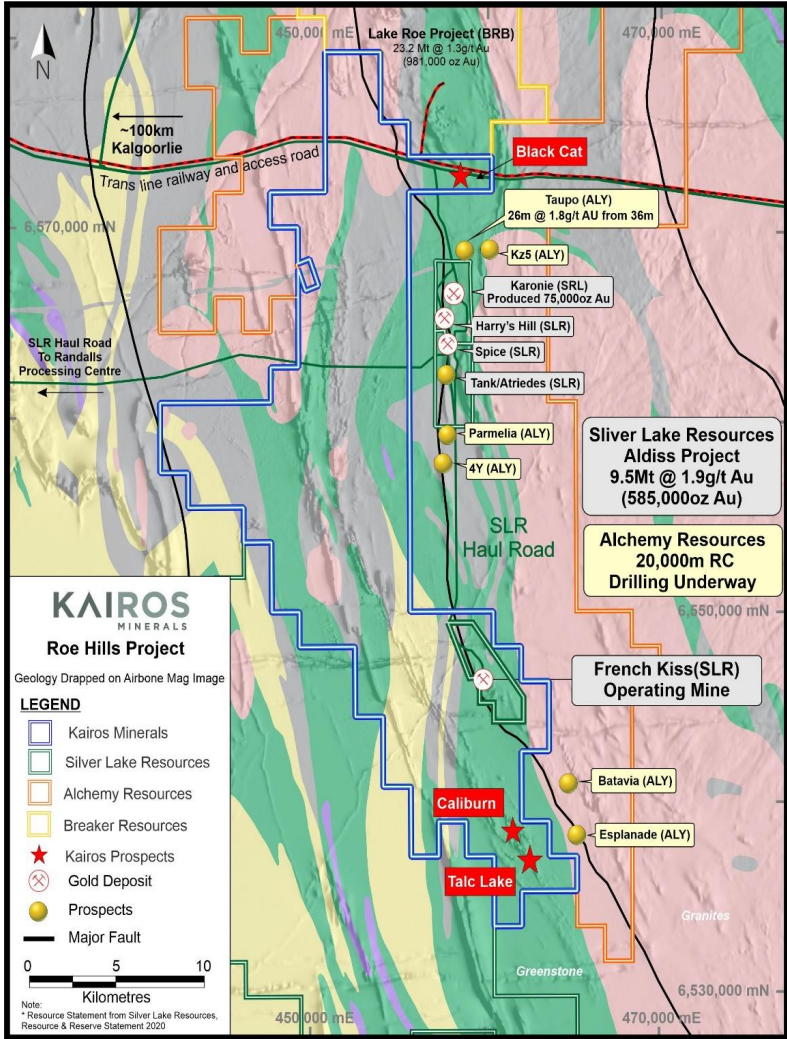
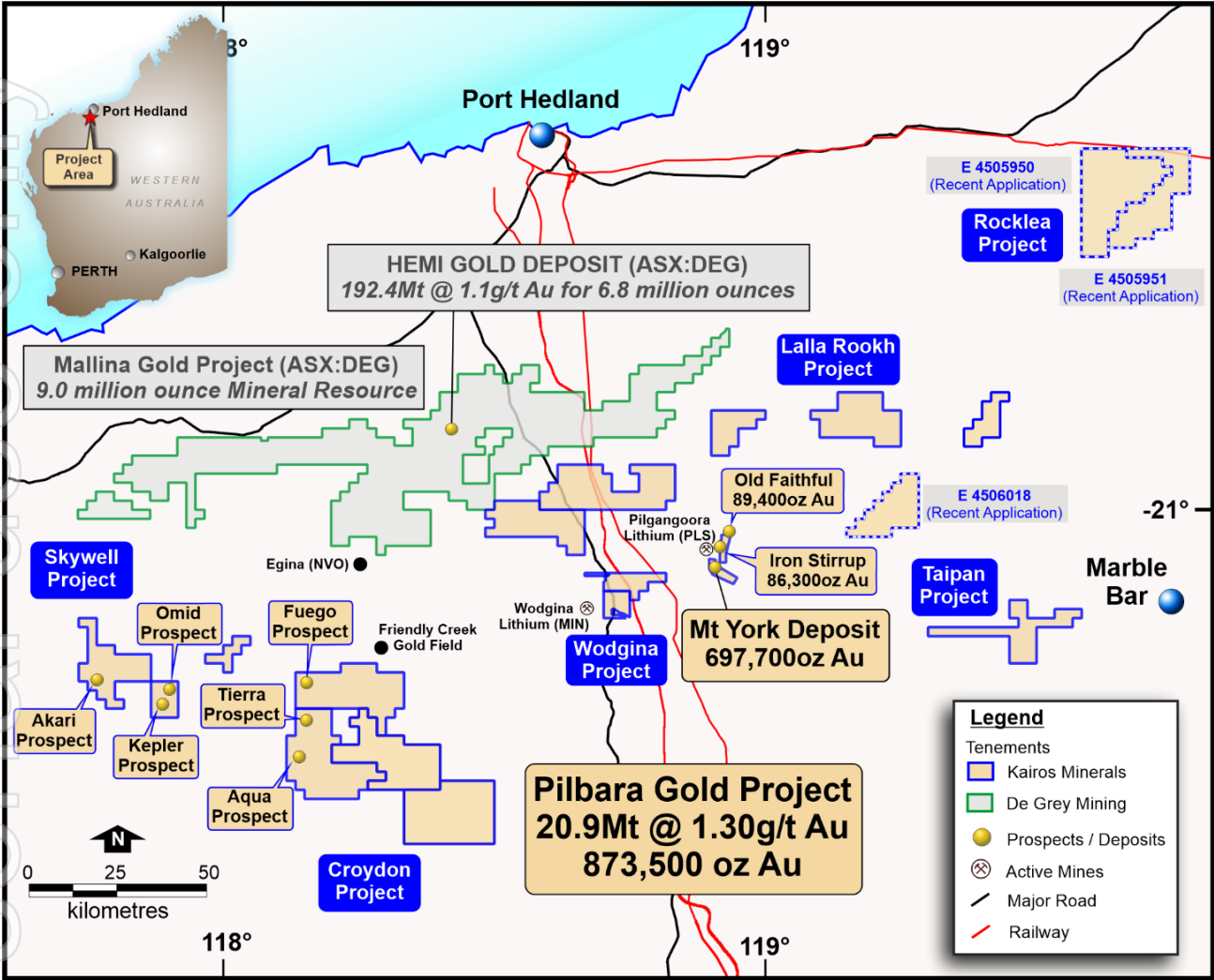
- 2,026 sq km of tenure in the Pilbara WA
 - Recent land increases with a focus on gold and Lithium
 - 5,000m completed at Kangan with results pending
 - Regional Mapping and CSIRO Ultrafine Soil sampling continuing, Hemi target generation

➤ Roe Hills Gold - Nickel

- Prospective strike length of +40km – Gold and Nickel exploration
- RC drilling for 3,000m completed.



West Australia – Pilbara and Goldfields WA

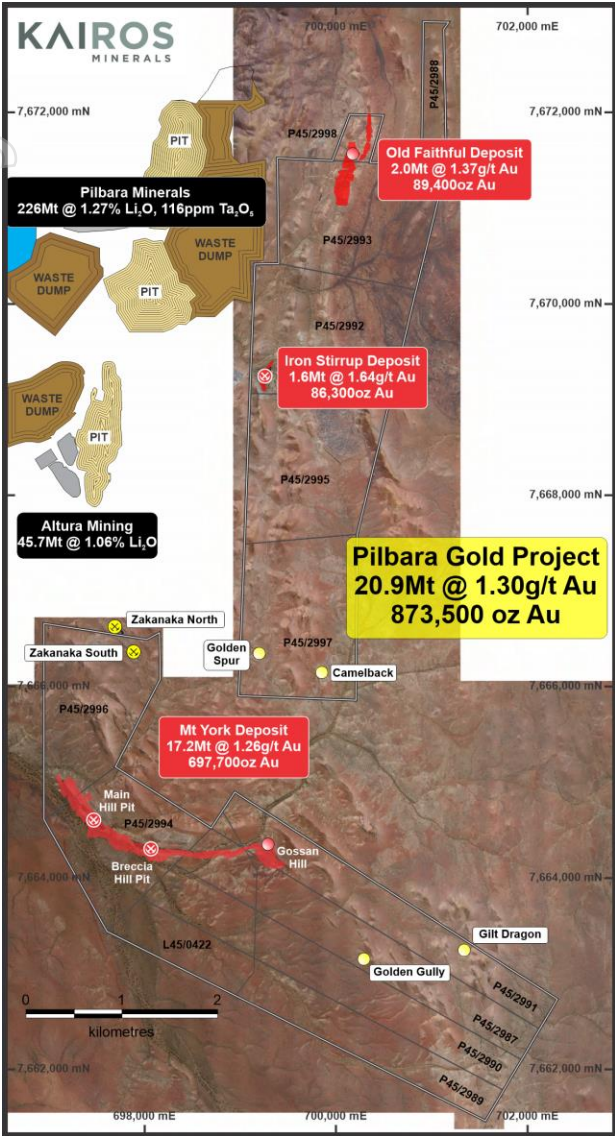


KAIROS MINERALS (ASX:KAI) – 2021 Exploration Update

Exploration Program		March	April	May	June	July	August	Sept	Oct	Nov	Dec
Roe Hills RC Drilling	3,000m										
Roe Hills Earthmoving											
Kangan/Wodgina Geochem											
Skywell Geochem	20,000m										
Croydon Geochem											
Mt York RC Drilling											
Mt York Heritage Survey											
Kangan Heritage Survey	5,000m										
Skywell Heritage Survey											
Kangan AC Drilling											



Pilbara Gold Project – 3 Deposits 873,000 ounces



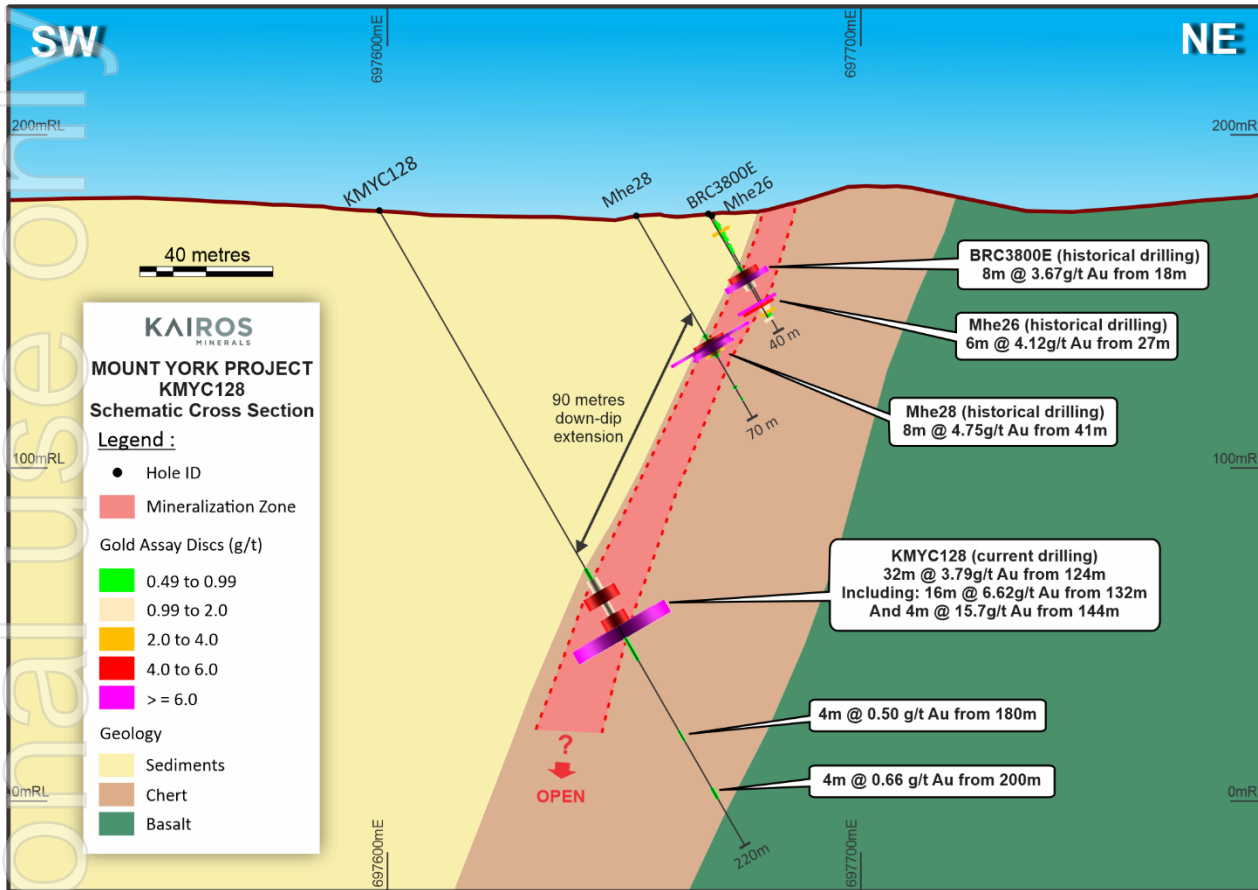
- The JORC Mineral Resource will underpin the commencement of open pit mining studies for the Pilbara Gold Project.
- The deposits are adjacent to the Lithium mines held by Pilbara Minerals some 25km from the Great Northern High and 70km south of DEG Hemi deposit.
- 20,000m of infill and extensional RC/Diamond drilling designed to expand the current resources and to bring a significant portion of the resources to Indicated and Measured.

Deposit	Indicated			Inferred			Total		
	Tonnes (kt)	Au (g/t)	Ounces (koz)	Tonnes (kt)	Au (g/t)	Ounces (koz)	Tonnes (kt)	Au (g/t)	Ounces (koz)
Mt York	6,844	1.29	284	10,419	1.23	413	17,263	1.26	698
Iron Stirrup	797	1.63	41	843	1.65	45	1,639	1.64	86
Old Faithful	925	1.33	39	1,102	1.41	50	2,027	1.37	89
Total	8,565	1.33	366	12,364	1.28	507	20,929	1.30	873

Note: Numbers may not total due to rounding

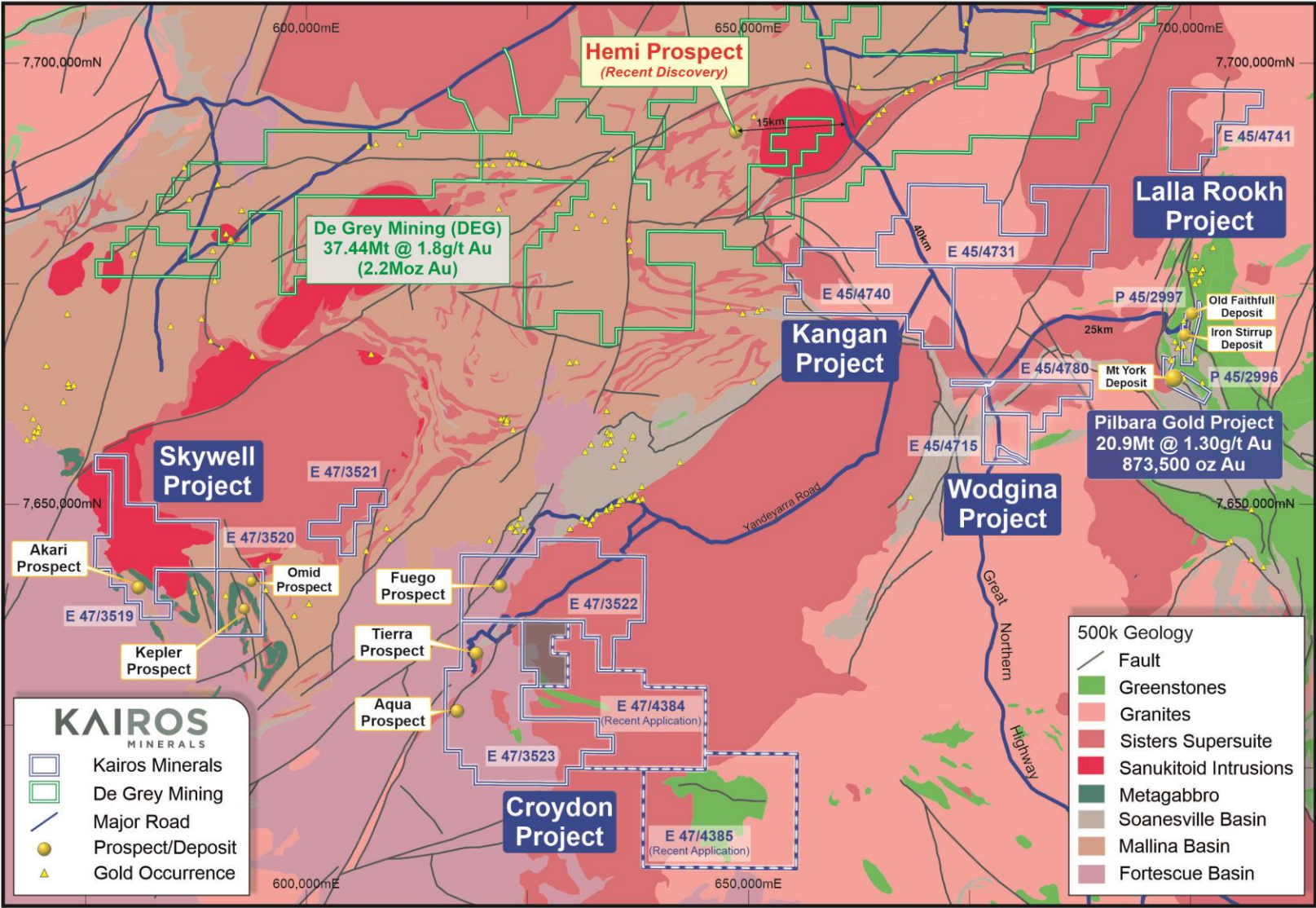
- (1) Resources are constrained by depths determined by a whittle shell that assumed basic economic parameters
- (2) Mt York comprises of the Breccia Hill, Main Hill and Gossan Hill deposits
- (3) Resource was previously released to the ASX on 4 March 2020

Mount York Deposit – best hole recently intersected

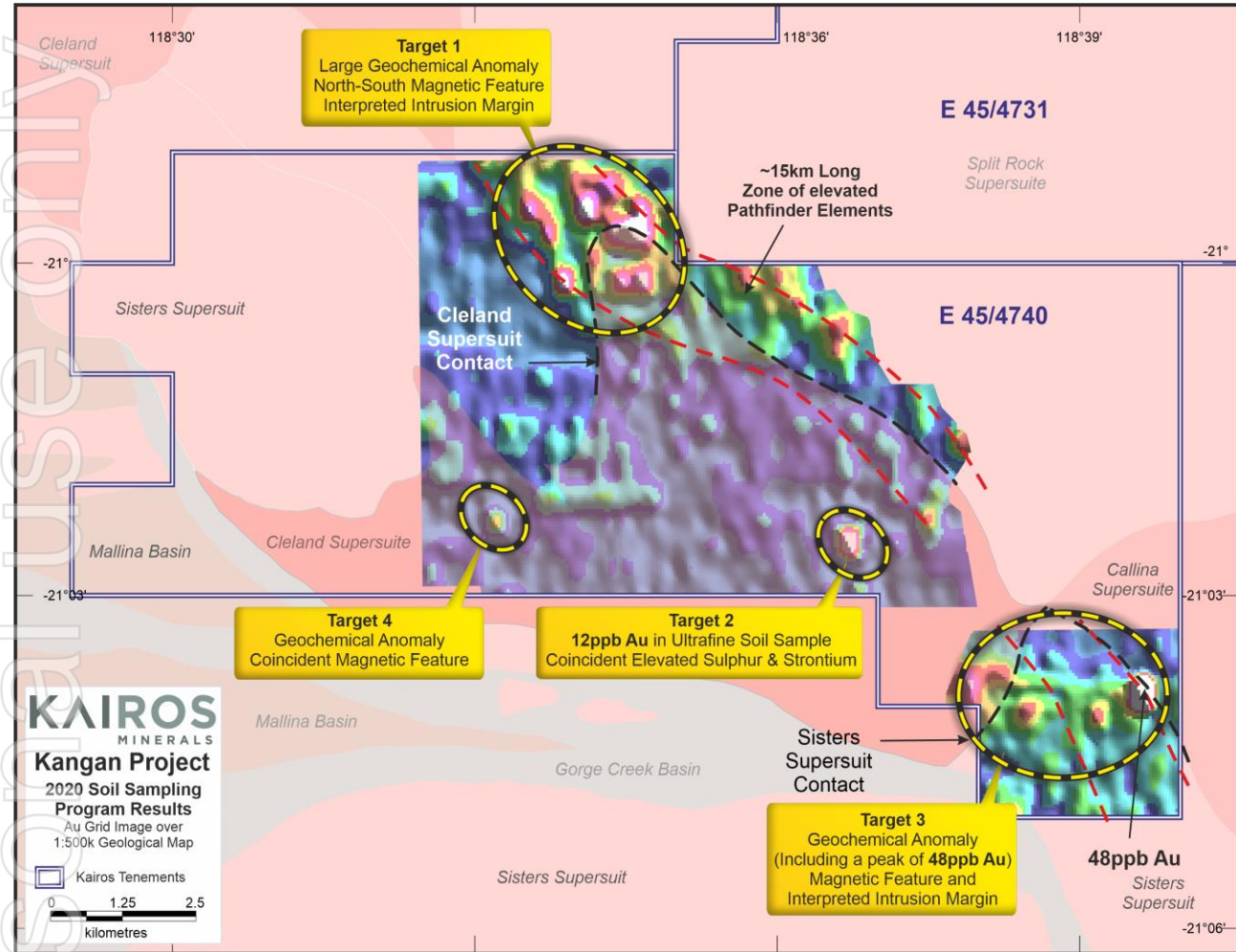


- Kairos completed 46 RC drill holes for a total of 7,249m at Mt York deposit. Results have been received from 10 holes to date, with best intercepts including:
- 32m @ 3.79g/t Au from 124m in KMYC128, including:
16m @ 6.62g/t Au from 132m, including:
4m @ 15.7g/t Au from 144m
- 36m @ 1.18g/t Au from 124m in KMYC127
- 8m @ 1.45g/t Au from 104m in KMYC130

Pilbara Regional - Hemi style intrusive related gold targets



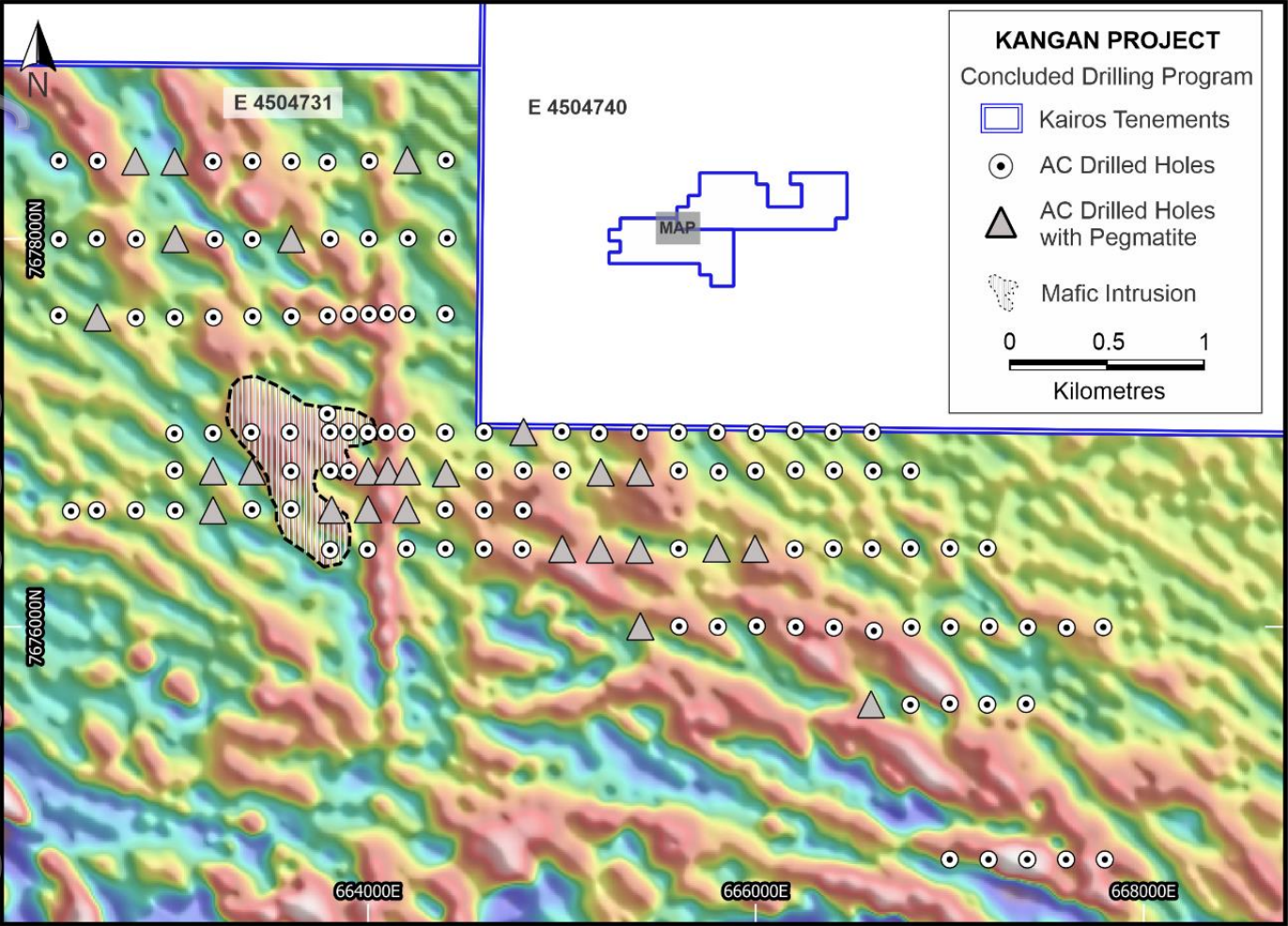
Kangan Project – 5,000m AC just 20km from Hemi discovery



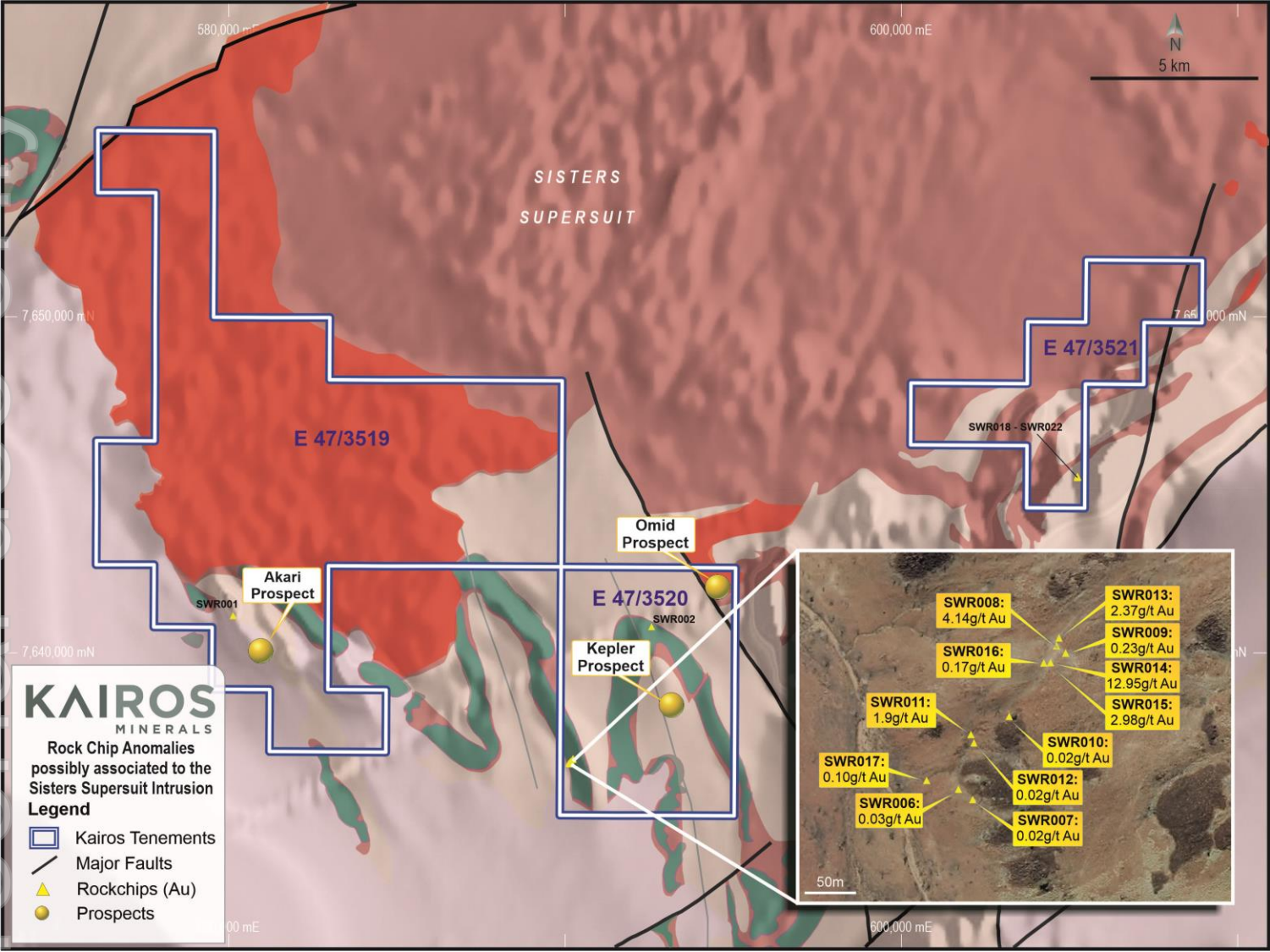
- 5,000m of AC completed following a detailed review of 2020 work utilising CSIRO Ultrafine Geochem has highlighted numerous Intrusive Related Gold targets.
- More detailed Geochem has been completed during 2021
- Heritage surveys for follow up RC and further AC drilling on track.



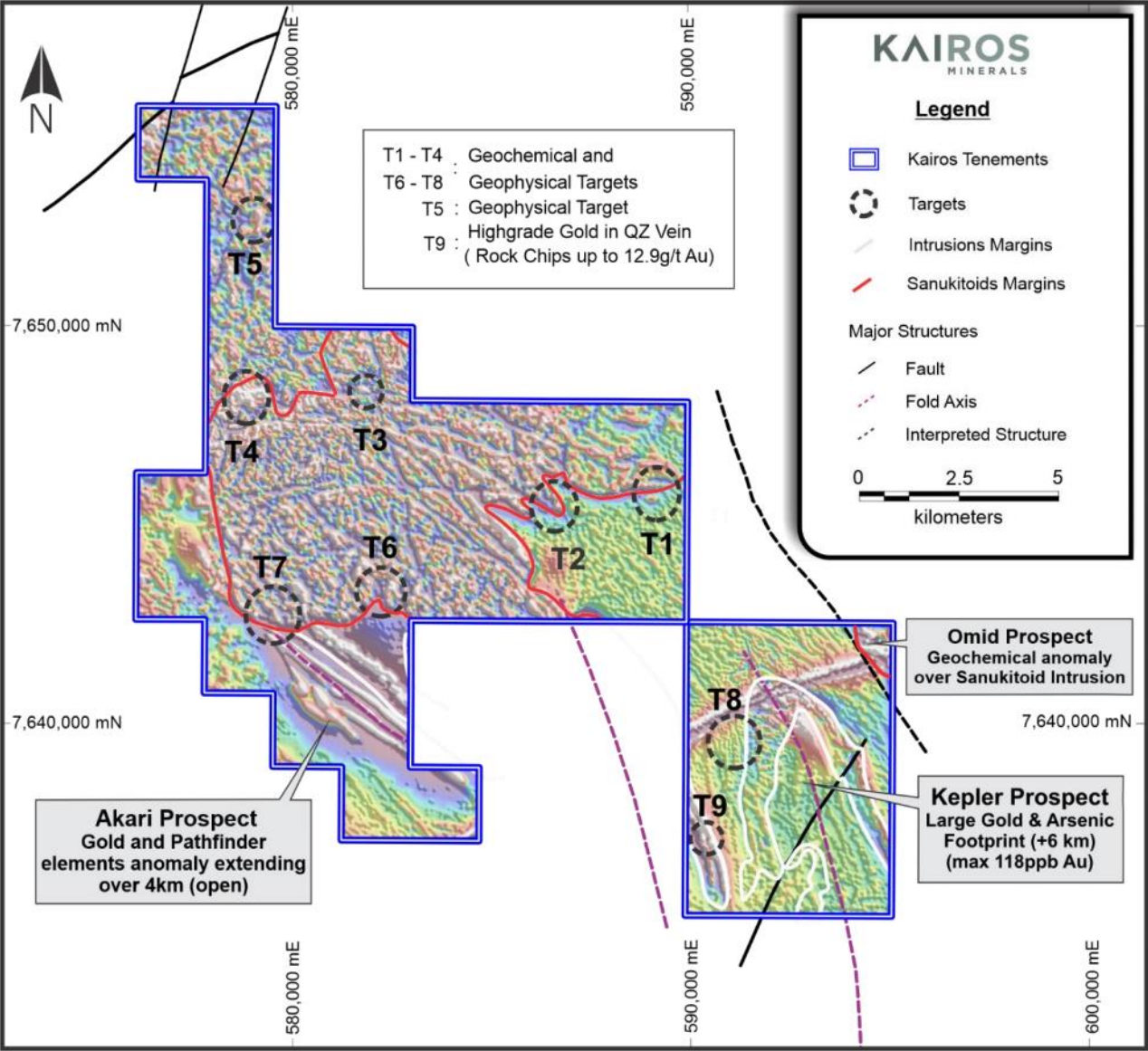
Kangan Project – new target 20km from Hemi discovery



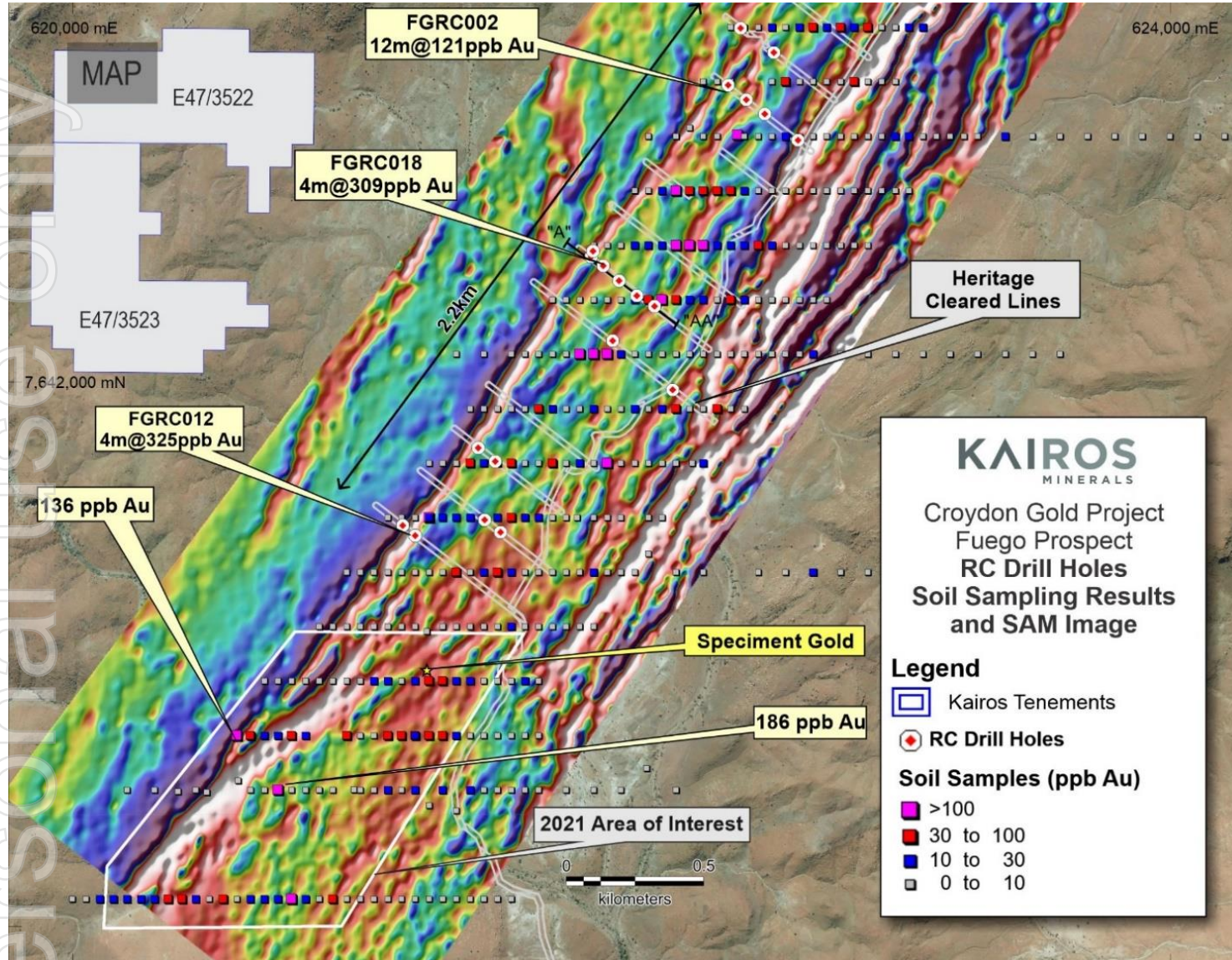
Skywell Project – large Intrusive Related gold potential



Skywell Project – large Intrusive Related gold potential



Fuego Prospect – 2020 Initial Reconnaissance drilling



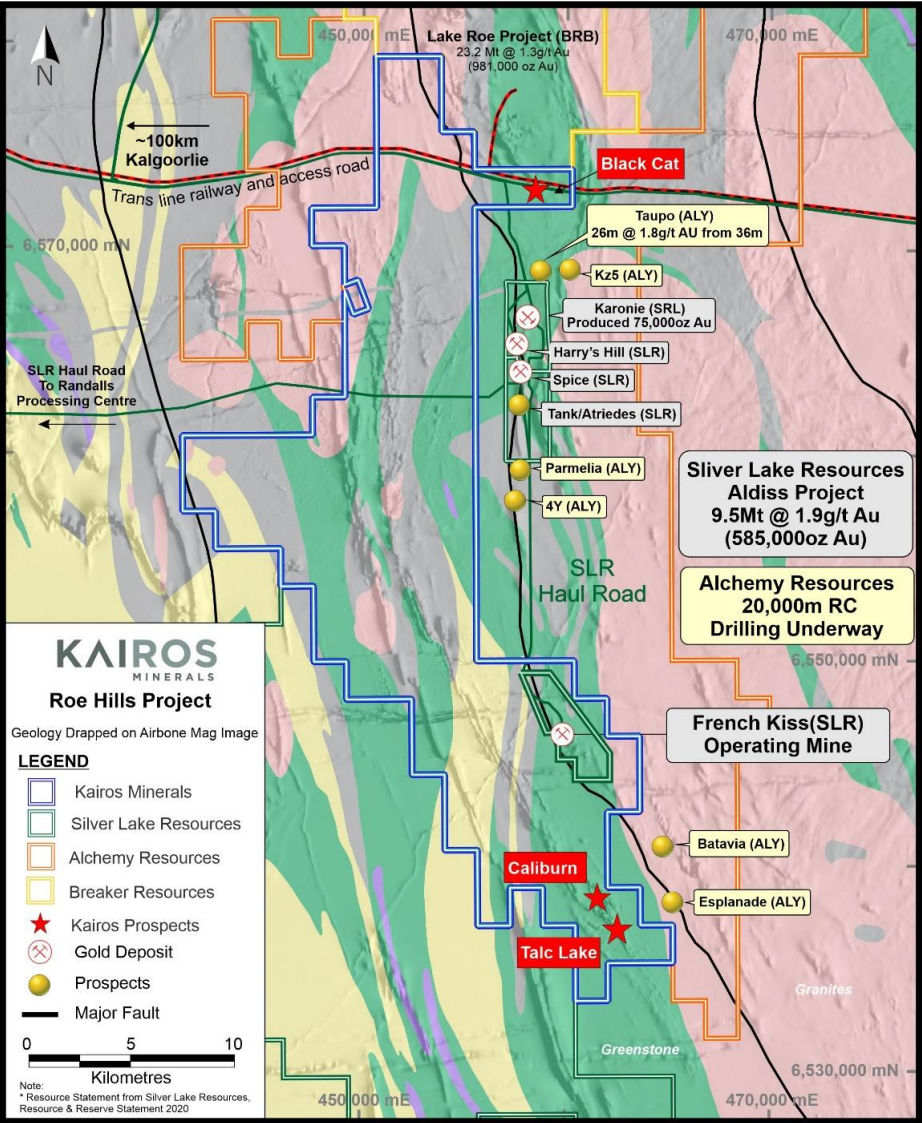
- Large regional gold anomaly partially tested in 2020 with broad spaced 200-400m RC drill lines.
- These reconnaissance RC drill holes intersected wide zones of disseminated pyrite within sedimentary units of the Hardy Formation.
- Initial RC Drilling results returned anomalous gold results up to 1m at 1 g/t Au in line with regional soil sampling

Wodgina Project – Significant unlocked Lithium potential



- *Located between the Wodgina Tantalum Mine and Pilgangoora Lithium Mine, 100km south of Port Hedland.*
- *Initial reconnaissance rock chip samples produced up to 1.6% Lithium.*
- *Regional tenement portfolio was originally pegged for both the gold and Lithium potential in the Pilbara.*
- *Expired JV at Wodgina allows Kairos to continue its Li exploration in the Pilbara*

Roe Hills – 120km east of Kalgoorlie - Gold and Nickel Potential

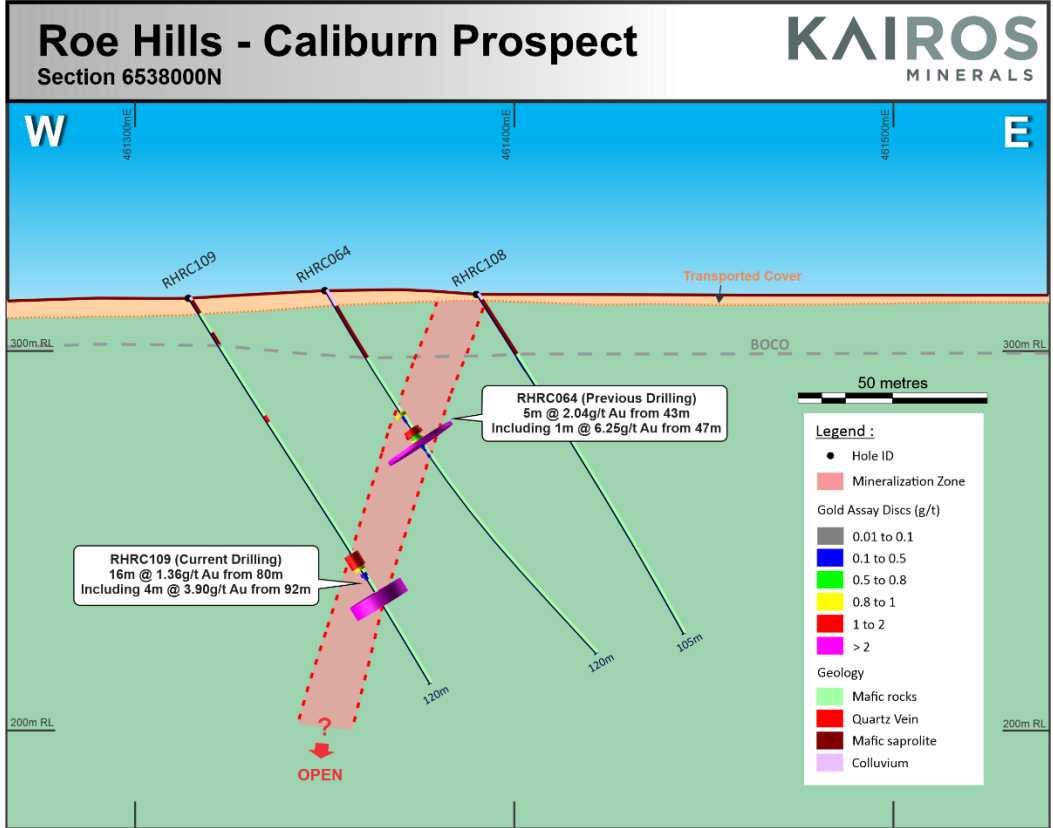
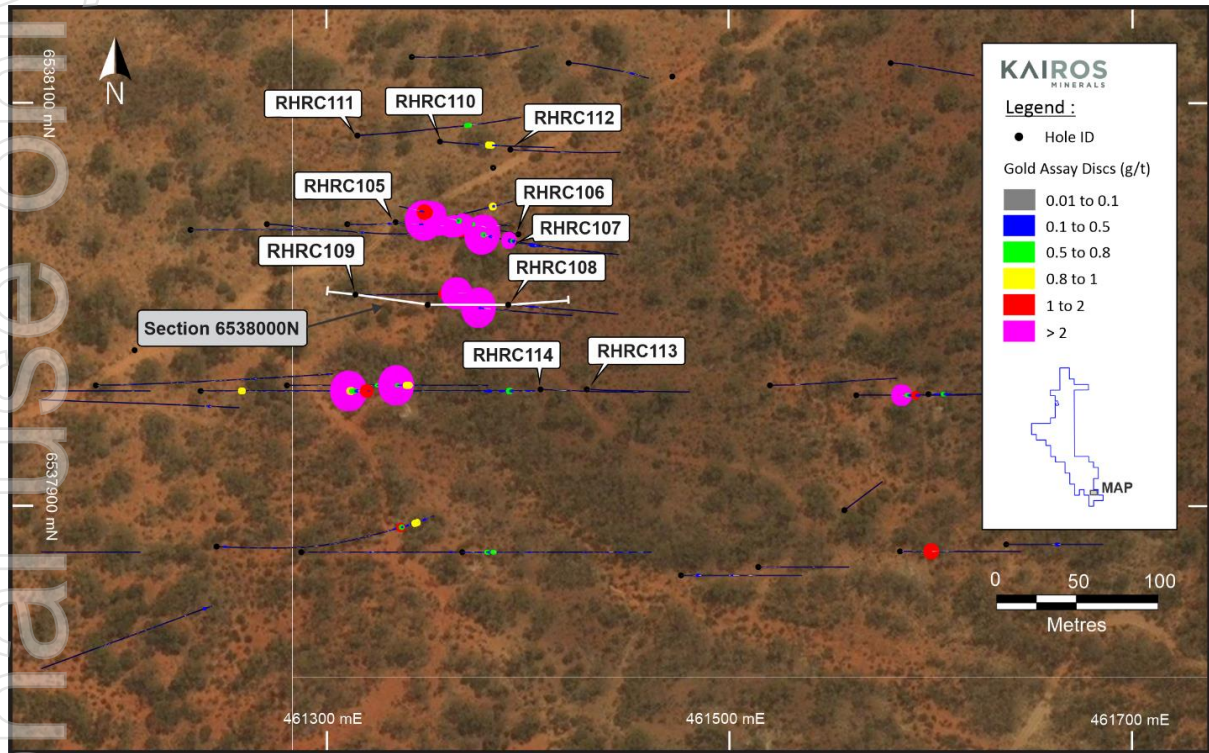


- *Three main Target ares to be tested with a 3,000m RC drilling program currently underway*

Significant Results from the Caliburn Prospect

- **RHRC017** 16m at 0.87 g/t gold from 106m including 4m at 2.30 g/t gold from 106m and
- **RHRC018** 9m at 1.15 g/t gold
- **RHRC063** 54m at 0.74 g/t gold from 10m Including 16m at 1.02 g/t gold from 22m and 2m at 6.43 g/t gold from 43m

Roe Hills – Caliburn RC drilling – shallow oxide Gold potential



KAIROS MINERALS (ASX:KAI) – Key milestones

- The Company has remained focussed on gold exploration over the last 4 years in the Pilbara.
- \$13.5M raised through 2020 with \$8.3M at 30 June 2021
- Resource upgrade in March 2020 to 873,000oz Au
- Scoping studies underway at Mount York.
- 20,000 RC program underway at Mount York since May.
- Kangan Project / Skywell Project– new Hemi style intrusive target areas.
- Over 4,000 soil samples collected in 2020 covering 150+ sq km for new CSIRO Ultrafine analysis.
- \$US gold price of \$US 1790/oz.
- Market Capitalisation of \$51 million