



OKLO ASX:OKU
RESOURCES LIMITED

**GROWING REAL OUNCES
A HIGH GRADE OPEN PIT GOLD
RESOURCE OPPORTUNITY**

WEBINAR PRESENTATION - NOVEMBER 2021 ASX:OKU

DISCLAIMER

This presentation has been prepared by Oklo Resources Limited (“OKU”). The information contained in this presentation is a professional opinion only and is given in good faith. The material in this presentation (“material”) is not and does not constitute an offer, invitation or recommendation to subscribe for or purchase any security in OKU, nor does it form the basis of any contract or commitment. OKU makes no representation or warranty, express or implied, as to the accuracy, reliability or completeness of this material. OKU, its directors, employees, agents and consultants shall have no liability, including liability to any person by reason of negligence or negligent misstatement, for any statements, opinions, information or matters, express or implied, arising out of, contained in or derived from, or for any omissions from, this material, except liability under statute that cannot be excluded. Statements contained in this material, particularly those regarding possible or assumed future performance, costs, dividends, production levels or rates, prices, resources, reserves or potential growth of OKU, industry growth or other trend projections are, or may be, forward looking statements. Such statements relate to future events and expectations and, as such, involve known and unknown risks and uncertainties, many of which are outside the control of, and may be unknown to, OKU. Actual results and developments may differ materially from those expressed or implied by these forward looking statements depending on a variety of factors. Recipients of this presentation are cautioned to not place undue reliance on such forward looking statements. OKU does not take responsibility to release publicly any revisions or updates to any forward looking statements to reflect events, circumstances or unanticipated events occurring after the date of this presentation except as required by law or by any appropriate regulatory authority.

This presentation is a visual aid and is not intended to be read as a stand alone document. The material contains selected and abbreviated summary information about OKU and its subsidiaries and their activities current as at the date of this presentation. The material is of general background and does not purport to be complete. OKU does not take responsibility for updating any information or correcting any error or omission which may become apparent after the date of this presentation.

Compliance Statement

This presentation contains information extracted from ASX market announcements reported in accordance with the 2012 edition of the “Australasian Code for Reporting of Exploration Results, Mineral Resources and Ore Reserves” (“2012 JORC Code”) and available for viewing at www.okloresources.com. The original ASX announcements are dated 21 December 2016, 30 January 2017, 21 February 2017, 3 March 2017, 7 March 2017, 15 March 2017, 30 March 2017, 6 April 2017, 26 April 2017, 29 May 2017, 21 June 2017, 12 July 2017, 25 July 2017, 14 August 2017, 16 August 2017, 4 September 2017, 28 November 2017, 5 December 2017, 20 December 2017, 5 February 2018, 22 February 2018, 8 March 2018, 28 March 2018, 3 May 2018, 16 May 2018, 22 May 2018, 2 July 2018, 6 August 2018, 28 August 2018, 3 September 2018, 12 September 2018, 19 September 2018, 30 January 2019, 19 February 2019, 6 March 2019, 11 April 2019, 17 April 2019, 27 May 2019, 15 August 2019, 14 Oct 2019, 20 November 2019, 10 December 2019, 17 December 2019, 14 January 2020, 20 January 2020, 29 January 2020, 13 February, 25 February, 24 March, 31 March, 7 April, 29 April, 28 May 2020, 22 July 2020, 27 August 2020, 31 August 2020, 26 October 2020, 9 December 2020, 17 December 2020, 18 January 2021, 4 March 2021, 22 April 2021, 17 May 2021, 24 May 2021, 1 June 2021, 3 August 2021, 1 September 2021, 7 September 2021, 13 October 2021 and 25 October 2021. The Company confirms it is not aware of any new information or data that materially affects the information included in any original ASX market announcement.

This presentation contains information relating to a Mineral Resource extracted from the Company’s ASX market announcement dated 30 March 2021 ‘Oklo Delivers Robust Initial Mineral Resource Estimate for Dandoko’, containing the competent person consent of Mr Malcolm Titley, an employee of the independent consulting company Maja Mining Limited, reported previously in accordance with the JORC Code (2012) and available for viewing at www.okloresources.com. Oklo Resources confirms that it is not aware of any new information or data that materially affects the information included in the original ASX market announcement and that all material assumptions and technical parameters underpinning the estimates in the original market announcement continue to apply and have not materially changed.

The information in this announcement that relates to Exploration Results is based on information compiled by geologists employed by Africa Mining (a wholly owned subsidiary of Oklo Resources) and reviewed by Mr Andrew Boyd, who is a member of the Australian Institute of Geoscientists. Mr Boyd, who is employed by Cairn Consulting Limited, is on a retainer to fulfil the role of the General Manager – Exploration of Oklo Resources Limited, and holds securities in the Company. Mr Boyd is considered to have sufficient experience deemed relevant to the style of mineralisation and type of deposit under consideration, and to the activity that he is undertaking to qualify as a Competent Person as defined in the 2012 edition of the “Australasian Code for Reporting of Exploration Results, Mineral Resources and Ore Reserves” (the 2012 JORC Code). Mr Boyd consents to the inclusion in this report of the matters based on this information in the form and context in which it appears.

GOLDEN POTENTIAL FOR A LARGE SYSTEM

HIGH GRADE OPEN PIT GOLD RESOURCE CLOSE TO TIER 1 OPERATIONS

Fekola 7.1Moz, Loulo 12.5Moz & Goukoto 5.4 Moz

ROBUST INTERIM MINERAL RESOURCE ESTIMATE (MRE)

Solid foundation set at Dandoko

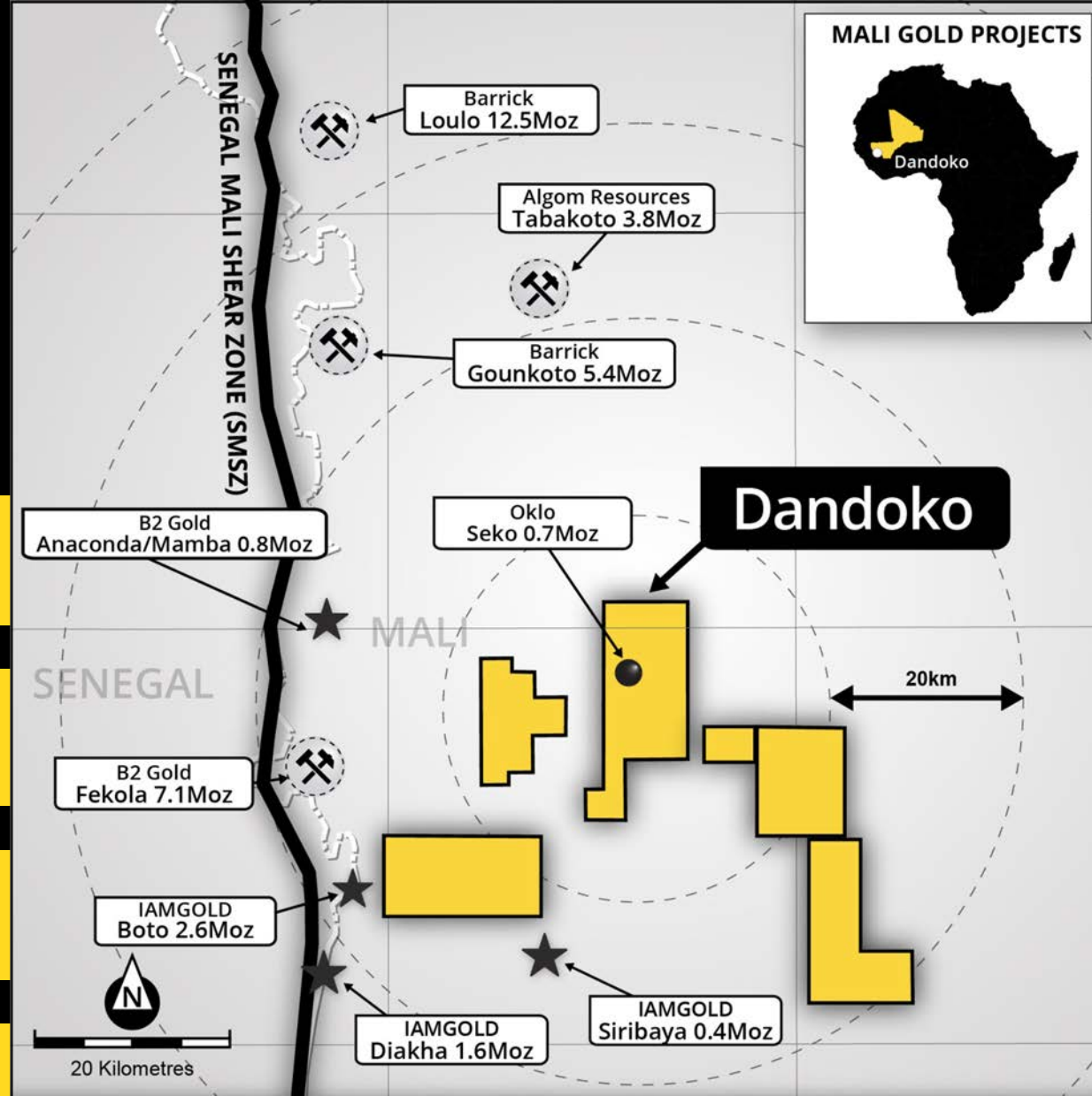
RESOURCE GROWTH POTENTIAL

Ongoing drilling within large 500km² landholding

REAL OUNCES - unlocks value-accretive milestones

Scoping and Environmental Studies well advanced

Experienced west African team



STRONG FOUNDATION

CORPORATE OVERVIEW

CAPITAL STRUCTURE

A\$68.04M

MKT CAP AT
A\$0.135/SHARE

~A\$8.0M

CASH BALANCE
(SEPTEMBER 2021)

504.0M

SHARES
ON ISSUE

17.5M PERFORMANCE RIGHTS (ZEPOs)

SHARE PRICE 12 MONTHS



MAJOR SHAREHOLDERS

BLACKROCK GROUP	11.1%
RESOLUTE MINING LTD	10.8%
RUFFER LLP	9.7%
CAPRICORN GROUP	5.1%
WESTOZ FUNDS MANAGEMENT	3.6%
DIRECTORS & MANAGEMENT	3.2%

64% TOP 20 SHAREHOLDERS

BOARD & MANAGEMENT

MARK CONNELLY

NON-EXECUTIVE CHAIRMAN

Seasoned financial and commercial executive with extensive resource industry experience across multiple jurisdictions. Track record for deal making in Africa includes merger of Papillon Resources with B2Gold in 2014 and Adamus with Endeavour Mining in 2011.

SIMON TAYLOR

MANAGING DIRECTOR & CEO

Resource executive with over 25 years experience in geology, management at CEO and Board levels and in the finance sector.

DR MADANI DIALLO

DIRECTOR - COUNTRY MANAGER

Geochemist with outstanding track record as team member in the discovery of Sadiola (13Moz), Morila (8.5Moz), Syama (7.9Moz), Essakane (5.3Moz) and others. Strong relationship with Mali Govt, awarded a "Knighthood" as a pioneer to the Mali gold industry.

ANDREW BOYD

GM - EXPLORATION

Former GM – Geoscience for ASX companies Papillon Resources and Mantra Resources. Geophysicist with over 20 years of exploration and mining experience.

BUILDING STRONG PARTNERSHIPS

ENVIRONMENTAL AND SOCIAL

Oklo invests in meaningful projects and lasting programs, enhancing community development.

- ▶ Environmental consultants appointed to complete baseline studies to form the basis of Oklo's Environmental and Social Impact Assessment ("ESIA")
- ▶ Regular engagement and dialogue with local authorities and community members
- ▶ Development of education and scholarship programs and provision of learning material to local schools
- ▶ Investment in Seko community water wells, near local school and market
- ▶ Water quality monitoring: analysis and treatment of local drinking and surface water
- ▶ Partnering with Government agencies to help identify and stop illegal strip mining and sluice mining within regional waterways



"Recognising the importance of our ESG responsibilities we have now completed the majority of baseline investigations and have an excellent understanding of the environmental and social constraints in the areas we operate..." MARK CONNELLY - CHAIRMAN

DANDOKO PROJECT

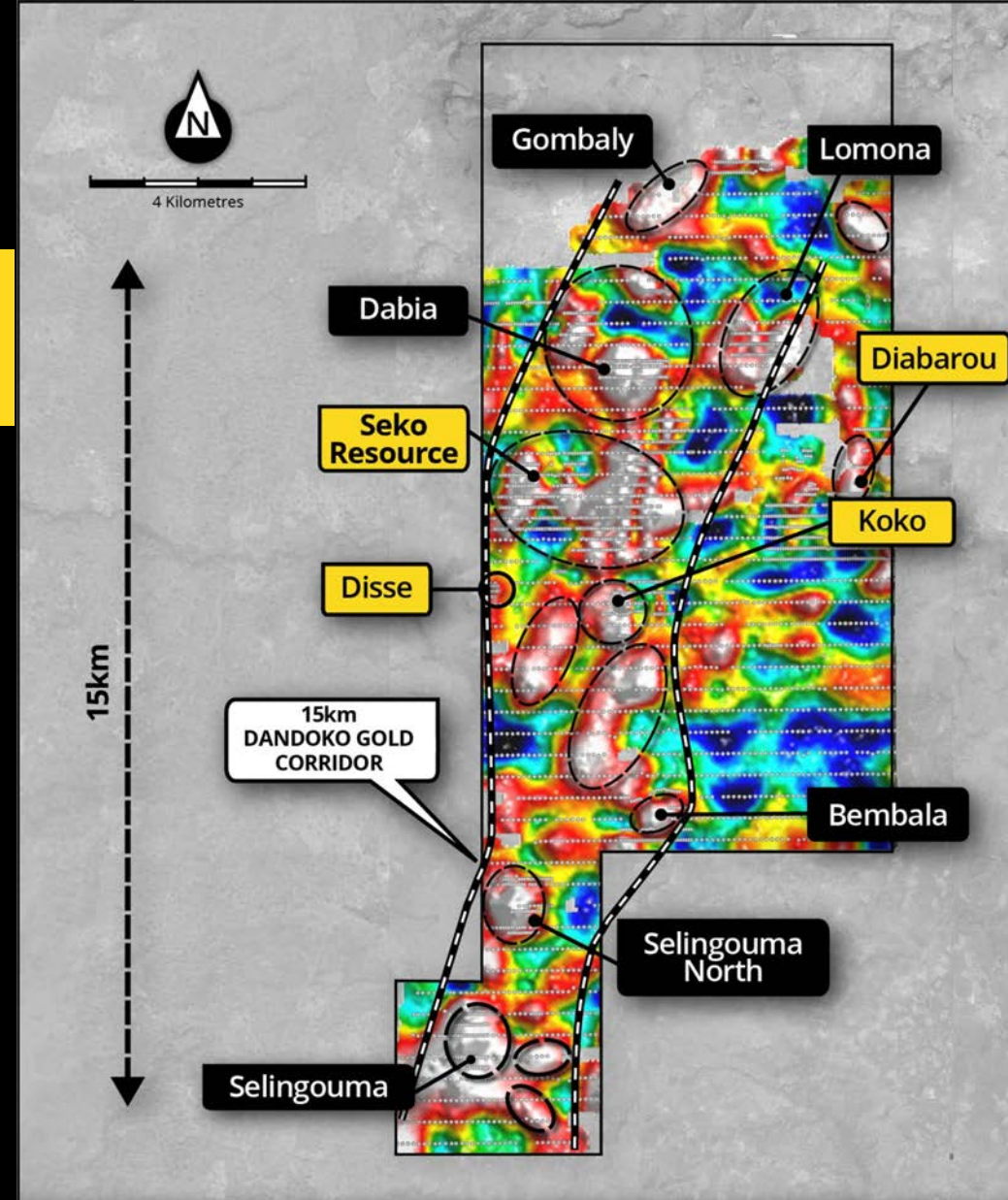
THE SEKO GOLD RESOURCE - REAL OUNCES

A HIGH GRADE, ROBUST, INITIAL MRE
56% MEASURED + 23% INDICATED = 79%

Resource Classification (JORC 2012)	Tonnes (Mt)	Gold grade (g/t)	Gold (kOz)
MEASURED	5.57	2.09	374.2
INDICATED	3.13	1.52	153.5
INFERRED	2.63	1.67	140.9
TOTAL	11.34	1.83	668.5

- ▶ Excellent grades, amenable to open cut mining
- ▶ **REAL OUNCES** - MRE constrained in optimised pit shells that
 - ▶ incorporated mining dilution, ore loss, royalties, taxes, metallurgical recoveries, mining, production and environmental costs based from nearby producing mines¹
- ▶ 65% soft oxide mineralisation
- ▶ Multiple near term, high grade growth opportunities

1. Open pit optimisation included an overall allowance of 10% for dilution and 7% for ore loss, utilised using appropriate Malian royalties and taxes, metallurgical recovery data, mining, production, and environmental costs from nearby producing mines. A low pit wall angle of 38° within the deep oxide profile observed and a 50° slope in fresh rock. Material within a US\$2,000/oz gold price based optimised pit incorporating the above factors provides a positive return for all material reported within the resource, indicating a reasonable prospect for eventual economic extraction. Refer ASX announcement dated 30 March 2021.



OKLO RESOURCES LIMITED

DANDOKO PROJECT

AUGER MAX GOLD IN HOLE DRILLING TARGETS

○ Completed Auger Drilling	□ Tenement
● Holes This Release	● Holes Assays Pending

Auger Max Gold in Hole

■ < 5 ppb	■ > 10 - 15 ppb	□ > 30 ppb
■ > 5 - 10 ppb	■ > 15 - 25 ppb	

DANDOKO MINERAL RESOURCE - REAL OUNCES

ROBUST, HIGH-GRADE RESOURCE AT VARIOUS CUT OFFS AND PIT CONSTRAINED US\$ GOLD PRICES

DANDOKO MRE - GRADE AND TONNAGE TABLE

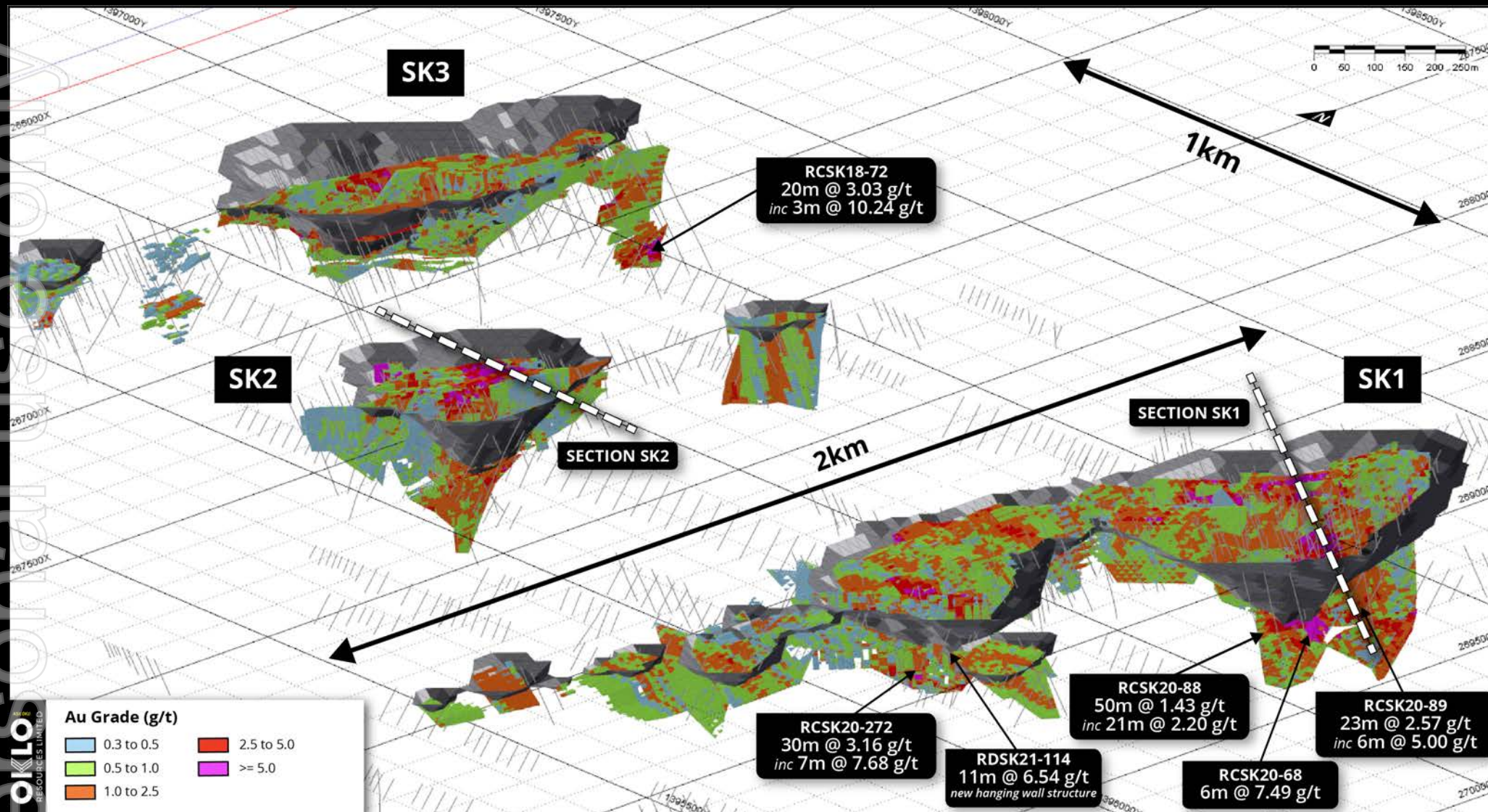
Cut-off grade (g/t)	Tonnes (Mt)	Gold grade (g/t)	Gold (kOz)
2.0	3.11	4.08	407.7
1.8	3.52	3.83	432.8
1.6	4.03	3.56	460.6
1.4	4.72	3.25	494.1
1.2	5.59	2.95	530.2
1.0	6.67	2.65	568.1
0.7	8.80	2.21	626.1
0.5	10.28	1.98	654.7
0.3	11.34	1.83	668.5

SEKO PITS ONLY - CONSTRAINED WITH VARYING GOLD PRICES

Gold Price (US\$ / Oz)	Gold (kOz)	Gold grade (g/t)	Strip ratio	% change
1,250	475.1	1.97	5.9	-22%
1,500	557.0	1.84	7.1	-8%
1,750	582.5	1.78	7.3	-4%
2,000	606.5	1.74	7.8	Base
2,250	621.7	1.77	8.0	2%

DANDOKO MINERAL RESOURCE - SEKO

91% OF RESOURCE FROM SK1-3 - LARGE OXIDE COMPONENT FROM SURFACE GROWTH POTENTIAL OUTSIDE OF CURRENT PIT CONSTRAINTS

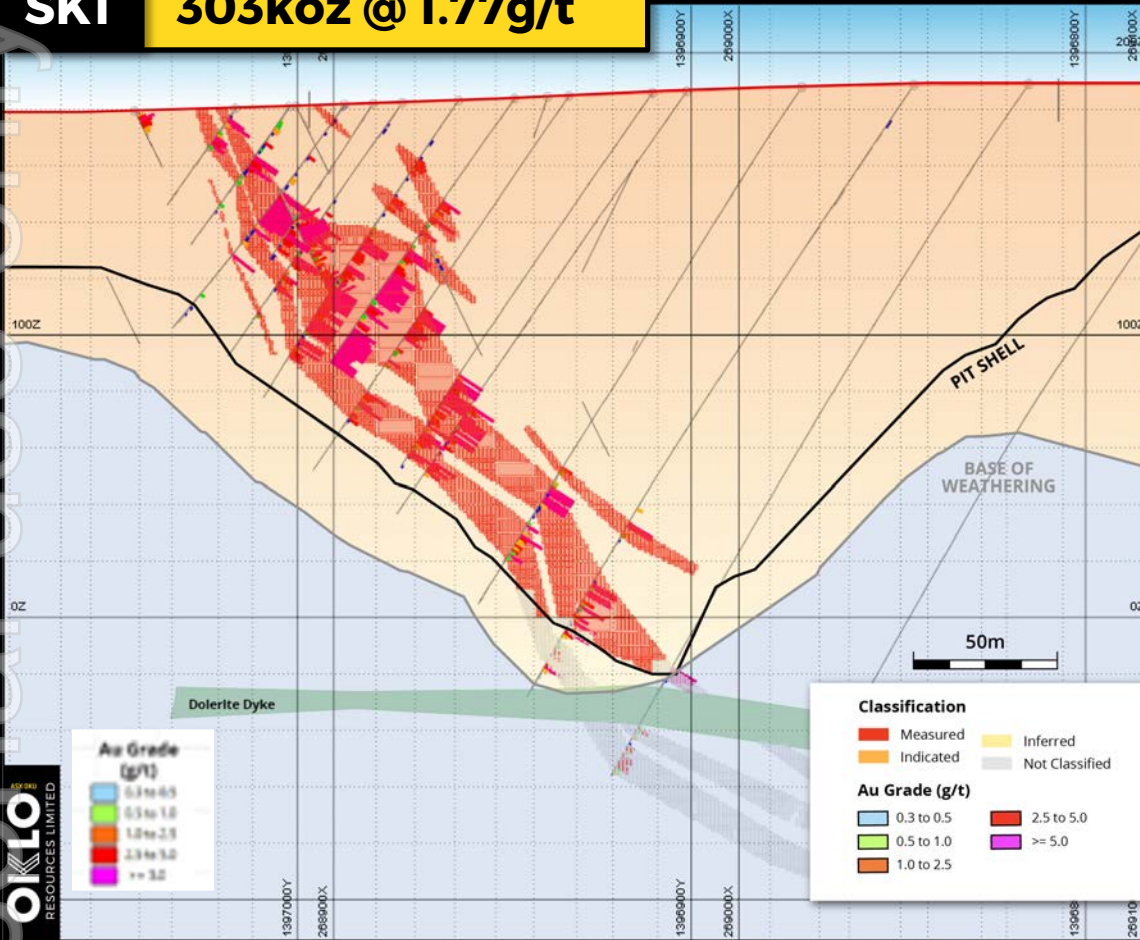


DANDOKO MINERAL RESOURCE - SEKO

HIGH CONFIDENCE RESOURCE CLASSIFICATION, POTENTIAL HIGH-GRADE STARTER PITS

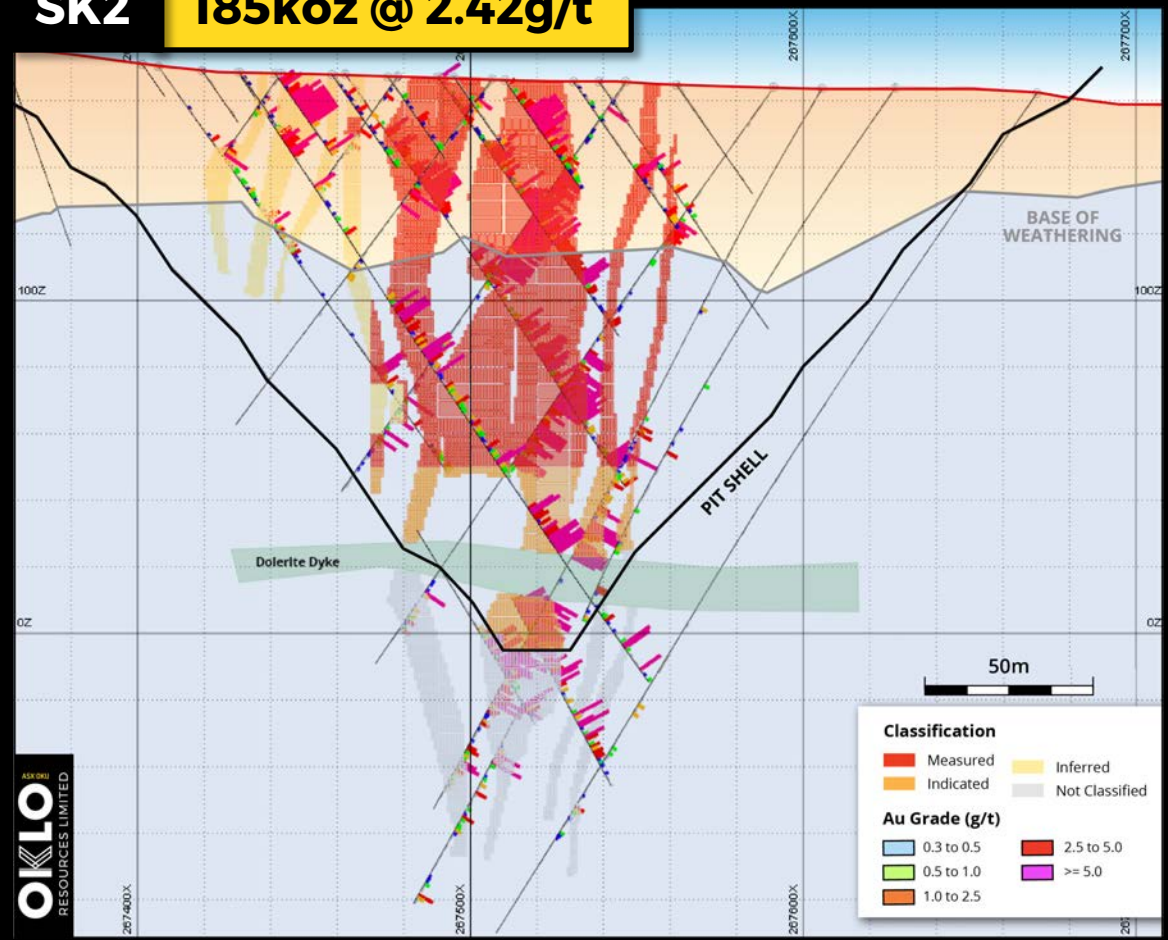
SK1

303koz @ 1.77g/t



SK2

185koz @ 2.42g/t

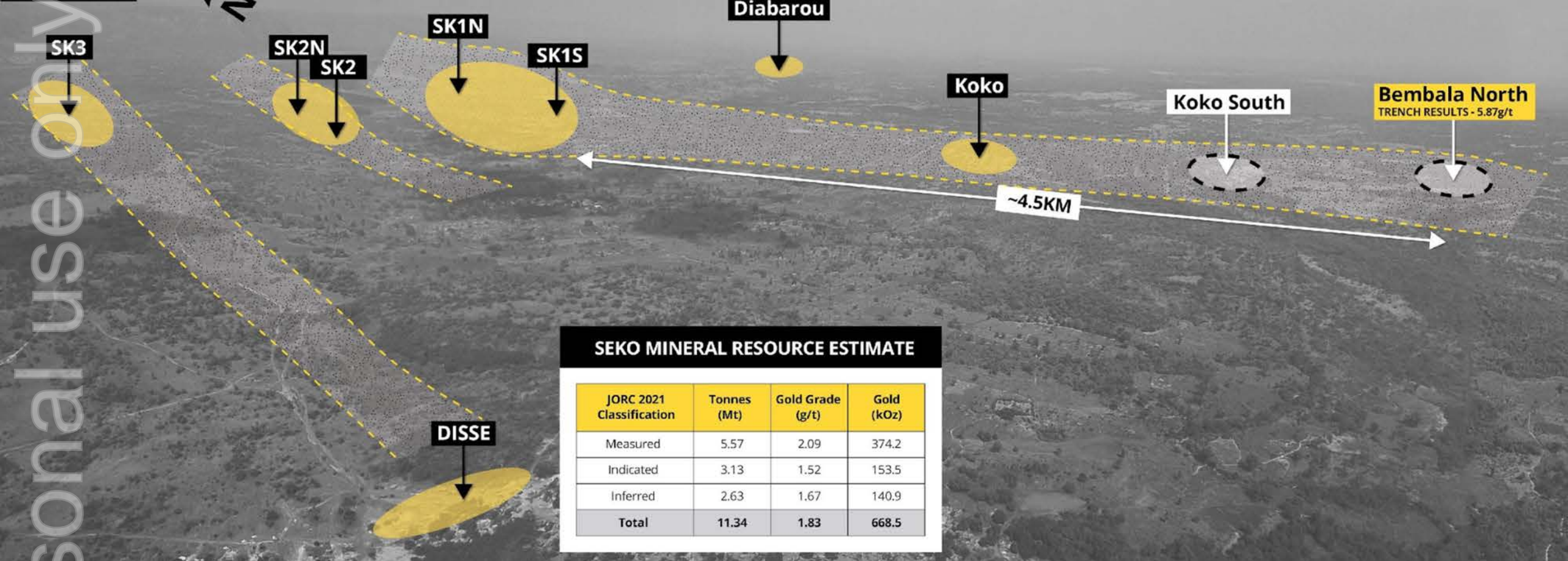


OKLO
RESOURCES LIMITED

OKLO
RESOURCES LIMITED

DANDOKO REAL OUNCES CLOSE PROXIMITY

GROWING THE SYSTEM



SEKO MINERAL RESOURCE ESTIMATE

JORC 2021 Classification	Tonnes (Mt)	Gold Grade (g/t)	Gold (kOz)
Measured	5.57	2.09	374.2
Indicated	3.13	1.52	153.5
Inferred	2.63	1.67	140.9
Total	11.34	1.83	668.5

DANDOKO GROWING THE RESOURCE

9,000m OF DRILLING UNDERWAY

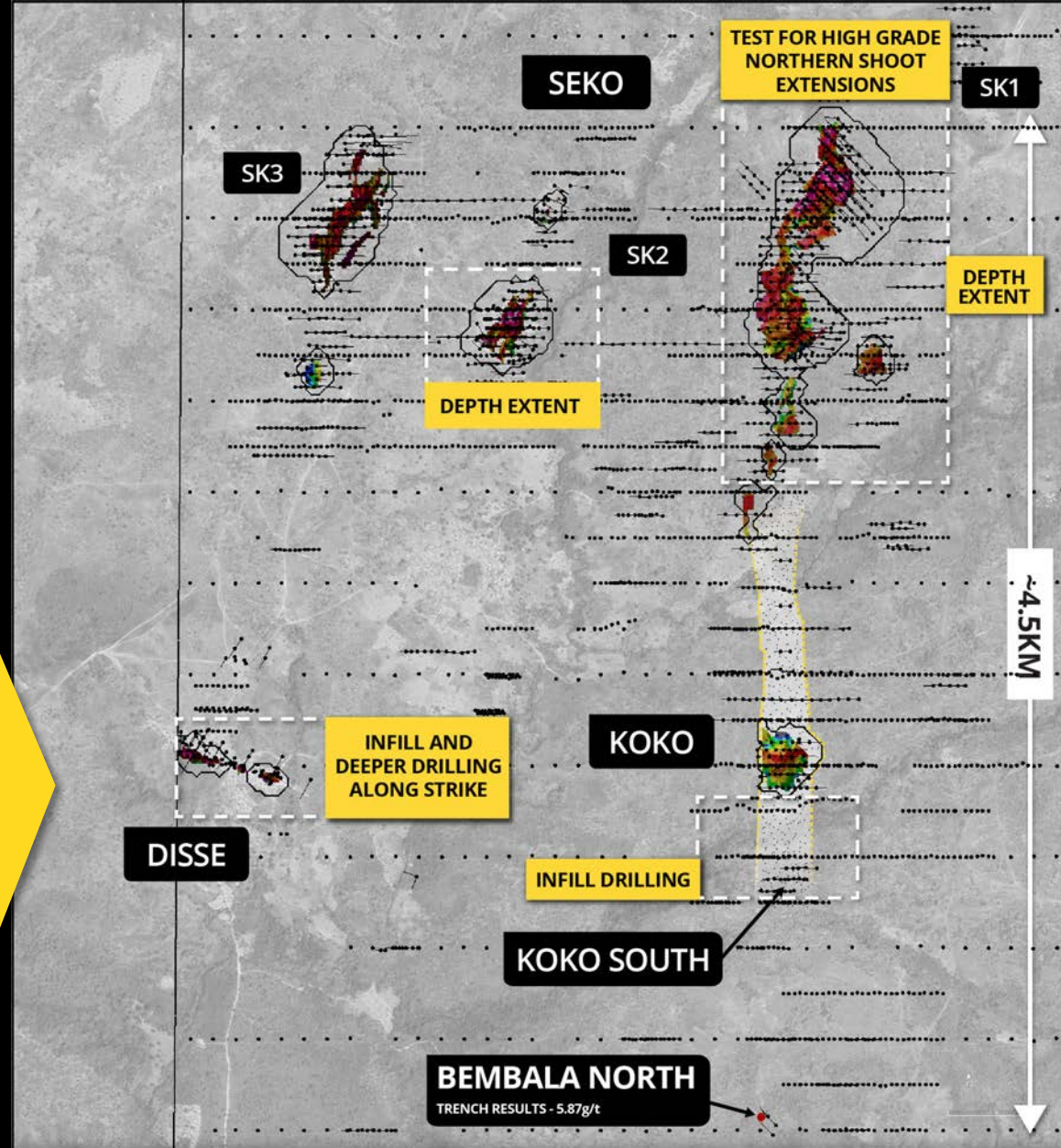
DISSE
Infill high grade gold along strike

SK2
Targeting depth extension below pit

SK1
Targeting high-grade shoots below pits

KOKO SOUTH
Infill new oxide zone

SEKO
Initial deep DD drilling of conceptual targets based on results of the 3D IP and seismic



DANDOKO PROJECT

SEKO, KOKO & DISSE
DRILL PLAN, GOLD BLOCK
MODEL AND OPEN PIT OUTLINES

- Drill Holes
 - Pit Outline
 - ▬ Mineralised Trend
- Gold Grade ppm - Block Model in Pits
- | | | | | |
|---------|---------|---------|---------|----------|
| >5 | 2-5 | 1-2 | 0.75-1 | 0.5-0.75 |
| 0.4-0.5 | 0.3-0.4 | 0.2-0.3 | 0.1-0.2 | 0-0.1 |

Personal use only

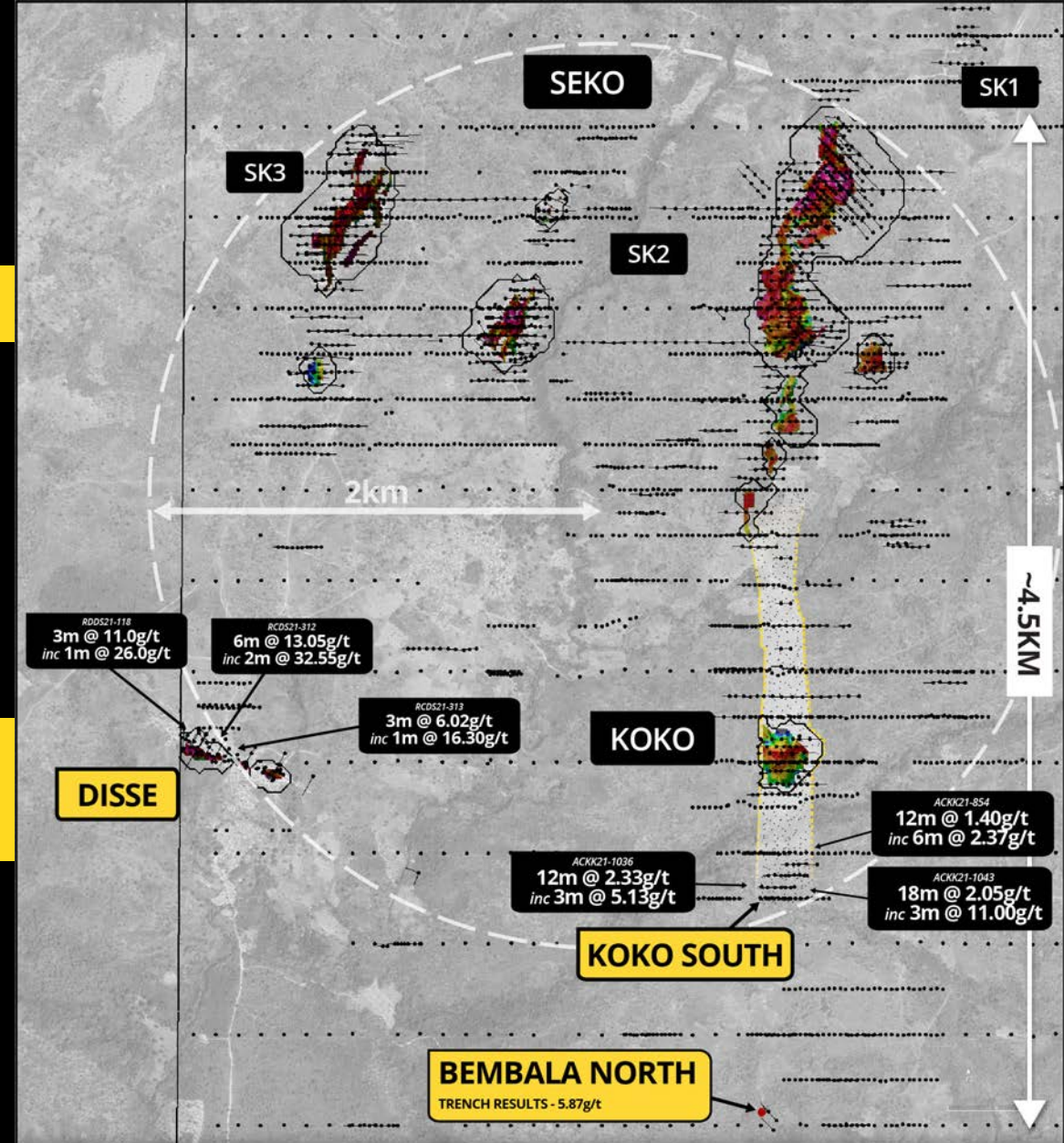
DANDOKO GROWING THE RESOURCE

DISSE - HIGH GRADE GOLD POTENTIAL

- ▶ 21m at 5.69 g/t gold
- ▶ 6m at 13.05 g/t gold
 - ▶ inc 2m at 32.55 g/t
- ▶ 3m at 22.67 g/t gold
- ▶ 13m at 4.69 g/t gold
- ▶ 3m at 11.00 g/t gold
 - ▶ inc 1m 26.00 g/t
- ▶ 16m at 3.00 g/t gold
 - ▶ inc 3m at 10.12g/t
- ▶ 4m at 8.39 g/t gold

SK1 - BEMBALA CORRIDOR - 4.5 KM OXIDE CONTINUES SOUTH

- ▶ First shallow limited drilling returned significant zones of gold mineralisation
- ▶ 18m at 2.05 g/t gold inc 3m at 11.00 g/t
- ▶ 12m at 2.33 g/t gold inc 3m at 5.13 g/t
- ▶ 12m at 1.40 g/t gold inc 6m at 2.37 g/t

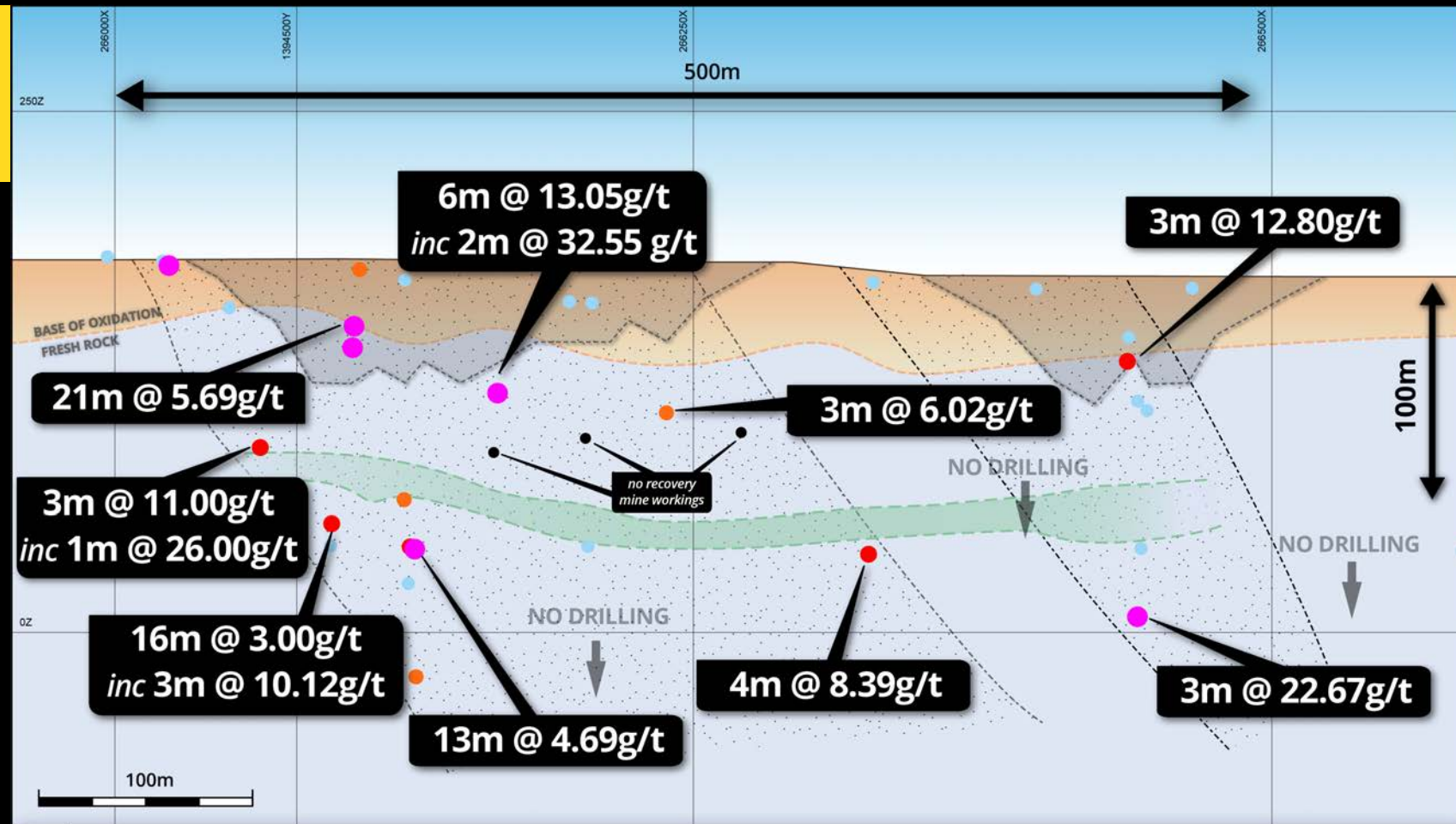


Personal Use Only

DANDOKO GROWING THE RESOURCE

HIGH GRADE GOLD POTENTIAL - DISSE

- ▶ Limited wide spaced drilling (100-150m sections) over 500m strike length
- ▶ Only a small conversion to the MRE 0.15Mt at 2.57g/t = 12.1Moz all inferred
- ▶ Infill drilling underway with assays pending
- ▶ Potential for high grade shoots



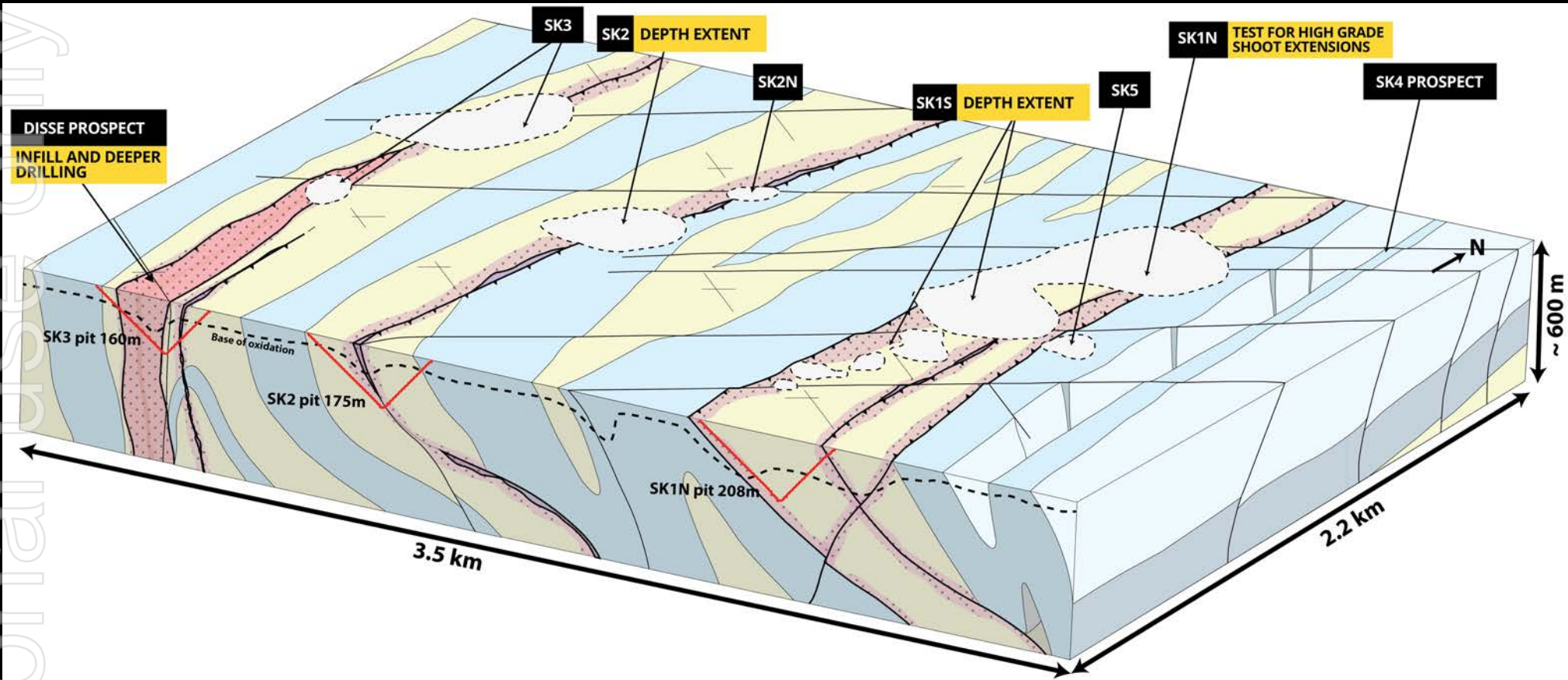
OKLO
RESOURCES LIMITED

DANDOKO PROJECT DISSE LONG SECTION

- X Results previously announced g/t Au
- Pit March 2021 JORC Resource
- Mafic Dyke
- Target Area
- Grade x Thickness (g/t Au x m)
 - <10g/t
 - 10 to 20g/t
 - >= 50g/t
- 20 to 50g/t
- >= 50g/t
- no recovery, mine workings

UNDERSTANDING THE SYSTEM GROWING THE RESOURCE

FIND THE PRIMARY ZONE SOURCE - FEEDER ZONE



SEKO & DISSÉ SYSTEMS DANDOKO GOLD CORRIDOR

Structure "D2" faults. Reactivated, remobilisation & concentration of Au "D1" thrust faults. Localisation of albite/carbonate/silica hydrothermal alteration	Drilling 2021 MRE pit outlines 2021 MRE pit depths (projected to cross section)	Lithology Polymictic hydrothermal breccia (tourmaline/carbonate/sulphide matrix) Strongly albitised felsic intrusive (albite)	Calcareous siltstones & mudstones Siliciclastic rocks (greywacke & turbiditic sandstones)	Alteration Albite/carbonate/silica hydrothermal alteration
---	--	--	--	--

DANDOKO RESOURCE

SIMILARITIES TO THE LARGE SYSTEMS IN THE REGION

SEKO

SIMILARITIES TO LARGE SYSTEMS IN THE REGION

PROXIMAL ALTERATION

Intense, pervasive albitisation of wall rock +/- Fe-rich carbonate

Sheared albitised wall rock in chlorite/carbonate/pyrite matrix

Brecciated albitised host rock with chlorite/carbonate/pyrite matrix

SKIN
RDSK20-096
- 303m



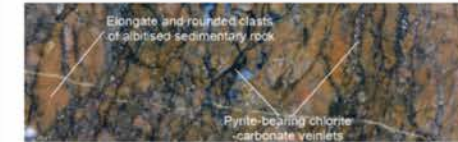
Yalea/Goukoto
- Barrick Gold



Lawrence et al., 2013



Lawrence et al., 2013



Lambert-Smith et al., 2015

▶ The alteration is characterised by albite-sericite-carbonate-silica-pyrite assemblage within turbiditic greywacke

▶ Similar to the other large gold systems in the region, including B2 Gold's Fekola deposit 30km to the west and the Yalea/Goukoto deposits within Barrick Gold's 18Moz Loulo / Goukoto complex located ~50km to the northwest

METALLURGICAL TESTWORK PROGRAM

STRAIGHT FORWARD, NON-REFRACTORY CHARACTERISTICS

- ▶ Likely processing route incorporating a simple, industry standard cyanide leach circuit
- ▶ Encouraging leach kinetics and rapid leach times
- ▶ Oxide mineralisation amenable to gravity concentration
- ▶ Ball mill work indices comparable to other operations in the region
- ▶ Moderate bond abrasion index for oxide and fresh mineralisation

SEKO	CYANIDE LEACH RECOVERIES (%)			FLOTATION RECOVERIES (%)		
	OXIDE	TRANS.	FRESH	OXIDE	TRANS.	FRESH
SK1	97.4%	81.4%	N/A	N/A	96.6%	N/A
SK2	94.1%	84.7%	88.0%	N/A	95.3%	91.3%

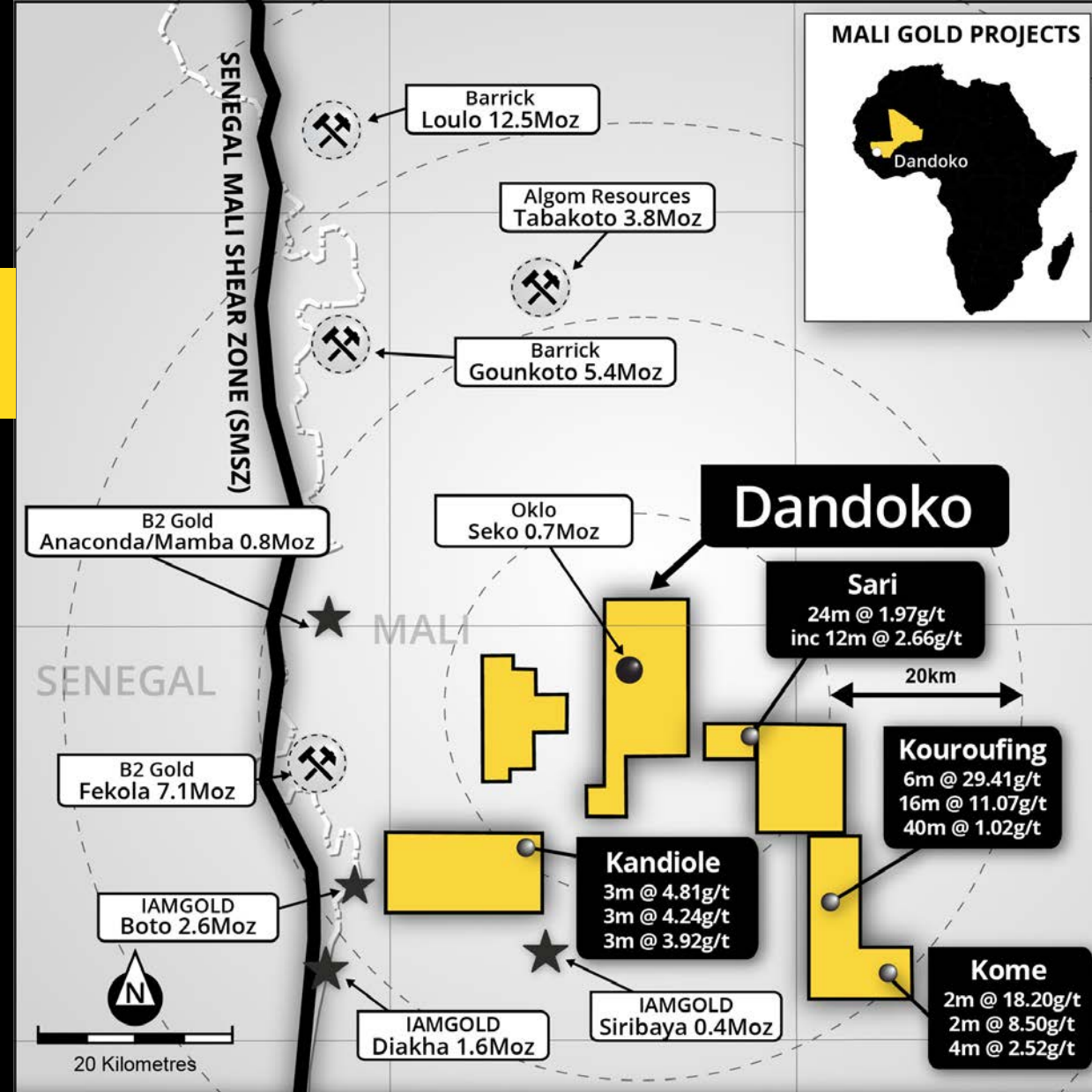
SEKO MRE WEATHERING PROFILES BY DEPOSIT						
<i>Oz gold</i>	SK1	SK2	SK3	OTHER	TOTAL	%
OXIDE	293.6	54.4	32.4	54.5	434.9	65.7%
TRANS	8.7	43.8	30.5	1.0	83.8	12.7%
FRESH	0.5	86.4	56.3	6.6	149.8	21.6%
TOTAL	302.8	184.5	119.2	62.0	668.5	

RESOURCE GROWTH

MULTI-MILLION OUNCE REGION

GROWING THE RESOURCE SIMILARITIES TO LARGE SYSTEMS

- ▶ 100% - owned projects
- ▶ Satellite projects in trucking distance to Seko including:
 - ▶ Sari
 - ▶ Kandiole
 - ▶ Kouroufing



OKLO RESOURCES LIMITED

MALI GOLD PROJECTS

- Oklo Projects
- SMSZ
- Country Border
- Advanced Project
- ⚒ Gold mine
- Seko Mineral Resource Location

Map Area

210713

Personal use only

SARI PROJECT

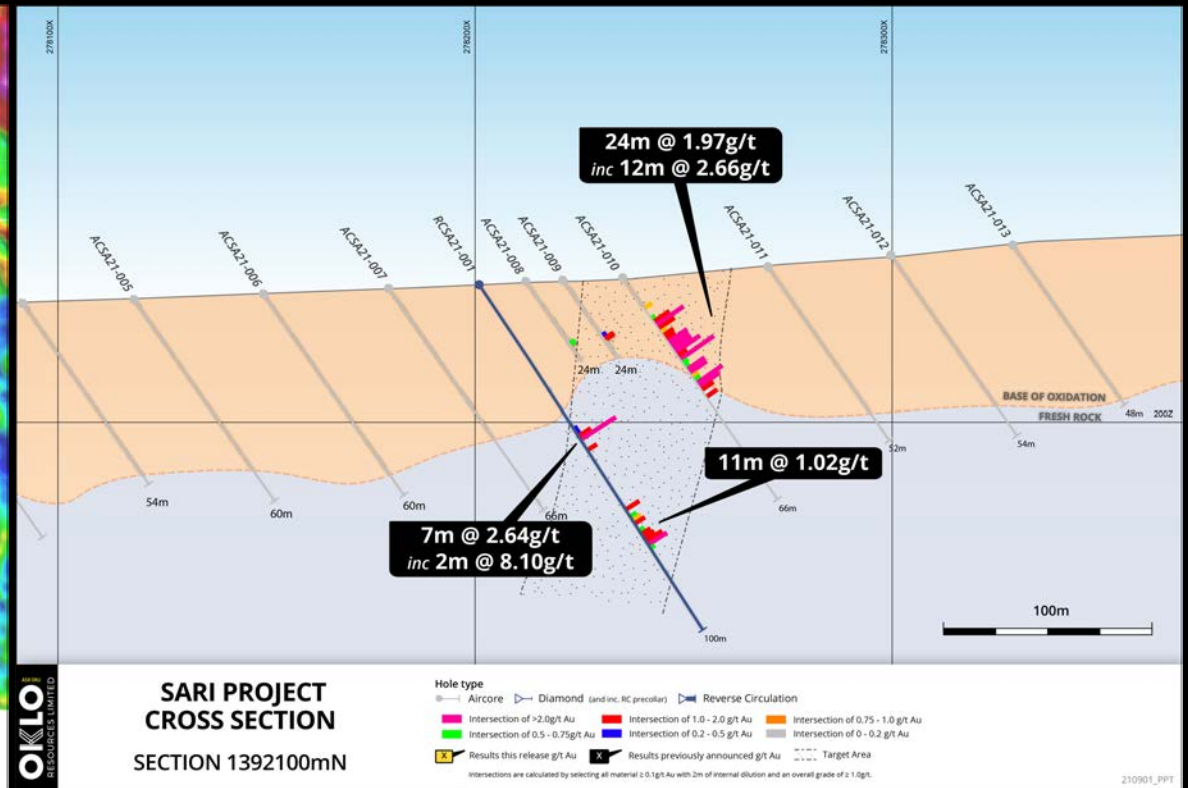
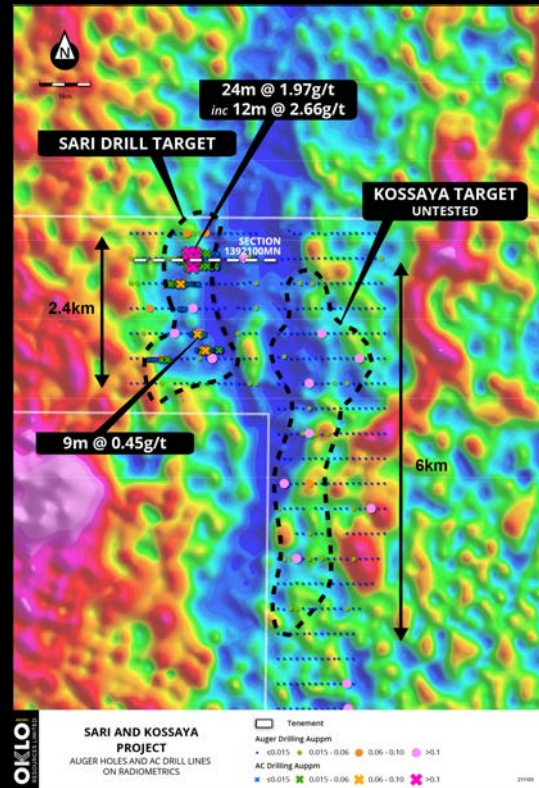
REGIONAL GROWTH OPPORTUNITES

POTENTIAL NEW GOLD DISCOVERY LOCATED 10KM FROM DANDOKO MINERAL RESOURCE

▶ First drilling intersected a wide zone of near surface gold, returning:

▶ **24m at 1.97g/t gold from 12m including 12m at 2.66g/t gold.**

▶ Target associated with a prominent radiometric feature within an interpreted and unexplored intrusive.



NEXT 12 MONTH ACTIVITIES & MILESTONES

RESOURCE GROWTH AND STUDIES

1 RESOURCE GROWTH OPPORTUNITIES

15KM DANDOKO GOLD CORRIDOR

**GROWING SEKO
RESOURCE**

ONGOING DRILL PROGRAMS
9,000m drilling underway

REGIONAL TARGETS

New discoveries at Sari & Kandiole

2 STUDIES

- ▶ **TECHNICAL STUDIES**
MRE enables technical studies to commence
- ▶ **SOCIAL & ENVIRONMENTAL BASELINE**
ESIA to occur in conjunction with studies

MINING LICENSE

SUMMARY

GROWING REAL OUNCES IN WEST AFRICA



RESOURCE

MAIDEN JORC RESOURCE

669kOz AT 1.83g/t,
SIGNIFICANT
GROWTH
POTENTIAL



RESULTS

DANDOKO

SIGNIFICANT
GROWTH
POTENTIAL



STUDIES

ENVIRONMENTAL
AND INTERNAL
SCOPING STUDIES
UNDERWAY



GROWTH

FURTHER
TARGETS
NUMEROUS
UNTESTED PRIORITY
TARGETS

The background image shows a mining operation in a wooded area. A large yellow piece of machinery, possibly a drill or crusher, is the central focus. Several workers wearing hard hats and safety gear are visible around the machine. One worker in a yellow shirt is in the foreground, another in a blue shirt is to the right, and a third in a green shirt is further back. The scene is dusty and appears to be an active work site.

OKLO ASX:OKU
RESOURCES LIMITED

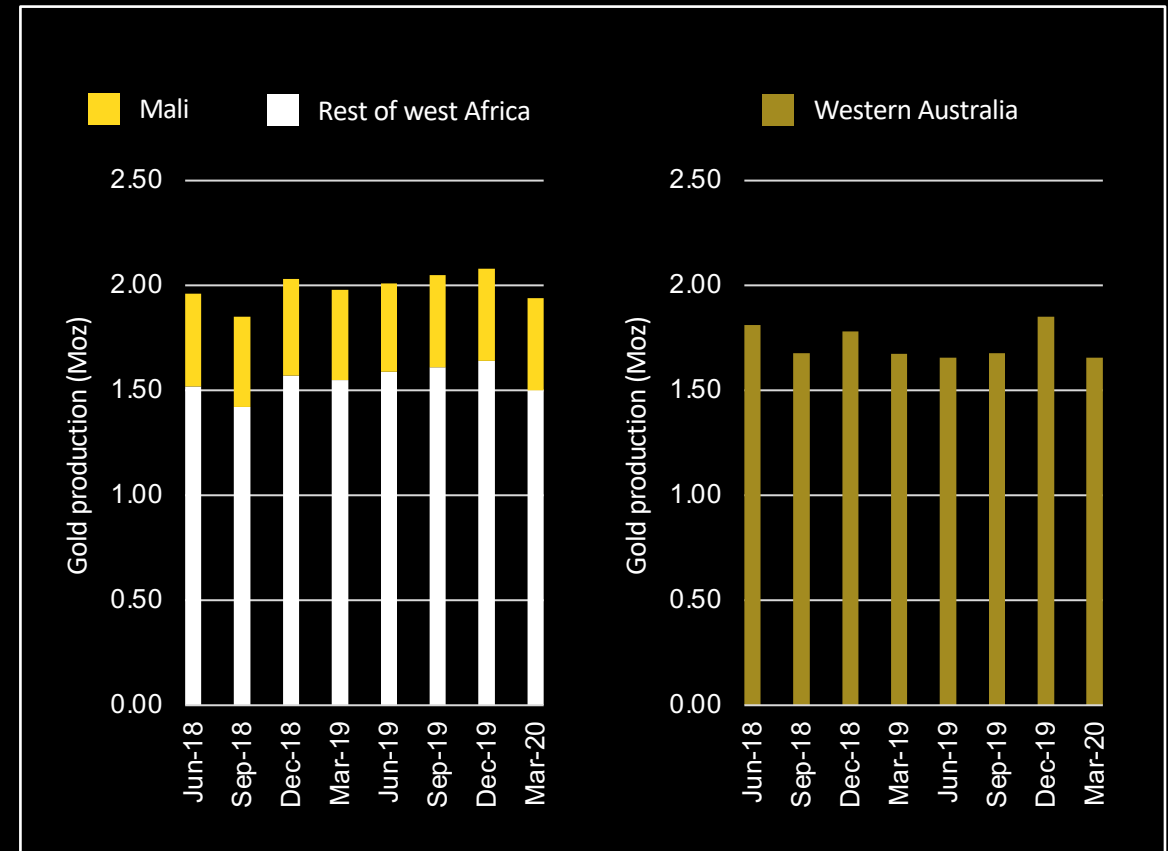
APPENDIX

ersonal use only

OPERATING IN MALI

WEST AFRICA IS A MORE PROLIFIC REGION THAN WESTERN AUSTRALIA. MALI PRODUCES A SIGNIFICANT PROPORTION OF WEST AFRICAN GOLD.

- ▶ Despite periods of political instability, Mali has remained operationally resilient
- ▶ Gold mining accounts for ~10% of Mali's GDP
- ▶ Stable mining code, reviewed every 10 years:
 - 6% royalty
 - 10% government free carry
- ▶ Gold mining operations have not been disrupted under the current transition of Government



Source: CSA Global West African Gold Mines Quarterly, West Australian Department of Mines Resource Data Files

KOUROUFING PROJECT

REGIONAL GROWTH OPPORTUNITES

CENTRAL TARGET 6KM LONG GOLD CORRIDOR

KOME TARGET 4KM LONG GOLD CORRIDOR

▶ First shallow limited drilling returned significant zones of gold mineralisation

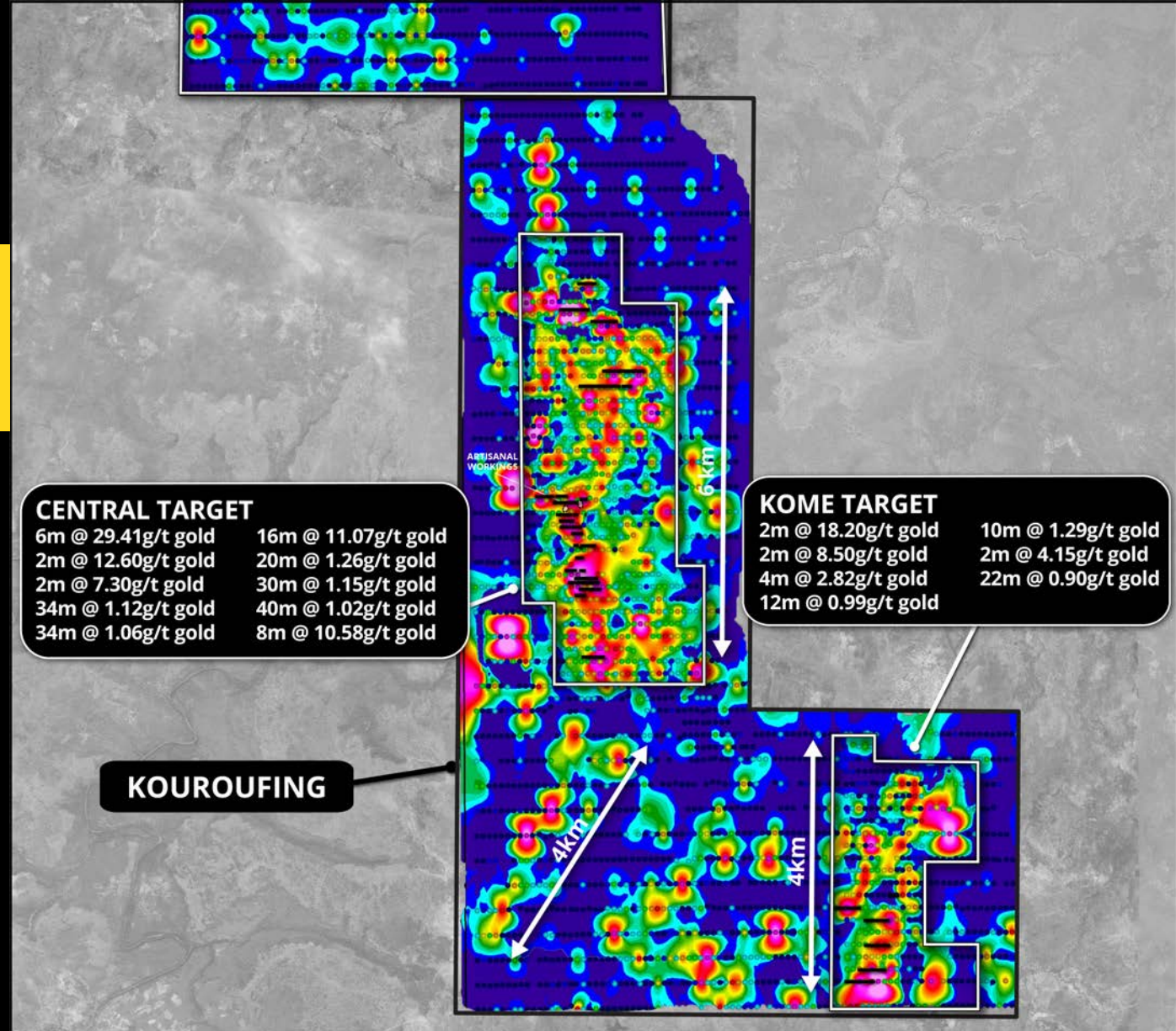
▶ 40m at 1.02 g/t gold

▶ 6m at 29.41 g/t gold inc 2m at 77.4 g/t

▶ 16m at 11.07 g/t gold inc 4m at 42.2 g/t

▶ 30m at 1.02 g/t gold

▶ 34m at 1.12 g/t gold



Personal use only

KANDIOLE PROJECT

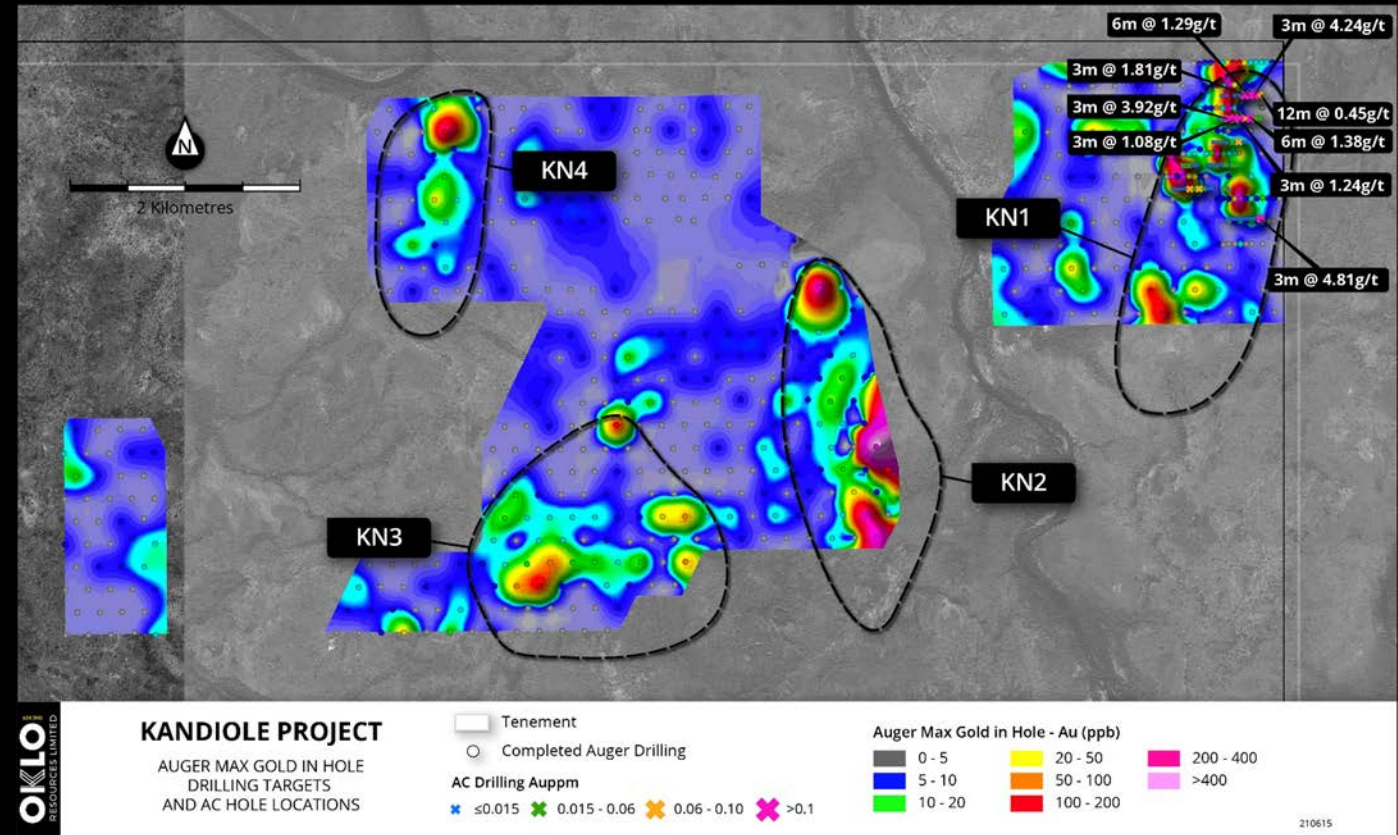
REGIONAL GROWTH OPPORTUNITES

**UNDEREXPLORED 100KM² PROJECT
IN CLOSE PROXIMITY TO FEKOLA
AND BOTO**

▶ **Four large geochemical gold anomalies identified, up to 2.4km long**

▶ **First shallow AC drilling encountered an extensive zone of near surface gold mineralisation at KN1:**

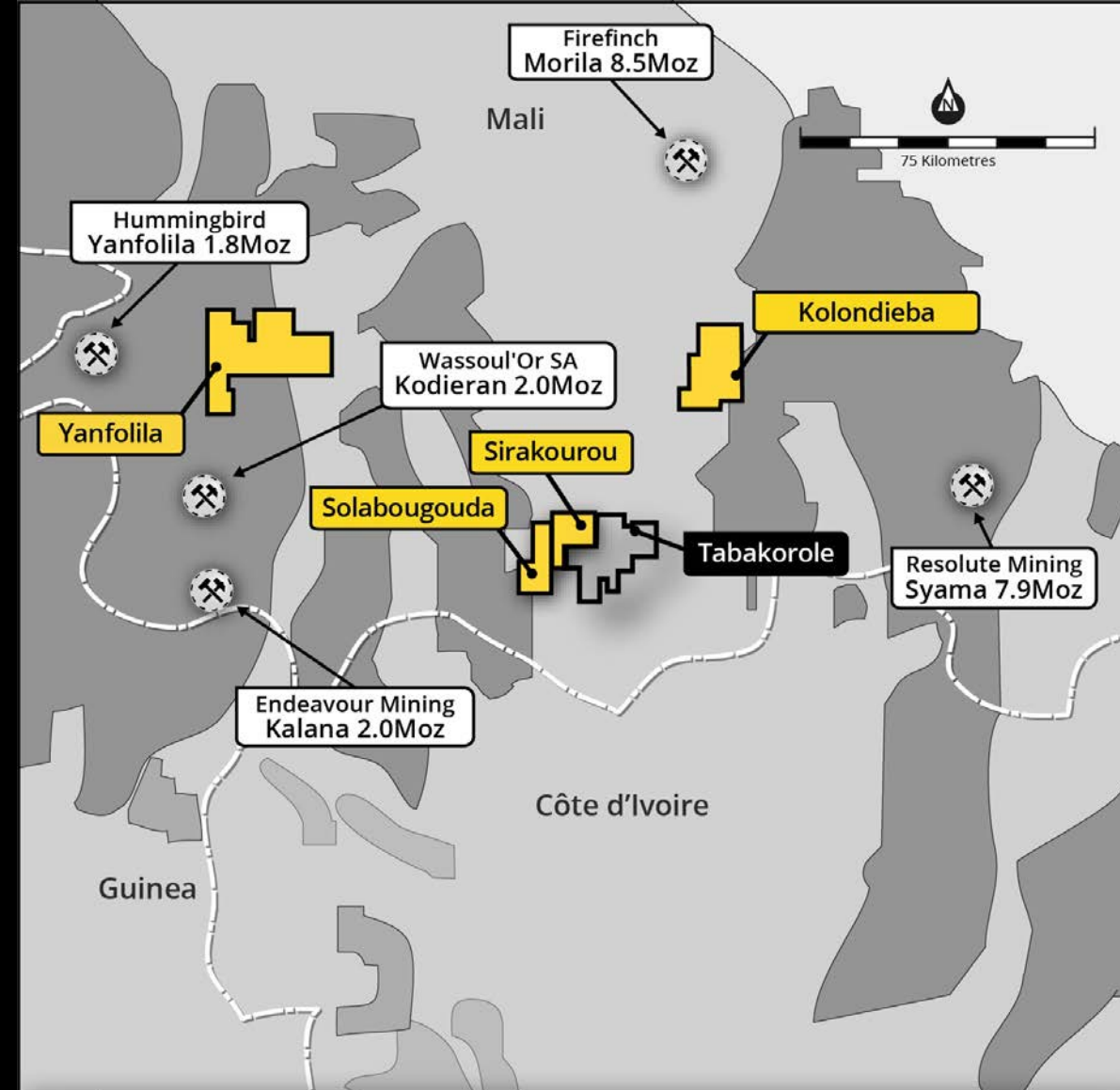
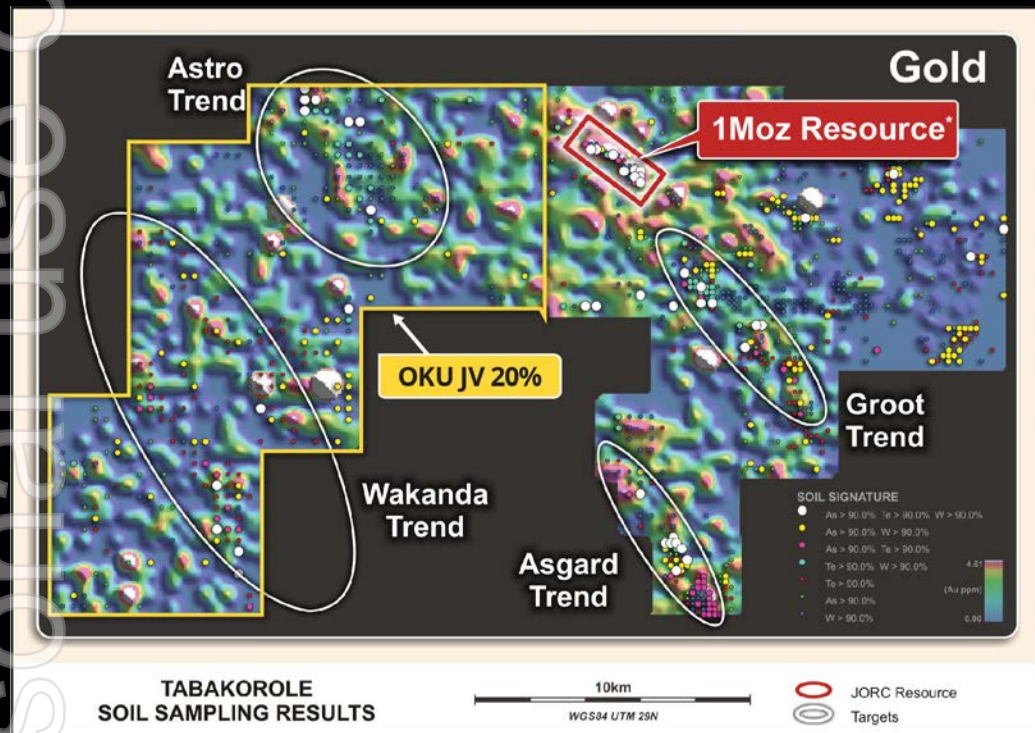
- ▶ **3m at 4.81 g/t gold**
- ▶ **3m at 3.92 g/t gold**
- ▶ **3m at 4.24 g/t gold**
- ▶ **6m at 1.29 g/t gold**
- ▶ **6m at 1.38 g/t gold**



SOUTH MALI PROJECTS

FREE CARRY INTEREST RETAINING UPSIDE

- ▶ Divestment of 80% to Marvel Gold (MVL:ASX)
- ▶ 20% free carried interest to decision to mine
- ▶ 20 million shares upfront¹
- ▶ 20 million shares as deferred consideration²



OKLO RESOURCES LIMITED

SOUTH MALI GOLD PROJECTS

Map Area

Gold Mine	Birimian Volcanic Rocks
Oklo JV 20%	Cover Sequence
Marvel Project	Pre-Birimian Basement
Country Border	Granitoid Rocks
	Younger Cover

25

211103

DANDOKO PROJECT JORC (2012) COMPLIANT MINERAL RESOURCE ESTIMATE

DEPOSIT	MEASURED			INDICATED			INFERRED			TOTAL		
	Tons (Mt)	Gold grade (g/t)	Gold (kOz)	Tons (Mt)	Gold grade (g/t)	Gold (kOz)	Tons (Mt)	Gold grade (g/t)	Gold (kOz)	Tons (Mt)	Gold grade (g/t)	Gold (kOz)
SEKO	5.57	2.09	374.2	2.40	1.69	130.6	2.13	1.49	101.7	10.09	1.87	606.5
KOKO	-	-	-	0.73	0.97	22.8	0.02	0.73	0.4	0.74	0.97	23.2
DIABAROU	-	-	-	-	-	-	0.34	2.45	26.7	0.34	2.45	26.7
DISSE	-	-	-	-	-	-	0.15	2.57	12.1	0.15	2.57	12.1
TOTAL	5.57	2.09	374.2	3.13	1.52	153.5	2.63	1.67	140.9	11.34	1.83	668.5

Open pit optimisation included an overall allowance of 10% for dilution and 7% for ore loss, utilised using appropriate Malian royalties and taxes, metallurgical recovery data, mining, production, and environmental costs from nearby producing mines. A low pit wall angle of 38° within the deep oxide profile observed and a 50° slope in fresh rock. Material within a US\$2,000/oz gold price based optimised pit incorporating the above factors provides a positive return for all material reported within the resource, indicating a reasonable prospect for eventual economic extraction. Refer ASX announcement dated 30 March 2021.

METALLURGICAL TESTWORK PROGRAM

SK2 TEST WORK - APRIL 2020

SEKO CYANIDE LEACH & FLOTATION RECOVERY RESULTS

<i>Grind size: Oxide 75 µm, Trans & Fresh 53 µm</i>	OXIDE	TRANS.	FRESH
LEACH RECOVERY (%)	94.1%	84.7%	88.0%
LEACH FEED (g/t)	4.41	5.99	2.76
FLOTATION RECOVERY (%)	NA	95.3%	91.3%
CONSUMPTION - NACN (kg/t)	0.15	0.10	0.15
CONSUMPTION - LIME (kg/t)	3.19	1.07	1.14

SEKO ROCK PARAMETER RESULTS

	OXIDE	TRANS.	FRESH
PRODUCT SIZE (µM)	68	83	77
WORK INDEX (kwh/t)	10.2	15.2	16.0
ABRASION INDEX	0.05	0.31	0.20

SK1 TEST WORK - MAY 2021

SEKO CYANIDE LEACH & FLOTATION RECOVERY RESULTS

<i>Grind size: Oxide & Trans. at both 75 µm / 106 µm</i>	OXIDE	TRANS.
LEACH RECOVERY (%)	97.2% / 97.4%	75.6% / 81.4%
LEACH FEED (g/t)	7.51 / 7.44	5.82 / 6.31
FLOTATION RECOVERY (%)	NA	96.6%
CONSUMPTION - NACN (kg/t)	0.21 / 0.18	0.87 / 0.95
CONSUMPTION - LIME (kg/t)	1.32 / 0.98	0.69 / 0.73

PROJECT DEVELOPMENT PIPELINE

PROCESSING EXPLORATION





OKLO

RESOURCES LIMITED

SIMON TAYLOR

Managing Director

M: +61 409 367 460

E: staylor@okloresources.com

AUSTRALIAN OFFICE

Level 5, 56 Pitt Street

Sydney NSW 2000

T: +61 2 8319 9233

okloresources.com

MALI OFFICE

Operating as Africa Mining Sarl

Rue 841, Porte 57

BP 366 Faladje Sema Bamako

ersonal use only

