

ersonal use only

TZMI Virtual Congress 2021

November 2021



BASE
RESOURCES



Disclaimer & Important Notices



This document has been prepared by Base Resources Limited (**Base Resources**). Its release has been authorised by Base Resources' Disclosure Committee. Information in this document should be read in conjunction with other announcements made by Base Resources to ASX, particularly Base Resources' announcement on 27 September 2021 "DFS2 enhances scale and economics of the Toliara Project" (**DFS2 Announcement**) and Base Resources' announcements on 3 September 2021 "Bumamani PFS supports extension of Kwale mine life to mid-2024" and "Further supporting information for Bumamani PFS" (**Bumamani PFS Announcements**). Base Resources' ASX announcements are available at <https://baseresources.com.au/investors/announcements>.

DFS2 Announcement

Slides 11 to 14 disclose the summary outcomes of DFS2. The DFS2 Announcement discloses the material assumptions and underlying methodologies adopted for deriving these outcomes, including the production information and forecast financial information. It also discloses key pre and post FID risks in respect of the Toliara Project. Base Resources confirms that all the material assumptions underpinning the production information and forecast financial information disclosed in the DFS2 Announcement continue to apply and have not materially changed.

Bumamani PFS Announcements

Slides 7 discloses the summary outcome of the Bumamani PFS. The Bumamani PFS Announcements disclose the material assumptions and underlying methodologies adopted for deriving this outcome. Base Resources confirms that all the material assumptions underpinning the production information and forecast financial information disclosed in the Bumamani PFS Announcements continue to apply and have not materially changed.

Forward-looking statements

Certain statements in or in connection with this document contain or comprise forward looking statements. Such statements include, but are not limited to, statements with regard to capital cost, capital expenditure capacity, future production and grades and financial performance and may be (but are not necessarily) identified by the use of phrases such as "will", "expect", "anticipate", "believe" and "envisage". By their nature, forward looking statements involve risk and uncertainty because they relate to events and depend on circumstances that will occur in the future and may be outside Base Resources' control.

Accordingly, results could differ materially from those set out in the forward-looking statements as a result of, among other factors, changes in economic and market conditions, success of business and operating initiatives, changes in the regulatory environment and other government actions, fluctuations in product prices and exchange rates and business and operational risk management. Subject to any continuing obligations under applicable law or relevant stock exchange listing rules, Base Resources undertakes no obligation to update publicly or release any revisions to these forward-looking statements to reflect events or circumstances after today's date or to reflect the occurrence of unanticipated events.

Not advice or an offer and other

Nothing in this document constitutes investment, legal or other advice. You must not act on the basis of any matter contained in this document but must make your own independent investigation and assessment of Base Resources and obtain any professional advice you require before making any investment decision based on your investment objectives and financial circumstances.

This document does not constitute an offer, invitation, solicitation, advice or recommendation with respect to the issue, purchase or sale of any security in any jurisdiction. In particular, this document does not constitute an offer to sell, or a solicitation of an offer to buy, securities in the United States or to any "US Person" (as defined in the US Securities Act of 1933). This document may not be distributed or released in the United States or to, or for the account of, any US Person.

No representation or warranty, express or implied, is made as to the fairness, accuracy or completeness of the information contained in this document (or any associated presentation, information or matters). To the maximum extent permitted by law, Base Resources and its related bodies corporate and affiliates, and their respective directors, officers, employees, agents and advisers, disclaim any liability (including, without limitation, any liability arising from fault, negligence or negligent misstatement) for any direct or indirect loss or damage arising from any use or reliance on this document or its contents, including any error or omission from, or otherwise in connection with, it.

All references to currency (\$ or US\$) are to United States Dollars unless otherwise stated

Australian based, African focused, producer



ersonal use only

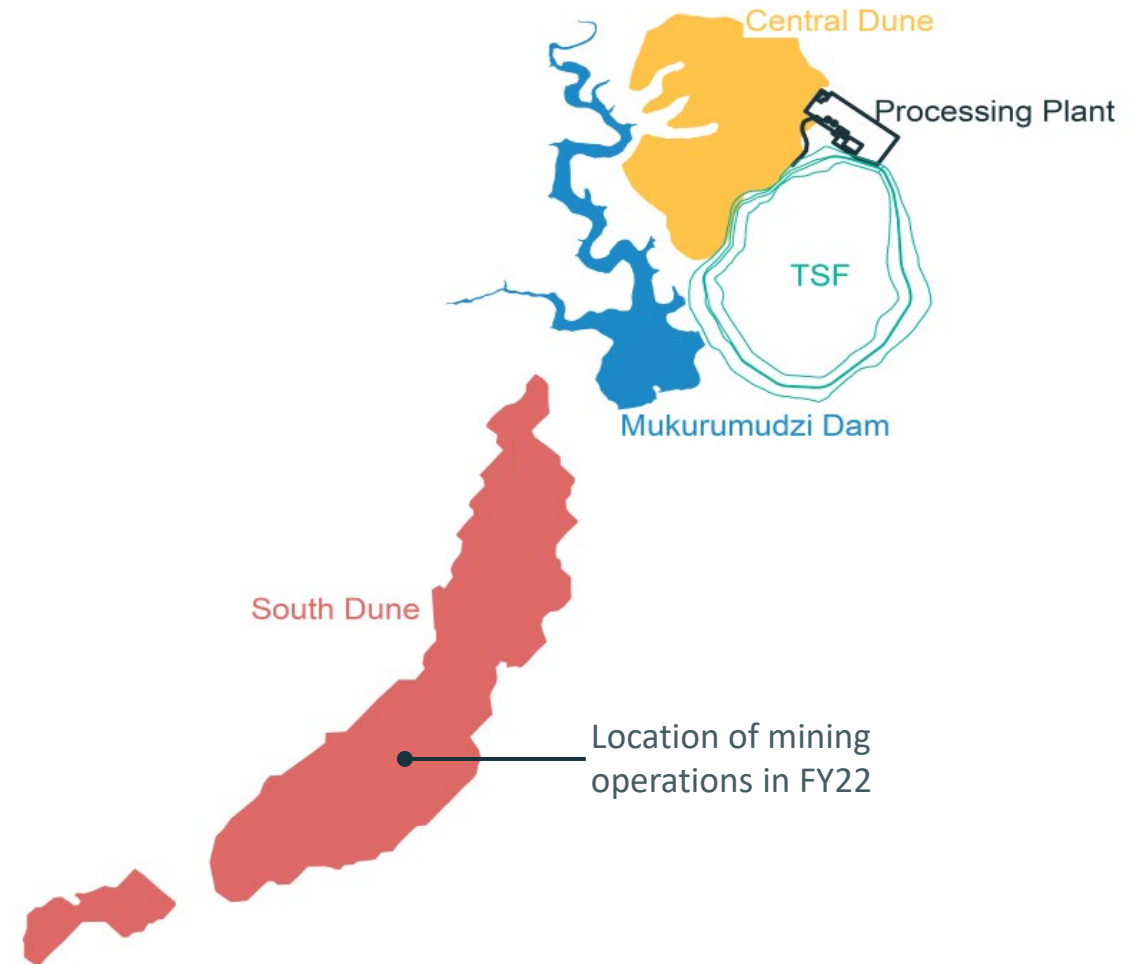
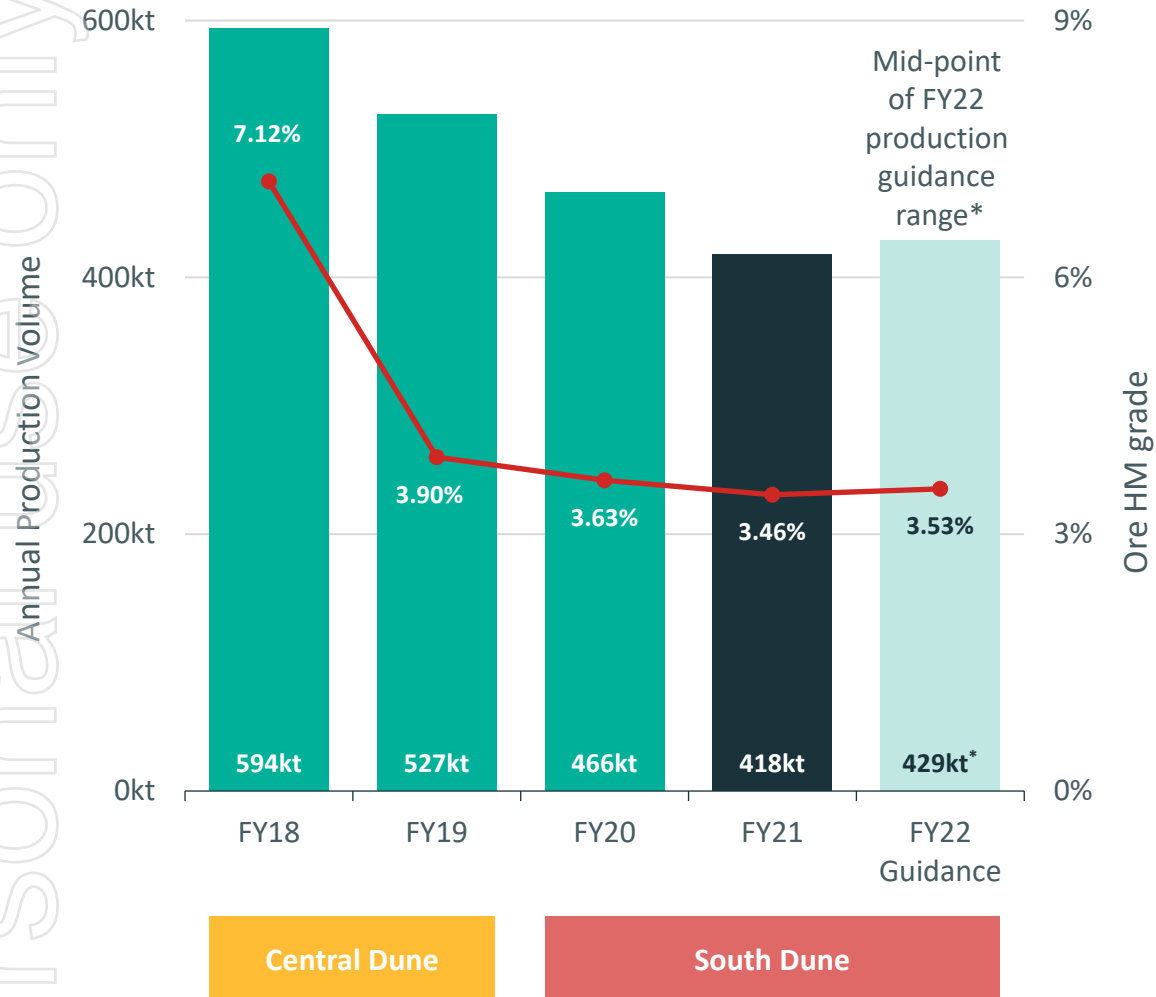


ersonal use only

The foundation - The Kwale Operation

Video available at www.basetitanium.com

Consistent delivery to plan

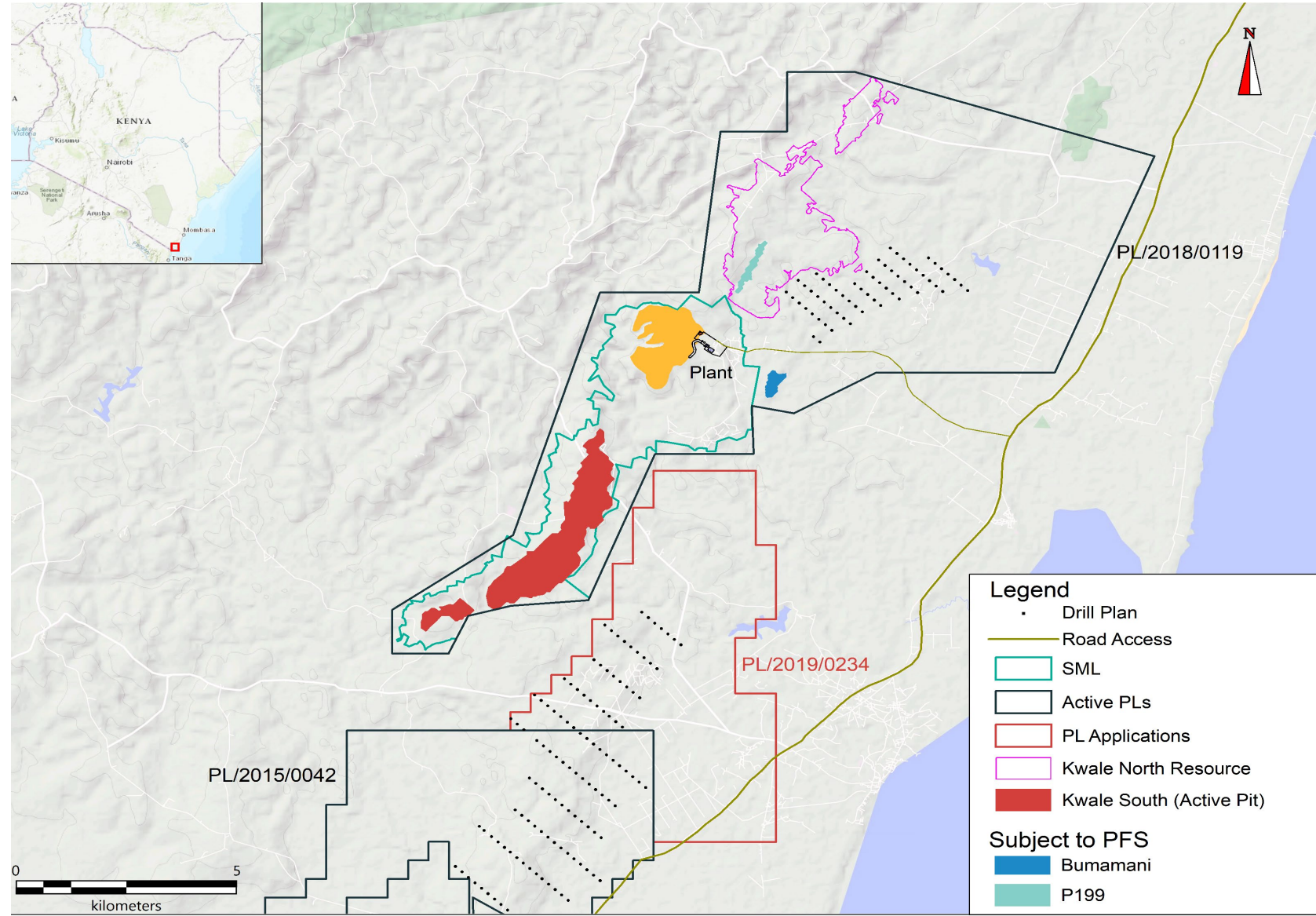


SML extension takes mine life to Dec 2023...

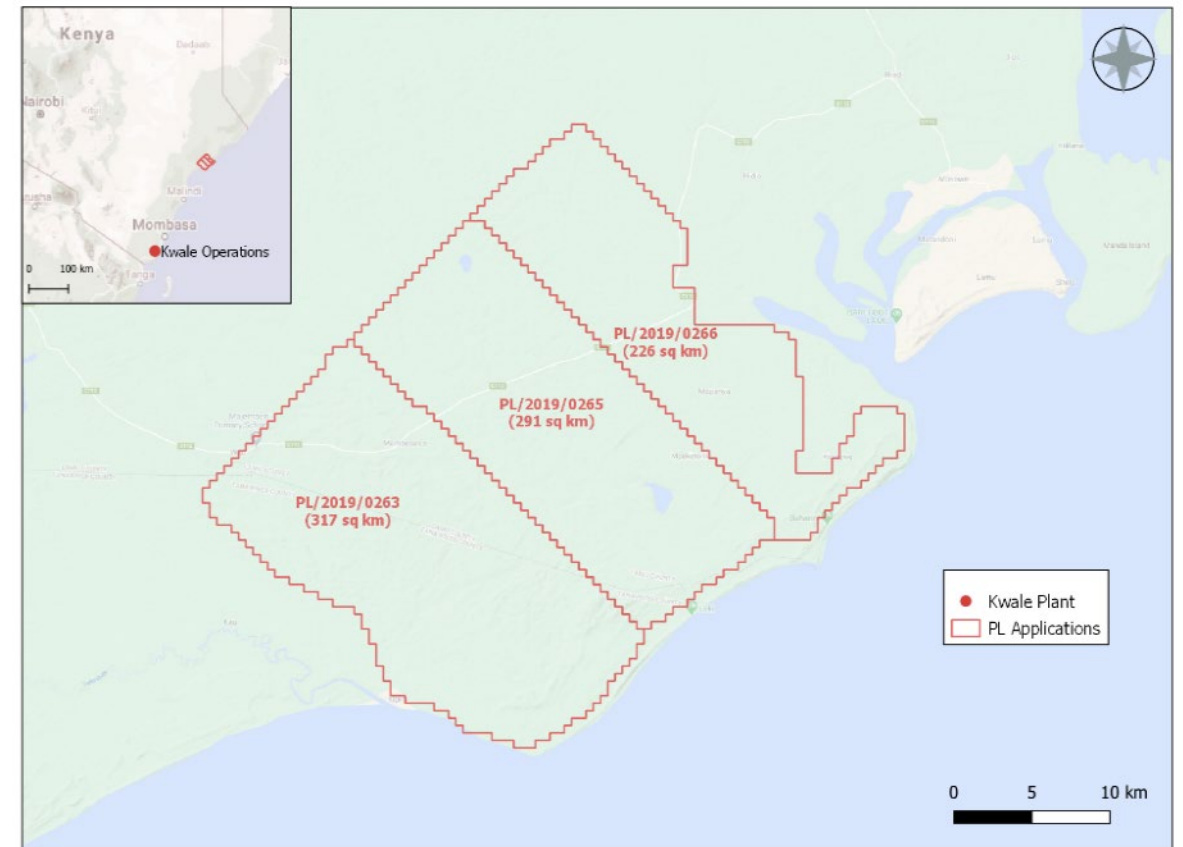
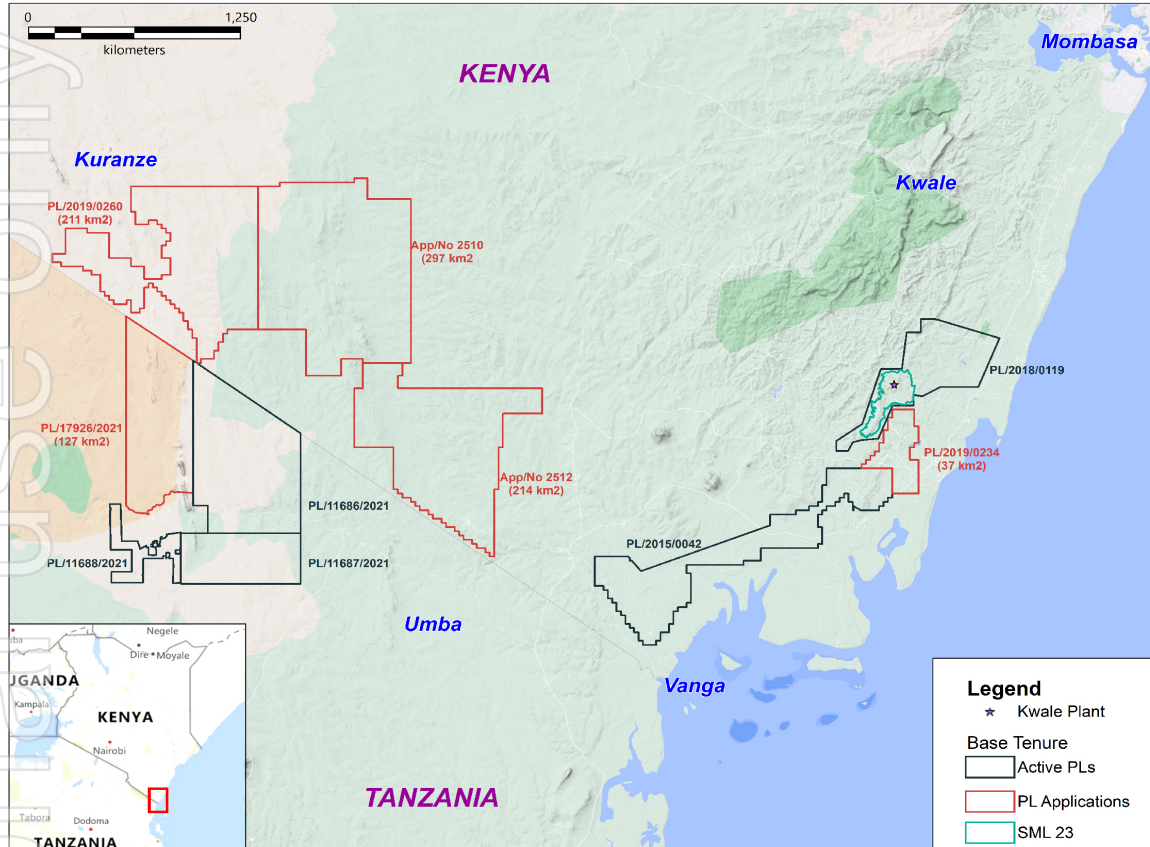


Kwale special mining lease extended to incorporate additional Kwale South Dune Ore Reserves, extending mine life to December 2023.

Bumamani PFS supports a further mine life extension to mid 2024.



...with opportunities further afield



Three Tanzanian exploration licences granted, with the fourth expected shortly and exploration activities now underway. Base Resources is engaging with the Government of Kenya and other stakeholders to have the November 2019 moratorium on the issuance of prospecting licenses lifted and issuance of mineral rights recommenced.

ersonal use only

Toliara – a world class development opportunity

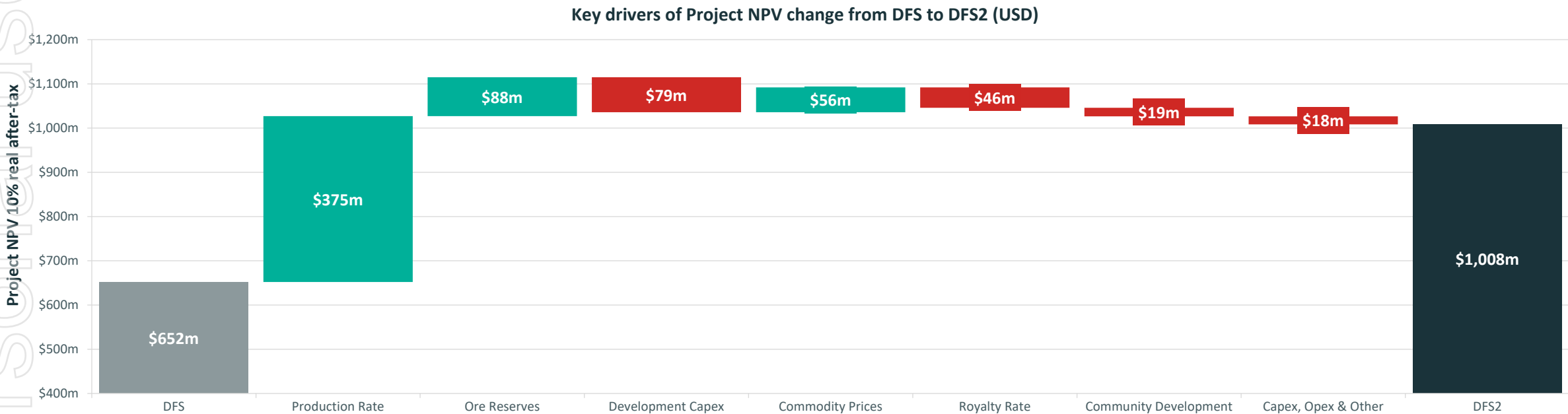
Project video available at
www.baseresources.com.au

DFS2 enhances Toliara Project scale...



Since the release of the DFS in 2019, the Ranobe Mineral Resources and Ore Reserves estimates have substantially increased, which, when combined with the attractive long-term supply-demand outlook, have provided the opportunity to enhance project value by increasing its scale.

- Ranobe Ore Reserves estimate increased to 904Mt at an average heavy mineral grade of 6.1% – extending initial mine life to 38 years.
- Increased scale of Stage 2 lifts mining rates to ~25Mtpa (33% higher than DFS) and adds ~47% to MSP production capacity (to 220tph).
- Stage 1 capex increased to US\$520m (up US\$78m), primarily due to input cost escalation, while the larger scale of Stage 2 increases capex to US\$137m (up US\$68m).

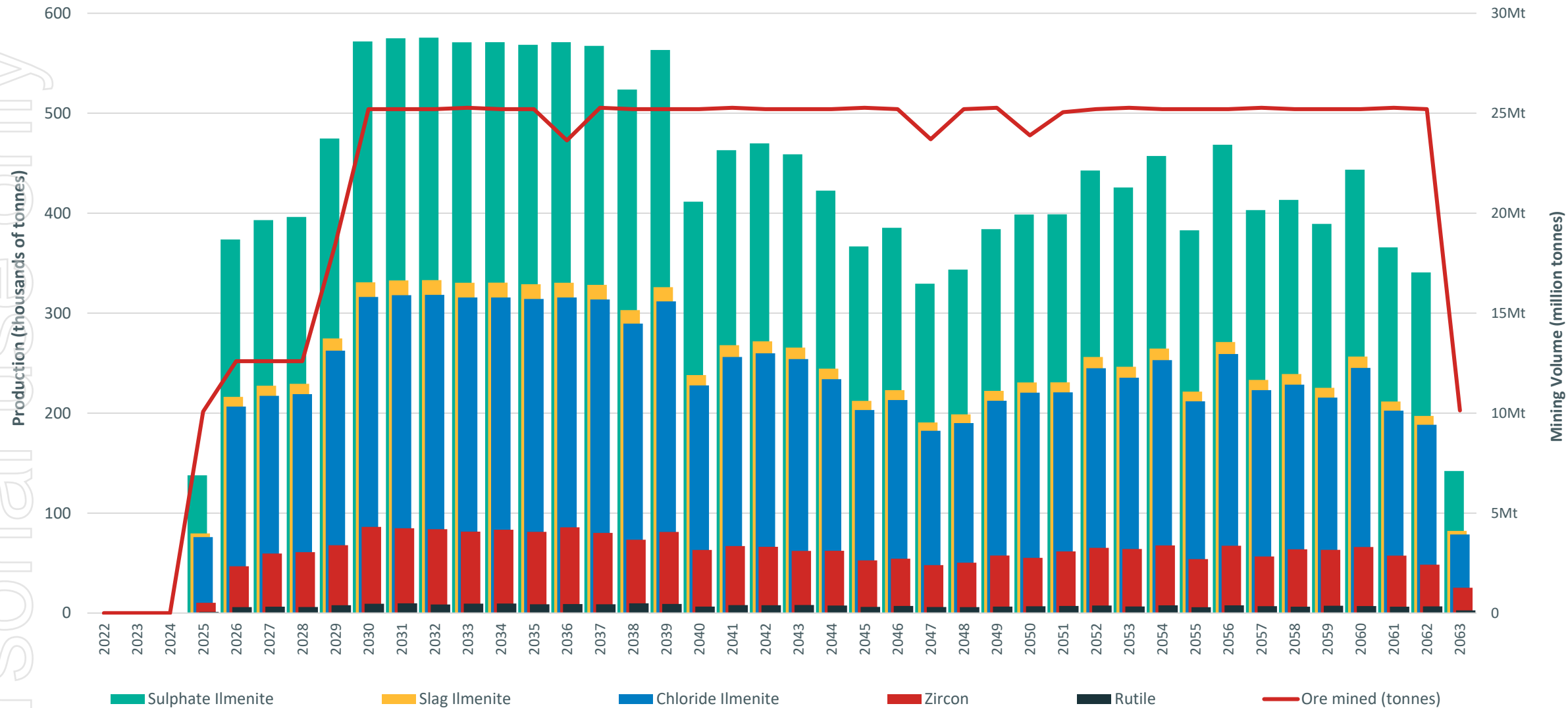


Refer to the Appendix to this document for further information about the Ranobe Ore Reserves estimate.

...lifting production...



23% increase in average annual production to 960kt ilmenite, 66kt zircon and 8kt rutile over the life of mine.



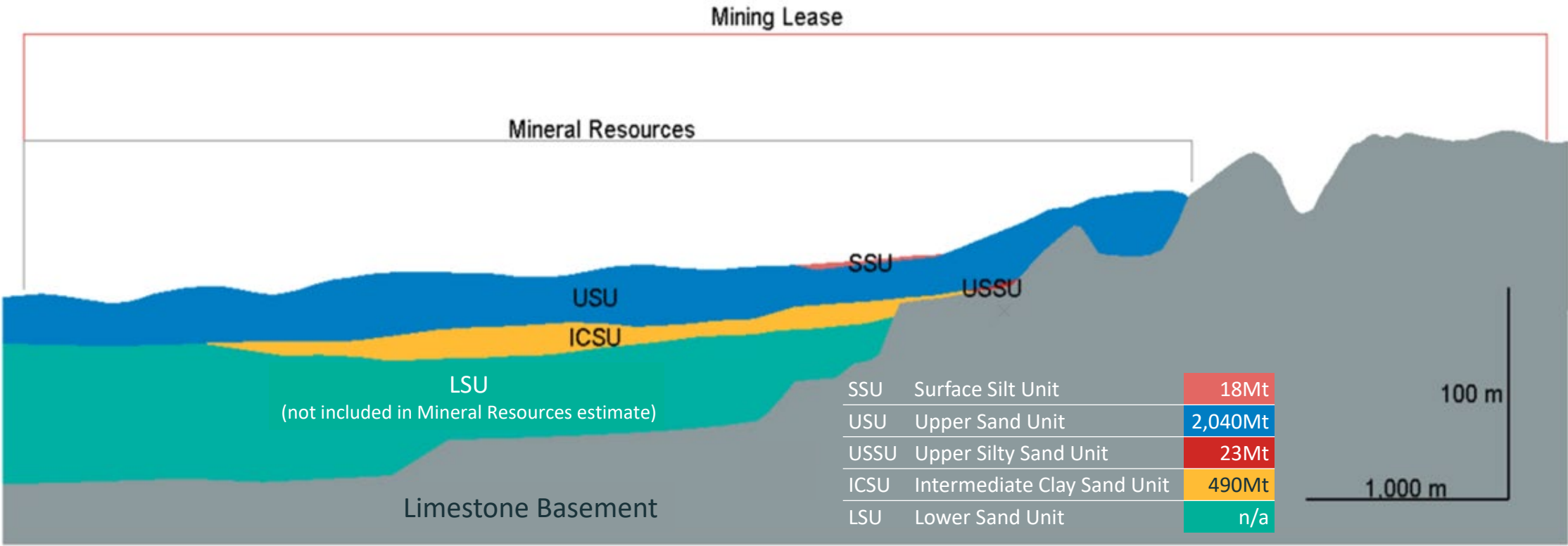
... and improving already strong economics



- 55% increase in post-tax / pre-debt (real) NPV @ 10% discount rate to US\$1,008m.
- Average revenue to cost of sales ratio improves to 3.5.
- LOM free cash flow increased by 60% to US\$5.9 billion, with first 10 years averaging US\$210m per annum.
- Annual averages (excluding first and last partial operating years):
 - Revenue US\$317m - a 28% increase.
 - Operating costs of US\$90m (inclusive of 4% royalties) higher than DFS due to increased scale of operation and royalties.
 - EBITDA US\$219m – 34% higher.
 - Free cash flow US\$174m – 32% higher.

| | Unit | DFS2 | DFS |
|--|------------------|-------|-------|
| NPV ₁₀ (discount rate of 10%), post tax, real | US\$ millions | 1,008 | 652 |
| IRR | % | 23.8 | 21.4 |
| Initial (Stage 1) capex | US\$ millions | 520 | 442 |
| Construction period (Stage 1) | Months | 27 | 26 |
| Stage 2 capex | US\$ millions | 137 | 69 |
| Construction period (Stage 2) | Months | 21 | 12 |
| Capital payback period (Stage 1 + 2) | Years | 4.5 | 4.3 |
| Life of mine | Years | 38 | 33 |
| LOM operating costs + royalty | US\$/t ore mined | 3.78 | 4.31 |
| LOM operating costs + royalty (A) | US\$/t produced | 88 | 94 |
| LOM revenue (B) | US\$/t produced | 306 | 295 |
| LOM cash margin (B-A) | US\$/t produced | 218 | 201 |
| LOM revenue : cost of sales ratio (B/A) | Ratio : 1 | 3.5 | 3.2 |
| LOM free cash flow | US\$ millions | 5,922 | 3,692 |

Toliara Project Mineral Resources increased...



Ranobe Mineral Resources - 2,580Mt @ 4.3% HM

- 68% increase in contained HM to 111Mt
- Measured & Indicated of 1,390Mt @ 5.1% HM
- LSU yet to be incorporated in estimate

Ranobe Ore Reserves - 904Mt @ 6.1% HM

- 45% increase in contained HM to 55Mt at 6.1%
- 50% of current Mineral Resources contained HM
- Only includes material from the SSU and USU

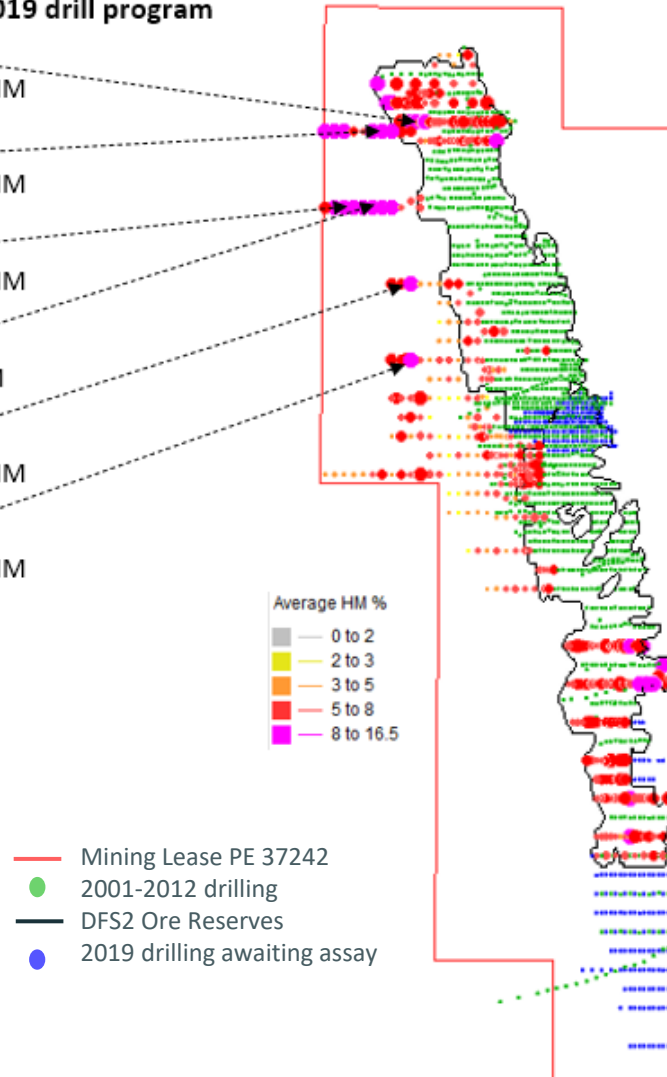
Refer to the Appendix to this document for further information about the Ranobe Mineral Resources and Ranobe Ore Reserves estimates.

...with further expansion and value potential



Significant results from 2019 drill program

- 71.5m @ 12.2% HM
- with LSU of 41.5m @ 17.6% HM
- 72m @ 11.6% HM
- with LSU of 43.5m @ 16.5% HM
- 81m @ 15.7% HM
- with LSU of 67.5m @ 18.3% HM
- 87m @ 13.9% HM
- with LSU of 69m @ 16.4% HM
- 78m @ 9.1% HM
- with LSU of 46.5m @ 13.8% HM
- 87m @ 9.1% HM
- with LSU of 52.5m @ 13.8% HM



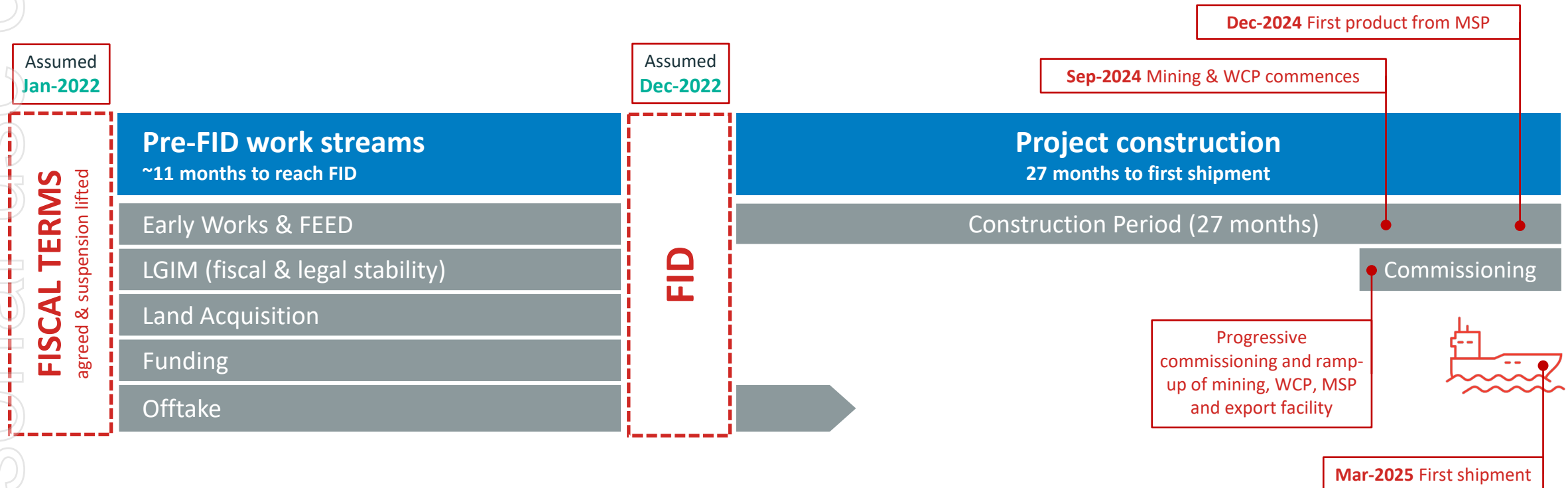
- The 2019 drill program identified significant heavy mineral intercepts in the LSU in the NW sector.
- Further drilling, and subsequent resource definition, targeting high-grade LSU zones in the NW sector to be completed as access to site becomes available.
- Mineral Resources estimate contains 2.0% monazite.
 - Represents a significant potential source of REO.
 - To be investigated in future studies.
- Higher garnet levels are evident in the LSU.
 - Potentially suitable for the waterjet and blast markets.

Notes:

- For further information in relation to the drill results on this slide, refer to Base Resources' announcement on 21 January 2020 "Toliara Project drill assays reveal significant high-grade mineralisation" available at <https://baseresources.com.au/investors/announcements>. Base Resources confirms that it is not aware of any new information that materially affects the information included in that announcement.
- The existing mining tenure, *Permis D'Exploitation* 37242, does not currently provide the right to exploit monazite or garnet.

Toliara Project indicative timeline

Planned FID has been delayed due to COVID travel restrictions and the suspension of on-ground activities. Once fiscal terms are agreed and this suspension is lifted, there will be approximately 11 months' work to complete prior to FID, including finalising financing, completing the land acquisition process and concluding major construction contracts. Some resumption of international travel will also be required to complete a significant portion of this work. We maintain readiness to accelerate progress when conditions support.



Positioned for growth

- Team with a **track record of delivery**.
- Consistent, **high cash flow Kwale Operations**, with extension potential.
- Reputation for **excellence in safety, community and environment**.
- A **robust financial position from** which to grow the business and **deliver returns** to shareholders.
- Market outlook supporting a **clear need for new supply**.
- A **world class development asset** in the long-life Toliara Project.





BASE
RESOURCES

ersonal use only



A. Level 3, 46 Colin Street, West Perth WA 6005
PO Box 928, West Perth BC 6872, Australia

Ph. +618 9413 7400

F. +618 9322 8912

E. info@baseresources.com.au

baseresources.com.au

For further information contact:

James Fuller, Manager – Communications and Investor Relations

Ph. +618 9413 7426

M. +61 488 093 763

E. jfuller@baseresources.com.au

ersonal use only

Appendix

Ranobe Ore Reserves and Mineral Resources



| Category | Material | HM | HM | SL | OS | HM Assemblage as % of HM | | | | | |
|--|--------------|------------|------------|------------|------------|--------------------------|------------|------------|------------|------------|------------|
| | | | | | | ILM | RUT | LEUC* | ZIR | MON^ | GARN^ |
| | (Mt) | (Mt) | (%) | (%) | (%) | (%) | (%) | (%) | (%) | (%) | (%) |
| Mineral Resources estimate¹ at 27 September 2021 | | | | | | | | | | | |
| Measured | 597 | 36 | 6.1 | 4.3 | 0.2 | 74 | 1.0 | 1.0 | 5.9 | 1.9 | 2.2 |
| Indicated | 793 | 35 | 4.4 | 7.1 | 0.5 | 71 | 1.0 | 1.0 | 5.9 | 2.0 | 3.6 |
| Inferred | 1,190 | 39 | 3.3 | 9.7 | 0.6 | 69 | 1.0 | 1.0 | 5.8 | 2.0 | 4.3 |
| Total | 2,580 | 111 | 4.3 | 7.7 | 0.4 | 71 | 1.0 | 1.0 | 5.9 | 2.0 | 3.4 |
| Ore Reserves estimate at 27 September 2021 | | | | | | | | | | | |
| Proved | 433 | 30 | 6.9 | 3.8 | 0.1 | 75 | 1.0 | 1.0 | 6.0 | | |
| Probable | 472 | 25 | 5.3 | 3.9 | 0.2 | 72 | 1.0 | 1.0 | 5.8 | | |
| Total | 904 | 55 | 6.1 | 3.8 | 0.1 | 73 | 1.0 | 1.0 | 5.9 | | |

- Notes:**
- 1) Mineral Resources estimated at a 1.5% HM cut-off grade.
 - 2) Table subject to rounding differences.
 - 3) Mineral Resources are reported inclusive of Ore Reserves.
- ^ Monazite and Garnet excluded from the Ore Reserves estimate because the existing mining tenure, PE 37242, does not currently provide the right to exploit these products.
- *Recovered Leucoxene will be split between rutile and chloride ilmenite products depending on product specification requirements.

For further information on the Ranobe deposit Mineral Resources and Ore Reserves estimates, refer to Base Resources' announcements on 27 September 2021 "Updated Ranobe Mineral Resources and Ore Reserves estimates", which is available at <https://baseresources.com.au/investors/announcements/>. Base Resources confirms that it is not aware of any new information or data that materially affects the information included in the 27 September 2021 announcement and all material assumptions and technical parameters underpinning the estimates in the 27 September 2021 announcement continue to apply and have not materially changed.