

19 November 2021

WiseTech Global 2021 AGM – Chair and CEO addresses

Today's AGM addresses by WiseTech Global Chair, Andrew Harrison, and Founder and CEO, Richard White, are attached, along with the associated presentation slides.

Further information about the virtual AGM, including the Notice of AGM, can be accessed online at www.wisetechglobal.com/investors/annual-general-meetings/

//

Authorised for release to ASX by Katrina Johnson, General Counsel.

Contact information**Investor Relations and Media**

INVESTOR RELATIONS:

Ross Moffat +61 412 256 224

MEDIA

Helen Karlis +61 419 593 348

About WiseTech Global

WiseTech Global is a leading developer and provider of software solutions to the logistics execution industry globally. Our customers include over 18,000¹ of the world's logistics companies across more than 165 countries, including 41 of the top 50 global third-party logistics providers and 24 of the 25 largest global freight forwarders worldwide². Our flagship platform, CargoWise, forms an integral link in the global supply chain and executes over 72 billion data transactions annually.

Our mission is to change the world by creating breakthrough products that empower those that own, enable and operate the supply chains of the world. At WiseTech, we are relentless about innovation, adding over 4,300 product enhancements to our global platform in the past five years while bringing meaningful continual improvement to the world's supply chains. Our breakthrough software solutions are renowned for their powerful productivity, extensive functionality, comprehensive integration, deep compliance capabilities, and truly global reach. For more information about WiseTech Global or CargoWise, please visit www.wisetechglobal.com and [cargowise.com](http://www.cargowise.com)

¹ Includes customers on CargoWise and platforms of acquired businesses whose customers may be counted with reference to installed sites

² Armstrong & Associates: Top 50 Global 3PLs & Top 25 Global Freight Forwarders ranked by 2020 logistics gross revenue/turnover and freight forwarding volumes

Chair's address

2021 was another successful year for WiseTech, as we delivered both strong financial performance and continued progress on our strategy to become the operating system for global logistics.

Today, I will touch on our financial performance, solid capital position and governance framework before I hand over to our Founder and Chief Executive Officer, Richard White, who will provide further detail on our strategic progress, including the six global rollouts we secured in FY21 and our recent signing of Fedex.

Market context

To begin, I would note that the overall market conditions in global logistics in FY21 continued to be impacted by ongoing COVID restrictions, with consumer demand for services shifting to demand for goods, supported by various country specific fiscal stimulus measures, boosting demand for global trade.

However, limited sea freight capacity, port access issues and container availability challenges, coupled with reduced air freight bellyhold capacity caused by passenger travel restrictions, have resulted in constrained capacity, congestion, disruption and higher freight rates.

Whilst higher freight rates do not translate into immediate revenue growth for WiseTech, we are benefitting from the acceleration in longer-term structural changes that these conditions create, in particular through digital transformation as logistics providers fast track the replacement of their in-house legacy systems with integrated global software such as CargoWise.

Financial performance

In the context of these market conditions, I am pleased to report that WiseTech reported another year of strong growth, delivering record revenue at the top end of our guidance and EBITDA exceeding guidance.

Our business delivered Total Revenue of \$507.5 million for the year, representing 18% growth on FY20.

Importantly, our CargoWise offering continued to achieve strong growth delivering FY21 revenue of \$331.6 million, up 26% on FY20, reflecting increased usage by existing customers and growth from new customers.

Recurring revenue was strong comprising 90% of our Total Revenue, up one basis point on FY20, providing us with a stable and predictable long-term revenue stream, and CargoWise customer attrition rate remained below 1% for the ninth consecutive year.

Our strategic acquisitions also contributed to our revenue growth, with revenue attributable to acquisitions up 6% in FY21 to \$175.9 million, which included the completion of one small strategic acquisition in Asia during the year.

EBITDA in FY21 was \$206.7 million, up 63% on the prior year, and our EBITDA margin was strong at 41%, reflecting increasing operating leverage as revenue grows and cost reductions are achieved through organisation-wide efficiencies and the extraction of acquisition synergies.

I note that we have not received any material benefit from any COVID-19 government support programs globally.

Our statutory Net Profit After Tax (NPAT) for the year was \$108.1 million, down 33% on the prior year, reflecting fair value adjustments in FY20 from changes to acquisition contingent consideration.

However, our FY21 Underlying NPAT of \$105.8 million was up 101% on the prior corresponding period, demonstrating the ability of our business model to deliver revenue growth and earnings expansion.

Financial strength

Our financial position is robust, supported by a strong balance sheet and strong cash flows.

Cash as at 30 June 2021 was \$315.0 million, with no outstanding debt excluding lease liabilities. We recently completed a refinancing of our debt facility and now have a new, unsecured four-year \$225 million bi-lateral facility in place, supported by six banks, providing a solid financial foundation for future growth.

Our operating cash flow of \$229.9 million was up 57% on FY20 and free cash flow of \$139.2 million was up 149% on FY20, demonstrating the highly cash generative nature of our business and the strength of WiseTech's underlying operating model.

Dividends

In recognition of the continued strength of WiseTech's business, the Board declared a fully franked final dividend of 3.85 cents per share, up 141% on FY20.

Our total dividend for the year was 6.55 cents per share representing a payout ratio of 20% of Underlying NPAT.

We continue to offer a dividend reinvestment plan that enables eligible shareholders to reinvest their dividends to acquire additional WiseTech shares. Our ongoing policy is to target a dividend payout ratio of up to 20% of NPAT.

Board activities

Turning now to developments with your Board which continues to evolve in order to best support WiseTech's needs.

We are aligning the Board composition to support the needs of our growing business.

We have processes in place for Board renewal and succession planning to ensure that the Board's skill mix reflects the evolving needs of WiseTech and that renewal is undertaken in a seamless manner to ensure corporate history and knowledge is retained.

I said in my address last year that we were working on recruiting new directors as part of our ongoing process of Board renewal, and I am pleased to report that we recently announced the appointment of two new non-executive directors – Michael Malone and Richard Dammary – effective from 1 December 2021.

On behalf of the Board, I am delighted to welcome Richard and Michael to the WiseTech Global group. Both Richard and Michael will be valuable additions to our Board, bringing significant ASX experience, a wealth of corporate know-how, and solid understanding of the technology landscape in Australia.

Michael is an Australian based entrepreneur and founder of iiNet with more than 20 years experience across the technology, telecommunications and media industries. He is also a non-executive director of ASX listed Seven West Media Limited and NBN Co.

Richard is a non-executive director at Australia Post, Aussie Broadband Ltd and Doctor Care Anywhere Group plc and was previously a senior executive and lawyer for over 30 years, including the position of Chief Legal Officer and Company Secretary of Woolworths Group.

Environment, social and governance (ESG) – Our people, communities, the environment and marketplace

In addition to Board renewal and succession planning, we are committed to making a positive contribution to the communities that we are part of and recognise that our social licence to operate is integral to our ability to create long-term value for our stakeholders.

The Board places significant importance on corporate social responsibility, culture, governance and accountability.

WiseTech's technology solutions have an important role to play in solving the complex pain points of the logistics industry and in enhancing productivity and efficiencies for logistics providers. We have an outstanding team of over 1,800 people globally, spanning more than 60 nationalities and ranging in age from 18 to 74.

We are proud of our highly diverse and inclusive workforce. Approximately 31% of our employees and 43% of our Board members are female and we remain committed to encouraging and supporting more women to enter the technology and logistics industries.

During FY21, we worked on consolidating our ESG data and establishing a sustainability framework that is broadly guided by and references The Global Reporting Initiative (GRI) Sustainability Reporting Standards – an internationally recognised sustainability reporting framework. We will continue to evolve and enhance our ESG disclosures over time.

Acknowledgments

Before I hand over to Richard, I would like to take the opportunity to thank each and every one of our employees for their outstanding contributions throughout the year. As I mentioned earlier, we have delivered a very strong FY21 performance and the business is well positioned for future growth. Our team has been instrumental in achieving this and I would like to thank them for their outstanding efforts through the year.

I would also like to acknowledge our CEO and Founder, Richard White, for his inspiring leadership and vision.

I extend my thanks to all Directors for their continued commitment and insights from decades of experience which is particularly valuable as WiseTech continues to grow.

Finally, I would like to thank you – our shareholders – for your continued support and investment in WiseTech.

I will now hand over to Richard.

CEO's address

Thank you, Andrew, and good morning everyone.

I am pleased to report that WiseTech delivered another strong financial performance in the 2021 financial year both in terms of strategic progress and financial returns.

Integral to our performance are our people. They embody our culture of innovation and our strong performance is a credit to their hard work and commitment, making me incredibly proud to be part of the WiseTech family.

Strong financial performance

As Andrew mentioned our Total Revenue for the year was \$507.5 million, up 18%, equating to 24% growth ex FX, on the prior year.

Of note was our strong CargoWise revenue growth, which at \$331.6 million was up 26% on FY20, equating to 31% growth ex FX. Strategically, this growth is significant. First and foremost, it is indicative of the growing revenue contribution that our large global freight forwarder rollouts deliver – which will accelerate over time as rollouts progress and as we secure new global customers.

Secondly, it is indicative of the fact that as we have expanded the CargoWise ecosystem, adding new capabilities, modules and geographies, our existing customers have increased their usage and we have secured new customer wins.

Our top line revenue growth, coupled with our organisation-wide efficiencies and our extraction of acquisition synergies, has enabled us to achieve a marked step change in operating leverage which is evident in our strong EBITDA performance. Our FY21 EBITDA was \$206.7 million, representing growth of 63% on FY20, and underlying NPAT of \$105.8 million was up 101% on the prior year.

Structural changes accelerated by COVID-19

Our performance in FY21 should be looked at in the context of the broader market conditions we are operating in. It is fair to say that never have logistics and global supply chains been more critical and visible in ensuring the movement of goods around the world.

We are seeing constrained capacity and congestion resulting in logistics providers accelerating their replacement of in-house legacy systems, with integrated global software that delivers efficiencies, productivity enhancement, transparency, risk mitigation and facilitates planning of their global operations, exactly what CargoWise delivers.

These market conditions are also driving increased consolidation within the sector, which

you can see with the recently announced acquisitions of JF Hillebrand by DHL and Greencarrier by JAS, as well as DSV's public announced interest in acquiring DB Schenker.

Typically, consolidation is driven by the larger global logistics providers, and we benefit to the extent that our customers are the acquirer or our platform is in place in the acquired business and adopted by the acquirer.

The market buzz around other potential acquisitions, shows an acceleration in appetite, size and speed for consolidation among the top 200 global logistics providers, that we regard as our target customers, which is good as an entrée into an update on our strategic deliverables.

Strategic focus on the 3P's: Product, Penetration and Profitability

Our strategy is designed to leverage these structural industry changes and deliver our vision of being the operating system for global logistics by focusing on the *3Ps: Product, Penetration and Profitability*.

This entails building our capabilities and, where appropriate, fast-tracking our technology development and know-how through acquisitions.

Having completed 39 acquisitions since our IPO in 2016, we have assembled significant resources and development capabilities to fuel the CargoWise technology pipeline.

While we remain open to significant strategic acquisition opportunities, we have slowed our near-term acquisition activity in order to focus on expanding the CargoWise ecosystem and on extracting synergies from the acquisitions to maximise operating leverage and drive scalability.

1. Product

Product development and innovation continued to be a priority in FY21. We invested \$167.1 million in R&D equating to 33% of Total Revenue and made significant progress in continuing to align our acquisition development teams to support our development priorities.

In addition, we established another centre of excellence in Bangalore and recommenced recruitment of technology and industry talent, following a short slowdown in 2H20 at the outset of COVID-19, leveraging our broad geographic footprint to recruit from the global talent pool.

Our top development priority in FY21 was to accelerate native customs and cross border compliance builds in key markets. As of the 30 June 2021, the CargoWise native customs functionality was in *Production Release* across jurisdictions accounting for approximately 45% of manufactured trade flows (up from approximately 35% in FY20).

We also completed the product integration of global rates functionalities (secured via the CargoSphere and Cargoguide acquisitions) onto the CargoWise platform. This integrated functionality is currently in production with several major customers and work has commenced on the native rewrite onto the CargoWise platform.

Additionally, 1,096 CargoWise new product features and enhancements were delivered throughout the year and solid progress was made in extending CargoWise enterprise-wide functionalities (such as automation and tracking) from the adjacency businesses, with customer integrations well advanced.

Also, of strategic note in FY21, was the deployment of the beta version of CargoWise Neo (Neo) to a select group of beneficial cargo owners (BCOs) via existing WiseTech customers and the commencement of work on extending aspects of Neo for customer specific needs. Neo is a longer-term development priority that will deliver a web-based, integrated platform enabling BCOs to link directly with their logistics providers to plan, price, book, track, trace and manage their freight.

2. Penetration

With the market penetration of fully digital and highly automated global logistics solutions still in the early stages, the opportunity for growth is vast.

Our market penetration approach is to target the Top 25 Global Freight Forwarders and the top 200 global logistics providers. This enables us to benefit from global rollouts and consolidation within the logistics sector as large customers acquire other industry players and add them to their rollout on the CargoWise platform.

In FY21, we secured six new global rollouts and signed FedEx post 30 June 2021. These new global rollouts are in addition to the 30 existing rollouts that WiseTech already has in place.

Ten of the Top 25 Global Freight Forwarders have rollouts on the CargoWise platform either *In Production* or are *Contracted and in Progress*. Given these large customers can take multiple years to roll out CargoWise across their sites globally, usage and transaction revenues are expected to continue to grow over time.

3. Profitability

In FY21 we commenced work on an organisation-wide efficiency and acquisition synergy extraction program designed to streamline our processes and teams, maximising operating leverage and ensure appropriate allocation of resources to support scalability and delivery of our strategic vision.

This program delivered a \$13.8 million net benefit in FY21 (after recognising \$8.2 million of restructuring costs), exceeding our previously announced \$10 million target.

These cost reductions have partially offset our increased investment in product development and recruitment of technology specialists to support ongoing growth.

We are on track to achieve a cost reduction run rate of ~\$40 million for FY22 exceeding our previous \$20–30 million target.

Outlook

Looking ahead, supply chain disruption, capacity constraints and the outbreaks of new COVID-19 strains in key markets are likely to continue to impact global trade until there is a widespread rollout of vaccines.

As noted in August at the time of our FY21 Results, subject to the assumptions set out in the WiseTech FY21 Results presentation, we anticipate FY22 revenue growth of 18% to 25% (representing revenue of \$600 million to \$635 million) and EBITDA growth of 26% to 38% (representing \$260 million to \$285 million).

We are ideally positioned for continued growth and further market penetration. We have a well-considered, comprehensive plan to deliver on our strategic objectives, and our strong balance sheet, strong cash flows and robust liquidity mean we have significant financial firepower to fund our growth.

Acknowledgments

On behalf of the WiseTech Global team, I thank each of our shareholders for your investment and support.

We have an exciting future with many growth opportunities ahead of us. There has never been a greater need for the globally integrated logistics technology that CargoWise provides.

Our vision inspires our people and we remain focused on R&D that delivers breakthrough products that enable and empower those that own and operate the supply chains of the world.

I will now hand back to Andrew for the formal business of the meeting.

Annual General Meeting 2021

19 November 2021

Virtual meeting platform



Virtual meeting online guide

[wisetechglobal.com/investors/annual-general-meetings/](https://www.wisetechglobal.com/investors/annual-general-meetings/)



Access virtual meeting

agmlive.link/WTC21



How to vote

Click '**Get a Voting Card**' button



How to ask a question

Click '**Ask a Question**' button

wisetech
global

Virtual Meeting
Online Guide

Before you begin

Ensure your browser is compatible.
Check your current browser by going to
the website: [whatsmybrowser.com](https://www.whatsmybrowser.com)

Supported browsers are:

- Chrome - Version 44 & 45 and after
- Firefox - 40.0.2 and after
- Safari - OS X v10.0 & iOS v10.0 and after
- Internet Explorer 9 and up
- Microsoft Edge - 102.0 and after

To attend and vote you must have your
securityholder number and password.

Voting Card

Please complete your identity selecting the most voting instruction (for
Agree or Disagree) for each resolution. If you wish to complete a card (i.e.
show support) for more than one resolution, please select the 'Agree' or
'Disagree' button for each resolution. Please follow the instructions on the
screen. The card will be used to determine the outcome of the meeting.

Full Vote Partial Vote

Resolution 28

Resolution 29

Resolution 30

Resolution 31

Resolution 32

Resolution 33

Resolution 34

Resolution 35

Resolution 36

Resolution 37

Resolution 38

Resolution 39

Resolution 40

Resolution 41

Resolution 42

Resolution 43

Resolution 44

Resolution 45

Resolution 46

Resolution 47

Resolution 48

Resolution 49

Resolution 50

Resolution 51

Resolution 52

Resolution 53

Resolution 54

Resolution 55

Resolution 56

Resolution 57

Resolution 58

Resolution 59

Resolution 60

Resolution 61

Resolution 62

Resolution 63

Resolution 64

Resolution 65

Resolution 66

Resolution 67

Resolution 68

Resolution 69

Resolution 70

Resolution 71

Resolution 72

Resolution 73

Resolution 74

Resolution 75

Resolution 76

Resolution 77

Resolution 78

Resolution 79

Resolution 80

Resolution 81

Resolution 82

Resolution 83

Resolution 84

Resolution 85

Resolution 86

Resolution 87

Resolution 88

Resolution 89

Resolution 90

Resolution 91

Resolution 92

Resolution 93

Resolution 94

Resolution 95

Resolution 96

Resolution 97

Resolution 98

Resolution 99

Resolution 100

Help number:
+61 1800 990 363

How to ask written questions through the online platform

1. Click '**Ask a Question**' button either at the top or bottom of the webpage
2. Complete the two sections in the '**Ask a Question**' box
3. Click '**Submit Question**'. You can view your questions in 'View Questions' section
4. Click '**Submit Another Question**' in 'View Questions' box if you would like to ask another question

The screenshot displays the Wisetech Global 2021 Annual General Meeting (AGM) online platform. At the top, the header includes the Wisetech Global logo, a help number (1800 990 363), and navigation buttons for 'Ask a Question', 'Get a Voting Card', and 'Exit Meeting'. The main content area features a video player on the left and a large banner on the right for the '2021 Annual General Meeting'. Below the banner, there are buttons for 'Get a Voting Card' and 'Ask a Question', along with a 'Downloads' section containing links to 'Speakers Bio', 'Sustainability Report', 'Notice of meeting', and 'Online Guide'. The bottom section is divided into two panels: 'Ask a Question' and 'View Questions'. The 'Ask a Question' panel includes a dropdown menu for 'Regarding' (set to 'General Business'), a text area for the question, and a 'Submit Question' button. The 'View Questions' panel shows a list of submitted questions, including one about the next AGM, and a 'SUBMIT ANOTHER QUESTION' button.

How to ask questions by phone

1. Join the AGM by land line or mobile device
2. Enter your unique PIN. Please contact Link Market Services if you would like to request a PIN
3. When the Chair calls for questions on each resolution, **press *1** on your keypad if you wish to notify the operator you have a question
4. When it is your time to ask your question, the moderator will introduce you to the meeting, please unmute your phone and ask your question

Join AGM by phone

Australia Toll Free:

1800 416 518

International:

+61 2 9189 8864

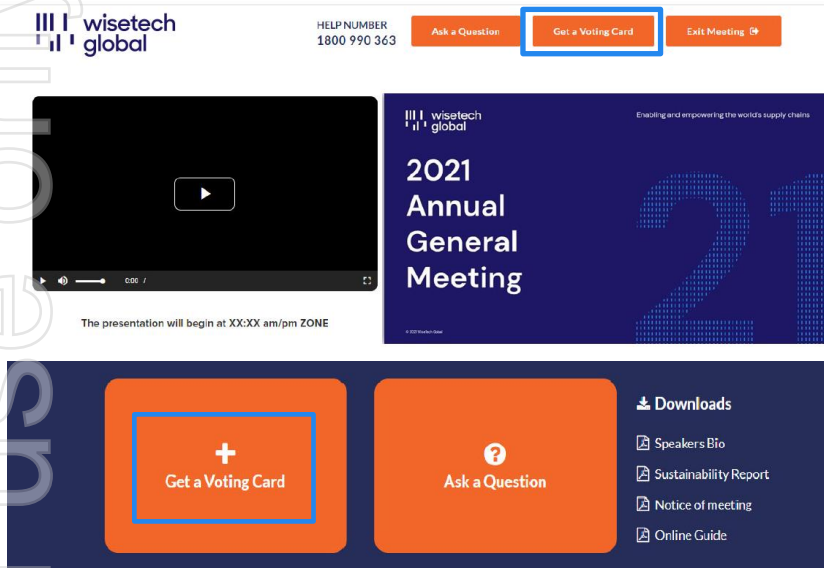
Request PIN:

Link Market Services help number

+61 1800 990 363

How to vote on items of business by poll

1. Click the '**Get a Voting Card**' button either at the top or bottom of the webpage



2. Enter your Shareholder Number (SRN/HIN) or Proxy Number and click '**Submit Details and Vote**'

A screenshot of the 'Voting Card' form. The form has a title 'Voting Card' and a subtitle 'Please provide your Shareholder or Proxy details'. It is divided into two sections: 'SHAREHOLDER DETAILS' and 'PROXY DETAILS'. The 'SHAREHOLDER DETAILS' section has two input fields: 'Shareholder Number' and 'Post Code'. Below these fields is an orange button labeled 'SUBMIT DETAILS AND VOTE' (highlighted with a blue border). The 'PROXY DETAILS' section has one input field: 'Proxy Number'. Below this field is another orange button labeled 'SUBMIT DETAILS AND VOTE' (highlighted with a blue border). An 'OR' button is located between the two sections.

How to vote on items of business by poll

3. Select either '**Full Vote**' or '**Partial Vote**'
4. Place your vote by clicking '**For**', '**Against**' or '**Abstain**' voting buttons
5. If you would like to submit a partial vote, ensure you enter the number of votes for any or all resolutions
6. Click '**Submit Vote**' or '**Submit Partial Vote**' button to complete your vote

- You may cast your live vote at any time during the AGM
- You must log on to the online platform to cast the live vote. You cannot cast a vote over the phone
- Live voting will close approximately five minutes after the close of the AGM

The screenshot shows a web interface for a company's Annual General Meeting (AGM). At the top, it says 'ABC COMPANY PTY LTD' and 'X123456789'. Below this is a 'Voting Card' section with instructions: 'Please complete your vote by selecting the required voting instruction (For, Against or Abstain) for each resolution. If you would like to complete a partial vote, please specify the number of votes for each resolution in the Partial Vote section. Proxy holder votes will only be applied to discretionary (undirected) votes. Directed votes will be applied as per the the Unitholder's voting instructions.' There are two tabs: 'Full Vote' and 'Partial Vote'. Below the tabs are four resolutions, each with 'For', 'Against', and 'Abstain' buttons. Resolution 2B is 'RE-ELECTION OF MR. ABC AS A DIRECTOR'. Resolution 2C is 'RE-ELECTION OF MS XYZ AS A DIRECTOR'. Resolution 3 is 'INCREASE TO DIRECTORS' MAXIMUM FEE POOL LIMIT'. Resolution 4 is 'ADOPTION OF REMUNERATION REPORT'. At the bottom, there is a large orange 'SUBMIT VOTE' button.

ABC COMPANY PTY LTD X123456789

Voting Card

Please complete your vote by selecting the required voting instruction (For, Against or Abstain) for each resolution. If you would like to complete a partial vote, please specify the number of votes for each resolution in the Partial Vote section. Proxy holder votes will only be applied to discretionary (undirected) votes. Directed votes will be applied as per the the Unitholder's voting instructions.

Full Vote Partial Vote

Resolution 2B ☒ For ☐ Against ☐ Abstain

RE-ELECTION OF MR. ABC AS A DIRECTOR

Resolution 2C ☒ For ☐ Against ☐ Abstain

RE-ELECTION OF MS XYZ AS A DIRECTOR

Resolution 3 ☒ For ☐ Against ☐ Abstain

INCREASE TO DIRECTORS' MAXIMUM FEE POOL LIMIT

Resolution 4 ☒ For ☐ Against ☐ Abstain

ADOPTION OF REMUNERATION REPORT

SUBMIT VOTE

WiseTech Global Limited Board



Andrew Harrison
Independent Chair and
Non-Executive Director



Richard White
Executive Director, Founder
and CEO



Teresa Engelhard
Independent
Non-Executive Director



Charles Gibbon
Independent
Non-Executive Director



Michael Gregg
Independent
Non-Executive Director



Maree Isaacs
Executive Director,
Co-founder and Head
of Licence Management



Arlene Tansey
Independent
Non-Executive Director

Agenda

1

Welcome &
Chair's Address

2

CEO's Address

3

Formal Business

4

Poll

Chair's Address

ANDREW HARRISON



Global supply chain market conditions

Constrained capacity resulting in increasing freight rates, accelerating digitisation & consolidation



Global trade

- 'Goods-led' recovery in global trade has continued in 2021
- Consumer demand buoyed by various country-specific COVID-19 fiscal stimulus support packages¹
- This has boosted demand for manufacturing and global trade



Freight

- Air freight impacted by passenger flight restrictions leading to limited availability of belly freight
- Sea freight affected by geographically unbalanced demand leading to vessel and container shortages, as well as port access challenges
- Freight disruptions resulting in:
 - constrained capacity
 - supply chain bottle-necks and disruption
 - increased freight rates



Structural changes

- Whilst short term freight rate increases do not translate into immediately increased WiseTech revenue, they do lead to acceleration of:
 - replacement of customers' legacy systems
 - demand for integrated global software solutions with increased visibility
 - CargoWise customers driving growth and industry consolidation via M&A

FY21 financial highlights

Robust financial performance, strong revenue growth & cash generation reflecting operating leverage

Total revenue \$507.5m

↑ **24% ex FX** (↑ 18% incl. FX)
on FY20

Total revenue growth **\$78.1m**

Recurring revenue **90%** (↑ 1pp)

CargoWise revenue \$331.6m

↑ **31% ex FX** (↑ 26% incl. FX)
on FY20

CargoWise revenue growth **\$68.6m**

Acquisition revenue¹ **\$175.9m**
(↑ 12% ex FX, ↑ 6% incl. FX)

EBITDA \$206.7m

↑ **63%**
on FY20

EBITDA growth **\$80.0m**

EBITDA margin **41%** (↑ **11pp**)

CargoWise EBITDA margin **55%**

Underlying NPAT¹ \$105.8m

↑ **101%**
on FY20

Statutory NPAT **\$108.1m** (↓ 33%)²

Underlying EPS **32.6cps** (↑ 99%)

Free cash flow \$139.2m

↑ **149%**
on FY20

Free cash flow conversion rate **67%** (↑ 23pp)

Cash at 30 June 2021 of **\$315.0m**

Undrawn debt facility of **\$225m**
(refinanced July 2021)³

Final dividend 3.85cps

↑ **141%**
on FY20

Fully franked

Payout ratio **20%** of Underlying NPAT

Board renewal

Aligning Board composition to support our technology leadership, global reach and footprint

Appointment of 2 Independent Non-Executive Directors, effective 1 December 2021



Richard Dammery

- Non-executive director Australia Post, Aussie Broadband (ASX: ABB) & others
- Previous Chief Legal Officer and Company Secretary Woolworths Group
- Extensive ASX governance experience

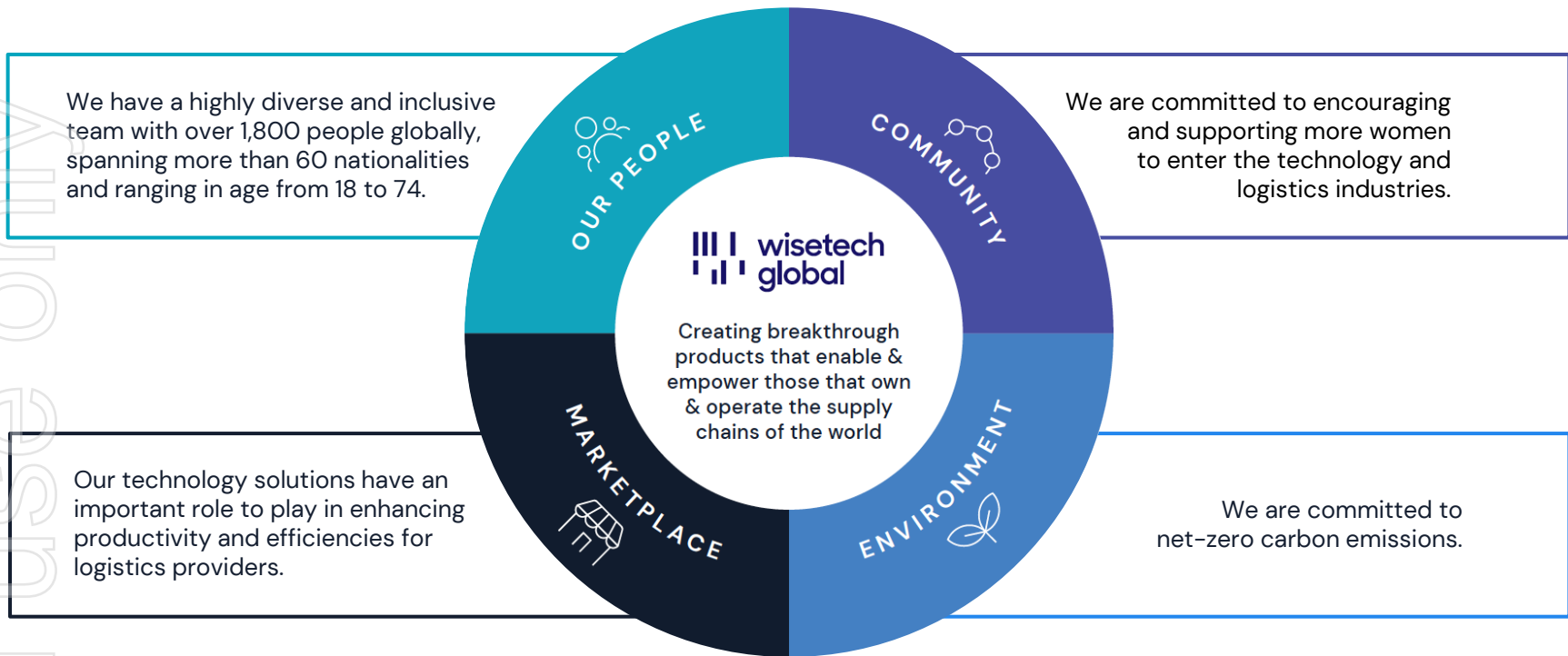


Michael Malone

- Founder of iiNet
- Non-executive director Seven West Media Limited (ASX: SWM)
- +20 years experience across technology, telecommunications and media industries

Sustainability pillars

Committed to making a positive contribution to our people, communities and customers



CEO's
Address

RICHARD WHITE



Strong financial performance

CargoWise revenue growth signifying market penetration momentum and ecosystem expansion

Top-line growth and efficiency program enabled a marked step change in operating leverage

Acceleration of revenue contribution by large global freight forwarder rollouts

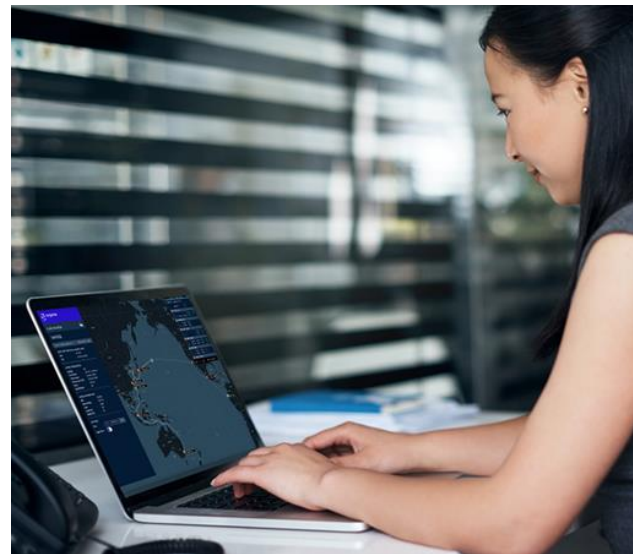
Total FY21 Revenue
\$507.5m
↑ **18%** on FY20

Expansion of CargoWise ecosystem

CargoWise FY21 revenue
\$331.6m
↑ **26%** on FY20

Organisation-wide efficiency and acquisition synergy extraction program

FY21 EBITDA
\$206.7m
↑ **63%** on FY20



WiseTech's strategy designed to leverage structural changes

Our people facilitate the acceleration of our long-term strategy

To be the operating system for global logistics

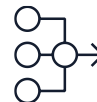
Our strategy is designed to accelerate growth by **leveraging structural changes**



Need to replace ageing legacy systems



Demand for integrated global software solutions with increased visibility



Logistics providers pursuing industry consolidation

Our people are focused on the 3Ps to **deliver on our vision** →

Product

Extend technology lead

Penetration

Expand market penetration

Profitability

Drive operational efficiency

FY21 strategic highlights

Strategic progress on the 3Ps to leverage structural changes and deliver on our vision



Product

- Significant progress in continued alignment of acquired product & development teams to support WiseTech's development priorities
- Geographic expansion of native customs functionality, covering ~45% of global manufactured trade flows¹
- Product integration of global rates functionalities onto CargoWise – in production with a number of major customers and native rewrite commenced
- Addition of sea freight to eCommerce capabilities – operational in AU, NZ and US
- 1,096 new CargoWise product and feature enhancements
- Deployed beta version of CargoWise Neo



Penetration

- Strategic focus on the Top 25 Global Freight Forwarders² & top 200 global logistics providers
- 6 new global rollouts of CargoWise by Large Global Freight Forwarders³ secured in FY21, bringing total large global customer rollouts to 36 (including DHL, Bolloré, DSV/Panalpina)
- Post-FY21 additional signing of new global rollout with FedEx
- 10 of Top 25 Global Freight Forwarders have either rolled out or are in progress with global rollouts on the CargoWise platform



Profitability

- Strong revenue growth drives operating leverage and margin expansion
- Implementation of organisation-wide efficiency and acquisition synergy program to:
 - streamline processes and teams
 - ensure resources appropriately allocated to support scalability, growth and delivery of WiseTech's vision
- Program delivered:
 - \$22.0m gross FY21 cost reductions (\$8.2m restructuring costs)
 - \$13.8m net benefit, exceeded \$10m target
 - ~\$40m net cost reduction run rate for FY22, exceeding previous \$20m-\$30m target

1. Global manufactured trade flows refers to import and export related manufactured commodities.

2. Top 25 based on Armstrong & Associates, Inc. Top 25 Global Freight Forwarders List ranked by 2020 logistics gross revenue/turnover and freight forwarding volumes (revenues are company reported or Armstrong & Associates estimates). Updated 10 August 2021.

3. A CargoWise customer contracted to grow or who has grown either organically or contractually to 10 or more countries and 400 or more registered users on CargoWise.

FY22 guidance

Strong growth outlook

FY22 revenue

\$600m – \$635m

18% – 25%

FY22 growth vs FY21

FY22 EBITDA

\$260m – \$285m

26% – 38%

FY22 growth vs FY21

FY22 EBITDA %

43% – 45%

2pp – 4pp

FY22 vs FY21

FY22 guidance assumptions

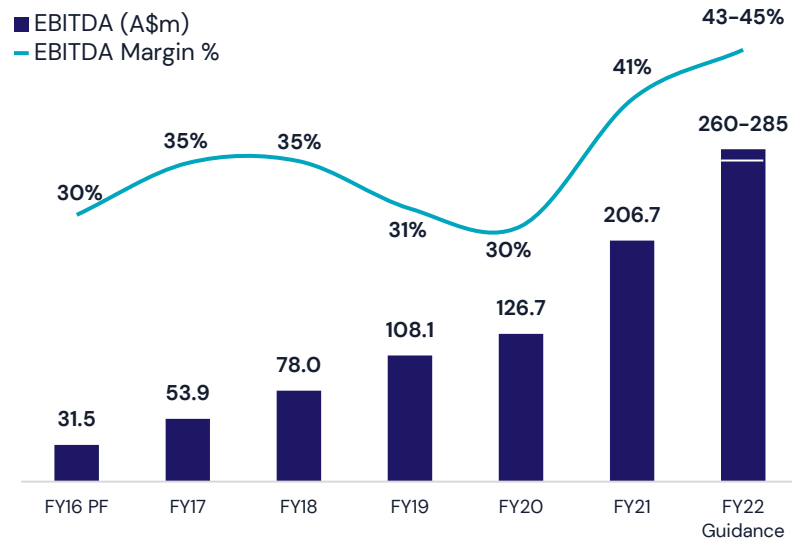
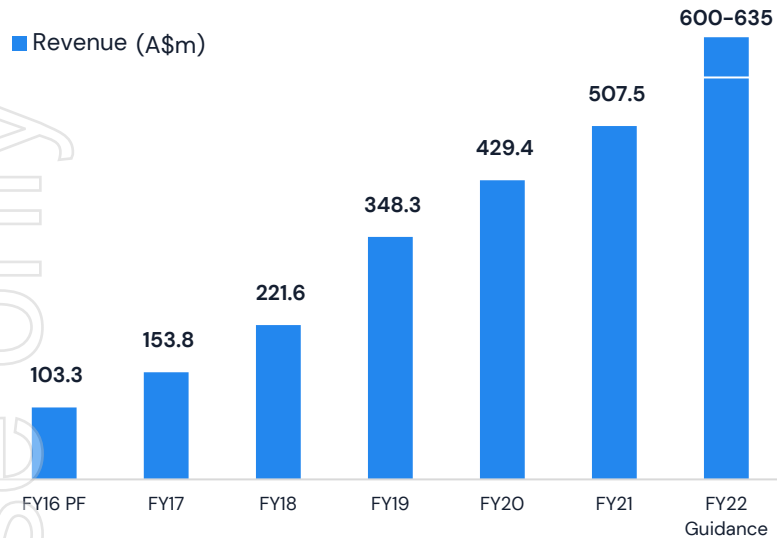
- ① **CargoWise: revenue growth of ~30% – 40%** (excluding FX)
 - Strong momentum from FY21 run rate
 - FY22 first and second half splits broadly similar to FY21
 - FX headwind reduces growth by ~3pp
- ② **Acquisitions:**
 - No new acquisitions not already closed
 - Flat revenue growth
- ③ **FX: headwind \$10m revenue and \$7m EBITDA**
 - Additional FX variability, partially offset by hedging
 - See FY21 Investor Presentation Appendix for sensitivity analysis
- ④ **Operating Expenses:**
 - ~\$40m cost reduction run rate for FY22, \$13.8m net benefit achieved in FY21, results in ~\$26m net cost reductions in FY22 vs. FY21
 - ~\$70m – \$80m additional cost investments to support long-term growth, staff retention and post COVID-19 activities

Guidance provided in line with these assumptions and those in the FY21 Investor Presentation Appendix, slide 29.

Uncertainty around future economic and industrial production growth and pandemic stimulus measures may lead to alternative outcomes.

Prevailing uncertainties relating to sovereign and geopolitical risk may also reduce assumed growth rate.

Strategic approach delivering long-term sustainable shareholder value



✓ Delivering strong revenue growth

✓ Gaining momentum in market penetration

✓ Expanding CargoWise ecosystem

✓ Increasing operating leverage

✓ Growing EPS
FY16 PF: 5.4cps to FY21: 33.3cps

Formal Business



www.wisetechglobal.com/investors

