

**ASX ANNOUNCEMENT**

5 August 2022  
ASX Code: MYL

**BOARD OF DIRECTORS**

Mr Jeff Moore  
Non-Executive Chairman

Mr John Lamb  
Managing Director

Mr Rowan Caren  
Executive Director

Mr Paul Arndt  
Non-Executive Director

Mr Steve Hendel  
Non-Executive Director

**ISSUED CAPITAL**

Shares	302 m.
Performance Rights	5 m.
Unlisted Options	1 m.

**Mallee Resources Limited**

Suite 1, Ground Floor,  
9 Havelock Street  
West Perth 6005  
Western Australia

info@malleeresources.com.au  
P +61 (0)8 6147 8100  
malleeresources.com.au

ABN: 48 124 943 728

# INVESTOR WEBINAR PRESENTATION

Mallee Resources Limited ("MYL" or the "Company") is pleased to announce its participation in the ShareCafe "Hidden Gems" Webinar, to be held Friday 5<sup>th</sup> of August 2022 from 12:30pm AEST / 10:30am AWST.

Managing Director John Lamb will provide an overview of the Company which has recently acquired the Avebury nickel sulphide project in western Tasmania. Mallee has also issued a prospectus to raise up to A\$70 million via the issue of ordinary shares at an issue price of \$0.70 per share, with primary purpose of the capital raising to provide the funding required to bring the Avebury project back into production in the short term.

This webinar can be viewed live via Zoom. By pasting the link to follow in a website browser listeners can register for the event.

[bit.ly/3Soz506](https://bit.ly/3Soz506)

A copy of the investor presentation to be delivered during the webinar is attached.

Authorised for release to the ASX by:



**John Lamb**  
Managing Director

**About Mallee Resources Limited**

Mallee Resources Limited (ASX: MYL) is an emerging miner listed on the Australian Securities Exchange. The Company wholly owns the Avebury Nickel Sulphide Project in Zeehan, western Tasmania. The Avebury Project hosts JORC (2012) compliant Mineral Resources of 29.3 Mt at 0.9% Ni<sup>1</sup>, an underground mine and a modern processing plant and mine infrastructure. The Avebury Mineral Resource is open at depth and along strike and the prospective host geology hosts outstanding exploration potential.

<sup>1</sup> The Mineral Resource estimate including JORC Table 1, sections 1, 2 and 3 and the competent persons statement has been previously reported by the Company in accordance with the 2012 Edition of the 'Australasian Code for Reporting of Exploration results, Mineral Resources and Ore Reserves' (JORC Code) on 8 April 2022 and is publicly available at <https://bit.ly/3jifzIM>. The Company confirms that it is not aware of any new information or data that materially affects the information included in the relevant market announcement and that all material assumptions and technical parameters underpinning the estimates continue to apply and have not materially changed.





**MALLEE  
RESOURCES  
LIMITED**

# CRITICAL MINERALS FOR A SUSTAINABLE FUTURE

PRESENTATION TO SHARECAFE – HIDDEN GEMS WEBINAR

AUGUST 2022



# Disclaimer

## DISCLAIMER

These presentation materials and the accompanying verbal presentation (together, the Presentation Materials) have been prepared by Mallee Resources Limited (Company or MYL) as at 1/7/2022 and statements are current only as at that date. Information in the Presentation Materials remains subject to change without notice. The Company has no responsibility or obligation to inform you of any matter arising or coming to its notice, after the date of this document, which may affect any matter referred to in this document. By receiving the Presentation Materials, you acknowledge and represent to the Company that you have read, understood and accepted the terms of this disclaimer. It is the responsibility of all recipients of these Presentation Materials to obtain all necessary approvals to receive these Presentation Materials and receipt of the Presentation Materials will be taken by the Company to constitute a representation and warranty that all relevant approvals have been obtained.

### NOT AN OFFER

These Presentation Materials are for information purposes only. The Presentation Materials do not comprise a prospectus, product disclosure statement or other offering document under Australian law (and will not be lodged with the Australian Securities and Investments Commission) or any other law. The Presentation Materials also do not constitute or form part of any invitation, offer for sale or subscription or any solicitation for any offer to buy or subscribe for any securities nor shall they or any part of them form the basis of or be relied upon in connection therewith or act as any inducement to enter into any contract or commitment with respect to securities. In particular, these Presentation Materials do not constitute an offer to sell or a solicitation to buy, securities in the United States of America.

### NOT INVESTMENT ADVICE

The Presentation Materials are not investment or financial product advice (nor tax, accounting or legal advice) and are not intended to be used for the basis of making an investment decision. Recipients should obtain their own advice before making any investment decision.

### SUMMARY INFORMATION

The Presentation Materials do not purport to be all inclusive or to contain all information about the Company or any of the assets, current or future, of the Company. The Presentation Materials contain summary information about the Company and its activities which is current as at the date of the Presentation Materials. The information in the Presentation Materials is of a general nature and does not purport to contain all the information which a prospective investor may require in evaluating a possible investment in the Company or that would be required in a prospectus or product disclosure statement or other offering document prepared in accordance with the requirements of Australian law or the laws of any other jurisdiction, including the United States of America.

While reasonable care has been taken in relation to the preparation of the Presentation Materials, none of the Company or its directors, officers, employees, contractors, agents, or advisers nor any other person (Limited Party) guarantees or makes any representations or warranties, express or implied, as to or takes responsibility for, the accuracy, reliability, completeness or fairness of the information, opinions, forecasts, reports, estimates and conclusions contained in this document. No Limited Party represents or warrants that this document is complete or that it contains all information about the Company that a prospective investor or purchaser may require in evaluating a possible investment in the Company or acquisition of shares in the Company. To the maximum extent permitted by law, each Limited Party expressly disclaims any and all liability, including, without limitation, any liability arising out of fault or negligence, for any loss arising from the use of or reliance on information contained in this document including representations or warranties or in relation to the accuracy or completeness of the information, statements, opinions, forecasts, reports or other matters, express or implied, contained in, arising out of or derived from, or for omissions from, this document including, without limitation, any financial information, any estimates or projections and any other financial information derived therefrom.

### FORWARD LOOKING STATEMENTS

Certain statements contained in the Presentation Materials, including information as to the future financial or operating performance of the Company and its projects, are forward looking statements. Such. Subject to any continuing obligations under applicable law the Company disclaims any obligation or undertaking to disseminate any updates or revisions to any forward looking statements in this document to reflect any change in expectations in relation to any forward looking statements or any change in events, conditions or circumstances on which any such statement is based.

## REFERENCES TO MINERAL RESOURCES 2022

The Mineral Resource estimate including JORC Table 1, sections 1, 2 and 3 and the competent persons statement has been previously reported by the Company in accordance with the 2012 Edition of the ‘Australasian Code for Reporting of Exploration results, Mineral Resources and Ore Reserves’ (JORC Code) on 8 April 2022 and is publicly available at <https://bit.ly/3jifzIM>. The Company confirms that it is not aware of any new information or data that materially affects the information included in the relevant market announcement and that all material assumptions and technical parameters underpinning the estimates continue to apply and have not materially changed.

## PROSPECTUS

The Company is in the process of preparing a prospectus (Prospectus) for the offer of fully paid ordinary shares in the capital of the Company (Shares) in relation to the capital raising contemplated by the Presentation Materials. A copy of the Prospectus is anticipated to be available by July 2022 and will be available on the Company’s website at <https://malleeresources.com.au/>. All offers of Shares for the capital raising referred to in the Presentation Materials will be made in, or accompanied by, the Prospectus. Investors should consider the Prospectus in deciding whether to acquire Shares and any person who wishes to apply for Shares must complete the application form that will be in or will accompany the Prospectus.



# Australia's next nickel sulphide producer

First concentrate scheduled Q4 CY2022

## Class-1 nickel in tier one location

- Substantial nickel sulphide Mineral Resources of 29.3 Mt at 0.9% Ni (264 Kt contained Ni) comprising: Indicated of 8.7Mt at 1.0% Ni and Inferred 20.7 Mt at 0.8% Ni (JORC 2012)<sup>1</sup>
- Tasmania is an excellent mining jurisdiction

## Short term production potential

- Mining operations have commenced at Avebury
- Underground mine and processing plant are in excellent condition and allow for a short term re-start to production

## Experienced executive and site team

- Track record in base, battery and precious metals
- Demonstrated ability to deal with complexity and challenges
- 30+ year veterans on key site management roles

## Positioned for a low carbon future

- MYL is aligned with the ICMM Mining Principles and has adopted the Global Reporting Initiative framework (GRI)
- Tasmanian grid power is 100% renewable<sup>2</sup>



### Notes:

1. See page 2 on references to Mineral

2. Tasmanian Government ([https://recfit.tas.gov.au/renewables/100\\_target\\_achievement](https://recfit.tas.gov.au/renewables/100_target_achievement))

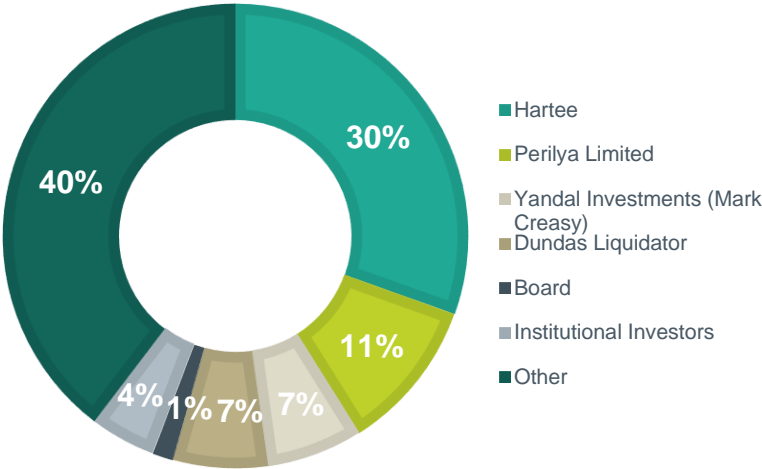


# Corporate snapshot

## Capital Structure<sup>1</sup>

Market capitalisation at 70cps issue price	▪ A\$211.3 m.
Shares on issue	▪ 301.9 m.
Unlisted options	▪ 1.3 m.
Performance rights	▪ 4.6 m.
Cash position <sup>2</sup>	▪ A.\$31.5 m.
Debt position	▪ US\$ 30.0 m. / A\$43.7 m.
Enterprise value / contained nickel tonne in Mineral Resources	▪ A\$ 847/t

## Key Shareholders



## Board



### Jeffrey Moore, Non-Executive Chairman

- B.Sc, MAusIMM, MGSA
- Geologist with extensive technical, managerial and project finance experience
- Former Director and CEO of significant ASX listed mining companies



### John Lamb, Managing Director

- B. Surv(IT), Grad Dip Management, MBA, FAusIMM(CP), GAICD
- Over 30 years experience across mining, construction, forestry and logistics sectors
- Former General Manager of the Avebury Mine and Rosebery Mines in Tasmania.
- Former General Manager of the Century Zinc Mine in Queensland



### Rowan Caren, Executive Director, CFO & Company Secretary

- B. Com, CA
- Over 30 years experience in natural resources sector providing financial and corporate services
- Extensive Director and company secretarial experience



### Paul Arndt, Non-Executive Director

- B. Sc, MBA, MSc, Grad Dip Engineering
- Former Managing Director and Chief Executive Officer of Perilya
- Formerly held senior positions with Newcrest, Pasminco and MIM



### Steve Hendel, Non-Executive Director

- B.A, J.D
- Founding Partner and Managing Director of Hartree
- Chairman of Sprague Resources LP. Former Partner at Goldman Sachs

1. Undiluted market capitalisation calculated as the shares on issue multiplied by the issue price for the purposes of the proposed capital raising. Shares on issue do not include Additional Acquisition Shares (13.1 M.) which will be issued subject to MYL's reinstatement to trading on the ASX and other conditions precedent. Shares on issue also exclude shares to be issued under the Prospectus. The cash and debt positions are as at 5 July 2022. Enterprise value is calculated as MYL's undiluted market capitalisation plus debt less cash. Contained nickel in the Avebury Mineral Resources Estimate is 264,000t (see slide 24)

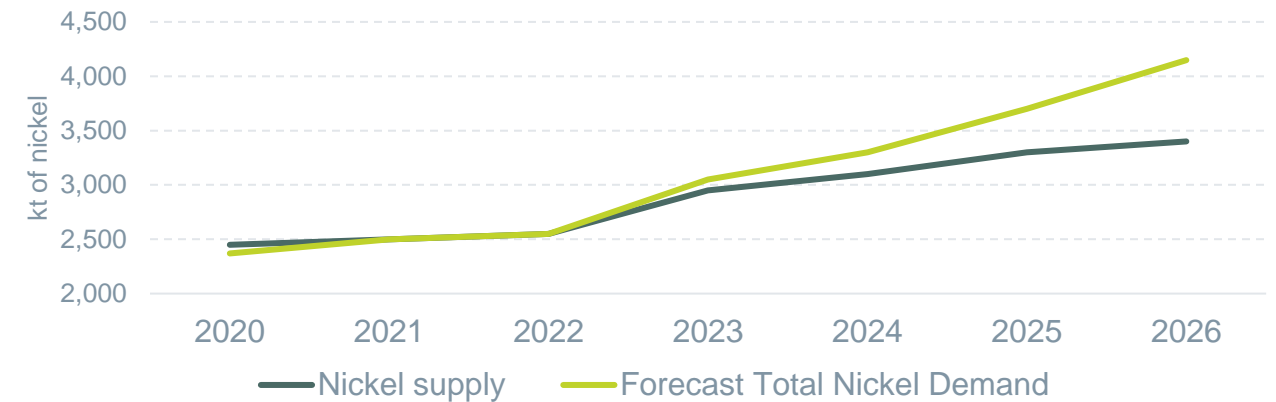
2. Includes USD 12.06 M. / AUD 17.6 M. held in MYL's Myanmar bank accounts. See announcement date 7 April. The processing of foreign currency transfers from Myanmar has been suspended while local financial institutions understand and implement recent policy changes by the Myanmar authorities. It is likely that further delays will result from this uncertainty within the foreign exchange environment in Myanmar. FX rate used AUD:USD 0.68652022.



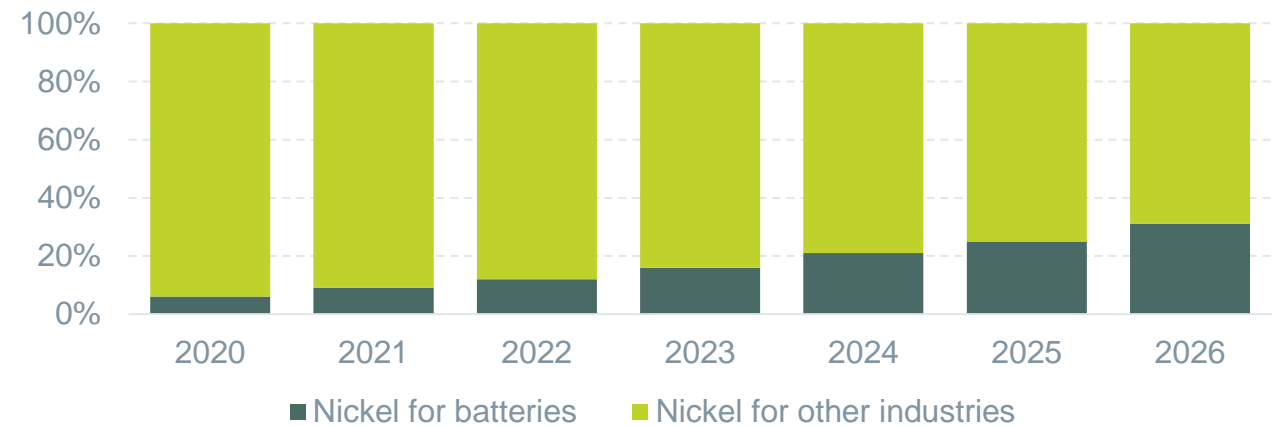
# Battery-grade nickel sulphide leveraging Tasmania's green energy

- **Favourable nickel pricing environment.** Spot LME nickel prices and futures contracts are supportive
- **Robust demand outlook.** Demand for nickel in battery technologies provides a robust outlook:
  - ~20 million passenger EV sales in 2025 is expected to grow to over 70 million by 2040<sup>1</sup>
  - High nickel content batteries are the key to longer range, more efficient EV's
  - Downstream users are seeking responsibly sourced Class-1 nickel
- **Limited Global Supplies.** Nickel sulphide concentrates from low-emission, ESG conscious providers in tier one jurisdictions are in short supply, exacerbated by the Ukraine war
- **Short path to re-start.** The care and maintenance program has kept the mine and processing plant in good condition allowing for a start to mining operations. Processing operations will commence once sufficient ore stockpiles are available on the ROM pad

*Global Nickel Supply Capacity & Demand <sup>2</sup>*



*Forecast Global Use For Nickel By End-Use Industry <sup>2</sup>*



**Notes:**

1. Wood Mackenzie
2. Rystad Energy Battery Metals Cube, Rystad Energy research and analytics



# An enviable ESG proposition



MINING WITH  
**PRINCIPLES**

## Environmental

- **Renewable grid power.** A rare opportunity to decarbonise a mining operation
- **Small disturbance footprint.** Key mine infrastructure is established and permitted
- Tailings storage facility permitted. Future tailings to be backfilled into underground mine
- Mine has a waste rock deficit. No surface waste landforms will be created
- **Improving water quality.** Positive site water balance. Averbury wetlands enhancing water quality
- Conservation plans in place to protect local fauna

## Social

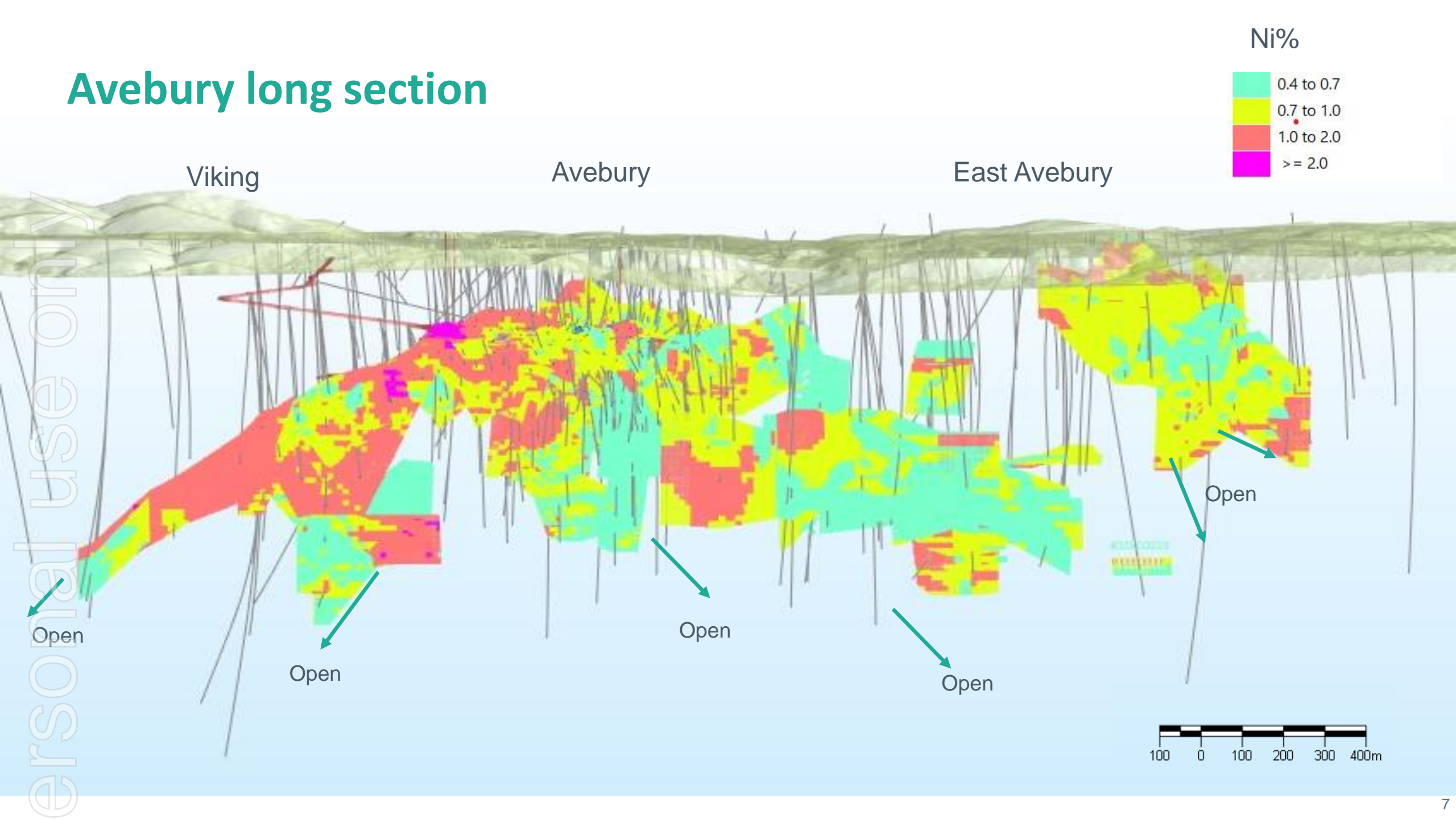
- Safety conscious culture with implementation of workplace management procedures
- **Local workforce.** New jobs start with locals
- Support for local community initiatives – grants program already underway with donations already at work in the community
- No native title disputes
- Strong Tasmanian Government support

## Governance

- Aligned with International Council on Mining & Metals (ICMM) Mining Principles
- Global Reporting Initiative (GRI) reporting framework
- ASX Corporate Governance Principles and Recommendations



# Avebury long section



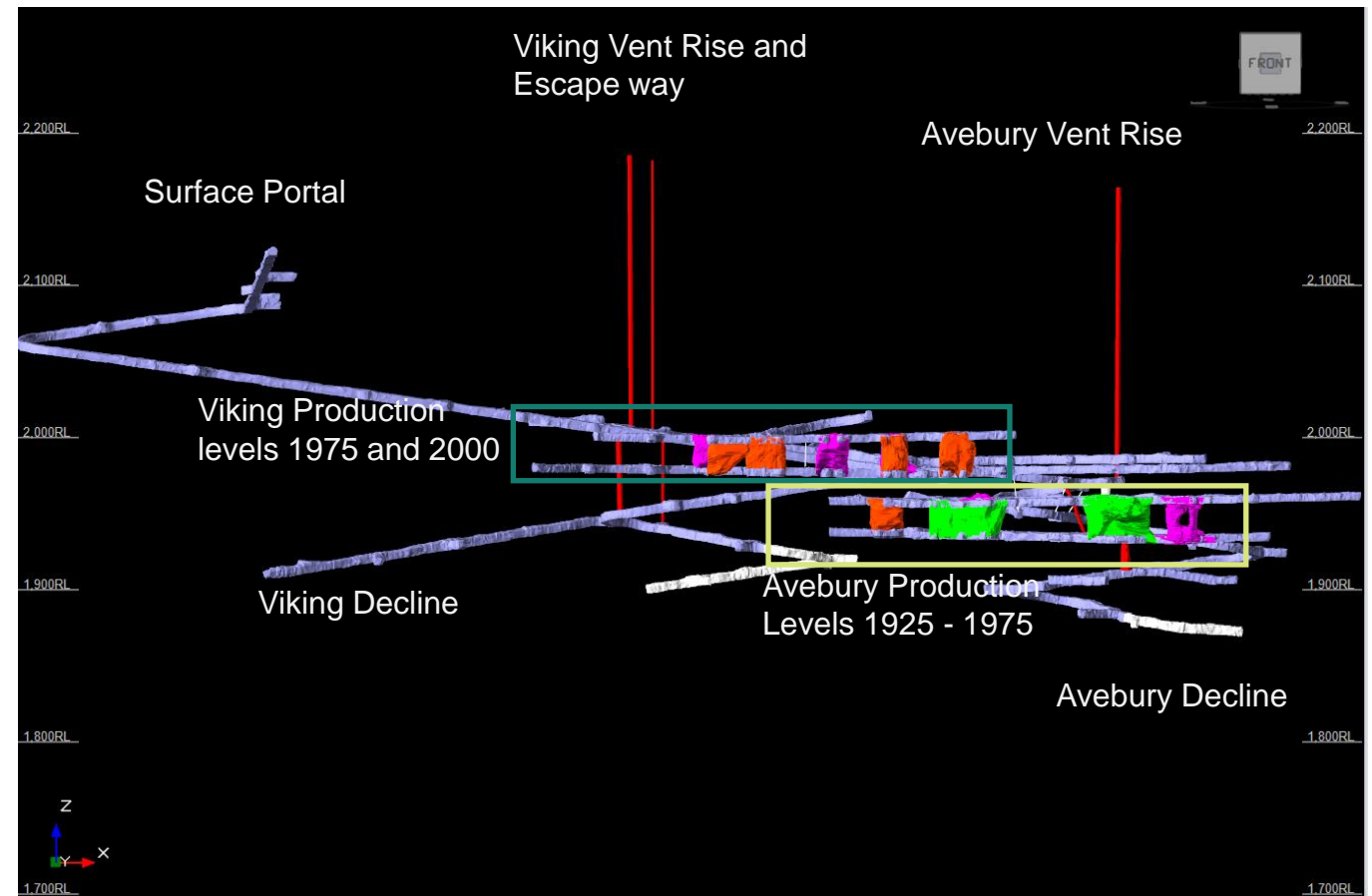


# Advanced underground mine

## Advantage : Avebury

- The ore body is close to surface
- Simple longitudinal and transverse stoping
- High tonnes per vertical metre
- Large stopes
- Backfill with waste rock and paste fill made from mill tailings
- Development completed well in advance of that needed for mine production (future production flexibility for blending)
- First three Avebury lodes are accessible from the existing decline: excellent scheduling flexibility
- Stable ground conditions
- Cool and relatively dry mine, with slightly alkaline groundwater

Avebury Underground Mine



# Modern processing infrastructure

## Advantage: Avebury

- High-quality European processing plant that has been protected from the weather and well-maintained
- Nameplate processing capacity of 900,000 tonnes of ore per annum, with potential for greater throughput identified<sup>1</sup>
- Designed to recover 79% of the nickel in ore to a nickel concentrate, with a nickel grade around 20%. Potential for enhanced metallurgical recovery identified<sup>1</sup>
- Site also includes stores, workshops, an administration building, land holdings and accommodation facilities
- Tailings storage facility is fully permitted and retains storage capacity

*Grinding and Flotation Circuits*



*Crusher House and Fine Ore Bin*



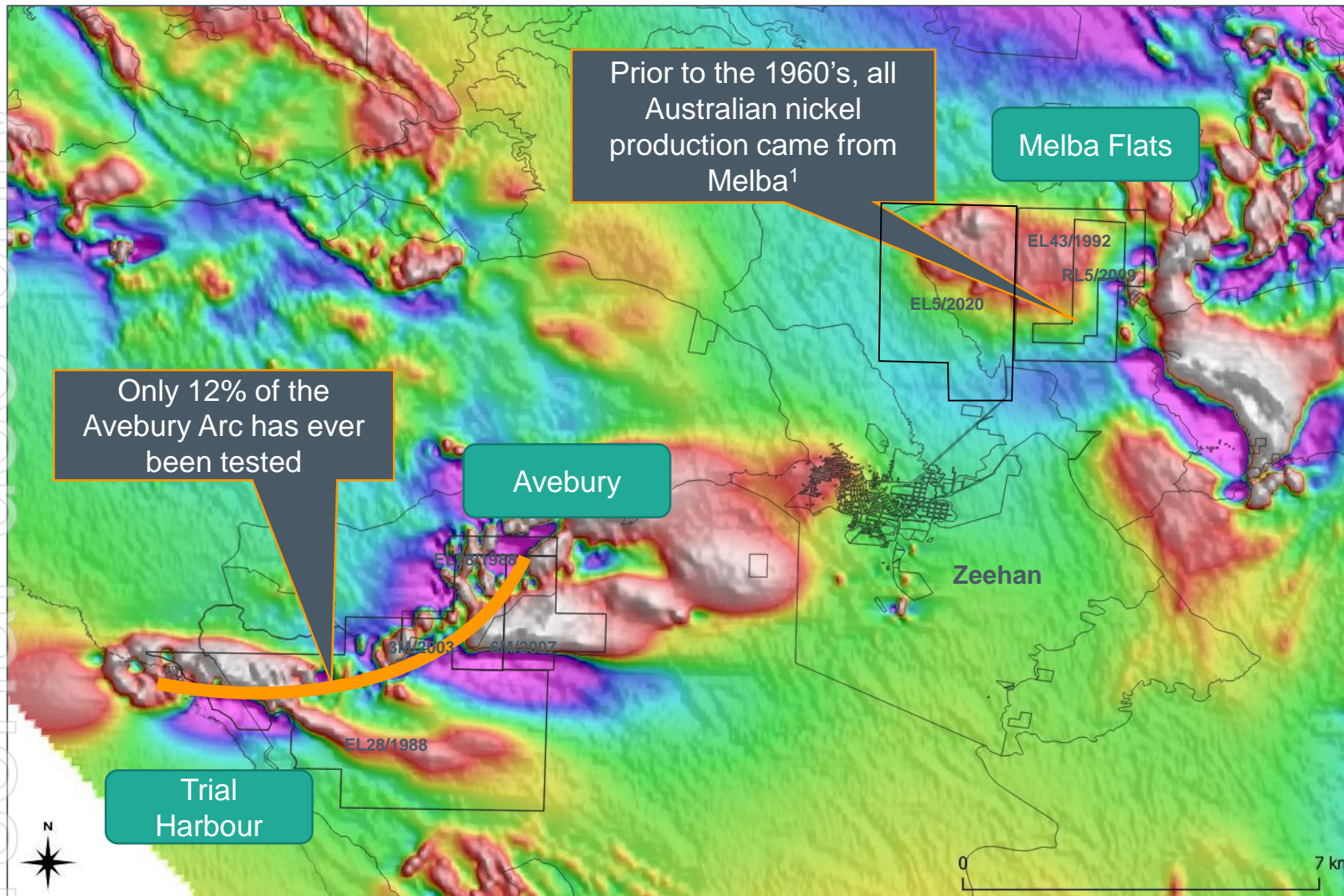
Notes:

1. Capacity enhancement and improved metallurgical recoveries are subject to further technical studies





# Outstanding nickel exploration potential



## Trial Harbour:

- Targeting more Aveburies along the ultramafic rocks of the Avebury Arc

## Melba:

- Targeting high-grade nickel and copper with gold and PGE's as mined in the numerous historical shafts on our tenements

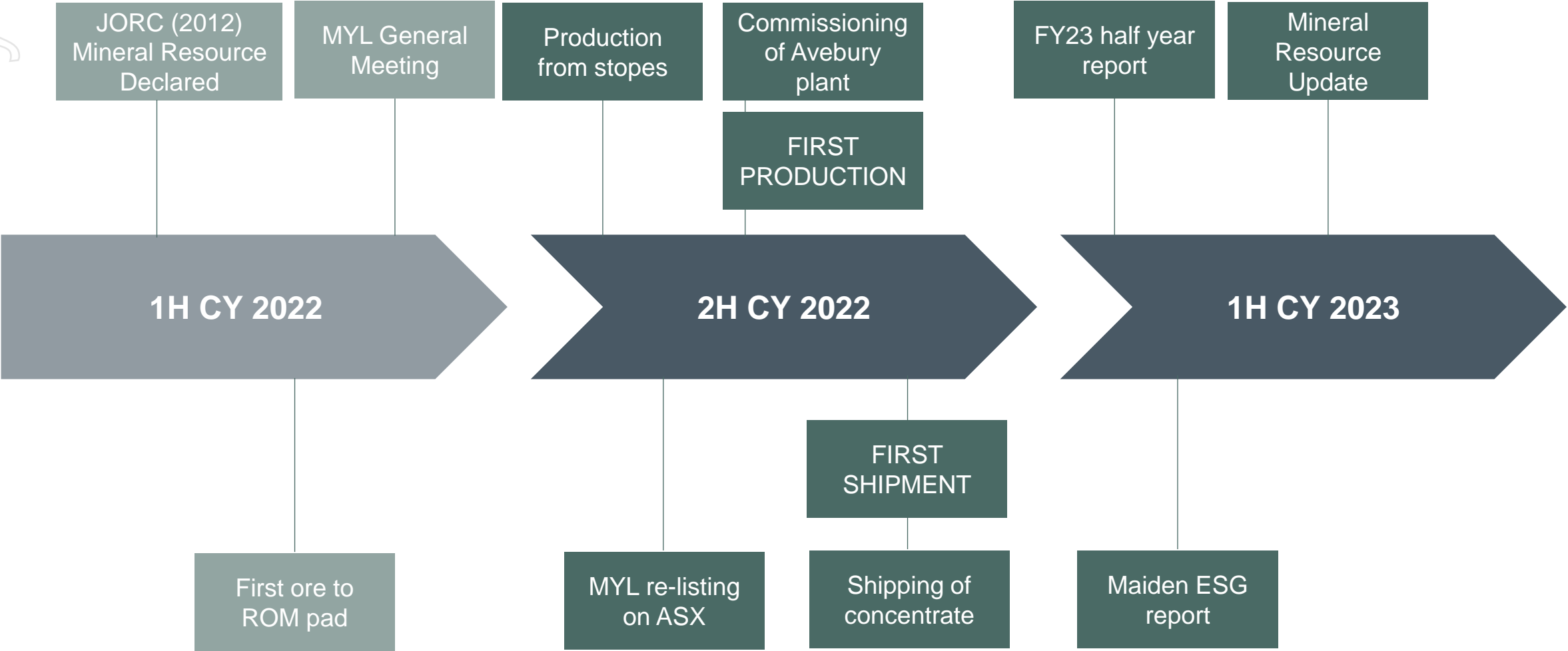
Notes:

1. M. McKeown (2004). Melba Flats Nickel Project





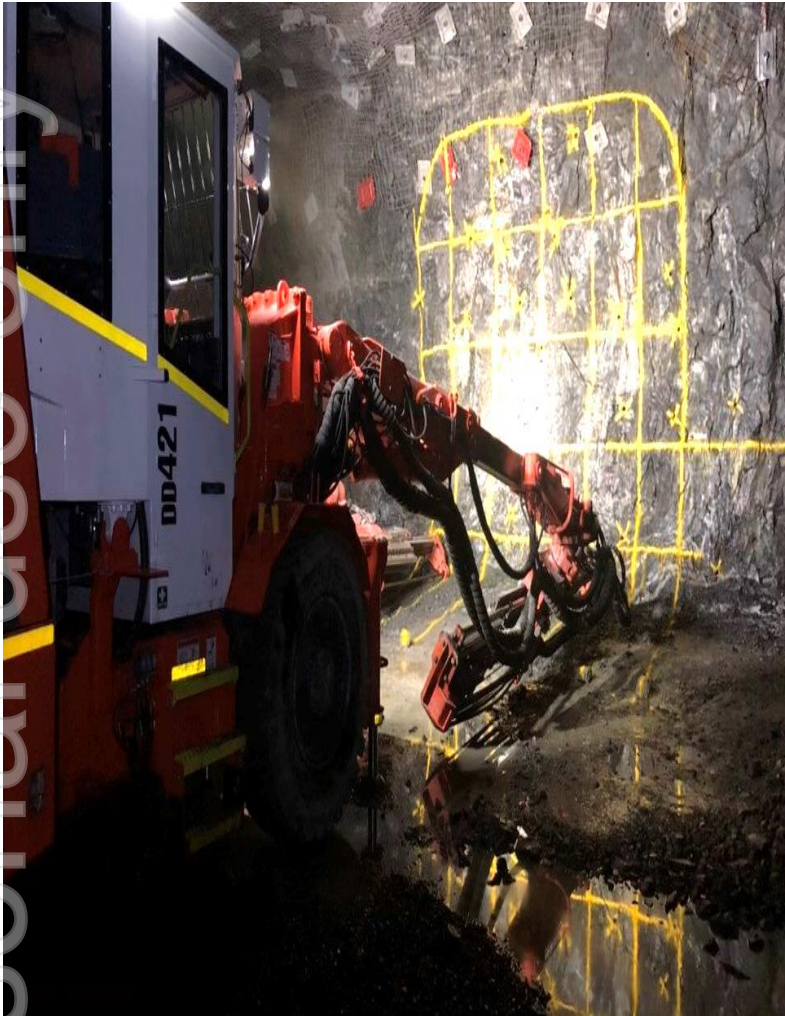
# Milestones 2022-23



Notes:  
1. Times are indicative only and are subject to change. A re-listing of MYL on the ASX is at the ASX's sole discretion. Accordingly, there is no certainty that MYL will successfully re-list. There can be no guarantee that commissioning of the Avebury plant will be successful and that first concentrate will be produced in accordance with the indicative timeline.



# Snapshots from site



Jumbo drilling



Underground drone survey



Heli-supported geophysics survey



Loader #1 arriving



Mine Rescue training



# Snapshots from site



Underground Bagger



Production Drill Rig



First Ore Truck in 13 Years



ersonal use only



**MALLEE  
RESOURCES  
LIMITED**

ASX: MYL | [malleeresources.com.au](http://malleeresources.com.au)