



CHIMERIC THERAPEUTICS

CHIMERIC

PIONEERS IN CELL THERAPY

NWR 2026



ASX:
CHM





DISCLAIMER

Certain statements contained in this presentation, including, without limitation, statements containing the words “believes,” “plans,” “expects,” “anticipates,” and words of similar import, constitute “forward-looking statements.” Such forward-looking statements involve known and unknown risks, uncertainties and other factors that may cause the actual results, performance or achievements of Chimeric (collectively, “Chimeric” or the “Company”) to be materially different from any future results, performance or achievements expressed or implied by such forward-looking statements. Such factors include, among others, the following: the risk that our clinical trials will be delayed and not completed on a timely basis; the risk that the results from the clinical trials are not as favourable as we anticipate; the risk that our clinical trials will be more costly than anticipated; and the risk that applicable regulatory authorities may ask for additional data, information or studies to be completed or provided

prior to their approval of our products.

Given these uncertainties, undue reliance should not be placed on such forward-looking statements. The Company disclaims any obligation to update any such factors or to publicly announce the results of any revisions to any of the forward-looking statements contained herein to reflect future events or developments except as required by law.

This presentation may not contain all the details and information necessary for you to make a decision or evaluation. Neither this presentation nor any of its contents may be used for any other purpose without the prior written consent of the Company.



INVESTMENT OVERVIEW

3

3 Phase 1 clinical trials
under 3 FDA INDs at 6 leading US centres



Multiple clinical updates
in the next 6mths



Experienced leadership team
in cell therapy clinical development



CHM-CDH17
the FIRST CDH17 CAR-T in clinical trials



Robust and long life
patent portfolio

CORPORATE PROFILE

Exchange	ASX: CHM
Share Price	\$0.002
52 Week Range	\$0.001 - 0.009
Market Cap	~ 8.8m
Shares on issue	~3.6B
IPO 2021	



CHM: FOCUSED PORTFOLIO


2 Novel cell therapies; 3 Clinical Trials

● ●

CHM CDH17

CAR-T

Technology from:



PHASE 1/2 TRIAL OPEN
4 sites active

● ●

CHM CORE-NK

'OFF THE SHELF' NK

Technology from:



PHASE 1B TRIAL OPEN MD Anderson	PHASE 1B TRIAL SUSPENDED Case Western
---------------------------------------	---



CHIMERIC THERAPEUTICS

CHM CDH17

Clinical Trial Update



ASX:
CHM

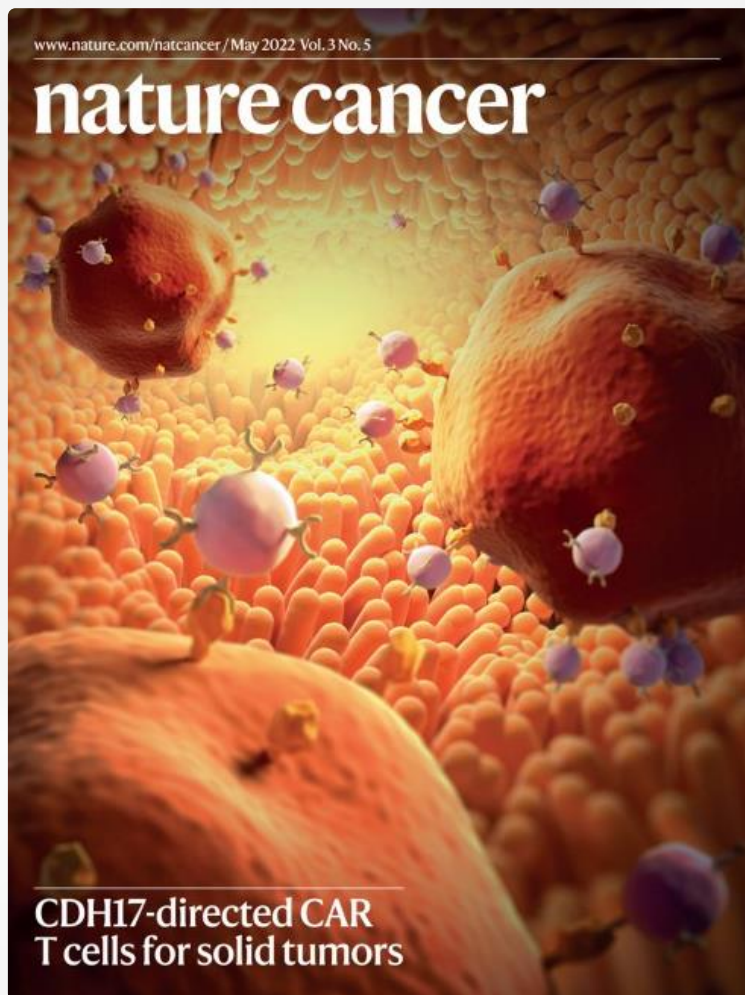
20
26



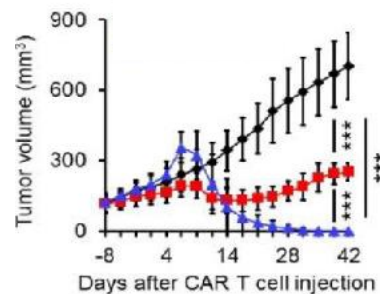


ENCOURAGING PRE-CLINICAL RESULTS

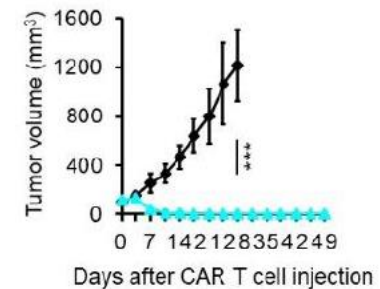
CDH17 CAR T induced complete eradication of tumours with no relapse in seven mouse models



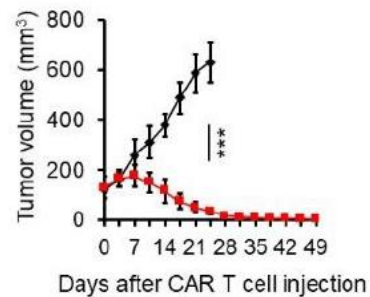
NEUROENDOCRINE TUMOURS



GASTRIC CANCER



PANCREATIC CANCER



CHM CDH17
CAR-T



Source: Feng et al., Nature Cancer, 2022





CHM CDH17 CAR-T PHASE 1 RECRUITING

The first CDH17 CAR T cell therapy in clinical trials globally

CHM CDH17
CAR-T

Technology from:



PHASE 1/2 TRIAL OPEN

4 sites actively recruiting

PERSONALISED CAR-T: AUTOLOGOUS

4 sites actively recruiting: Sarah Cannon, UPenn, UChicago, Emory

FDA IND November 2023

First Patient Dosed August 2024

FASTRACK Designation April 2025: Neuroendocrine Tumours

ORPHAN Designation December 2025: Gastric Cancer

Manufacturing: 12/12 successful runs; GMP Compliant

12 Patients enrolled:

11 Patients treated, 1 awaiting dosing

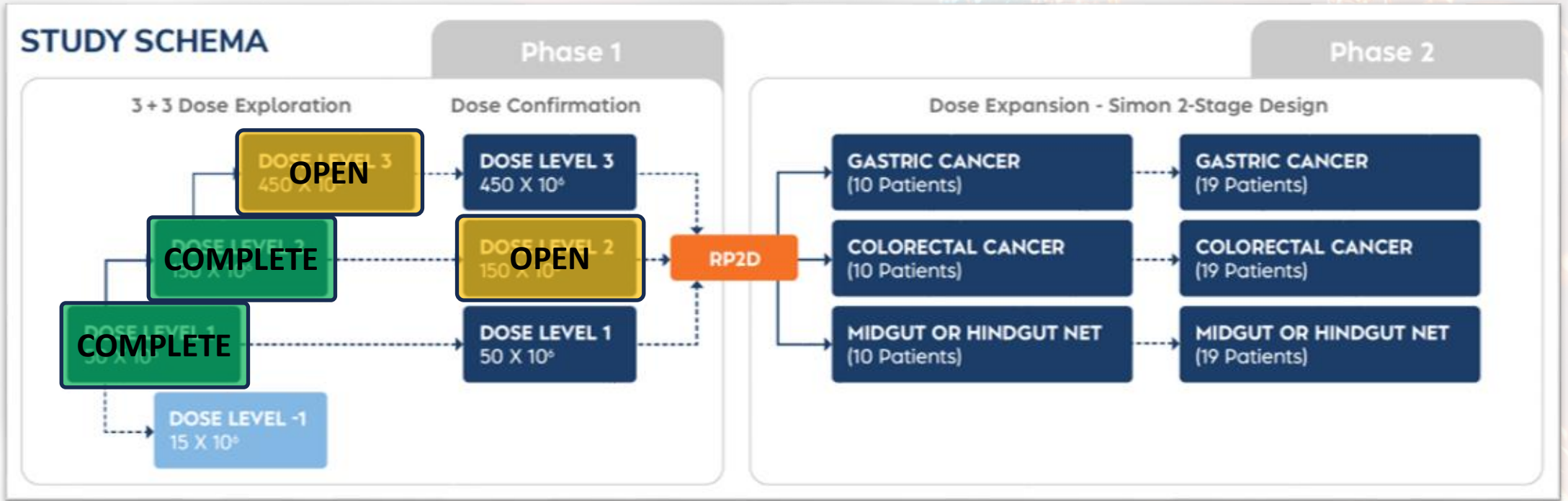
N= up to 15 patients



ersonal use only
CHIMERIC THERAPEUTICS



Phase 1/2 Clinical Trial of CHM CDH17



NCT06055439



ersonal use only
CHIMERIC THERAPEUTICS



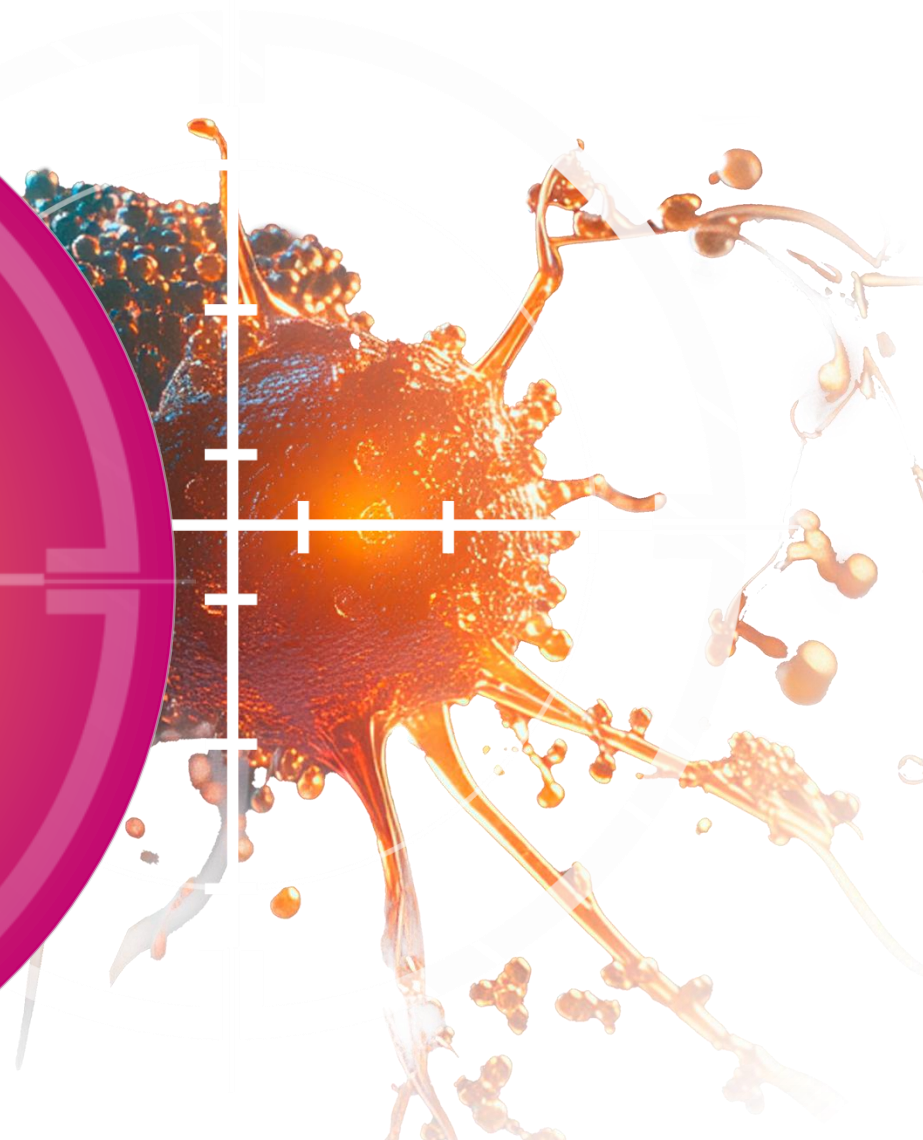
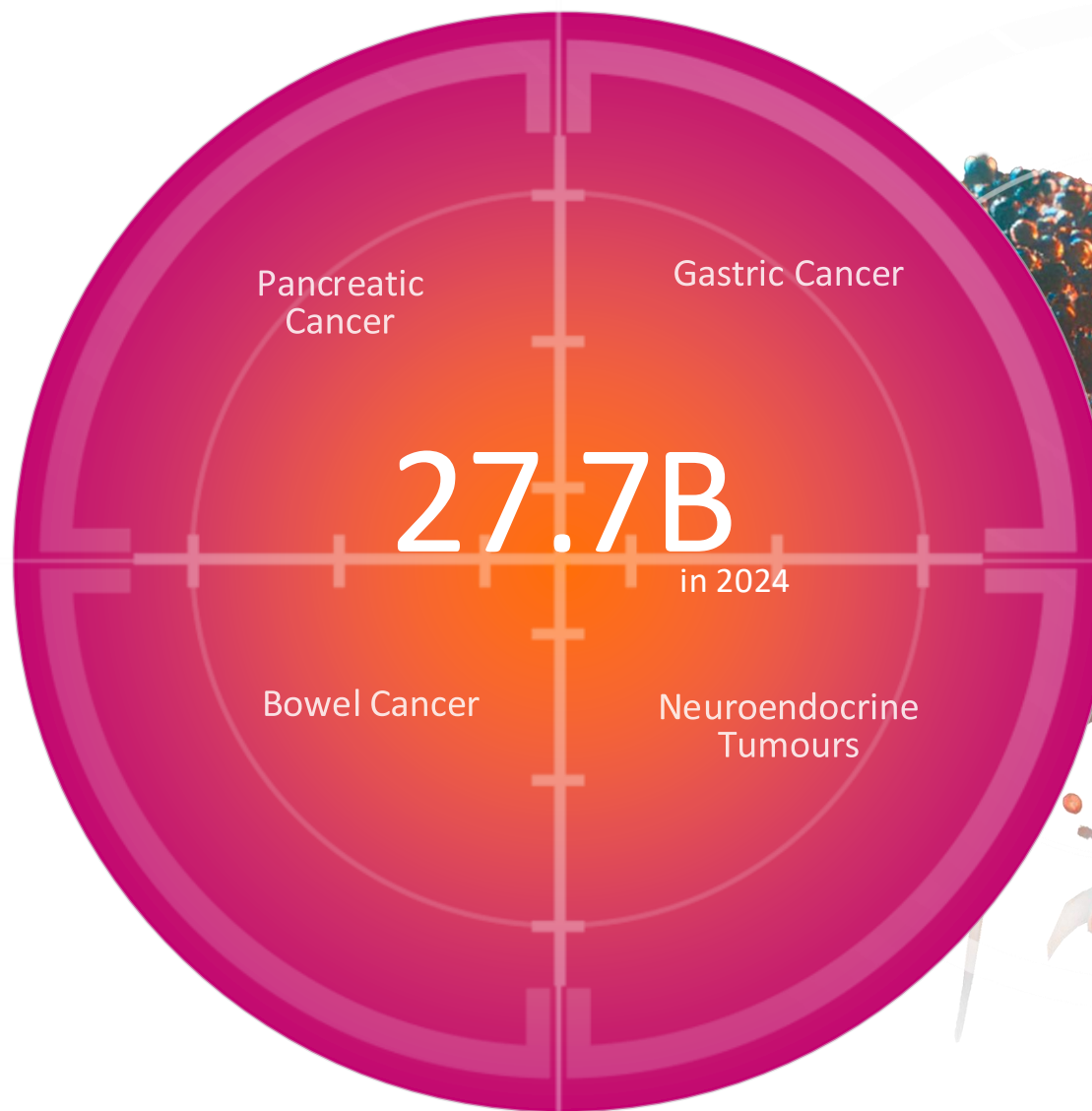
CHM CDH17 PROGRESS AS AT MARCH 23, 2026

Dose Level	Status	Notes
1 50m	Completed	4 patients treated 1 patient remains on study
2 150m	Recruitment completed	5 patients treated – all achieved SD at Day 28 1 awaiting treatment
3 450m	Recruitment underway	1 patient treated 1 patient awaiting treatment 4 patients waitlisted
Manufacturing	GMP compliant	12 out of 12 successful runs

ersonal use only
CHIMERIC THERAPEUTICS



TOTAL GLOBAL MARKET SIZE



Personal Use Only
CHIMERIC THERAPEUTICS



SUMMARY

● ●
CHM CDH17
CHM 2101

11 patients treated, 1 awaiting treatment

12/12 manufacturing runs

Anti-tumour activity observed

No safety issues to date

No off-target effects

FY26 Deliverables

Complete Dose level 2

Commence Dose level 3

Conclude Phase 1

Phase 2 readiness





CHIMERIC THERAPEUTICS

CHM CORE NK

Clinical Trial Update



ASX:
CHM

20
26



CHM CORE-NK 2 PHASE 1B TRIALS OPEN

Phase 1b clinical trials OPEN

CHM CORE-NK
'OFF THE SHELF' NK

Technology from:

 **CASE WESTERN RESERVE UNIVERSITY**

PHASE 1B TRIAL OPEN PHASE 1B TRIAL SUSPENDED

OFF THE SHELF: ALLOGENEIC

NK cell expansion platform: **Universal Donor**

Positive Phase 1A Clinical Trial in AML

Two ongoing Phase 1B Clinical Trials in AML

MDACC AML: Cohort 1 cleared, moved to dose expansion for Cohort 2
FRONTLINE - A FIRST IN CELL THERAPY
Multiple Patient dosed; rapidly recruiting

Case Western AML: Trial suspended due to IL-2 Shortage

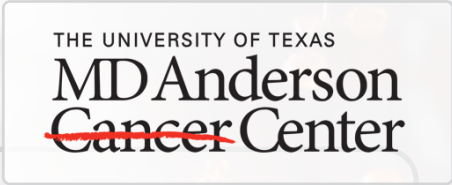
ersonal use only
CHIMERIC THERAPEUTICS



AML PHASE 1B CLINICAL TRIAL OPEN

CHM CORE-NK + AZA + VEN in FRONTLINE AML

Clinical Trials.gov Identifier: NCT05834244



The diagram illustrates the combination of three components for AML treatment:

- CORE NK CELLS:** Represented by a large grey cell with an orange nucleus and various receptors on its surface.
- FDA REGISTERED CHEMOTHERAPY:** Represented by a vial of **Azacitidine for Injection** (100 mg/vial).
- FDA REGISTERED BLOOD CANCER DRUG:** Represented by a vial and box of **VENETOCLAX** (100 MG Tablets).

 The components are connected by plus signs, indicating their combination in the treatment regimen.

CHM CORE NK
'OFF THE SHELF' NK

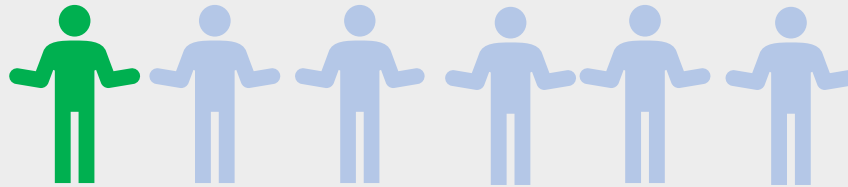
ersonal use only
CHIMERIC THERAPEUTICS



CHM CORE-NK FRONTLINE PHASE 1 STUDY RESULTS

Four Completes Responses, 1 Partial Response

Dose escalation
completed



Relapse Refractory Patients
1 Complete Response

First line
Dosing
Underway



FrontLine Patients with no prior treatment
3 Complete Responses
1 Partial Response

Complete Response means that all visible or measurable signs of cancer have disappeared after treatment

Partial Response means the cancer has reduced by at least 50% but not entirely disappeared in response to treatment



SUMMARY CHM CORE-NK

CHM CORE-NK

'OFF THE SHELF' NK

Investigator Sponsored Trial – MD ANDERSON

Dose Escalation completed

First Line Dosing Underway – up to 20 patients

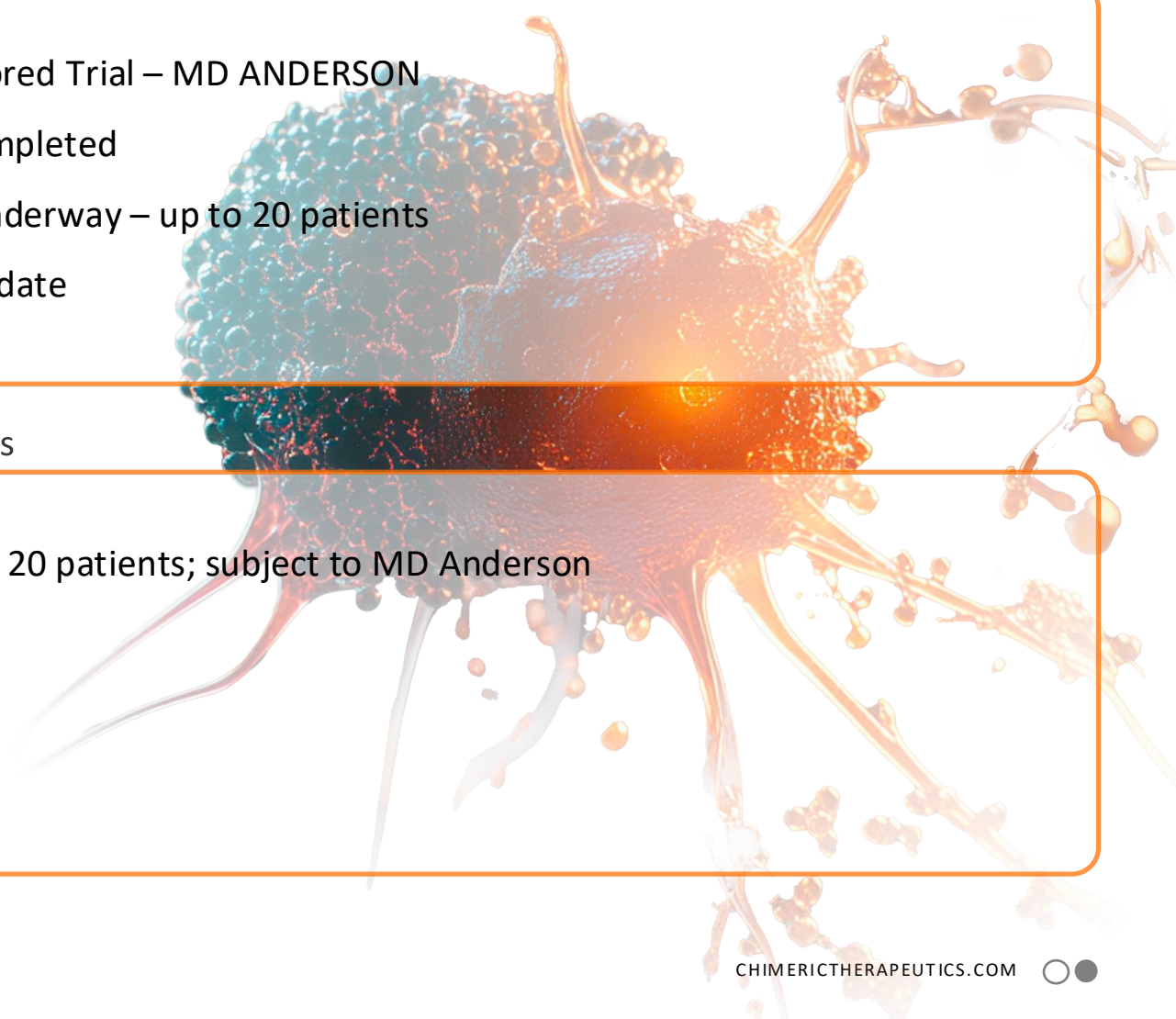
No safety issues to date

FY26 Deliverables

Complete dosing of 20 patients; subject to MD Anderson



ersonal use only
CHIMERIC THERAPEUTICS





SUMMARY

CHM CDH17

CHM 2101

11 patients treated
12/12 manufacturing runs
Tumour shrinkage observed 10
No unexpected safety issues to date
No off-target effects

CHM CORE-NK

'OFF THE SHELF' NK

Investigator Sponsored Trial – MD ANDERSON
Dose Escalation completed
First Line Dosing Underway – 7 dosed up to 20 patients
No safety issues to date



CHIMERIC THERAPEUTICS

CHIMERIC

PIONEERS IN CELL THERAPY

investors@chimerictherapeutics.com



ASX:
CHM

