

Notice Under Section 708A(5)(e)(i) of the Corporations Act 2001 (Cth)

Heavy Minerals Limited (ASX: HVY) (**Heavy Minerals, HVY** or the **Company**) advises that it issued 125,000 fully paid ordinary shares on 17 April 2026.

The Company gives this notice under section 708A(5)(e) of the *Corporations Act 2001* (Cth) ('Corporations Act'). The Company issued the fully paid ordinary shares without disclosure to investors under Part 6D.2 of the Corporations Act. The Company, as at the date of this notice, has complied with:

- ✕ the provisions of Chapter 2M of the Corporations Act as they apply to the Company; and
- ✕ section 674 and 674A of the Corporations Act.

There is no excluded information as at the date of this notice, for the purposes of sections 708A(7) and 708A(8) of the Corporations Act.

This announcement has been authorised by the Board of Directors of the Company.

Ends

For further information, please contact:

Heavy Minerals Limited

Adam Schofield
Non-Executive Chairman
Ph: +61 (08) 9481 0389
E: info@heavyminerals.com

About Heavy Minerals Limited

Heavy Minerals Limited (ASX: HVY) is an Australian listed industrial mineral exploration company.

The Company's projects are prospective for industrial minerals including but not limited to Garnet, Zircon, Rutile and Ilmenite. The Company's initial focus is the Port Gregory and Red Hill Garnet Projects in Western Australia with the Port Gregory project having a JORC (2012) Measured, Indicated and Inferred Mineral Resource of 166 million tonnes @ 4.0% Total Heavy Minerals. This comprises a Measured Mineral Resource of 126 Mt @ 3.8% THM; an Indicated Mineral Resource of 20 Mt @ 6.5% THM; and an Inferred Mineral Resource of 20 Mt @ 2.9% THM. This includes 5.9 million tonnes of contained Garnet and 260 thousand tonnes of ilmenite⁵.



An Exploration Target has been defined for Red Hill using cut-off grades for reporting of 3% THM and 1% THM and ranging from 90 to 150 Mt of material @ 5.4% to 4.1% THM. The Exploration Target also contains between 5 and 6 Mt of THM and 3.8 and 4.5 Mt of garnet⁶. The potential quality and grade of the Exploration Target is conceptual in nature and there has been insufficient exploration activity to determine a Mineral Resource estimate and it is uncertain if further exploration will result in the estimation of a Mineral Resource.

The Company's other project is the Inhambane Heavy Mineral Project in Mozambique which contains an ilmenite dominated JORC (2012) Inferred Mineral Resource of 90 million tonnes @ 3.0% Total Heavy Mineral⁷.

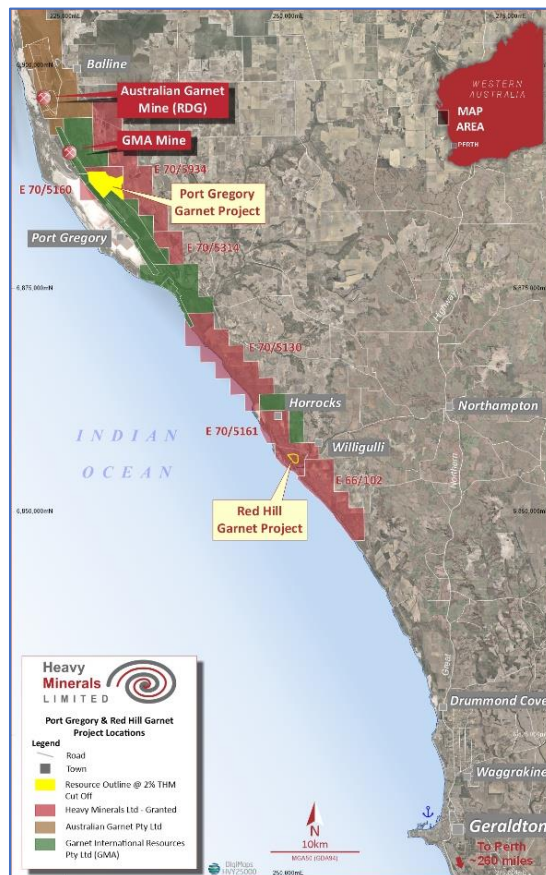
The Company confirms that it is not aware of any new information or data that materially affects the information included in this announcement and that all material assumptions and technical parameters underpinning the JORC estimates continue to apply and have not materially changed.

To learn more please visit: www.heavyminerals.com

⁵ https://cdn-api.markitdigital.com/apiman-gateway/ASX/asx-research/1.0/file/2924-02685080-6A1157738?access_token=83ff96335c2d45a094df02a206a39ff4

⁶ https://cdn-api.markitdigital.com/apiman-gateway/ASX/asx-research/1.0/file/2924-02661758-6A1148442?access_token=83ff96335c2d45a094df02a206a39ff4

⁷ https://cdn-api.markitdigital.com/apiman-gateway/ASX/asx-research/1.0/file/2924-02462745-6A1067130?access_token=83ff96335c2d45a094df02a206a39ff4



Western Australian Project Locations - Port Gregory and Red Hill

For personal use only