



ClearVue^{PV}

ASX Announcement – 29 October 2018

ASX Release | ClearVue Technologies Limited (ASX: CPV)

ClearVue signs MOU with IoTStream

Highlights

- ClearVue signs MOU to partner with internet-of-things (IoT) platform provider IoTStream Pty Ltd
- ClearVue and IoTStream have agreed to collaborate exclusively on integration of IoTStream's StreamVue IoT portal application with ClearVue's power generating solar PV windows and IGUs
- ClearVue will become the exclusive reseller of the StreamVue application (to be white labelled for ClearVue) for the Building Integrated Photovoltaics/Window Integrated Photovoltaics sector
- The IoTStream StreamVue application will provide significant added value to any investment into an installation of ClearVue's advanced solar PV glazing
- The application informs building owners and users of power generation, energy savings, carbon offset, environmental information among other things all from an easy to read and understand dashboard

29 October 2018: Smart building materials company ClearVue Technologies Limited (ASX:CPV) ("**ClearVue**" or "**the Company**") is pleased to announce that it has signed an MOU with IoTStream Pty Ltd (trading as IoTStream - ABN 58 614 291 066).

Under the MOU, the parties will work together to integrate ClearVue's BIPV advanced glazing IGUs and windows with IoTStream's cloud-based StreamVue software application.

The StreamVue application will provide data - including window/IGU power performance information, energy consumption data, energy savings, carbon offset, and environmental data amongst other data streams - to the user via a single and easy to understand information portal.

This application presents significant added value for ClearVue or its licensees and their collective customers making an investment into an installation of ClearVue's advanced solar PV glazing.

An early version of a ClearVue customised edition of the StreamVue portal application has been demonstrated at the Glasstec trade show in Dusseldorf during this week to assess market reaction, which has been very positive.

IoTStream has developed a software-as-a-service platform that enables businesses to see, measure and monitor anything at any time, reducing costs and maximising productivity. The IoTStream solutions leverage new technology and communication networks to simplify connectivity of IoT sensors/devices and provide a secure and actionable overview of internet-of-things applications in an easy to understand dashboard format.

ClearVue Technologies Limited

PO Box 902
West Perth WA 6872

Contact

P +61 8 9482 0500
info@clearvuepv.com
www.clearvuepv.com

IoTStream's StreamVue platform provides scalable benefits including faster time to market for resellers and end-users, is fully hosted and supported, with flexible configuration and integration of sensors, making it simple for ClearVue, its licensees and their end-customers to integrate their window and building facades reducing costs and increasing operational efficiency and ease of use.

The platform provides an out-of-the-box IoT solution for ClearVue, its licensees and customers to integrate sensors and data streams of their choosing at a reasonable price that maximises ROI without requiring significant investment in internal IT support.

Under the terms of the MoU, ClearVue will become the exclusive global reseller of the IoTStream cloud-based application for the BIPV/window integrated photovoltaics sector. The software will be customised by IoTStream, white labelled and marketed under a new name specific to ClearVue; the terms of the MoU to be captured in a formal exclusive Reseller Agreement.

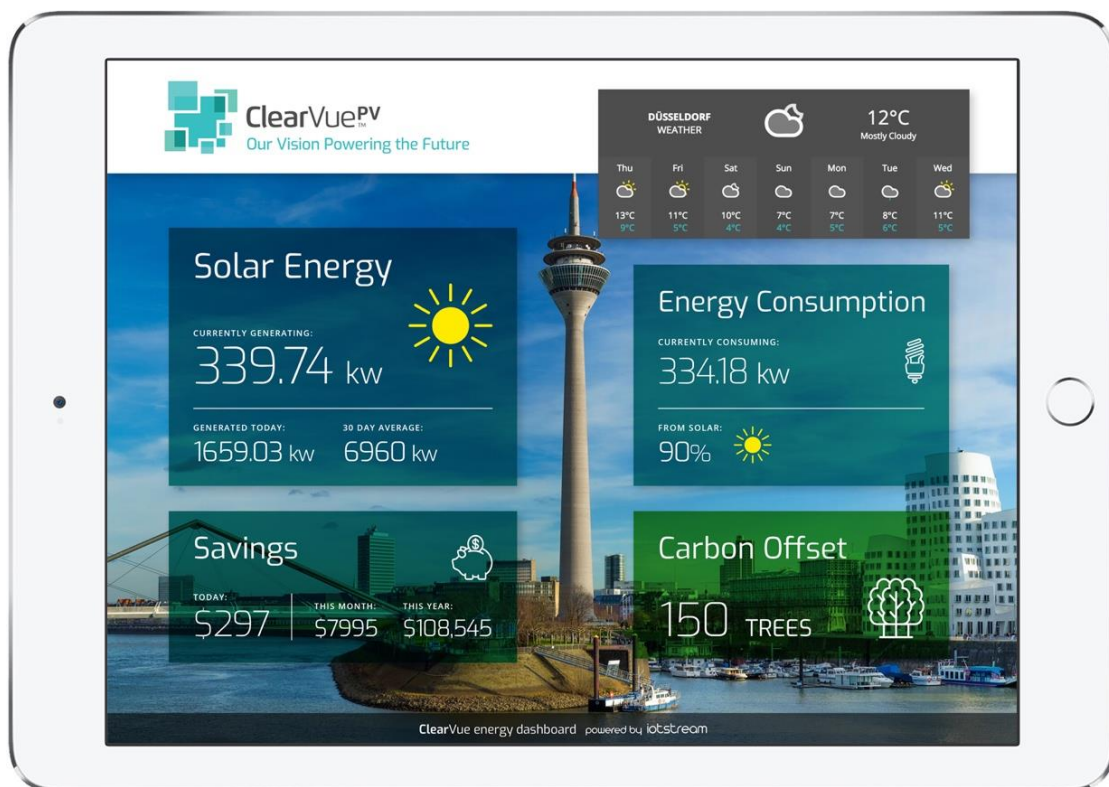


Image – iPad demonstrating IoTStream's StreamVue application as customised for ClearVue - display showing indicative power performance and energy savings (note: displayed numbers for illustration purposes only and may differ in actual use situations)

Commenting on the MOU, Executive Chairman Victor Rosenberg said:

"ClearVue's collaboration with IoTStream will have significant benefits to ClearVue, its licenses and customers. The IoTStream solution will allow data on power being generated from ClearVue glass, energy savings being made, carbon offsets generated and related environmental information to be collected from the glass (or inverters connected to the glass) and provided back in a neatly packaged and easily digestible format. This is fantastic for building owners and developers to have a complete view into the performance of their buildings, building façades and windows. The decision to work with IoTStream on this collaboration has been a very easy one for us – the team from IoTStream have gone out of their way from day one to work with us in a fully collaborative way to try and understand our needs, those of our licensees and our end customers. The partnership is also an important step in increasing the scalability of ClearVue's technology. We know that customers, no matter how big or small are interested in viewing the effectiveness of our solar glass and we are now able to offer this. We look forward to a very long and mutually beneficial relationship."

For further information, please contact:

ClearVue Technologies Limited

Victor Rosenberg

Executive Chairman

ClearVue Technologies Limited

victor@clearvuepv.com

P: +61 8 9482 0500

Media Enquiries

David Tasker

Director

Chapter One Advisors

dtasker@chapteroneadvisors.com.au

M: +61 433 112 936

About ClearVue Technologies Limited

ClearVue Technologies Limited (ASX: CPV) is an Australian technology company that operates in the Building Integrated Photovoltaic (BPIV) sector which involves the integration of solar technology into building and agricultural industries, specifically glass and building surfaces, to provide renewable energy. ClearVue has developed advanced glass technology that aims to preserve glass transparency to maintain building aesthetics whilst generating electricity.

Solar PV cells are incorporated around the edges of an Insulated Glass Unit (IGU) used in windows and the lamination interlayer between the glass in the IGU incorporates ClearVue's patented proprietary nano and micro particles, as well as its spectral selective coating on the rear external surface of the IGU.

ClearVue's window technology has application for use in the building and construction and agricultural industries (amongst others).

ClearVue has worked closely with leading experts from the Electron Science Research Institute, Edith Cowan University (ECU) in Perth, Western Australia to develop the technology.

To learn more please visit: www.clearvuepv.com

About IoTStream Pty Ltd trading as IoTStream

IoTStream simplifies the 'internet of things' with products that provide a secure, comprehensive way to optimise connected devices and a holistic view that enables informed actions.

By productising the common elements across IoT solutions, IoTStream offers a platform that covers a wide variety of use cases and applications, alleviating the need for expensive bespoke development.

For further information, please contact:

Stephen Argyropoulos
CEO Australia
stephen@iotstream.io
+61 409 193 264
www.iotstream.io

Forward Looking Statements

Statements contained in this release, particularly those regarding possible or assumed future performance, revenue, costs, dividends, production levels or rates, prices or potential growth of ClearVue Technologies Limited, are, or may be, forward looking statements. Such statements relate to future events and expectations and, as such, involve known and unknown risks and uncertainties. Actual results and developments may differ materially from those expressed or implied by these forward-looking statements depending on a variety of factors.